

IH 794: IH 43 TO LINCOLN MEMORIAL DR (MILWAUKEE COUNTY) OFF-PEAK DAY 2 LANE CLOSURE NO DIVERSION ROUTE (MAX QUEUE METHOD)	AUGUST
	Analyzed for 2009 Construction Season

SUMMARY OF TRAFFIC MODEL OUTPUT

MON-THUR WESTBOUND DIRECTION

TIME OF DAY	FLOWS AND CAPACITY IN VEH/HR						AVERAGE SPEEDS IN MPH			
	MAIN ROUTE		SITE CAPA CITY	FLOW		AV.DEL PER VEH (MINS)	AVERAGE QUEUE (VEH)	MAIN ROUTE		SITE
	DEMAND FLOW	PCT HEAVY		MAIN ROUTE	'DIVER TED'			WITHOUT WORK ZONE	WITH WORK ZONE	
MID-1 AM	537	0.0	OFF	537	0	0.00	0	70.0	70.0	70.0
1-2 AM	399	0.0	OFF	399	0	0.00	0	70.2	70.2	70.2
2-3 AM	257	0.0	OFF	257	0	0.00	0	70.2	70.2	70.2
3-4 AM	260	0.0	OFF	260	0	0.00	0	70.2	70.2	70.2
4-5 AM	586	0.0	OFF	586	0	0.00	0	70.0	70.0	70.0
5-6 AM	1745	0.0	OFF	1745	0	0.00	0	68.6	68.6	68.6
6-7 AM	3730	0.0	OFF	3730	0	0.00	0	65.4	65.4	65.4
7-8 AM	4313	0.0	OFF	4313	0	0.00	0	61.4	61.4	61.4
8-9 AM	2959	0.0	OFF	2959	0	0.00	0	67.1	67.1	67.1
9-10 AM	2418	0.0	OFF	2418	0	0.00	0	67.8	67.8	67.8
10-11 AM	2592	0.0	1499	1985	607	13.23+	342	67.5	6.1	30.8
11AM-NOON	2983	0.0	1499	1461	1523	17.01+	431	67.0	5.3	30.8
NOON-1PM	2985	0.0	1499	1489	1495	17.01+	431	67.0	5.3	30.8
1-2 PM	3312	0.0	1499	1500	1812	17.13+	435	66.6	5.3	30.8
2-3 PM	4516	0.0	1500	1500	3016	16.98+	435	60.0	5.3	30.8
3-4 PM	5109	0.0	OFF	5109	0	1.12	106	56.0	27.4	27.4
4-5 PM	5126	0.0	OFF	5126	0	0.00	0	55.8	55.8	55.8
5-6 PM	4488	0.0	OFF	4488	0	0.00	0	60.2	60.2	60.2
6-7 PM	3107	0.0	OFF	3107	0	0.00	0	66.9	66.9	66.9
7-8 PM	2365	0.0	OFF	2365	0	0.00	0	67.8	67.8	67.8
8-9 PM	2196	0.0	OFF	2196	0	0.00	0	68.0	68.0	68.0
9-10 PM	1967	0.0	OFF	1967	0	0.00	0	68.3	68.3	68.3
10-11 PM	1455	0.0	OFF	1455	0	0.00	0	68.9	68.9	68.9
11PM-MID	913	0.0	OFF	913	0	0.00	0	69.6	69.6	69.6

"OFF" INDICATES NO ROAD WORK (ALL LANES OPEN TO TRAFFIC)

+ INDICATES QUEUEING EXCEEDS USER-SPECIFIED MAXIMUM LIMIT

----- SITE BREAKDOWN DELAYS -----	
BREAKDOWN DURATION (MINS)	0
RANGE OF QUEUE DELAY - MIN (VEH-H) MAX	0.0
AV BREAKDOWNS PER DAY	0.00
AV QUEUE DELAY/DAY (VEH-H)	0.0
AV TOTAL DELAY/DAY (VEH-H)	0.0

----- SITE ACCIDENT DELAYS -----	
BREAKDOWN DURATION (MINS)	0
RANGE OF QUEUE DELAY - MIN (VEH-H) MAX	0
AV BREAKDOWNS PER DAY	0
AV QUEUE DELAY/DAY (VEH-H)	0
AV TOTAL DELAY/DAY (VEH-H)	0

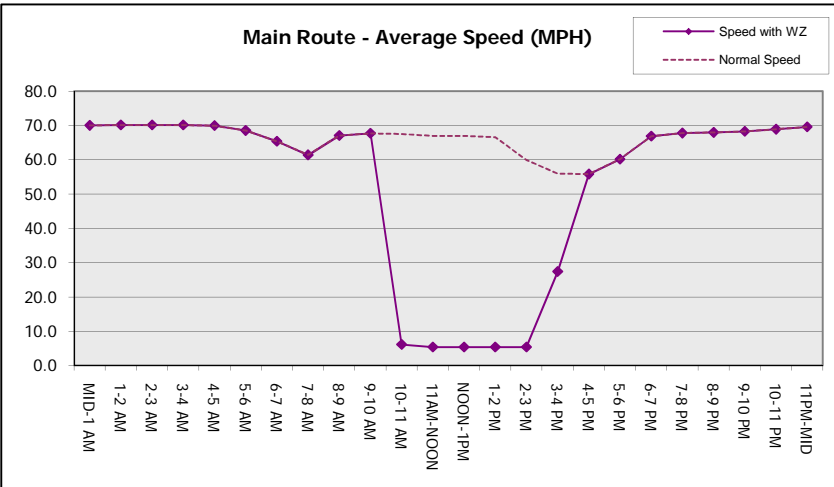
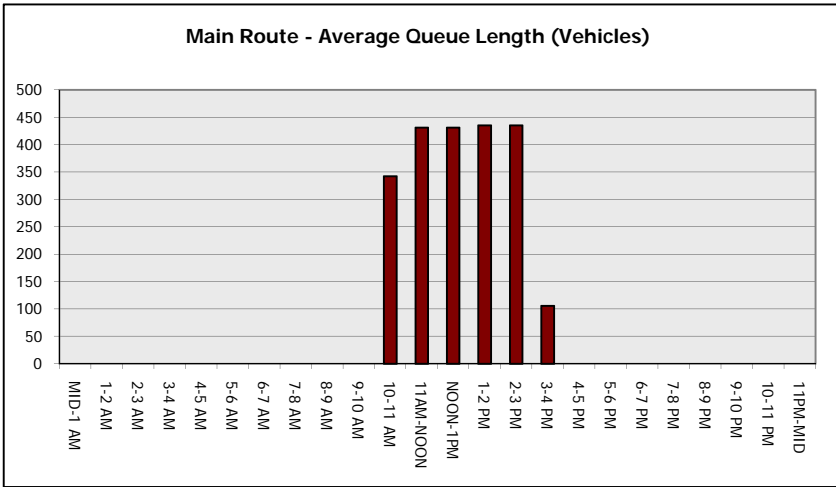
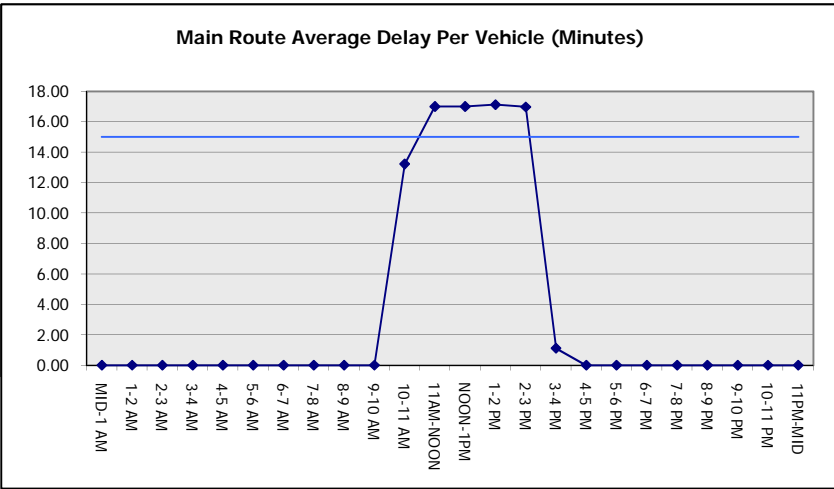
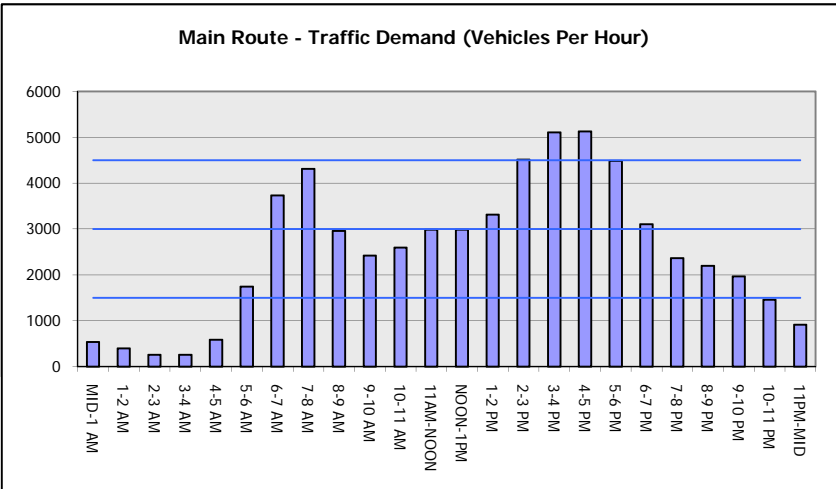
AVERAGE ACCIDENT NUMBERS (PIA/DAY)	
MAIN ROUTE WITHOUT WORKS	0.0096
MAIN ROUTE WITH WORKS	0.0074
'DIVERSION'	0.0031
PIA: Personal Injury Accidents	
IMPACTS ON ROAD USERS	
ROAD USER COSTS PER DAY	\$59,793
CONGESTED HOURS PER DAY*	5

*Delays Exceeding User-Specified Maximum

IH 794: IH 43 TO LINCOLN MEMORIAL DR (MILWAUKEE COUNTY)
OFF-PEAK DAY 2 LANE CLOSURE
NO DIVERSION ROUTE (MAX QUEUE METHOD)

AUGUST
 Analyzed for 2009
 Construction Season

GRAPHICAL REPRESENTATION OF TRAFFIC MODEL INPUT AND OUTPUT
MON-THUR WESTBOUND DIRECTION



IH 794: IH 43 TO LINCOLN MEMORIAL DR (MILWAUKEE COUNTY) OFF-PEAK DAY 2 LANE CLOSURE NO DIVERSION ROUTE (MAX QUEUE METHOD)	AUGUST
	Analyzed for 2009 Construction Season

SUMMARY OF TRAFFIC MODEL OUTPUT

MON-THUR EASTBOUND DIRECTION

TIME OF DAY	FLOWS AND CAPACITY IN VEH/HR						AVERAGE SPEEDS IN MPH			
	MAIN ROUTE		SITE CAPA CITY	FLOW		AV.DEL PER VEH (MINS)	AVERAGE QUEUE (VEH)	MAIN ROUTE		SITE
	DEMAND FLOW	PCT HEAVY		MAIN ROUTE	'DIVER TED'			WITHOUT WORK ZONE	WITH WORK ZONE	
MID-1 AM	367	0.0	OFF	367	0	0.00	0	70.2	70.2	70.2
1-2 AM	244	0.0	OFF	244	0	0.00	0	70.2	70.2	70.2
2-3 AM	205	0.0	OFF	205	0	0.00	0	70.2	70.2	70.2
3-4 AM	287	0.0	OFF	287	0	0.00	0	70.2	70.2	70.2
4-5 AM	823	0.0	OFF	823	0	0.00	0	69.7	69.7	69.7
5-6 AM	2999	0.0	OFF	2999	0	0.00	0	67.0	67.0	67.0
6-7 AM	5105	0.0	OFF	5105	0	0.00	0	56.0	56.0	56.0
7-8 AM	5464	0.0	OFF	5464	0	0.00	0	53.5	53.5	53.5
8-9 AM	4493	0.0	OFF	4493	0	0.00	0	60.2	60.2	60.2
9-10 AM	3195	0.0	OFF	3195	0	0.00	0	66.8	66.8	66.8
10-11 AM	2969	0.0	1499	1640	1329	15.63+	400	67.1	5.6	36.1
11AM-NOON	3097	0.0	1499	1879	1218	15.78+	407	66.9	5.6	31.6
NOON-1PM	3147	0.0	1499	1449	1698	16.99+	431	66.8	5.3	30.8
1-2 PM	3097	0.0	1499	1476	1621	17.06+	433	66.9	5.3	30.8
2-3 PM	3155	0.0	1499	1495	1660	17.13+	435	66.8	5.3	30.8
3-4 PM	3514	0.0	OFF	3514	0	0.42	38	66.4	45.2	45.2
4-5 PM	4089	0.0	OFF	4089	0	0.00	0	62.9	62.9	62.9
5-6 PM	4076	0.0	OFF	4076	0	0.00	0	63.0	63.0	63.0
6-7 PM	3299	0.0	OFF	3299	0	0.00	0	66.6	66.6	66.6
7-8 PM	2513	0.0	OFF	2513	0	0.00	0	67.6	67.6	67.6
8-9 PM	2263	0.0	OFF	2263	0	0.00	0	67.9	67.9	67.9
9-10 PM	1985	0.0	OFF	1985	0	0.00	0	68.2	68.2	68.2
10-11 PM	1445	0.0	OFF	1445	0	0.00	0	68.9	68.9	68.9
11PM-MID	819	0.0	OFF	819	0	0.00	0	69.7	69.7	69.7

"OFF" INDICATES NO ROAD WORK (ALL LANES OPEN TO TRAFFIC)

+ INDICATES QUEUEING EXCEEDS USER-SPECIFIED MAXIMUM LIMIT

----- SITE BREAKDOWN DELAYS -----	
BREAKDOWN DURATION (MINS)	0
RANGE OF QUEUE DELAY - MIN (VEH-H) MAX	0.0
AV BREAKDOWNS PER DAY	0.00
AV QUEUE DELAY/DAY (VEH-H)	0.0
AV TOTAL DELAY/DAY (VEH-H)	0.0

----- SITE ACCIDENT DELAYS -----	
BREAKDOWN DURATION (MINS)	0
RANGE OF QUEUE DELAY - MIN (VEH-H) MAX	0
AV BREAKDOWNS PER DAY	0
AV QUEUE DELAY/DAY (VEH-H)	0
AV TOTAL DELAY/DAY (VEH-H)	0

AVERAGE ACCIDENT NUMBERS (PIA/DAY)	
MAIN ROUTE WITHOUT WORKS	0.0100
MAIN ROUTE WITH WORKS	0.0079
'DIVERSION'	0.0028

PIA: Personal Injury Accidents

ECONOMIC IMPACT ON ROAD USERS	
ROAD USER COSTS PER DAY	\$55,912
CONGESTED HOURS PER DAY*	5

*Delays Exceeding User-Specified Maximum

IH 794: IH 43 TO LINCOLN MEMORIAL DR (MILWAUKEE COUNTY)
OFF-PEAK DAY 2 LANE CLOSURE
NO DIVERSION ROUTE (MAX QUEUE METHOD)

AUGUST

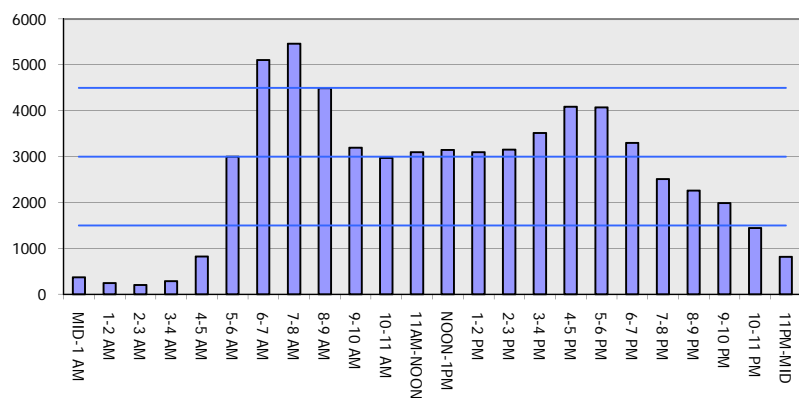
Analyzed for 2009
 Construction Season

GRAPHICAL REPRESENTATION OF TRAFFIC MODEL INPUT AND OUTPUT

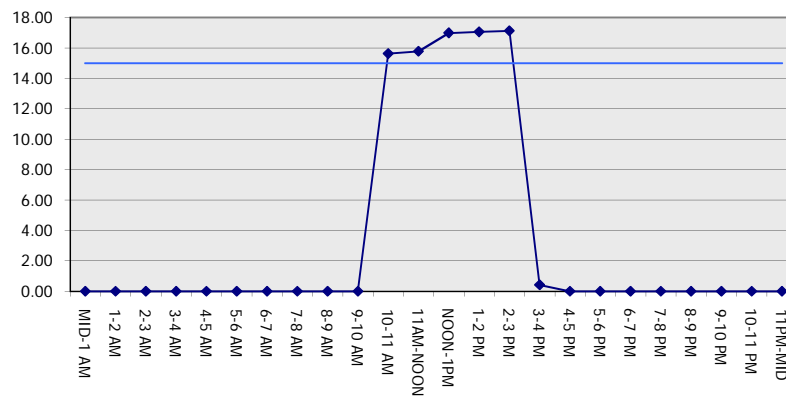
MON-THUR

EASTBOUND DIRECTION

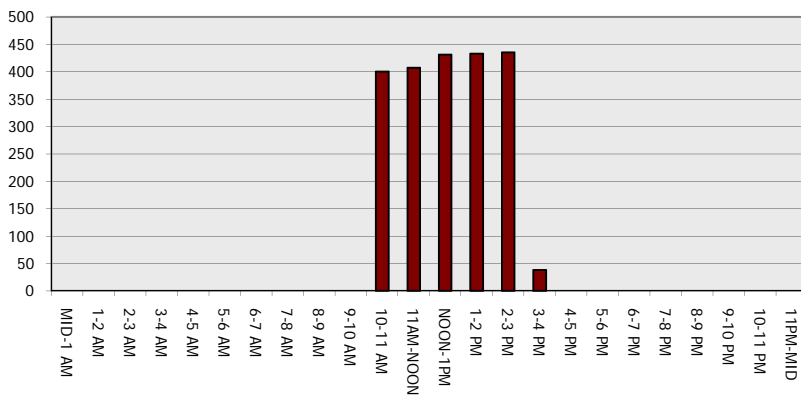
Main Route - Traffic Demand (Vehicles Per Hour)



Main Route Average Delay Per Vehicle (Minutes)



Main Route - Average Queue Length (Vehicles)



Main Route - Average Speed (MPH)

