

IH 794: IH 43 TO LINCOLN MEMORIAL DR (MILWAUKEE COUNTY) OFF-PEAK DAY CLOSURE NO DIVERSION ROUTE (MAX QUEUE METHOD)	AUGUST
	Analyzed for 2009 Construction Season

SUMMARY OF TRAFFIC MODEL OUTPUT

MON-THUR WESTBOUND DIRECTION

TIME OF DAY	FLOWS AND CAPACITY IN VEH/HR						AVERAGE SPEEDS IN MPH			
	MAIN ROUTE		SITE CAPA CITY	FLOW		AV.DEL PER VEH (MINS)	AVERAGE QUEUE (VEH)	MAIN ROUTE		SITE
	DEMAND FLOW	PCT HEAVY		MAIN ROUTE	'DIVER TED'			WITHOUT WORK ZONE	WITH WORK ZONE	
MID-1 AM	537	0.0	OFF	537	0	0.00	0	70.0	70.0	70.0
1-2 AM	399	0.0	OFF	399	0	0.00	0	70.2	70.2	70.2
2-3 AM	257	0.0	OFF	257	0	0.00	0	70.2	70.2	70.2
3-4 AM	260	0.0	OFF	260	0	0.00	0	70.2	70.2	70.2
4-5 AM	586	0.0	OFF	586	0	0.00	0	70.0	70.0	70.0
5-6 AM	1745	0.0	OFF	1745	0	0.00	0	68.6	68.6	68.6
6-7 AM	3730	0.0	OFF	3730	0	0.00	0	65.4	65.4	65.4
7-8 AM	4313	0.0	OFF	4313	0	0.00	0	61.4	61.4	61.4
8-9 AM	2959	0.0	OFF	2959	0	0.00	0	67.1	67.1	67.1
9-10 AM	2418	0.0	OFF	2418	0	0.00	0	67.8	67.8	67.8
10-11 AM	2592	0.0	2999	2592	0	0.23	0	67.5	53.5	44.8
11AM-NOON	2983	0.0	2999	2983	0	0.43	4	67.0	45.4	37.8
NOON-1PM	2985	0.0	3000	2985	0	0.46	5	67.0	44.3	37.6
1-2 PM	3312	0.0	3000	3312	0	2.01	120	66.6	21.8	37.3
2-3 PM	4516	0.0	3000	3652	864	14.67+	820	60.0	8.6	37.3
3-4 PM	5109	0.0	OFF	5109	0	5.45	531	56.0	9.2	9.2
4-5 PM	5126	0.0	OFF	5126	0	0.05	4	55.8	53.2	53.2
5-6 PM	4488	0.0	OFF	4488	0	0.00	0	60.2	60.2	60.2
6-7 PM	3107	0.0	OFF	3107	0	0.00	0	66.9	66.9	66.9
7-8 PM	2365	0.0	OFF	2365	0	0.00	0	67.8	67.8	67.8
8-9 PM	2196	0.0	OFF	2196	0	0.00	0	68.0	68.0	68.0
9-10 PM	1967	0.0	OFF	1967	0	0.00	0	68.3	68.3	68.3
10-11 PM	1455	0.0	OFF	1455	0	0.00	0	68.9	68.9	68.9
11PM-MID	913	0.0	OFF	913	0	0.00	0	69.6	69.6	69.6

"OFF" INDICATES NO ROAD WORK (ALL LANES OPEN TO TRAFFIC)

+ INDICATES QUEUEING EXCEEDS USER-SPECIFIED MAXIMUM LIMIT

----- SITE BREAKDOWN DELAYS -----	
BREAKDOWN DURATION (MINS)	0
RANGE OF QUEUE DELAY - MIN (VEH-H) MAX	0.0
AV BREAKDOWNS PER DAY	0.00
AV QUEUE DELAY/DAY (VEH-H)	0.0
AV TOTAL DELAY/DAY (VEH-H)	0.0

----- SITE ACCIDENT DELAYS -----	
BREAKDOWN DURATION (MINS)	0
RANGE OF QUEUE DELAY - MIN (VEH-H) MAX	0
AV BREAKDOWNS PER DAY	0
AV QUEUE DELAY/DAY (VEH-H)	0
AV TOTAL DELAY/DAY (VEH-H)	0

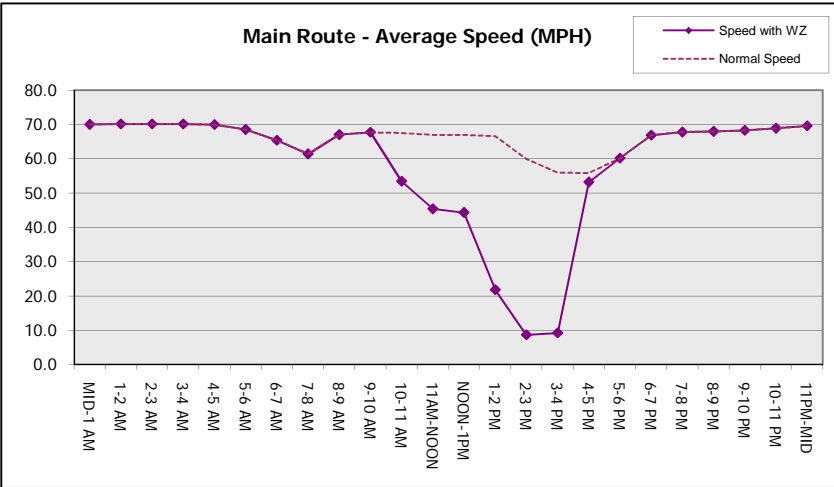
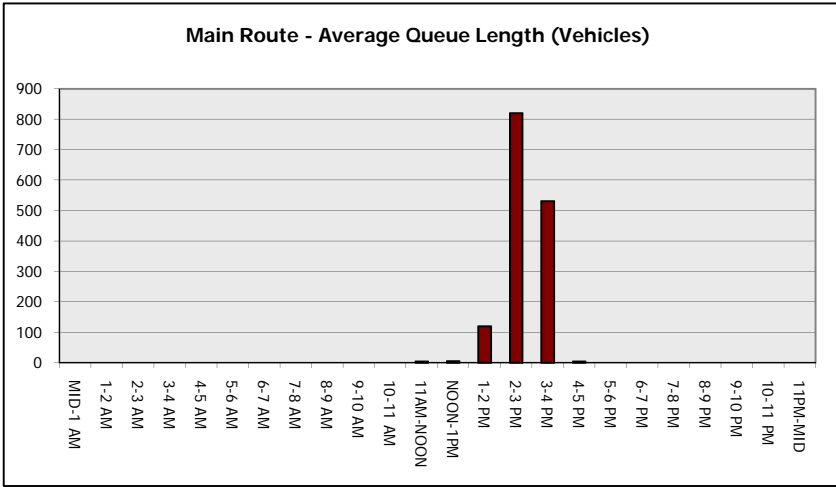
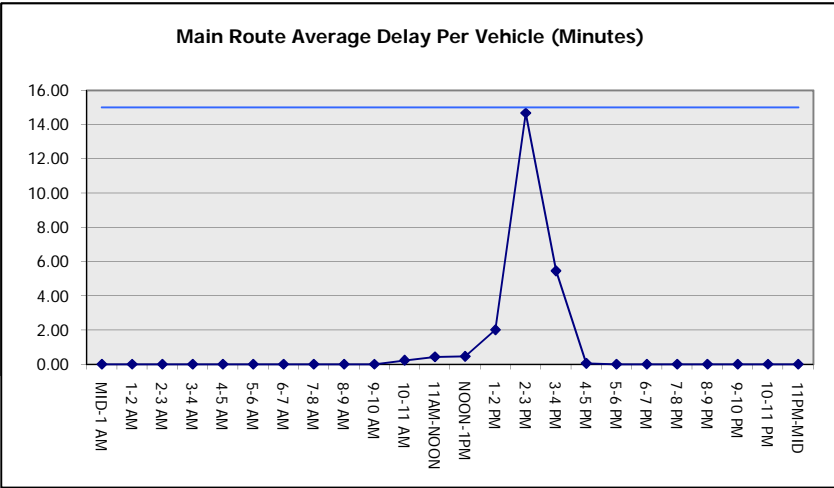
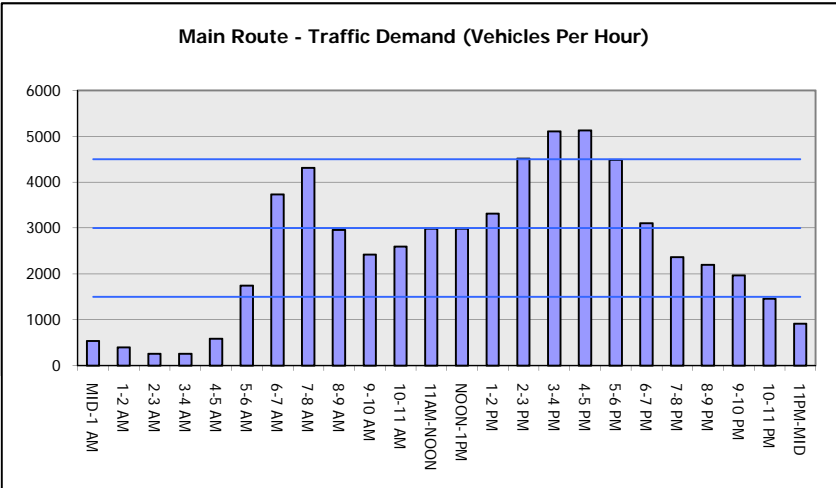
AVERAGE ACCIDENT NUMBERS (PIA/DAY)	
MAIN ROUTE WITHOUT WORKS	0.0096
MAIN ROUTE WITH WORKS	0.0078
'DIVERSION'	0.0003
PIA: Personal Injury Accidents	
IMPACTS ON ROAD USERS	
ROAD USER COSTS PER DAY	\$17,055
CONGESTED HOURS PER DAY*	1

*Delays Exceeding User-Specified Maximum

IH 794: IH 43 TO LINCOLN MEMORIAL DR (MILWAUKEE COUNTY)
OFF-PEAK DAY CLOSURE
NO DIVERSION ROUTE (MAX QUEUE METHOD)

AUGUST
 Analyzed for 2009
 Construction Season

GRAPHICAL REPRESENTATION OF TRAFFIC MODEL INPUT AND OUTPUT
MON-THUR WESTBOUND DIRECTION



IH 794: IH 43 TO LINCOLN MEMORIAL DR (MILWAUKEE COUNTY) OFF-PEAK DAY CLOSURE NO DIVERSION ROUTE (MAX QUEUE METHOD)	AUGUST
	Analyzed for 2009 Construction Season

SUMMARY OF TRAFFIC MODEL OUTPUT

MON-THUR EASTBOUND DIRECTION

TIME OF DAY	FLOWS AND CAPACITY IN VEH/HR						AVERAGE SPEEDS IN MPH			
	MAIN ROUTE		SITE CAPA CITY	FLOW		AV.DEL PER VEH (MINS)	AVERAGE QUEUE (VEH)	MAIN ROUTE		SITE
	DEMAND FLOW	PCT HEAVY		MAIN ROUTE	'DIVER TED'			WITHOUT WORK ZONE	WITH WORK ZONE	
MID-1 AM	367	0.0	OFF	367	0	0.00	0	70.2	70.2	70.2
1-2 AM	244	0.0	OFF	244	0	0.00	0	70.2	70.2	70.2
2-3 AM	205	0.0	OFF	205	0	0.00	0	70.2	70.2	70.2
3-4 AM	287	0.0	OFF	287	0	0.00	0	70.2	70.2	70.2
4-5 AM	823	0.0	OFF	823	0	0.00	0	69.7	69.7	69.7
5-6 AM	2999	0.0	OFF	2999	0	0.00	0	67.0	67.0	67.0
6-7 AM	5105	0.0	OFF	5105	0	0.00	0	56.0	56.0	56.0
7-8 AM	5464	0.0	OFF	5464	0	0.00	0	53.5	53.5	53.5
8-9 AM	4493	0.0	OFF	4493	0	0.00	0	60.2	60.2	60.2
9-10 AM	3195	0.0	OFF	3195	0	0.00	0	66.8	66.8	66.8
10-11 AM	2969	0.0	3000	2969	0	0.36	0	67.1	47.9	37.8
11AM-NOON	3097	0.0	2999	3097	0	1.05	43	66.9	30.7	37.3
NOON-1PM	3147	0.0	3000	3147	0	3.39	170	66.8	15.3	37.3
1-2 PM	3097	0.0	2999	3097	0	5.66	293	66.9	11.9	37.3
2-3 PM	3155	0.0	3000	3155	0	7.70	406	66.8	10.5	37.3
3-4 PM	3514	0.0	OFF	3514	0	0.54	49	66.4	41.6	41.6
4-5 PM	4089	0.0	OFF	4089	0	0.00	0	62.9	62.9	62.9
5-6 PM	4076	0.0	OFF	4076	0	0.00	0	63.0	63.0	63.0
6-7 PM	3299	0.0	OFF	3299	0	0.00	0	66.6	66.6	66.6
7-8 PM	2513	0.0	OFF	2513	0	0.00	0	67.6	67.6	67.6
8-9 PM	2263	0.0	OFF	2263	0	0.00	0	67.9	67.9	67.9
9-10 PM	1985	0.0	OFF	1985	0	0.00	0	68.2	68.2	68.2
10-11 PM	1445	0.0	OFF	1445	0	0.00	0	68.9	68.9	68.9
11PM-MID	819	0.0	OFF	819	0	0.00	0	69.7	69.7	69.7

"OFF" INDICATES NO ROAD WORK (ALL LANES OPEN TO TRAFFIC)

----- SITE BREAKDOWN DELAYS -----	
BREAKDOWN DURATION (MINS)	0
RANGE OF QUEUE DELAY - MIN (VEH-H) MAX	0.0
AV BREAKDOWNS PER DAY	0.00
AV QUEUE DELAY/DAY (VEH-H)	0.0
AV TOTAL DELAY/DAY (VEH-H)	0.0

----- SITE ACCIDENT DELAYS -----	
BREAKDOWN DURATION (MINS)	0
RANGE OF QUEUE DELAY - MIN (VEH-H) MAX	0
AV BREAKDOWNS PER DAY	0
AV QUEUE DELAY/DAY (VEH-H)	0
AV TOTAL DELAY/DAY (VEH-H)	0

AVERAGE ACCIDENT NUMBERS (PIA/DAY)	
MAIN ROUTE WITHOUT WORKS	0.0100
MAIN ROUTE WITH WORKS	0.0083
'DIVERSION'	0.0000

PIA: Personal Injury Accidents

ECONOMIC IMPACT ON ROAD USERS	
ROAD USER COSTS PER DAY	\$9,604
CONGESTED HOURS PER DAY*	0

*Delays Exceeding User-Specified Maximum

**IH 794: IH 43 TO LINCOLN MEMORIAL DR (MILWAUKEE COUNTY)
OFF-PEAK DAY CLOSURE
NO DIVERSION ROUTE (MAX QUEUE METHOD)**

AUGUST

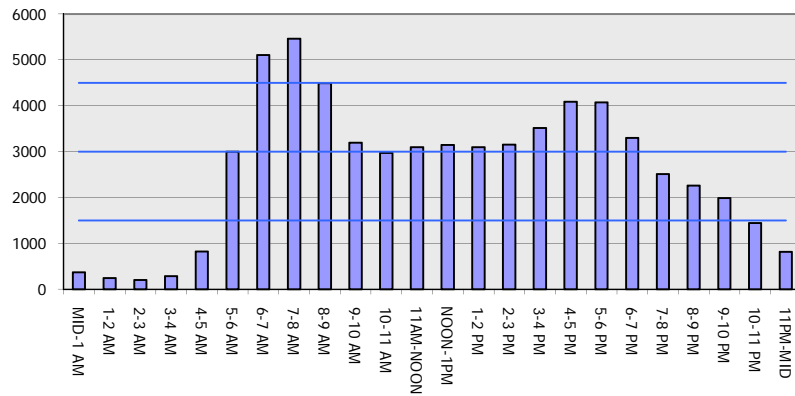
Analyzed for 2009
Construction Season

GRAPHICAL REPRESENTATION OF TRAFFIC MODEL INPUT AND OUTPUT

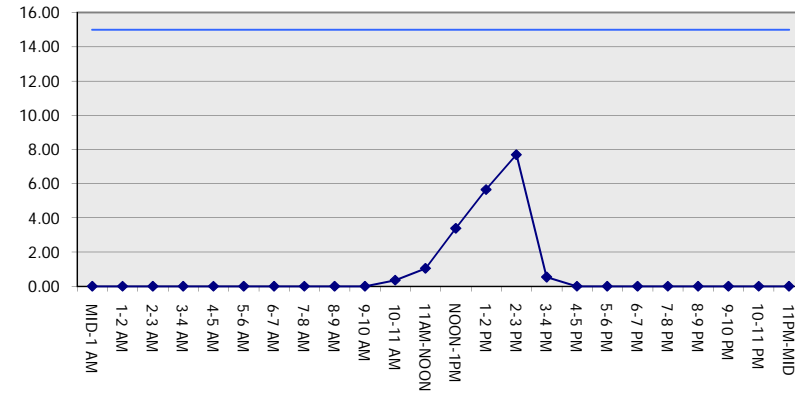
MON-THUR

EASTBOUND DIRECTION

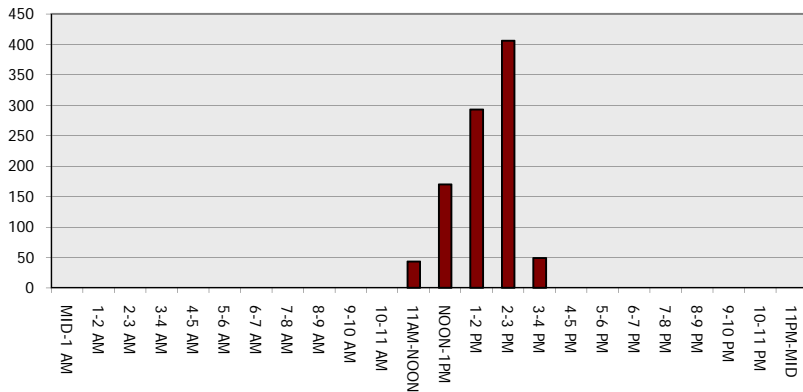
Main Route - Traffic Demand (Vehicles Per Hour)



Main Route Average Delay Per Vehicle (Minutes)



Main Route - Average Queue Length (Vehicles)



Main Route - Average Speed (MPH)

