

IH 794: IH 43 TO LINCOLN MEMORIAL DR (MILWAUKEE COUNTY) OFF-PEAK DAY CLOSURE NO DIVERSION ROUTE (MAX QUEUE METHOD)	AUGUST
	Analyzed for 2009 Construction Season

SUMMARY OF TRAFFIC MODEL OUTPUT

FRIDAY WESTBOUND DIRECTION

TIME OF DAY	FLOWS AND CAPACITY IN VEH/HR						AVERAGE SPEEDS IN MPH			
	MAIN ROUTE		SITE CAPA CITY	FLOW		AV.DEL PER VEH (MINS)	AVERAGE QUEUE (VEH)	MAIN ROUTE		SITE
	DEMAND FLOW	PCT HEAVY		MAIN ROUTE	'DIVER TED'			WITHOUT WORK ZONE	WITH WORK ZONE	
MID-1 AM	889	0.0	OFF	889	0	0.00	0	69.6	69.6	69.6
1-2 AM	823	0.0	OFF	823	0	0.00	0	69.7	69.7	69.7
2-3 AM	449	0.0	OFF	449	0	0.00	0	70.2	70.2	70.2
3-4 AM	347	0.0	OFF	347	0	0.00	0	70.2	70.2	70.2
4-5 AM	569	0.0	OFF	569	0	0.00	0	70.0	70.0	70.0
5-6 AM	1501	0.0	OFF	1501	0	0.00	0	68.9	68.9	68.9
6-7 AM	3326	0.0	OFF	3326	0	0.00	0	66.6	66.6	66.6
7-8 AM	4266	0.0	OFF	4266	0	0.00	0	61.7	61.7	61.7
8-9 AM	3159	0.0	OFF	3159	0	0.00	0	66.8	66.8	66.8
9-10 AM	2730	0.0	OFF	2730	0	0.00	0	67.3	67.3	67.3
10-11 AM	3037	0.0	2999	3037	0	0.63	20	66.9	39.4	37.9
11AM-NOON	3727	0.0	3000	3727	0	7.22	419	65.4	11.2	37.3
NOON-1PM	3812	0.0	2999	3091	721	17.03+	922	64.8	8.2	37.3
1-2 PM	3953	0.0	3000	3017	936	16.94+	919	63.8	8.2	37.3
2-3 PM	4516	0.0	3000	3079	1437	17.63+	967	60.0	8.1	37.3
3-4 PM	4822	0.0	OFF	4822	0	4.34	420	57.9	11.2	11.2
4-5 PM	4886	0.0	OFF	4886	0	0.00	0	57.5	57.5	57.5
5-6 PM	3989	0.0	OFF	3989	0	0.00	0	63.6	63.6	63.6
6-7 PM	2858	0.0	OFF	2858	0	0.00	0	67.2	67.2	67.2
7-8 PM	2158	0.0	OFF	2158	0	0.00	0	68.1	68.1	68.1
8-9 PM	2166	0.0	OFF	2166	0	0.00	0	68.1	68.1	68.1
9-10 PM	2353	0.0	OFF	2353	0	0.00	0	67.8	67.8	67.8
10-11 PM	2442	0.0	OFF	2442	0	0.00	0	67.7	67.7	67.7
11PM-MID	2049	0.0	OFF	2049	0	0.00	0	68.2	68.2	68.2

"OFF" INDICATES NO ROAD WORK (ALL LANES OPEN TO TRAFFIC)

+ INDICATES QUEUEING EXCEEDS USER-SPECIFIED MAXIMUM LIMIT

----- SITE BREAKDOWN DELAYS -----	
BREAKDOWN DURATION (MINS)	0
RANGE OF QUEUE DELAY - MIN (VEH-H) MAX	0.0
AV BREAKDOWNS PER DAY	0.00
AV QUEUE DELAY/DAY (VEH-H)	0.0
AV TOTAL DELAY/DAY (VEH-H)	0.0

----- SITE ACCIDENT DELAYS -----	
BREAKDOWN DURATION (MINS)	0
RANGE OF QUEUE DELAY - MIN (VEH-H) MAX	0
AV BREAKDOWNS PER DAY	0
AV QUEUE DELAY/DAY (VEH-H)	0
AV TOTAL DELAY/DAY (VEH-H)	0

AVERAGE ACCIDENT NUMBERS (PIA/DAY)	
MAIN ROUTE WITHOUT WORKS	0.0103
MAIN ROUTE WITH WORKS	0.0081
'DIVERSION'	0.0011
PIA: Personal Injury Accidents	
IMPACTS ON ROAD USERS	
ROAD USER COSTS PER DAY	\$53,176
CONGESTED HOURS PER DAY*	3

*Delays Exceeding User-Specified Maximum

IH 794: IH 43 TO LINCOLN MEMORIAL DR (MILWAUKEE COUNTY)
OFF-PEAK DAY CLOSURE
NO DIVERSION ROUTE (MAX QUEUE METHOD)

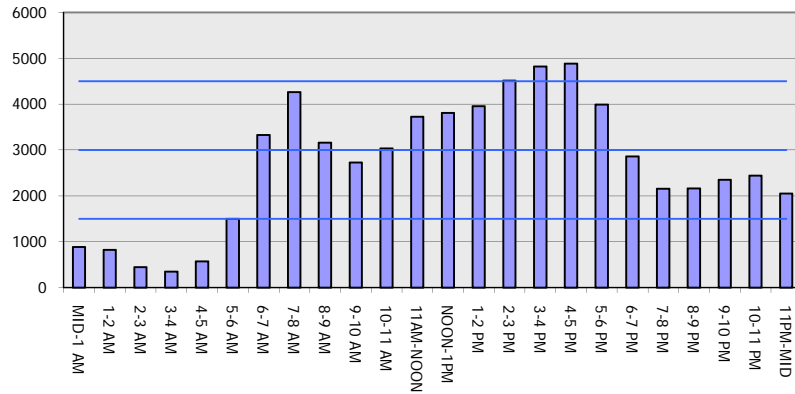
AUGUST

Analyzed for 2009
 Construction Season

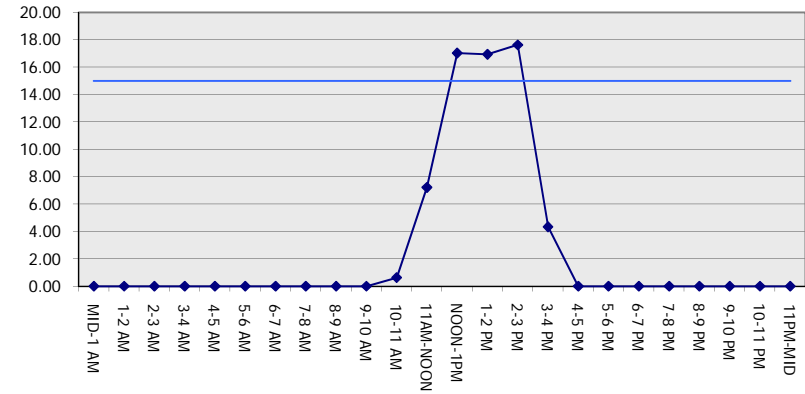
GRAPHICAL REPRESENTATION OF TRAFFIC MODEL INPUT AND OUTPUT

FRIDAY WESTBOUND DIRECTION

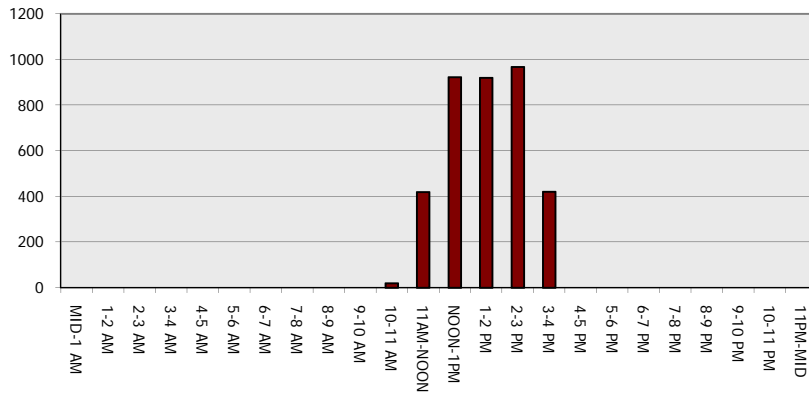
Main Route - Traffic Demand (Vehicles Per Hour)



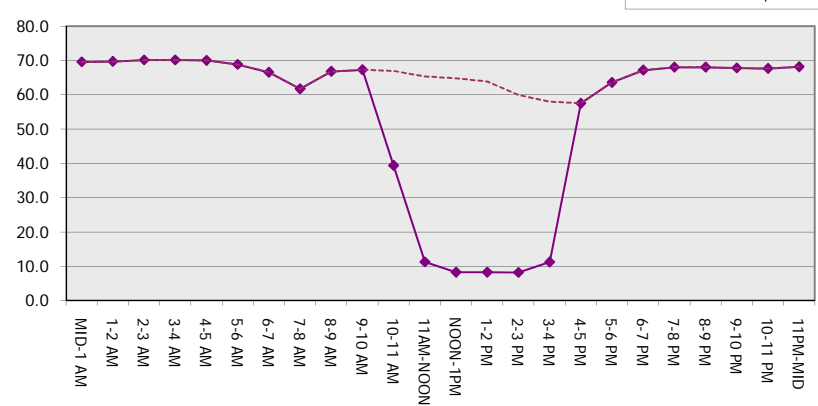
Main Route Average Delay Per Vehicle (Minutes)



Main Route - Average Queue Length (Vehicles)



Main Route - Average Speed (MPH)



IH 794: IH 43 TO LINCOLN MEMORIAL DR (MILWAUKEE COUNTY) OFF-PEAK DAY CLOSURE NO DIVERSION ROUTE (MAX QUEUE METHOD)	AUGUST
	Analyzed for 2009 Construction Season

SUMMARY OF TRAFFIC MODEL OUTPUT

FRIDAY EASTBOUND DIRECTION

TIME OF DAY	FLOWS AND CAPACITY IN VEH/HR						AVERAGE SPEEDS IN MPH			
	MAIN ROUTE		SITE CAPA CITY	FLOW		AV.DEL PER VEH (MINS)	AVERAGE QUEUE (VEH)	MAIN ROUTE		SITE
	DEMAND FLOW	PCT HEAVY		MAIN ROUTE	'DIVER TED'			WITHOUT WORK ZONE	WITH WORK ZONE	
MID-1 AM	637	0.0	OFF	637	0	0.00	0	69.9	69.9	69.9
1-2 AM	424	0.0	OFF	424	0	0.00	0	70.2	70.2	70.2
2-3 AM	307	0.0	OFF	307	0	0.00	0	70.2	70.2	70.2
3-4 AM	361	0.0	OFF	361	0	0.00	0	70.2	70.2	70.2
4-5 AM	832	0.0	OFF	832	0	0.00	0	69.7	69.7	69.7
5-6 AM	2668	0.0	OFF	2668	0	0.00	0	67.4	67.4	67.4
6-7 AM	4733	0.0	OFF	4733	0	0.00	0	58.5	58.5	58.5
7-8 AM	5414	0.0	OFF	5414	0	0.00	0	53.8	53.8	53.8
8-9 AM	4312	0.0	OFF	4312	0	0.00	0	61.4	61.4	61.4
9-10 AM	3187	0.0	OFF	3187	0	0.00	0	66.8	66.8	66.8
10-11 AM	3078	0.0	2999	3078	0	0.96	36	66.9	32.2	37.3
11AM-NOON	3270	0.0	3000	3270	0	3.88	206	66.7	14.4	37.3
NOON-1PM	3292	0.0	2999	3292	0	9.15	489	66.6	9.9	37.3
1-2 PM	3412	0.0	3000	3241	171	15.18+	819	66.5	8.5	37.3
2-3 PM	3506	0.0	3000	3018	487	16.93+	913	66.4	8.3	37.3
3-4 PM	3871	0.0	OFF	3871	0	2.00	189	64.4	20.5	20.5
4-5 PM	4148	0.0	OFF	4148	0	0.00	0	62.5	62.5	62.5
5-6 PM	3971	0.0	OFF	3971	0	0.00	0	63.7	63.7	63.7
6-7 PM	3782	0.0	OFF	3782	0	0.00	0	65.0	65.0	65.0
7-8 PM	2904	0.0	OFF	2904	0	0.00	0	67.1	67.1	67.1
8-9 PM	2644	0.0	OFF	2644	0	0.00	0	67.4	67.4	67.4
9-10 PM	2601	0.0	OFF	2601	0	0.00	0	67.5	67.5	67.5
10-11 PM	2203	0.0	OFF	2203	0	0.00	0	68.0	68.0	68.0
11PM-MID	1457	0.0	OFF	1457	0	0.00	0	68.9	68.9	68.9

"OFF" INDICATES NO ROAD WORK (ALL LANES OPEN TO TRAFFIC)

+ INDICATES QUEUEING EXCEEDS USER-SPECIFIED MAXIMUM LIMIT

----- SITE BREAKDOWN DELAYS -----	
BREAKDOWN DURATION (MINS)	0
RANGE OF QUEUE DELAY - MIN (VEH-H) MAX	0.0
AV BREAKDOWNS PER DAY	0.00
AV QUEUE DELAY/DAY (VEH-H)	0.0
AV TOTAL DELAY/DAY (VEH-H)	0.0

----- SITE ACCIDENT DELAYS -----	
BREAKDOWN DURATION (MINS)	0
RANGE OF QUEUE DELAY - MIN (VEH-H) MAX	0
AV BREAKDOWNS PER DAY	0
AV QUEUE DELAY/DAY (VEH-H)	0
AV TOTAL DELAY/DAY (VEH-H)	0

AVERAGE ACCIDENT NUMBERS (PIA/DAY)	
MAIN ROUTE WITHOUT WORKS	0.0107
MAIN ROUTE WITH WORKS	0.0088
'DIVERSION'	0.0002

PIA: Personal Injury Accidents

ECONOMIC IMPACT ON ROAD USERS	
ROAD USER COSTS PER DAY	\$33,515
CONGESTED HOURS PER DAY*	2

*Delays Exceeding User-Specified Maximum

**IH 794: IH 43 TO LINCOLN MEMORIAL DR (MILWAUKEE COUNTY)
 OFF-PEAK DAY CLOSURE
 NO DIVERSION ROUTE (MAX QUEUE METHOD)**

AUGUST
 Analyzed for 2009
 Construction Season

GRAPHICAL REPRESENTATION OF TRAFFIC MODEL INPUT AND OUTPUT
FRIDAY EASTBOUND DIRECTION

