

<b>IH 794: IH 43 TO LINCOLN MEMORIAL DR (MILWAUKEE COUNTY)</b> <b>OFF-PEAK DAY 2 LANE CLOSURE</b> <b>NO DIVERSION ROUTE (MAX QUEUE METHOD)</b>	<b>MAY</b>
	Analyzed for 2009 Construction Season

**SUMMARY OF TRAFFIC MODEL OUTPUT**

SATURDAY WESTBOUND DIRECTION

TIME OF DAY	FLOWS AND CAPACITY IN VEH/HR						AVERAGE SPEEDS IN MPH				
	MAIN ROUTE		SITE CAPA CITY	FLOW		AV.DEL PER VEH (MINS)	AVERAGE QUEUE (VEH)	MAIN ROUTE		SITE	
	DEMAND FLOW	PCT HEAVY		MAIN ROUTE	'DIVER TED'			WITHOUT WORK ZONE	WITH WORK ZONE		
MID-1 AM	1110	0.0	OFF	1110	0	0.00	0	69.4	69.4	69.4	
1-2 AM	1003	0.0	OFF	1003	0	0.00	0	69.5	69.5	69.5	
2-3 AM	690	0.0	OFF	690	0	0.00	0	69.9	69.9	69.9	
3-4 AM	319	0.0	OFF	319	0	0.00	0	70.2	70.2	70.2	
4-5 AM	340	0.0	OFF	340	0	0.00	0	70.2	70.2	70.2	
5-6 AM	600	0.0	OFF	600	0	0.00	0	70.0	70.0	70.0	
6-7 AM	1060	0.0	OFF	1060	0	0.00	0	69.4	69.4	69.4	
7-8 AM	1535	0.0	OFF	1535	0	0.00	0	68.8	68.8	68.8	
8-9 AM	1956	0.0	1499	1956	0	6.66	202	68.3	9.4	30.8	
9-10 AM	2367	0.0	1499	1494	873	16.69+	422	67.8	5.4	30.8	
10-11 AM	2709	0.0	1499	1484	1226	16.81+	426	67.4	5.4	30.8	
11AM-NOON	2945	0.0	1499	1498	1447	16.97+	430	67.1	5.4	30.8	
NOON-1PM	2965	0.0	1500	1500	1466	16.98+	431	67.1	5.4	30.8	
1-2 PM	2997	0.0	1499	1501	1497	17.01+	431	67.0	5.3	30.8	
2-3 PM	3057	0.0	1499	1501	1556	17.06+	433	66.9	5.3	30.8	
3-4 PM	2753	0.0	1500	1495	1258	16.81+	426	67.3	5.4	30.8	
4-5 PM	2575	0.0	1499	1498	1077	16.71+	423	67.5	5.4	30.8	
5-6 PM	2067	0.0	1500	1500	567	16.66+	422	68.2	5.4	30.8	
6-7 PM	1936	0.0	OFF	1936	0	0.23	22	68.3	54.2	54.2	
7-8 PM	1659	0.0	OFF	1659	0	0.00	0	68.7	68.7	68.7	
8-9 PM	1773	0.0	OFF	1773	0	0.00	0	68.6	68.6	68.6	
9-10 PM	1987	0.0	OFF	1987	0	0.00	0	68.2	68.2	68.2	
10-11 PM	2134	0.0	OFF	2134	0	0.00	0	68.1	68.1	68.1	
11PM-MID	1531	0.0	OFF	1531	0	0.00	0	68.8	68.8	68.8	

"OFF" INDICATES NO ROAD WORK (ALL LANES OPEN TO TRAFFIC)

+ INDICATES QUEUEING EXCEEDS USER-SPECIFIED MAXIMUM LIMIT

*----- SITE BREAKDOWN DELAYS -----*	
BREAKDOWN DURATION (MINS)	0
RANGE OF QUEUE DELAY - MIN (VEH-H) MAX	0.0
AV BREAKDOWNS PER DAY	0.00
AV QUEUE DELAY/DAY (VEH-H)	0.0
AV TOTAL DELAY/DAY (VEH-H)	0.0

*----- SITE ACCIDENT DELAYS -----*	
BREAKDOWN DURATION (MINS)	0
RANGE OF QUEUE DELAY - MIN (VEH-H) MAX	0
AV BREAKDOWNS PER DAY	0
AV QUEUE DELAY/DAY (VEH-H)	0
AV TOTAL DELAY/DAY (VEH-H)	0

AVERAGE ACCIDENT NUMBERS (PIA/DAY)	
MAIN ROUTE WITHOUT WORKS	0.0070
MAIN ROUTE WITH WORKS	0.0036
'DIVERSION'	0.0040
PIA: Personal Injury Accidents	
IMPACTS ON ROAD USERS	
ROAD USER COSTS PER DAY	\$117,799
CONGESTED HOURS PER DAY*	9

\*Delays Exceeding User-Specified Maximum

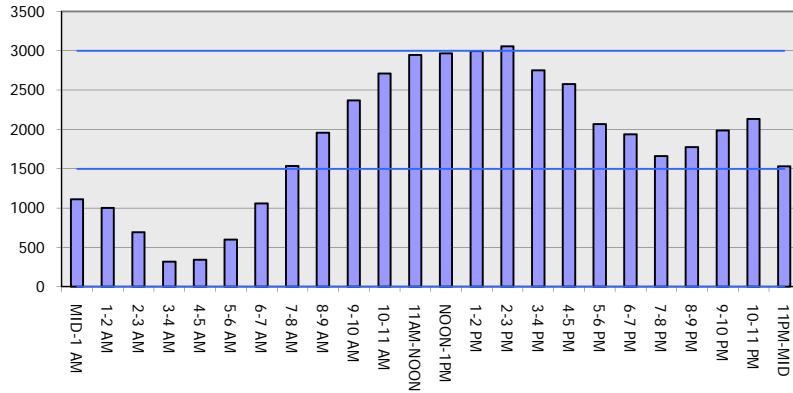
**IH 794: IH 43 TO LINCOLN MEMORIAL DR (MILWAUKEE COUNTY)**  
**OFF-PEAK DAY 2 LANE CLOSURE**  
**NO DIVERSION ROUTE (MAX QUEUE METHOD)**

**MAY**  
 Analyzed for 2009  
 Construction Season

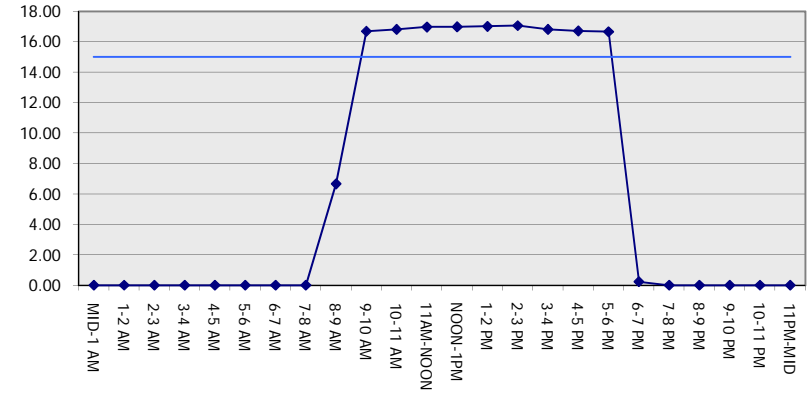
**GRAPHICAL REPRESENTATION OF TRAFFIC MODEL INPUT AND OUTPUT**

**SATURDAY WESTBOUND DIRECTION**

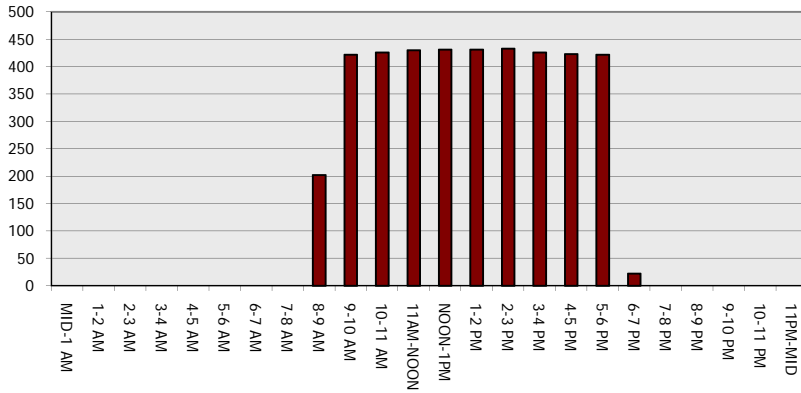
**Main Route - Traffic Demand (Vehicles Per Hour)**



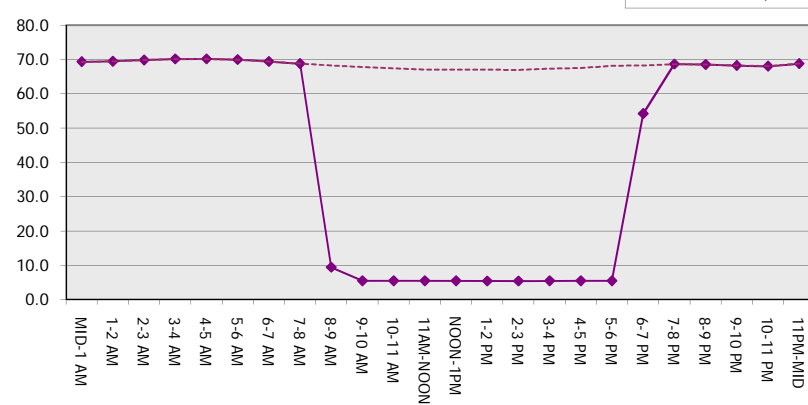
**Main Route Average Delay Per Vehicle (Minutes)**



**Main Route - Average Queue Length (Vehicles)**



**Main Route - Average Speed (MPH)**



<b>IH 794: IH 43 TO LINCOLN MEMORIAL DR (MILWAUKEE COUNTY)</b> <b>OFF-PEAK DAY 2 LANE CLOSURE</b> <b>NO DIVERSION ROUTE (MAX QUEUE METHOD)</b>	<b>MAY</b>
	Analyzed for 2009 Construction Season

**SUMMARY OF TRAFFIC MODEL OUTPUT**

SATURDAY EASTBOUND DIRECTION

TIME OF DAY	FLOWS AND CAPACITY IN VEH/HR						AVERAGE SPEEDS IN MPH			
	MAIN ROUTE		SITE CAPA CITY	FLOW		AV.DEL PER VEH (MINS)	AVERAGE QUEUE (VEH)	MAIN ROUTE		SITE
	DEMAND FLOW	PCT HEAVY		MAIN ROUTE	'DIVER TED'			WITHOUT WORK ZONE	WITH WORK ZONE	
MID-1 AM	691	0.0	OFF	691	0	0.00	0	69.9	69.9	69.9
1-2 AM	418	0.0	OFF	418	0	0.00	0	70.2	70.2	70.2
2-3 AM	308	0.0	OFF	308	0	0.00	0	70.2	70.2	70.2
3-4 AM	252	0.0	OFF	252	0	0.00	0	70.2	70.2	70.2
4-5 AM	368	0.0	OFF	368	0	0.00	0	70.2	70.2	70.2
5-6 AM	699	0.0	OFF	699	0	0.00	0	69.9	69.9	69.9
6-7 AM	1074	0.0	OFF	1074	0	0.00	0	69.4	69.4	69.4
7-8 AM	1487	0.0	OFF	1487	0	0.00	0	68.9	68.9	68.9
8-9 AM	2144	0.0	1499	1943	201	9.21+	262	68.1	7.6	30.8
9-10 AM	2371	0.0	1500	1497	873	16.68+	422	67.8	5.4	30.8
10-11 AM	2479	0.0	1499	1497	982	16.69+	422	67.6	5.4	30.8
11AM-NOON	2782	0.0	1499	1492	1290	16.83+	427	67.3	5.4	30.8
NOON-1PM	2906	0.0	1499	1500	1406	16.93+	429	67.1	5.4	30.8
1-2 PM	2919	0.0	1500	1500	1418	16.94+	430	67.1	5.4	30.8
2-3 PM	2996	0.0	1499	1502	1495	17.01+	431	67.0	5.3	30.8
3-4 PM	3032	0.0	1500	1501	1531	17.04+	432	66.9	5.3	30.8
4-5 PM	3070	0.0	1500	1501	1569	17.07+	433	66.9	5.3	30.8
5-6 PM	3374	0.0	1499	1500	1874	17.14+	435	66.6	5.3	30.8
6-7 PM	3257	0.0	OFF	3257	0	0.36	34	66.7	47.8	47.8
7-8 PM	2487	0.0	OFF	2487	0	0.00	0	67.6	67.6	67.6
8-9 PM	2294	0.0	OFF	2294	0	0.00	0	67.9	67.9	67.9
9-10 PM	2442	0.0	OFF	2442	0	0.00	0	67.7	67.7	67.7
10-11 PM	2015	0.0	OFF	2015	0	0.00	0	68.2	68.2	68.2
11PM-MID	1340	0.0	OFF	1340	0	0.00	0	69.1	69.1	69.1

"OFF" INDICATES NO ROAD WORK (ALL LANES OPEN TO TRAFFIC)

+ INDICATES QUEUEING EXCEEDS USER-SPECIFIED MAXIMUM LIMIT

*----- SITE BREAKDOWN DELAYS -----*	
BREAKDOWN DURATION (MINS)	0
RANGE OF QUEUE DELAY - MIN	0.0
(VEH-H) MAX	0.0
AV BREAKDOWNS PER DAY	0.00
AV QUEUE DELAY/DAY (VEH-H)	0.0
AV TOTAL DELAY/DAY (VEH-H)	0.0

*----- SITE ACCIDENT DELAYS -----*	
BREAKDOWN DURATION (MINS)	0
RANGE OF QUEUE DELAY - MIN	0
(VEH-H) MAX	0
AV BREAKDOWNS PER DAY	0
AV QUEUE DELAY/DAY (VEH-H)	0
AV TOTAL DELAY/DAY (VEH-H)	0

AVERAGE ACCIDENT NUMBERS (PIA/DAY)	
MAIN ROUTE WITHOUT WORKS	0.0075
MAIN ROUTE WITH WORKS	0.0038
'DIVERSION'	0.0047

PIA: Personal Injury Accidents

ECONOMIC IMPACT ON ROAD USERS	
ROAD USER COSTS PER DAY	\$127,334
CONGESTED HOURS PER DAY*	10

\*Delays Exceeding User-Specified Maximum

**IH 794: IH 43 TO LINCOLN MEMORIAL DR (MILWAUKEE COUNTY)  
 OFF-PEAK DAY 2 LANE CLOSURE  
 NO DIVERSION ROUTE (MAX QUEUE METHOD)**

**MAY**  
 Analyzed for 2009  
 Construction Season

**GRAPHICAL REPRESENTATION OF TRAFFIC MODEL INPUT AND OUTPUT**  
**SATURDAY EASTBOUND DIRECTION**

