

IH 43/894: HALE INTERCHANGE TO STH 27 (MILWAUKEE COUNTY) OFF-PEAK DAY 2 LANE CLOSURE NO DIVERSION ROUTE (MAX QUEUE METHOD)	OCTOBER
	Analyzed for 2009 Construction Season

SUMMARY OF TRAFFIC MODEL OUTPUT

SUNDAY SOUTHBOUND DIRECTION

TIME OF DAY	FLOWS AND CAPACITY IN VEH/HR						AVERAGE SPEEDS IN MPH				
	MAIN ROUTE		SITE CAPA CITY	FLOW		AV.DEL PER VEH (MINS)	AVERAGE QUEUE (VEH)	MAIN ROUTE		SITE	
	DEMAND FLOW	PCT HEAVY		MAIN ROUTE	'DIVER TED'			WITHOUT WORK ZONE	WITH WORK ZONE		
MID-1 AM	1053	0.0	OFF	1053	0	0.00	0	69.4	69.4	69.4	
1-2 AM	592	0.0	OFF	592	0	0.00	0	70.0	70.0	70.0	
2-3 AM	547	0.0	OFF	547	0	0.00	0	70.0	70.0	70.0	
3-4 AM	332	0.0	OFF	332	0	0.00	0	70.2	70.2	70.2	
4-5 AM	311	0.0	OFF	311	0	0.00	0	70.2	70.2	70.2	
5-6 AM	540	0.0	OFF	540	0	0.00	0	70.0	70.0	70.0	
6-7 AM	872	0.0	OFF	872	0	0.00	0	69.7	69.7	69.7	
7-8 AM	1159	0.0	OFF	1159	0	0.00	0	69.3	69.3	69.3	
8-9 AM	1680	0.0	OFF	1680	0	0.00	0	68.6	68.6	68.6	
9-10 AM	2399	0.0	1499	1852	546	10.90+	288	67.8	17.5	30.8	
10-11 AM	3233	0.0	1500	1500	1733	16.26+	400	66.7	12.8	30.8	
11AM-NOON	3796	0.0	1500	1500	2296	16.15+	400	64.9	12.8	30.8	
NOON-1PM	4119	0.0	1500	1500	2619	16.01+	400	62.7	12.8	30.8	
1-2 PM	3971	0.0	1500	1500	2471	16.07+	400	63.7	12.8	30.8	
2-3 PM	3854	0.0	1500	1500	2354	16.12+	400	64.5	12.8	30.8	
3-4 PM	4088	0.0	1500	1500	2588	16.02+	400	62.9	12.8	30.8	
4-5 PM	3987	0.0	1500	1500	2487	16.07+	400	63.6	12.8	30.8	
5-6 PM	3641	0.0	1500	1500	2141	16.21+	400	66.0	12.8	30.8	
6-7 PM	3339	0.0	1500	1500	1839	16.25+	400	66.6	12.8	30.8	
7-8 PM	2808	0.0	OFF	2808	0	0.22	19	67.3	63.6	63.6	
8-9 PM	2028	0.0	OFF	2028	0	0.00	0	68.2	68.2	68.2	
9-10 PM	1801	0.0	OFF	1801	0	0.00	0	68.5	68.5	68.5	
10-11 PM	1370	0.0	OFF	1370	0	0.00	0	69.1	69.1	69.1	
11PM-MID	891	0.0	OFF	891	0	0.00	0	69.6	69.6	69.6	

"OFF" INDICATES NO ROAD WORK (ALL LANES OPEN TO TRAFFIC)

+ INDICATES QUEUEING EXCEEDS USER-SPECIFIED MAXIMUM LIMIT

----- SITE BREAKDOWN DELAYS -----	
BREAKDOWN DURATION (MINS)	0
RANGE OF QUEUE DELAY - MIN (VEH-H) MAX	0.0
AV BREAKDOWNS PER DAY	0.00
AV QUEUE DELAY/DAY (VEH-H)	0.0
AV TOTAL DELAY/DAY (VEH-H)	0.0

----- SITE ACCIDENT DELAYS -----	
BREAKDOWN DURATION (MINS)	0
RANGE OF QUEUE DELAY - MIN (VEH-H) MAX	0
AV BREAKDOWNS PER DAY	0
AV QUEUE DELAY/DAY (VEH-H)	0
AV TOTAL DELAY/DAY (VEH-H)	0

AVERAGE ACCIDENT NUMBERS (PIA/DAY)	
MAIN ROUTE WITHOUT WORKS	0.0359
MAIN ROUTE WITH WORKS	0.0204
'DIVERSION'	0.0334
PIA: Personal Injury Accidents	
IMPACTS ON ROAD USERS	
ROAD USER COSTS PER DAY	\$160,069
CONGESTED HOURS PER DAY*	10

*Delays Exceeding User-Specified Maximum

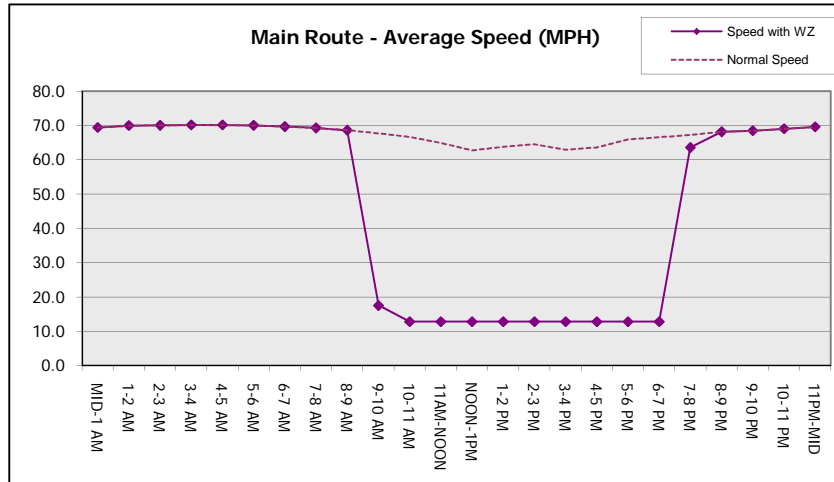
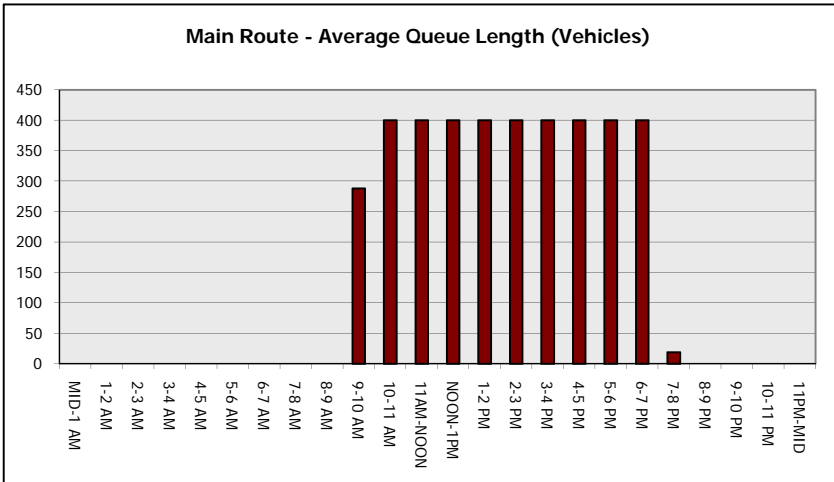
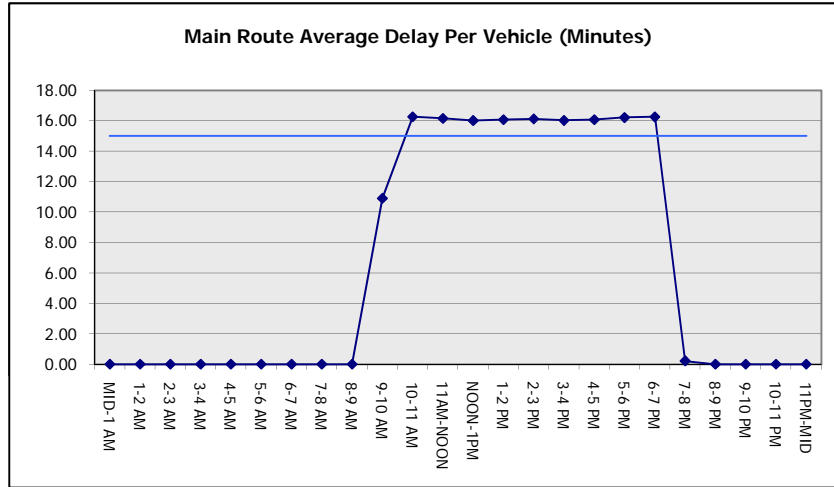
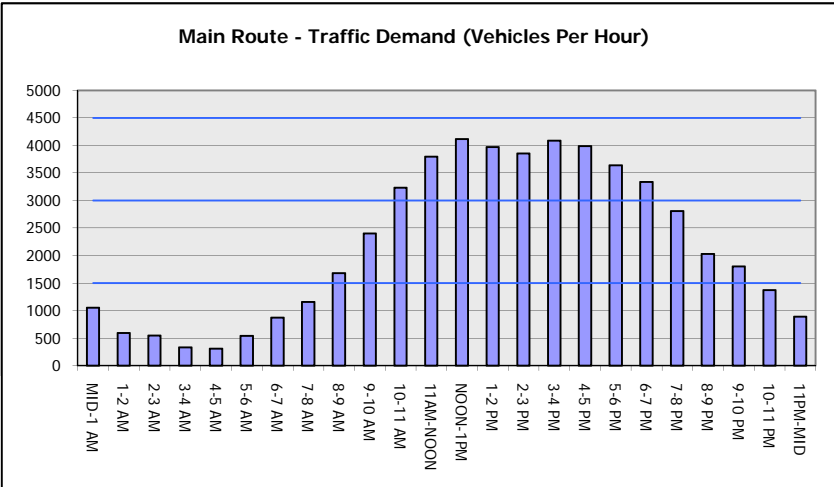
IH 43/894: HALE INTERCHANGE TO STH 27 (MILWAUKEE COUNTY)
OFF-PEAK DAY 2 LANE CLOSURE
NO DIVERSION ROUTE (MAX QUEUE METHOD)

OCTOBER

Analyzed for 2009
 Construction Season

GRAPHICAL REPRESENTATION OF TRAFFIC MODEL INPUT AND OUTPUT

SUNDAY SOUTHBOUND DIRECTION



IH 43/894: HALE INTERCHANGE TO STH 27 (MILWAUKEE COUNTY) OFF-PEAK DAY 2 LANE CLOSURE NO DIVERSION ROUTE (MAX QUEUE METHOD)	OCTOBER
	Analyzed for 2009 Construction Season

SUMMARY OF TRAFFIC MODEL OUTPUT

SUNDAY NORTHBOUND DIRECTION

TIME OF DAY	FLOWS AND CAPACITY IN VEH/HR						AVERAGE SPEEDS IN MPH			
	MAIN ROUTE		SITE CAPA CITY	FLOW		AV.DEL PER VEH (MINS)	AVERAGE QUEUE (VEH)	MAIN ROUTE		SITE
	DEMAND FLOW	PCT HEAVY		MAIN ROUTE	'DIVER TED'			WITHOUT WORK ZONE	WITH WORK ZONE	
MID-1 AM	892	0.0	OFF	892	0	0.00	0	69.6	69.6	69.6
1-2 AM	520	0.0	OFF	520	0	0.00	0	70.1	70.1	70.1
2-3 AM	431	0.0	OFF	431	0	0.00	0	70.2	70.2	70.2
3-4 AM	315	0.0	OFF	315	0	0.00	0	70.2	70.2	70.2
4-5 AM	396	0.0	OFF	396	0	0.00	0	70.2	70.2	70.2
5-6 AM	695	0.0	OFF	695	0	0.00	0	69.9	69.9	69.9
6-7 AM	871	0.0	OFF	871	0	0.00	0	69.7	69.7	69.7
7-8 AM	1219	0.0	OFF	1219	0	0.00	0	69.2	69.2	69.2
8-9 AM	1672	0.0	OFF	1672	0	0.00	0	68.7	68.7	68.7
9-10 AM	2402	0.0	1499	1868	533	11.14+	292	67.8	17.3	30.8
10-11 AM	2991	0.0	1500	1500	1491	16.27+	400	67.0	12.8	30.8
11AM-NOON	3563	0.0	1500	1500	2063	16.23+	400	66.3	12.8	30.8
NOON-1PM	4126	0.0	1500	1500	2626	16.01+	400	62.7	12.8	30.8
1-2 PM	4234	0.0	1500	1500	2734	15.96+	400	61.9	12.8	30.8
2-3 PM	4268	0.0	1500	1500	2768	15.94+	400	61.7	12.8	30.8
3-4 PM	4524	0.0	1500	1500	3024	15.82+	400	59.9	12.8	30.8
4-5 PM	4316	0.0	1500	1500	2816	15.92+	400	61.4	12.8	30.8
5-6 PM	3844	0.0	1500	1500	2344	16.13+	400	64.6	12.8	30.8
6-7 PM	3726	0.0	1500	1500	2226	16.18+	400	65.4	12.8	30.8
7-8 PM	2996	0.0	OFF	2996	0	0.25	22	67.0	62.9	62.9
8-9 PM	2162	0.0	OFF	2162	0	0.00	0	68.1	68.1	68.1
9-10 PM	1585	0.0	OFF	1585	0	0.00	0	68.7	68.7	68.7
10-11 PM	1119	0.0	OFF	1119	0	0.00	0	69.4	69.4	69.4
11PM-MID	789	0.0	OFF	789	0	0.00	0	69.7	69.7	69.7

"OFF" INDICATES NO ROAD WORK (ALL LANES OPEN TO TRAFFIC)

+ INDICATES QUEUEING EXCEEDS USER-SPECIFIED MAXIMUM LIMIT

----- SITE BREAKDOWN DELAYS -----	
BREAKDOWN DURATION (MINS)	0
RANGE OF QUEUE DELAY - MIN	0.0
(VEH-H) MAX	0.0
AV BREAKDOWNS PER DAY	0.00
AV QUEUE DELAY/DAY (VEH-H)	0.0
AV TOTAL DELAY/DAY (VEH-H)	0.0

----- SITE ACCIDENT DELAYS -----	
BREAKDOWN DURATION (MINS)	0
RANGE OF QUEUE DELAY - MIN	0
(VEH-H) MAX	0
AV BREAKDOWNS PER DAY	0
AV QUEUE DELAY/DAY (VEH-H)	0
AV TOTAL DELAY/DAY (VEH-H)	0

AVERAGE ACCIDENT NUMBERS (PIA/DAY)	
MAIN ROUTE WITHOUT WORKS	0.0367
MAIN ROUTE WITH WORKS	0.0202
'DIVERSION'	0.0359

PIA: Personal Injury Accidents

ECONOMIC IMPACT ON ROAD USERS	
ROAD USER COSTS PER DAY	\$166,430
CONGESTED HOURS PER DAY*	10

*Delays Exceeding User-Specified Maximum

IH 43/894: HALE INTERCHANGE TO STH 27 (MILWAUKEE COUNTY)
OFF-PEAK DAY 2 LANE CLOSURE
NO DIVERSION ROUTE (MAX QUEUE METHOD)

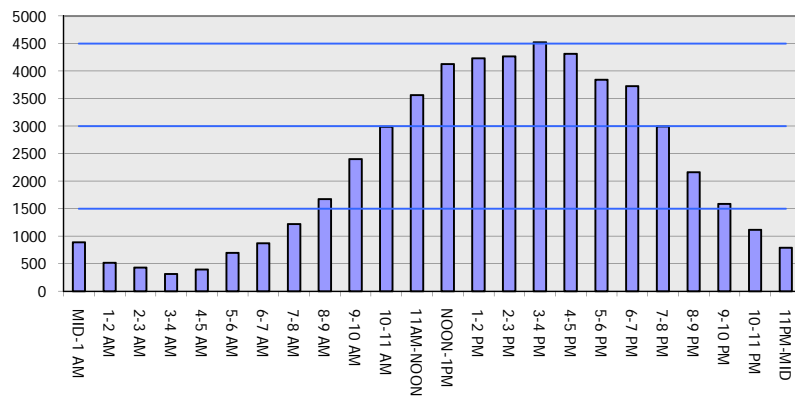
OCTOBER

Analyzed for 2009
 Construction Season

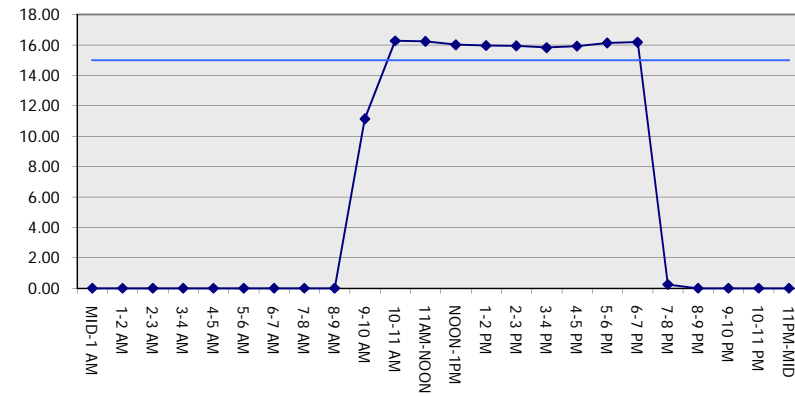
GRAPHICAL REPRESENTATION OF TRAFFIC MODEL INPUT AND OUTPUT

SUNDAY NORTHBOUND DIRECTION

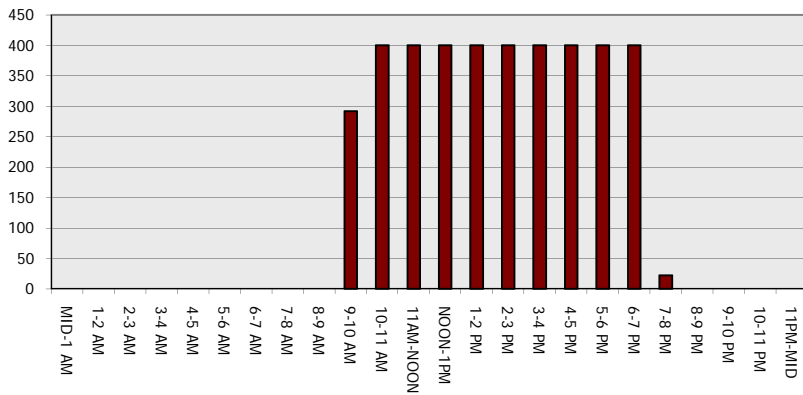
Main Route - Traffic Demand (Vehicles Per Hour)



Main Route Average Delay Per Vehicle (Minutes)



Main Route - Average Queue Length (Vehicles)



Main Route - Average Speed (MPH)

