

<b>IH 43/894: HALE INTERCHANGE TO STH 27 (MILWAUKEE COUNTY)</b> <b>OFF-PEAK DAY CLOSURE</b> <b>NO DIVERSION ROUTE (MAX QUEUE METHOD)</b>	<b>AUGUST</b>
	Analyzed for 2009 Construction Season

**SUMMARY OF TRAFFIC MODEL OUTPUT**

SUNDAY SOUTHBOUND DIRECTION

TIME OF DAY	FLOWS AND CAPACITY IN VEH/HR						AVERAGE SPEEDS IN MPH				
	MAIN ROUTE		SITE CAPA CITY	FLOW		AV.DEL PER VEH (MINS)	AVERAGE QUEUE (VEH)	MAIN ROUTE		SITE	
	DEMAND FLOW	PCT HEAVY		MAIN ROUTE	'DIVER TED'			WITHOUT WORK ZONE	WITH WORK ZONE		
MID-1 AM	1048	0.0	OFF	1048	0	0.00	0	69.4	69.4	69.4	
1-2 AM	616	0.0	OFF	616	0	0.00	0	70.0	70.0	70.0	
2-3 AM	457	0.0	OFF	457	0	0.00	0	70.2	70.2	70.2	
3-4 AM	282	0.0	OFF	282	0	0.00	0	70.2	70.2	70.2	
4-5 AM	302	0.0	OFF	302	0	0.00	0	70.2	70.2	70.2	
5-6 AM	540	0.0	OFF	540	0	0.00	0	70.0	70.0	70.0	
6-7 AM	905	0.0	OFF	905	0	0.00	0	69.6	69.6	69.6	
7-8 AM	1166	0.0	OFF	1166	0	0.00	0	69.3	69.3	69.3	
8-9 AM	1743	0.0	OFF	1743	0	0.00	0	68.6	68.6	68.6	
9-10 AM	2566	0.0	2999	2566	0	0.45	0	67.6	60.5	45.5	
10-11 AM	3286	0.0	2999	3286	0	2.56	116	66.6	40.1	37.3	
11AM-NOON	3427	0.0	2999	3427	0	9.23	488	66.4	19.7	37.3	
NOON-1PM	3642	0.0	2999	3041	601	15.12+	796	66.0	13.6	37.3	
1-2 PM	3977	0.0	3000	3002	975	15.07+	801	63.7	13.5	37.3	
2-3 PM	3881	0.0	3000	3001	880	15.11+	801	64.3	13.5	37.3	
3-4 PM	3951	0.0	3000	3001	950	15.08+	801	63.8	13.5	37.3	
4-5 PM	3827	0.0	3000	3001	827	15.13+	801	64.7	13.5	37.3	
5-6 PM	3511	0.0	3000	3000	511	15.23+	801	66.4	13.5	37.3	
6-7 PM	3124	0.0	3000	3046	79	15.15+	795	66.9	13.6	37.3	
7-8 PM	2778	0.0	OFF	2778	0	1.06	100	67.3	52.7	52.7	
8-9 PM	2360	0.0	OFF	2360	0	0.00	0	67.8	67.8	67.8	
9-10 PM	1953	0.0	OFF	1953	0	0.00	0	68.3	68.3	68.3	
10-11 PM	1482	0.0	OFF	1482	0	0.00	0	68.9	68.9	68.9	
11PM-MID	920	0.0	OFF	920	0	0.00	0	69.6	69.6	69.6	

"OFF" INDICATES NO ROAD WORK (ALL LANES OPEN TO TRAFFIC)

+ INDICATES QUEUEING EXCEEDS USER-SPECIFIED MAXIMUM LIMIT

*----- SITE BREAKDOWN DELAYS -----*	
BREAKDOWN DURATION (MINS)	0
RANGE OF QUEUE DELAY - MIN (VEH-H) MAX	0.0
AV BREAKDOWNS PER DAY	0.00
AV QUEUE DELAY/DAY (VEH-H)	0.0
AV TOTAL DELAY/DAY (VEH-H)	0.0

*----- SITE ACCIDENT DELAYS -----*	
BREAKDOWN DURATION (MINS)	0
RANGE OF QUEUE DELAY - MIN (VEH-H) MAX	0
AV BREAKDOWNS PER DAY	0
AV QUEUE DELAY/DAY (VEH-H)	0
AV TOTAL DELAY/DAY (VEH-H)	0

AVERAGE ACCIDENT NUMBERS (PIA/DAY)	
MAIN ROUTE WITHOUT WORKS	0.0354
MAIN ROUTE WITH WORKS	0.0301
'DIVERSION'	0.0076
PIA: Personal Injury Accidents	
IMPACTS ON ROAD USERS	
ROAD USER COSTS PER DAY	\$119,447
CONGESTED HOURS PER DAY*	7

\*Delays Exceeding User-Specified Maximum

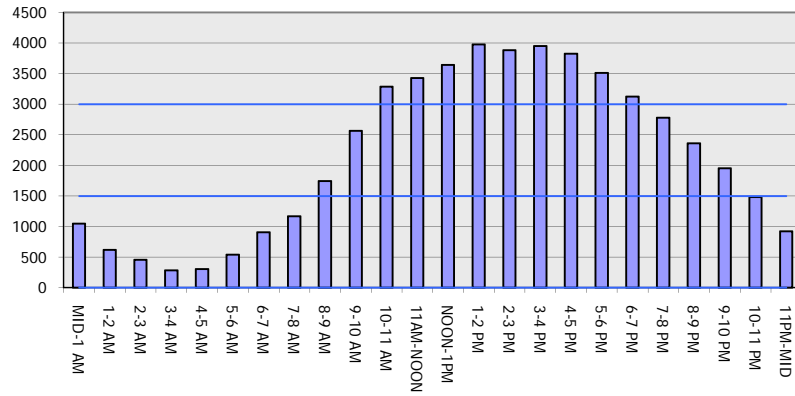
**IH 43/894: HALE INTERCHANGE TO STH 27 (MILWAUKEE COUNTY)**  
**OFF-PEAK DAY CLOSURE**  
**NO DIVERSION ROUTE (MAX QUEUE METHOD)**

**AUGUST**  
 Analyzed for 2009  
 Construction Season

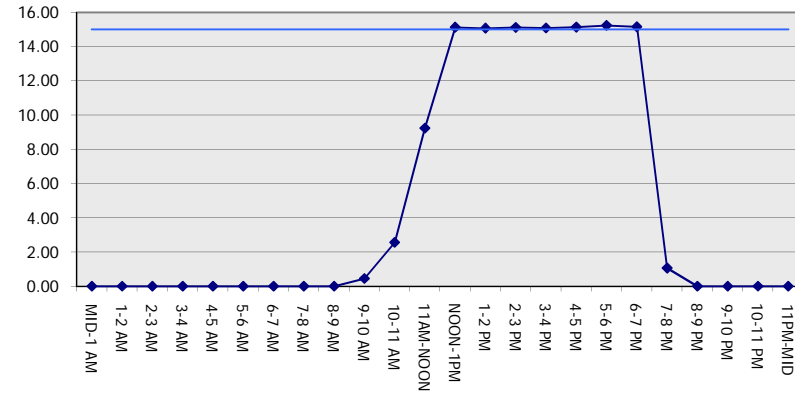
**GRAPHICAL REPRESENTATION OF TRAFFIC MODEL INPUT AND OUTPUT**

**SUNDAY SOUTHBOUND DIRECTION**

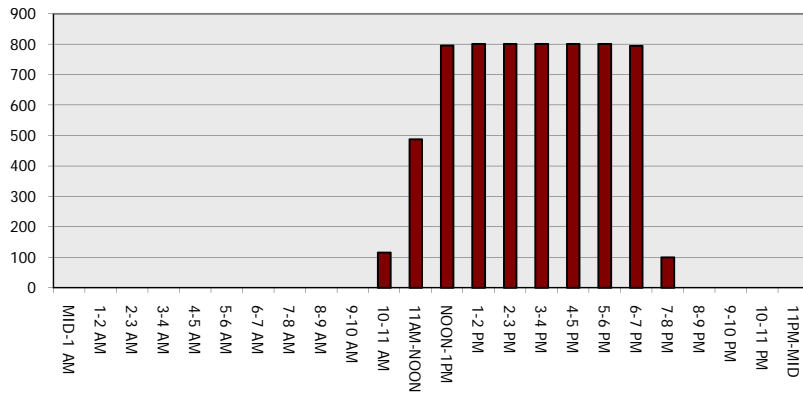
**Main Route - Traffic Demand (Vehicles Per Hour)**



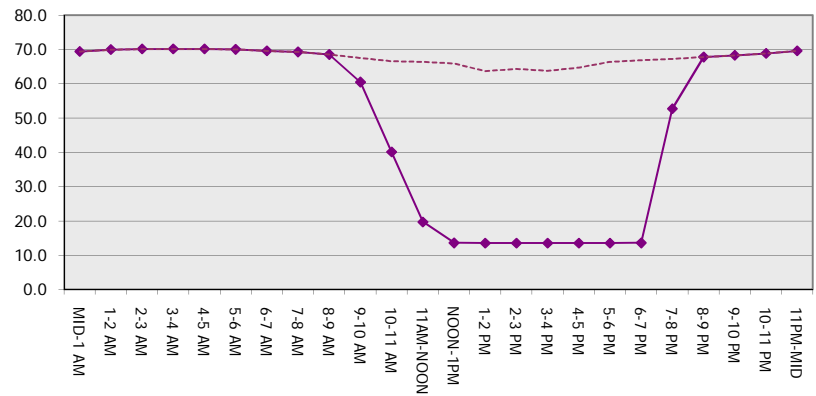
**Main Route Average Delay Per Vehicle (Minutes)**



**Main Route - Average Queue Length (Vehicles)**



**Main Route - Average Speed (MPH)**



<b>IH 43/894: HALE INTERCHANGE TO STH 27 (MILWAUKEE COUNTY)</b> <b>OFF-PEAK DAY CLOSURE</b> <b>NO DIVERSION ROUTE (MAX QUEUE METHOD)</b>	<b>AUGUST</b>
	Analyzed for 2009 Construction Season

**SUMMARY OF TRAFFIC MODEL OUTPUT**

SUNDAY NORTHBOUND DIRECTION

TIME OF DAY	FLOWS AND CAPACITY IN VEH/HR						AVERAGE SPEEDS IN MPH			
	MAIN ROUTE		SITE CAPA CITY	FLOW		AV.DEL PER VEH (MINS)	AVERAGE QUEUE (VEH)	MAIN ROUTE		SITE
	DEMAND FLOW	PCT HEAVY		MAIN ROUTE	'DIVER TED'			WITHOUT WORK ZONE	WITH WORK ZONE	
MID-1 AM	953	0.0	OFF	953	0	0.00	0	69.6	69.6	69.6
1-2 AM	566	0.0	OFF	566	0	0.00	0	70.0	70.0	70.0
2-3 AM	453	0.0	OFF	453	0	0.00	0	70.2	70.2	70.2
3-4 AM	327	0.0	OFF	327	0	0.00	0	70.2	70.2	70.2
4-5 AM	428	0.0	OFF	428	0	0.00	0	70.2	70.2	70.2
5-6 AM	719	0.0	OFF	719	0	0.00	0	69.9	69.9	69.9
6-7 AM	904	0.0	OFF	904	0	0.00	0	69.6	69.6	69.6
7-8 AM	1127	0.0	OFF	1127	0	0.00	0	69.3	69.3	69.3
8-9 AM	1583	0.0	OFF	1583	0	0.00	0	68.7	68.7	68.7
9-10 AM	2411	0.0	2999	2411	0	0.40	0	67.8	61.4	47.2
10-11 AM	3041	0.0	2999	3041	0	1.09	24	66.9	52.2	38.2
11AM-NOON	3671	0.0	3000	3671	0	6.99	396	65.8	23.7	37.3
NOON-1PM	4247	0.0	2999	3002	1245	14.95+	801	61.9	13.5	37.3
1-2 PM	4333	0.0	3000	3002	1330	14.91+	801	61.2	13.5	37.3
2-3 PM	4595	0.0	3000	3001	1594	14.79+	801	59.5	13.5	37.3
3-4 PM	4544	0.0	3000	3002	1542	14.81+	801	59.8	13.5	37.3
4-5 PM	4517	0.0	3000	3002	1515	14.82+	801	60.0	13.5	37.3
5-6 PM	4433	0.0	3000	3002	1431	14.86+	801	60.5	13.5	37.3
6-7 PM	3867	0.0	3000	3000	867	15.11+	801	64.5	13.5	37.3
7-8 PM	3217	0.0	OFF	3217	0	1.29	109	66.8	50.1	50.1
8-9 PM	2817	0.0	OFF	2817	0	0.00	0	67.3	67.3	67.3
9-10 PM	2171	0.0	OFF	2171	0	0.00	0	68.1	68.1	68.1
10-11 PM	1445	0.0	OFF	1445	0	0.00	0	68.9	68.9	68.9
11PM-MID	999	0.0	OFF	999	0	0.00	0	69.5	69.5	69.5

"OFF" INDICATES NO ROAD WORK (ALL LANES OPEN TO TRAFFIC)

+ INDICATES QUEUEING EXCEEDS USER-SPECIFIED MAXIMUM LIMIT

*----- SITE BREAKDOWN DELAYS -----*	
BREAKDOWN DURATION (MINS)	0
RANGE OF QUEUE DELAY - MIN	0.0
(VEH-H) MAX	0.0
AV BREAKDOWNS PER DAY	0.00
AV QUEUE DELAY/DAY (VEH-H)	0.0
AV TOTAL DELAY/DAY (VEH-H)	0.0

*----- SITE ACCIDENT DELAYS -----*	
BREAKDOWN DURATION (MINS)	0
RANGE OF QUEUE DELAY - MIN	0
(VEH-H) MAX	0
AV BREAKDOWNS PER DAY	0
AV QUEUE DELAY/DAY (VEH-H)	0
AV TOTAL DELAY/DAY (VEH-H)	0

AVERAGE ACCIDENT NUMBERS (PIA/DAY)	
MAIN ROUTE WITHOUT WORKS	0.0393
MAIN ROUTE WITH WORKS	0.0307
'DIVERSION'	0.0151

PIA: Personal Injury Accidents

ECONOMIC IMPACT ON ROAD USERS	
ROAD USER COSTS PER DAY	\$133,861
CONGESTED HOURS PER DAY*	7

\*Delays Exceeding User-Specified Maximum

**IH 43/894: HALE INTERCHANGE TO STH 27 (MILWAUKEE COUNTY)**  
**OFF-PEAK DAY CLOSURE**  
**NO DIVERSION ROUTE (MAX QUEUE METHOD)**

**AUGUST**

Analyzed for 2009  
 Construction Season

**GRAPHICAL REPRESENTATION OF TRAFFIC MODEL INPUT AND OUTPUT**  
**SUNDAY NORTHBOUND DIRECTION**

