

IH 43/894: HALE INTERCHANGE TO STH 27 (MILWAUKEE COUNTY) OFF-PEAK DAY 2 LANE CLOSURE NO DIVERSION ROUTE (MAX QUEUE METHOD)	AUGUST
	Analyzed for 2009 Construction Season

SUMMARY OF TRAFFIC MODEL OUTPUT

MON-THUR SOUTHBOUND DIRECTION

TIME OF DAY	FLOWS AND CAPACITY IN VEH/HR						AVERAGE SPEEDS IN MPH				
	MAIN ROUTE		SITE CAPA CITY	FLOW		AV.DEL PER VEH (MINS)	AVERAGE QUEUE (VEH)	MAIN ROUTE		SITE	
	DEMAND FLOW	PCT HEAVY		MAIN ROUTE	'DIVER TED'			WITHOUT WORK ZONE	WITH WORK ZONE		
MID-1 AM	768	0.0	OFF	768	0	0.00	0	69.8	69.8	69.8	
1-2 AM	497	0.0	OFF	497	0	0.00	0	70.1	70.1	70.1	
2-3 AM	413	0.0	OFF	413	0	0.00	0	70.2	70.2	70.2	
3-4 AM	485	0.0	OFF	485	0	0.00	0	70.1	70.1	70.1	
4-5 AM	899	0.0	OFF	899	0	0.00	0	69.6	69.6	69.6	
5-6 AM	2409	0.0	OFF	2409	0	0.00	0	67.8	67.8	67.8	
6-7 AM	4307	0.0	OFF	4307	0	0.00	0	61.4	61.4	61.4	
7-8 AM	4586	0.0	OFF	4586	0	0.00	0	59.6	59.6	59.6	
8-9 AM	3846	0.0	OFF	3846	0	0.00	0	64.6	64.6	64.6	
9-10 AM	3594	0.0	OFF	3594	0	0.00	0	66.3	66.3	66.3	
10-11 AM	3704	0.0	1499	1550	2154	16.39+	412	65.6	12.7	36.6	
11AM-NOON	3793	0.0	1499	1693	2101	14.41+	378	65.0	14.0	35.8	
NOON-1PM	3827	0.0	1499	1500	2327	15.79+	399	64.7	13.0	37.6	
1-2 PM	4103	0.0	1500	1500	2603	15.67+	400	62.8	13.0	37.6	
2-3 PM	4663	0.0	1500	1500	3163	15.41+	400	59.0	13.0	37.6	
3-4 PM	5146	0.0	OFF	5146	0	0.49	34	55.7	50.4	50.4	
4-5 PM	5306	0.0	OFF	5306	0	0.00	0	54.6	54.6	54.6	
5-6 PM	5114	0.0	OFF	5114	0	0.00	0	55.9	55.9	55.9	
6-7 PM	4012	0.0	OFF	4012	0	0.00	0	63.5	63.5	63.5	
7-8 PM	2904	0.0	OFF	2904	0	0.00	0	67.1	67.1	67.1	
8-9 PM	2386	0.0	OFF	2386	0	0.00	0	67.8	67.8	67.8	
9-10 PM	2185	0.0	OFF	2185	0	0.00	0	68.0	68.0	68.0	
10-11 PM	1721	0.0	OFF	1721	0	0.00	0	68.6	68.6	68.6	
11PM-MID	1228	0.0	OFF	1228	0	0.00	0	69.2	69.2	69.2	

"OFF" INDICATES NO ROAD WORK (ALL LANES OPEN TO TRAFFIC)

+ INDICATES QUEUEING EXCEEDS USER-SPECIFIED MAXIMUM LIMIT

----- SITE BREAKDOWN DELAYS -----	
BREAKDOWN DURATION (MINS)	0
RANGE OF QUEUE DELAY - MIN (VEH-H) MAX	0.0
AV BREAKDOWNS PER DAY	0.00
AV QUEUE DELAY/DAY (VEH-H)	0.0
AV TOTAL DELAY/DAY (VEH-H)	0.0

----- SITE ACCIDENT DELAYS -----	
BREAKDOWN DURATION (MINS)	0
RANGE OF QUEUE DELAY - MIN (VEH-H) MAX	0
AV BREAKDOWNS PER DAY	0
AV QUEUE DELAY/DAY (VEH-H)	0
AV TOTAL DELAY/DAY (VEH-H)	0

AVERAGE ACCIDENT NUMBERS (PIA/DAY)	
MAIN ROUTE WITHOUT WORKS	0.0492
MAIN ROUTE WITH WORKS	0.0402
'DIVERSION'	0.0196
PIA: Personal Injury Accidents	
IMPACTS ON ROAD USERS	
ROAD USER COSTS PER DAY	\$68,144
CONGESTED HOURS PER DAY*	5

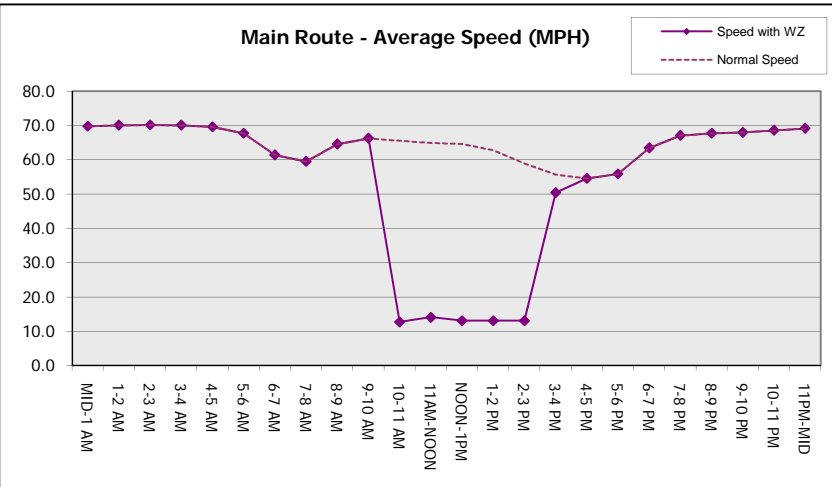
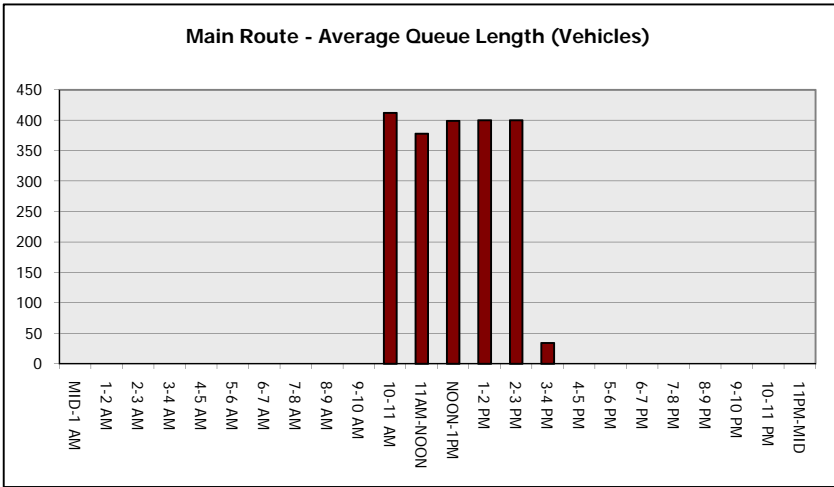
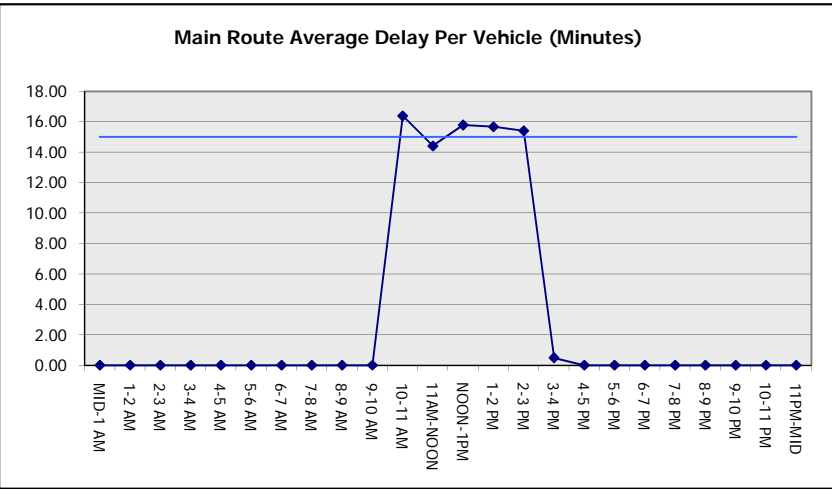
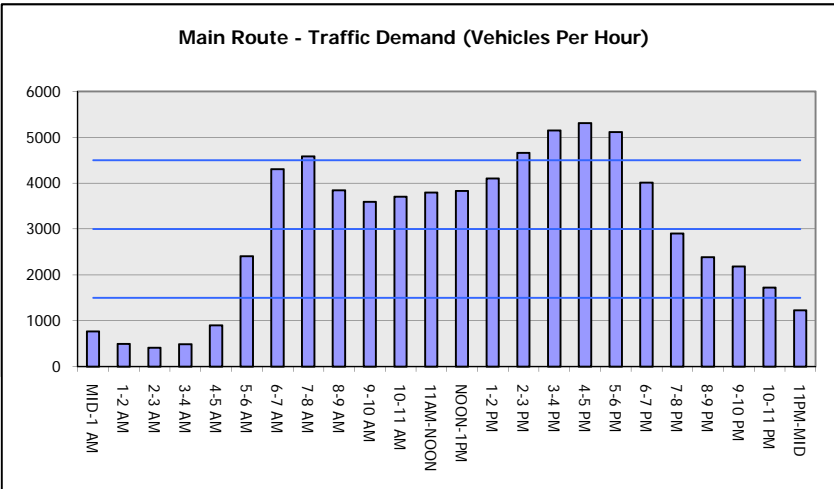
*Delays Exceeding User-Specified Maximum

IH 43/894: HALE INTERCHANGE TO STH 27 (MILWAUKEE COUNTY)
OFF-PEAK DAY 2 LANE CLOSURE
NO DIVERSION ROUTE (MAX QUEUE METHOD)

AUGUST
 Analyzed for 2009
 Construction Season

GRAPHICAL REPRESENTATION OF TRAFFIC MODEL INPUT AND OUTPUT

MON-THUR SOUTHBOUND DIRECTION



IH 43/894: HALE INTERCHANGE TO STH 27 (MILWAUKEE COUNTY) OFF-PEAK DAY 2 LANE CLOSURE NO DIVERSION ROUTE (MAX QUEUE METHOD)	AUGUST
	Analyzed for 2009 Construction Season

SUMMARY OF TRAFFIC MODEL OUTPUT

MON-THUR NORTHBOUND DIRECTION

TIME OF DAY	FLOWS AND CAPACITY IN VEH/HR						AVERAGE SPEEDS IN MPH			
	MAIN ROUTE		SITE CAPA CITY	FLOW		AV.DEL PER VEH (MINS)	AVERAGE QUEUE (VEH)	MAIN ROUTE		SITE
	DEMAND FLOW	PCT HEAVY		MAIN ROUTE	'DIVER TED'			WITHOUT WORK ZONE	WITH WORK ZONE	
MID-1 AM	611	0.0	OFF	611	0	0.00	0	70.0	70.0	70.0
1-2 AM	397	0.0	OFF	397	0	0.00	0	70.2	70.2	70.2
2-3 AM	370	0.0	OFF	370	0	0.00	0	70.2	70.2	70.2
3-4 AM	515	0.0	OFF	515	0	0.00	0	70.1	70.1	70.1
4-5 AM	1106	0.0	OFF	1106	0	0.00	0	69.4	69.4	69.4
5-6 AM	2661	0.0	OFF	2661	0	0.00	0	67.4	67.4	67.4
6-7 AM	4662	0.0	OFF	4662	0	0.00	0	59.0	59.0	59.0
7-8 AM	5458	0.0	OFF	5458	0	0.00	0	53.6	53.6	53.6
8-9 AM	4558	0.0	OFF	4558	0	0.00	0	59.7	59.7	59.7
9-10 AM	3691	0.0	OFF	3691	0	0.00	0	65.6	65.6	65.6
10-11 AM	3502	0.0	1499	1550	1952	16.44+	412	66.4	12.7	36.6
11AM-NOON	3605	0.0	1499	1667	1938	14.44+	378	66.2	14.0	35.8
NOON-1PM	3832	0.0	1499	1536	2297	15.75+	397	64.6	13.0	36.3
1-2 PM	4037	0.0	1500	1500	2537	15.74+	400	63.3	13.0	36.8
2-3 PM	4522	0.0	1500	1500	3022	15.51+	400	60.0	13.0	36.8
3-4 PM	4952	0.0	OFF	4952	0	0.45	30	57.0	51.9	51.9
4-5 PM	5267	0.0	OFF	5267	0	0.00	0	54.9	54.9	54.9
5-6 PM	5413	0.0	OFF	5413	0	0.00	0	53.9	53.9	53.9
6-7 PM	4236	0.0	OFF	4236	0	0.00	0	61.9	61.9	61.9
7-8 PM	3123	0.0	OFF	3123	0	0.00	0	66.9	66.9	66.9
8-9 PM	2774	0.0	OFF	2774	0	0.00	0	67.3	67.3	67.3
9-10 PM	2365	0.0	OFF	2365	0	0.00	0	67.8	67.8	67.8
10-11 PM	1631	0.0	OFF	1631	0	0.00	0	68.7	68.7	68.7
11PM-MID	1183	0.0	OFF	1183	0	0.00	0	69.2	69.2	69.2

"OFF" INDICATES NO ROAD WORK (ALL LANES OPEN TO TRAFFIC)

+ INDICATES QUEUEING EXCEEDS USER-SPECIFIED MAXIMUM LIMIT

----- SITE BREAKDOWN DELAYS -----	
BREAKDOWN DURATION (MINS)	0
RANGE OF QUEUE DELAY - MIN (VEH-H) MAX	0.0
AV BREAKDOWNS PER DAY	0.00
AV QUEUE DELAY/DAY (VEH-H)	0.0
AV TOTAL DELAY/DAY (VEH-H)	0.0

----- SITE ACCIDENT DELAYS -----	
BREAKDOWN DURATION (MINS)	0
RANGE OF QUEUE DELAY - MIN (VEH-H) MAX	0
AV BREAKDOWNS PER DAY	0
AV QUEUE DELAY/DAY (VEH-H)	0
AV TOTAL DELAY/DAY (VEH-H)	0

AVERAGE ACCIDENT NUMBERS (PIA/DAY)	
MAIN ROUTE WITHOUT WORKS	0.0510
MAIN ROUTE WITH WORKS	0.0424
'DIVERSION'	0.0186

PIA: Personal Injury Accidents

ECONOMIC IMPACT ON ROAD USERS	
ROAD USER COSTS PER DAY	\$66,285
CONGESTED HOURS PER DAY*	5

*Delays Exceeding User-Specified Maximum

IH 43/894: HALE INTERCHANGE TO STH 27 (MILWAUKEE COUNTY)
OFF-PEAK DAY 2 LANE CLOSURE
NO DIVERSION ROUTE (MAX QUEUE METHOD)

AUGUST

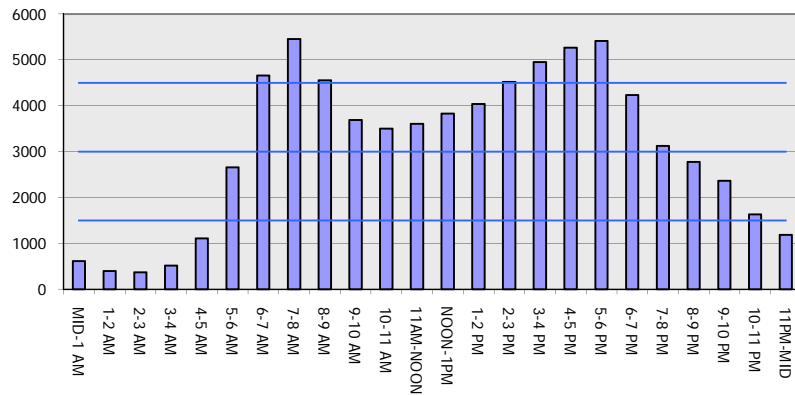
Analyzed for 2009
 Construction Season

GRAPHICAL REPRESENTATION OF TRAFFIC MODEL INPUT AND OUTPUT

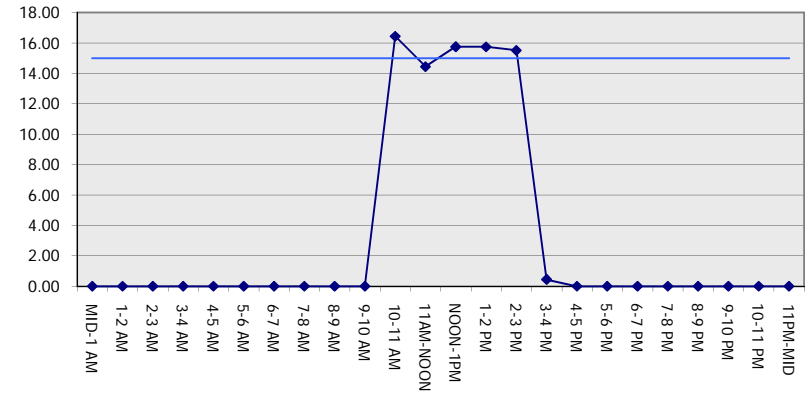
MON-THUR

NORTHBOUND DIRECTION

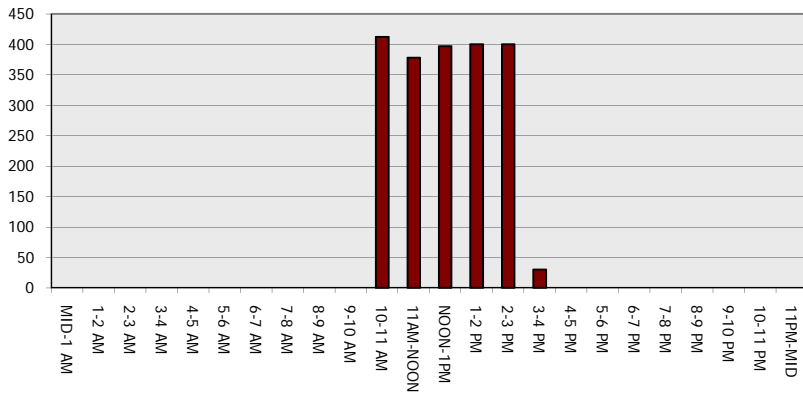
Main Route - Traffic Demand (Vehicles Per Hour)



Main Route Average Delay Per Vehicle (Minutes)



Main Route - Average Queue Length (Vehicles)



Main Route - Average Speed (MPH)

