

IH 43/894: HALE INTERCHANGE TO STH 27 (MILWAUKEE COUNTY) OFF-PEAK DAY 2 LANE CLOSURE NO DIVERSION ROUTE (MAX QUEUE METHOD)	AUGUST
	Analyzed for 2009 Construction Season

SUMMARY OF TRAFFIC MODEL OUTPUT

FRIDAY SOUTHBOUND DIRECTION

TIME OF DAY	FLOWS AND CAPACITY IN VEH/HR						AVERAGE SPEEDS IN MPH				
	MAIN ROUTE		SITE CAPA CITY	FLOW		AV.DEL PER VEH (MINS)	AVERAGE QUEUE (VEH)	MAIN ROUTE		SITE	
	DEMAND FLOW	PCT HEAVY		MAIN ROUTE	'DIVER TED'			WITHOUT WORK ZONE	WITH WORK ZONE		
MID-1 AM	1006	0.0	OFF	1006	0	0.00	0	69.5	69.5	69.5	
1-2 AM	668	0.0	OFF	668	0	0.00	0	69.9	69.9	69.9	
2-3 AM	575	0.0	OFF	575	0	0.00	0	70.0	70.0	70.0	
3-4 AM	579	0.0	OFF	579	0	0.00	0	70.0	70.0	70.0	
4-5 AM	956	0.0	OFF	956	0	0.00	0	69.6	69.6	69.6	
5-6 AM	2410	0.0	OFF	2410	0	0.00	0	67.8	67.8	67.8	
6-7 AM	4197	0.0	OFF	4197	0	0.00	0	62.2	62.2	62.2	
7-8 AM	4571	0.0	OFF	4571	0	0.00	0	59.6	59.6	59.6	
8-9 AM	4050	0.0	OFF	4050	0	0.00	0	63.2	63.2	63.2	
9-10 AM	3977	0.0	OFF	3977	0	0.00	0	63.7	63.7	63.7	
10-11 AM	4353	0.0	1499	1550	2803	16.10+	412	61.1	12.7	36.6	
11AM-NOON	4423	0.0	1499	1786	2637	14.34+	379	60.6	13.8	35.5	
NOON-1PM	4668	0.0	1499	1500	3168	15.75+	399	58.9	12.8	30.8	
1-2 PM	4703	0.0	1500	1500	3203	15.73+	400	58.7	12.8	30.8	
2-3 PM	4828	0.0	1500	1500	3328	15.67+	400	57.9	12.8	30.8	
3-4 PM	5107	0.0	OFF	5107	0	0.83	63	56.0	47.4	47.4	
4-5 PM	5328	0.0	OFF	5328	0	0.00	0	54.5	54.5	54.5	
5-6 PM	5115	0.0	OFF	5115	0	0.00	0	55.9	55.9	55.9	
6-7 PM	4553	0.0	OFF	4553	0	0.00	0	59.7	59.7	59.7	
7-8 PM	3578	0.0	OFF	3578	0	0.00	0	66.3	66.3	66.3	
8-9 PM	2812	0.0	OFF	2812	0	0.00	0	67.3	67.3	67.3	
9-10 PM	2595	0.0	OFF	2595	0	0.00	0	67.5	67.5	67.5	
10-11 PM	1994	0.0	OFF	1994	0	0.00	0	68.2	68.2	68.2	
11PM-MID	1526	0.0	OFF	1526	0	0.00	0	68.8	68.8	68.8	

"OFF" INDICATES NO ROAD WORK (ALL LANES OPEN TO TRAFFIC)

+ INDICATES QUEUEING EXCEEDS USER-SPECIFIED MAXIMUM LIMIT

----- SITE BREAKDOWN DELAYS -----	
BREAKDOWN DURATION (MINS)	0
RANGE OF QUEUE DELAY - MIN (VEH-H) MAX	0.0
AV BREAKDOWNS PER DAY	0.00
AV QUEUE DELAY/DAY (VEH-H)	0.0
AV TOTAL DELAY/DAY (VEH-H)	0.0

----- SITE ACCIDENT DELAYS -----	
BREAKDOWN DURATION (MINS)	0
RANGE OF QUEUE DELAY - MIN (VEH-H) MAX	0
AV BREAKDOWNS PER DAY	0
AV QUEUE DELAY/DAY (VEH-H)	0
AV TOTAL DELAY/DAY (VEH-H)	0

AVERAGE ACCIDENT NUMBERS (PIA/DAY)	
MAIN ROUTE WITHOUT WORKS	0.0538
MAIN ROUTE WITH WORKS	0.0429
'DIVERSION'	0.0240
PIA: Personal Injury Accidents	
IMPACTS ON ROAD USERS	
ROAD USER COSTS PER DAY	\$79,990
CONGESTED HOURS PER DAY*	5

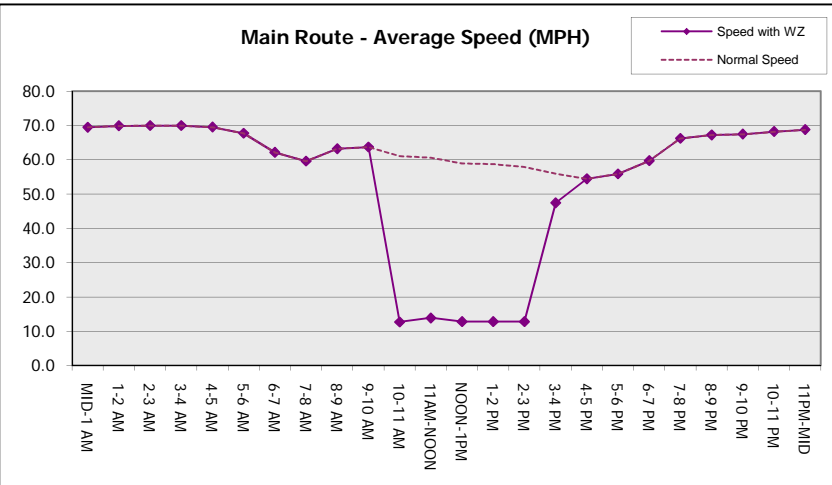
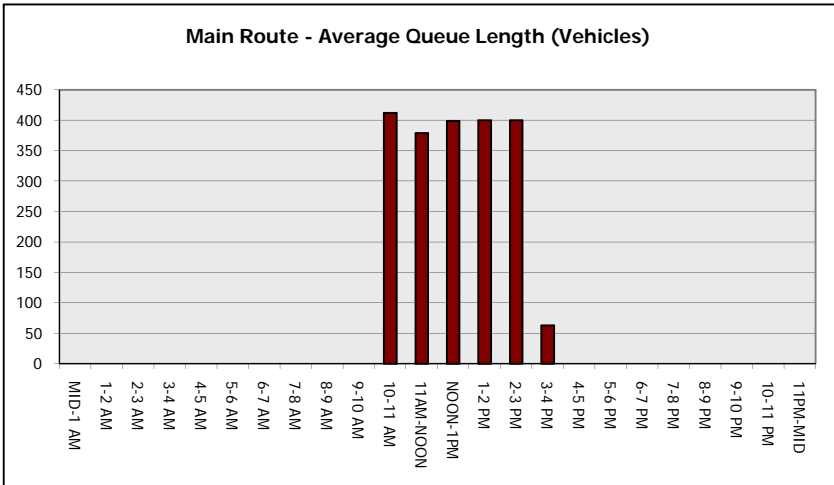
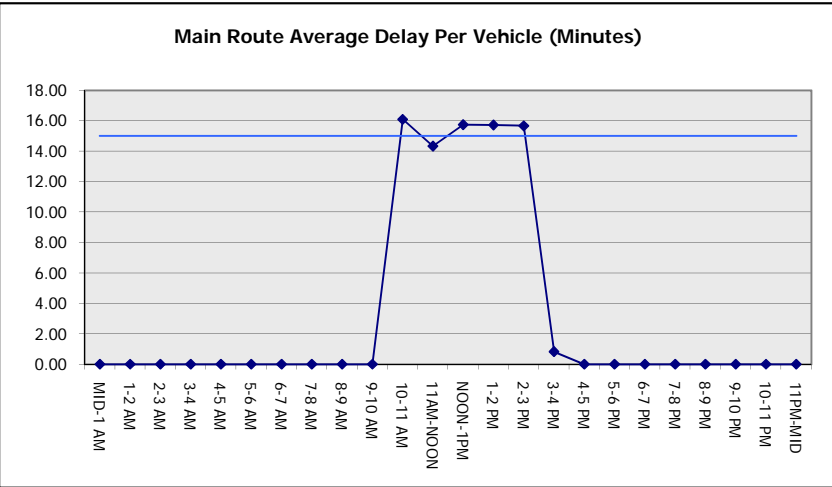
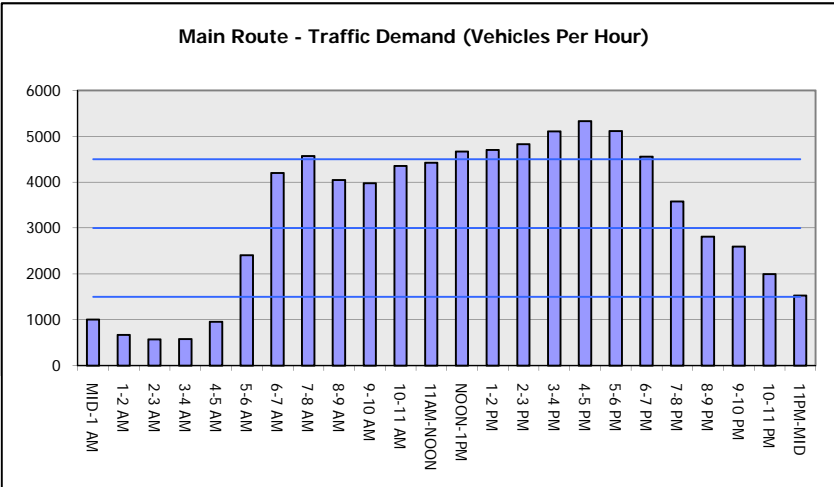
*Delays Exceeding User-Specified Maximum

IH 43/894: HALE INTERCHANGE TO STH 27 (MILWAUKEE COUNTY)
OFF-PEAK DAY 2 LANE CLOSURE
NO DIVERSION ROUTE (MAX QUEUE METHOD)

AUGUST
 Analyzed for 2009
 Construction Season

GRAPHICAL REPRESENTATION OF TRAFFIC MODEL INPUT AND OUTPUT

FRIDAY SOUTHBOUND DIRECTION



IH 43/894: HALE INTERCHANGE TO STH 27 (MILWAUKEE COUNTY) OFF-PEAK DAY 2 LANE CLOSURE NO DIVERSION ROUTE (MAX QUEUE METHOD)	AUGUST
	Analyzed for 2009 Construction Season

SUMMARY OF TRAFFIC MODEL OUTPUT

FRIDAY NORTHBOUND DIRECTION

TIME OF DAY	FLOWS AND CAPACITY IN VEH/HR						AVERAGE SPEEDS IN MPH			
	MAIN ROUTE		SITE CAPA CITY	FLOW		AV.DEL PER VEH (MINS)	AVERAGE QUEUE (VEH)	MAIN ROUTE		SITE
	DEMAND FLOW	PCT HEAVY		MAIN ROUTE	'DIVER TED'			WITHOUT WORK ZONE	WITH WORK ZONE	
MID-1 AM	697	0.0	OFF	697	0	0.00	0	69.9	69.9	69.9
1-2 AM	466	0.0	OFF	466	0	0.00	0	70.2	70.2	70.2
2-3 AM	447	0.0	OFF	447	0	0.00	0	70.2	70.2	70.2
3-4 AM	550	0.0	OFF	550	0	0.00	0	70.0	70.0	70.0
4-5 AM	1098	0.0	OFF	1098	0	0.00	0	69.4	69.4	69.4
5-6 AM	2442	0.0	OFF	2442	0	0.00	0	67.7	67.7	67.7
6-7 AM	4157	0.0	OFF	4157	0	0.00	0	62.5	62.5	62.5
7-8 AM	5075	0.0	OFF	5075	0	0.00	0	56.2	56.2	56.2
8-9 AM	4202	0.0	OFF	4202	0	0.00	0	62.2	62.2	62.2
9-10 AM	3727	0.0	OFF	3727	0	0.00	0	65.4	65.4	65.4
10-11 AM	3751	0.0	1499	1550	2201	16.37+	412	65.2	12.7	36.6
11AM-NOON	3980	0.0	1499	1717	2263	14.39+	378	63.7	14.0	35.7
NOON-1PM	4357	0.0	1499	1500	2858	15.64+	399	61.1	13.0	35.6
1-2 PM	4418	0.0	1500	1500	2918	15.61+	400	60.7	13.0	35.6
2-3 PM	4937	0.0	1500	1500	3437	15.35+	400	57.1	13.0	35.6
3-4 PM	5244	0.0	OFF	5244	0	0.63	47	55.0	48.5	48.5
4-5 PM	5388	0.0	OFF	5388	0	0.00	0	54.0	54.0	54.0
5-6 PM	5328	0.0	OFF	5328	0	0.00	0	54.5	54.5	54.5
6-7 PM	4383	0.0	OFF	4383	0	0.00	0	60.9	60.9	60.9
7-8 PM	3365	0.0	OFF	3365	0	0.00	0	66.6	66.6	66.6
8-9 PM	2880	0.0	OFF	2880	0	0.00	0	67.1	67.1	67.1
9-10 PM	2668	0.0	OFF	2668	0	0.00	0	67.4	67.4	67.4
10-11 PM	2031	0.0	OFF	2031	0	0.00	0	68.2	68.2	68.2
11PM-MID	1594	0.0	OFF	1594	0	0.00	0	68.7	68.7	68.7

"OFF" INDICATES NO ROAD WORK (ALL LANES OPEN TO TRAFFIC)

+ INDICATES QUEUEING EXCEEDS USER-SPECIFIED MAXIMUM LIMIT

----- SITE BREAKDOWN DELAYS -----	
BREAKDOWN DURATION (MINS)	0
RANGE OF QUEUE DELAY - MIN	0.0
(VEH-H) MAX	0.0
AV BREAKDOWNS PER DAY	0.00
AV QUEUE DELAY/DAY (VEH-H)	0.0
AV TOTAL DELAY/DAY (VEH-H)	0.0

----- SITE ACCIDENT DELAYS -----	
BREAKDOWN DURATION (MINS)	0
RANGE OF QUEUE DELAY - MIN	0
(VEH-H) MAX	0
AV BREAKDOWNS PER DAY	0
AV QUEUE DELAY/DAY (VEH-H)	0
AV TOTAL DELAY/DAY (VEH-H)	0

AVERAGE ACCIDENT NUMBERS (PIA/DAY)	
MAIN ROUTE WITHOUT WORKS	0.0528
MAIN ROUTE WITH WORKS	0.0429
'DIVERSION'	0.0217

PIA: Personal Injury Accidents

ECONOMIC IMPACT ON ROAD USERS	
ROAD USER COSTS PER DAY	\$74,221
CONGESTED HOURS PER DAY*	5

*Delays Exceeding User-Specified Maximum

IH 43/894: HALE INTERCHANGE TO STH 27 (MILWAUKEE COUNTY)
OFF-PEAK DAY 2 LANE CLOSURE
NO DIVERSION ROUTE (MAX QUEUE METHOD)

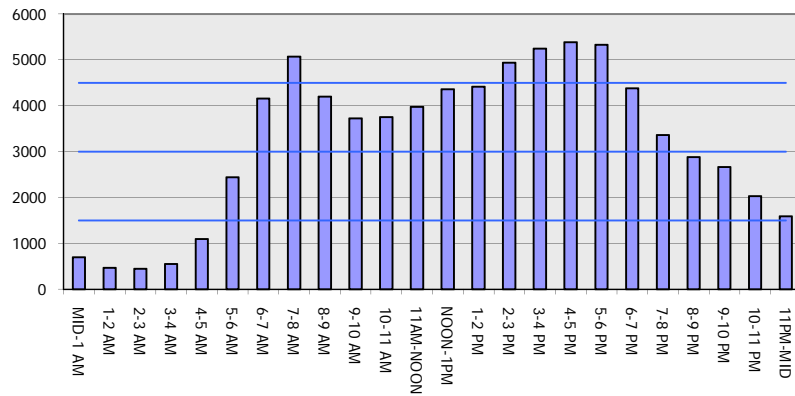
AUGUST

Analyzed for 2009
 Construction Season

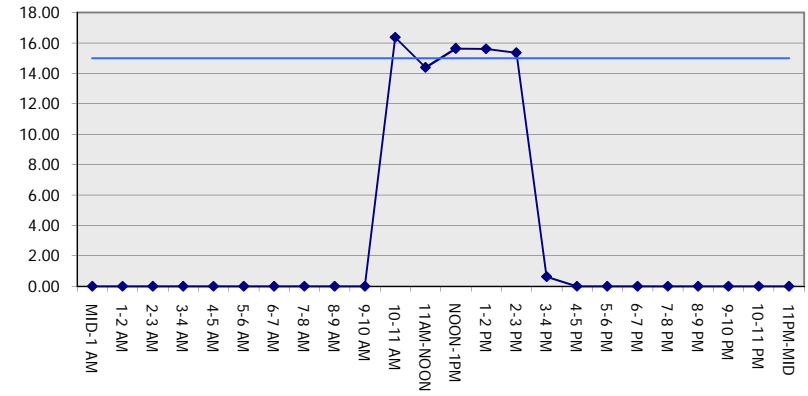
GRAPHICAL REPRESENTATION OF TRAFFIC MODEL INPUT AND OUTPUT

FRIDAY NORTHBOUND DIRECTION

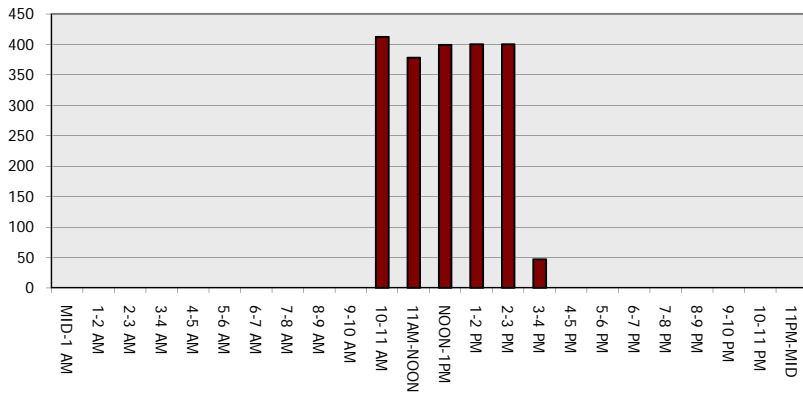
Main Route - Traffic Demand (Vehicles Per Hour)



Main Route Average Delay Per Vehicle (Minutes)



Main Route - Average Queue Length (Vehicles)



Main Route - Average Speed (MPH)

