

IH 94: CTH Y/LAYTON AVE TO CTH ZZ/COLLEGE AVE (MILWAUKEE COUNTY) OFF-PEAK DAY CLOSURE NO DIVERSION ROUTE (MAX QUEUE METHOD)	OCTOBER
	Analyzed for 2009 Construction Season

SUMMARY OF TRAFFIC MODEL OUTPUT

SUNDAY WESTBOUND DIRECTION

TIME OF DAY	FLOWS AND CAPACITY IN VEH/HR						AVERAGE SPEEDS IN MPH			
	MAIN ROUTE		SITE CAPA CITY	FLOW		AV.DEL PER VEH (MINS)	AVERAGE QUEUE (VEH)	MAIN ROUTE		SITE
	DEMAND FLOW	PCT HEAVY		MAIN ROUTE	'DIVER TED'			WITHOUT WORK ZONE	WITH WORK ZONE	
MID-1 AM	1339	0.0	OFF	1339	0	0.00	0	70.2	70.2	70.2
1-2 AM	736	0.0	OFF	736	0	0.00	0	70.2	70.2	70.2
2-3 AM	617	0.0	OFF	617	0	0.00	0	70.2	70.2	70.2
3-4 AM	411	0.0	OFF	411	0	0.00	0	70.2	70.2	70.2
4-5 AM	444	0.0	OFF	444	0	0.00	0	70.2	70.2	70.2
5-6 AM	651	0.0	OFF	651	0	0.00	0	70.2	70.2	70.2
6-7 AM	1160	0.0	OFF	1160	0	0.00	0	70.2	70.2	70.2
7-8 AM	1482	0.0	OFF	1482	0	0.00	0	70.2	70.2	70.2
8-9 AM	2066	0.0	OFF	2066	0	0.00	0	69.5	69.5	69.5
9-10 AM	2835	0.0	2999	2835	0	0.71	4	68.5	48.8	40.1
10-11 AM	3672	0.0	3000	3672	0	5.32	308	67.1	18.4	36.9
11AM-NOON	4276	0.0	2999	3235	1042	16.81+	897	63.0	10.1	36.9
NOON-1PM	4629	0.0	3000	3034	1596	17.60+	947	60.5	9.9	36.9
1-2 PM	4652	0.0	3000	2996	1656	17.73+	955	60.4	9.9	36.9
2-3 PM	4606	0.0	3000	2999	1607	17.64+	949	60.7	9.9	36.9
3-4 PM	4895	0.0	2999	3000	1895	17.74+	961	58.7	9.9	36.9
4-5 PM	4872	0.0	2999	3000	1872	17.75+	961	58.9	9.9	36.9
5-6 PM	4769	0.0	3000	3007	1762	17.76+	959	59.6	9.9	36.9
6-7 PM	4268	0.0	3000	2935	1333	17.19+	917	63.0	10.0	36.9
7-8 PM	3651	0.0	OFF	3651	0	1.88	170	67.2	32.7	32.7
8-9 PM	2836	0.0	OFF	2836	0	0.00	0	68.5	68.5	68.5
9-10 PM	2564	0.0	OFF	2564	0	0.00	0	68.9	68.9	68.9
10-11 PM	1886	0.0	OFF	1886	0	0.00	0	69.7	69.7	69.7
11PM-MID	1344	0.0	OFF	1344	0	0.00	0	70.2	70.2	70.2

"OFF" INDICATES NO ROAD WORK (ALL LANES OPEN TO TRAFFIC)

+ INDICATES QUEUEING EXCEEDS USER-SPECIFIED MAXIMUM LIMIT

----- SITE BREAKDOWN DELAYS -----	
BREAKDOWN DURATION (MINS)	0
RANGE OF QUEUE DELAY - MIN (VEH-H) MAX	0.0
AV BREAKDOWNS PER DAY	0.00
AV QUEUE DELAY/DAY (VEH-H)	0.0
AV TOTAL DELAY/DAY (VEH-H)	0.0

----- SITE ACCIDENT DELAYS -----	
BREAKDOWN DURATION (MINS)	0
RANGE OF QUEUE DELAY - MIN (VEH-H) MAX	0
AV BREAKDOWNS PER DAY	0
AV QUEUE DELAY/DAY (VEH-H)	0
AV TOTAL DELAY/DAY (VEH-H)	0

AVERAGE ACCIDENT NUMBERS (PIA/DAY)	
MAIN ROUTE WITHOUT WORKS	0.0206
MAIN ROUTE WITH WORKS	0.0145
'DIVERSION'	0.0094
PIA: Personal Injury Accidents	
IMPACTS ON ROAD USERS	
ROAD USER COSTS PER DAY	\$186,272
CONGESTED HOURS PER DAY*	8

*Delays Exceeding User-Specified Maximum

IH 94: CTH Y/LAYTON AVE TO CTH ZZ/COLLEGE AVE (MILWAUKEE COUNTY)
OFF-PEAK DAY CLOSURE
NO DIVERSION ROUTE (MAX QUEUE METHOD)

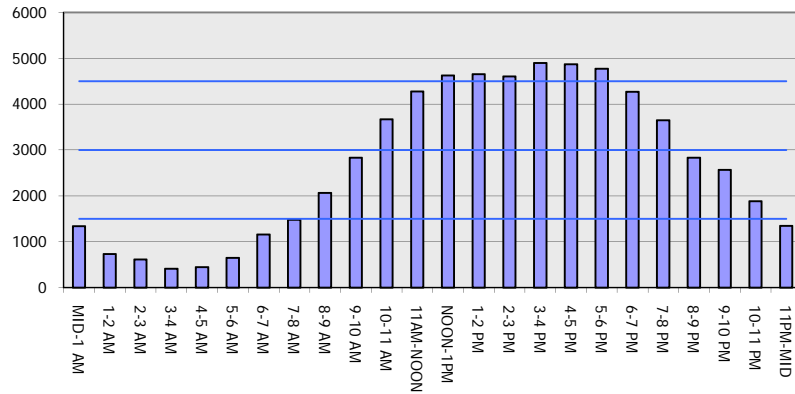
OCTOBER

Analyzed for 2009
 Construction Season

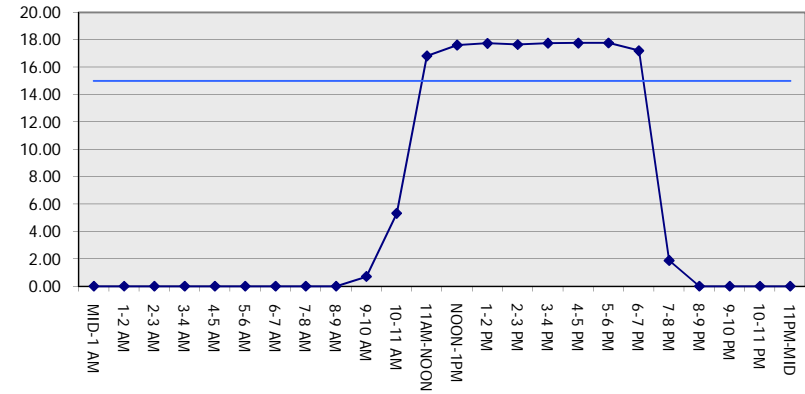
GRAPHICAL REPRESENTATION OF TRAFFIC MODEL INPUT AND OUTPUT

SUNDAY WESTBOUND DIRECTION

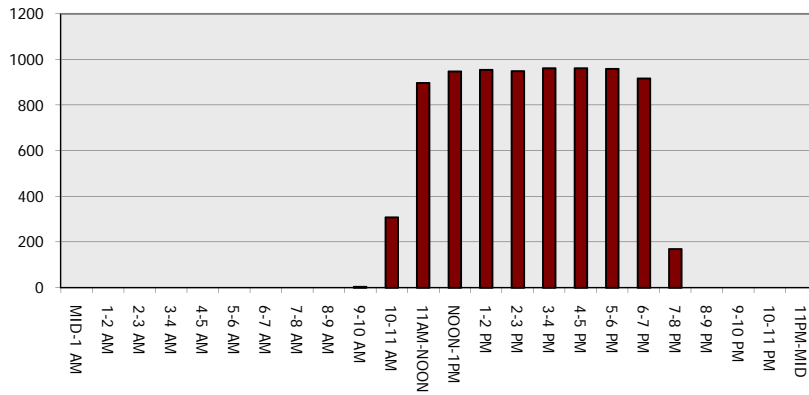
Main Route - Traffic Demand (Vehicles Per Hour)



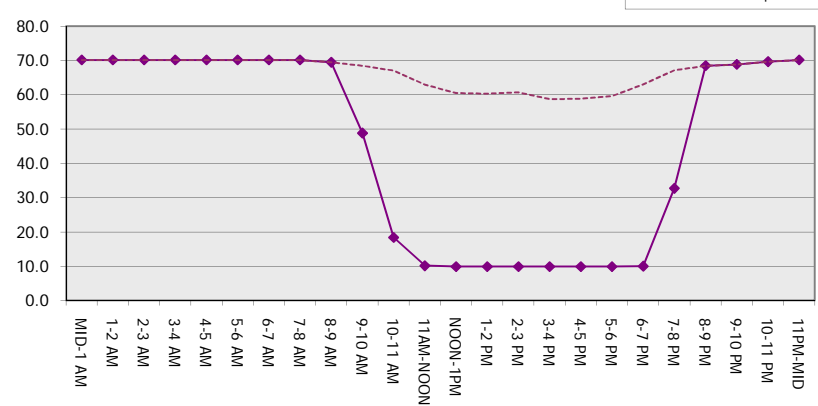
Main Route Average Delay Per Vehicle (Minutes)



Main Route - Average Queue Length (Vehicles)



Main Route - Average Speed (MPH)



IH 94: CTH Y/LAYTON AVE TO CTH ZZ/COLLEGE AVE (MILWAUKEE COUNTY) OFF-PEAK DAY CLOSURE NO DIVERSION ROUTE (MAX QUEUE METHOD)	OCTOBER
	Analyzed for 2009 Construction Season

SUMMARY OF TRAFFIC MODEL OUTPUT

SUNDAY EASTBOUND DIRECTION

TIME OF DAY	FLOWS AND CAPACITY IN VEH/HR						AVERAGE SPEEDS IN MPH			
	MAIN ROUTE		SITE CAPA CITY	FLOW		AV.DEL PER VEH (MINS)	AVERAGE QUEUE (VEH)	MAIN ROUTE		SITE
	DEMAND FLOW	PCT HEAVY		MAIN ROUTE	'DIVER TED'			WITHOUT WORK ZONE	WITH WORK ZONE	
MID-1 AM	1333	0.0	OFF	1333	0	0.00	0	70.2	70.2	70.2
1-2 AM	903	0.0	OFF	903	0	0.00	0	70.2	70.2	70.2
2-3 AM	968	0.0	OFF	968	0	0.00	0	70.2	70.2	70.2
3-4 AM	607	0.0	OFF	607	0	0.00	0	70.2	70.2	70.2
4-5 AM	654	0.0	OFF	654	0	0.00	0	70.2	70.2	70.2
5-6 AM	899	0.0	OFF	899	0	0.00	0	70.2	70.2	70.2
6-7 AM	1335	0.0	OFF	1335	0	0.00	0	70.2	70.2	70.2
7-8 AM	1692	0.0	OFF	1692	0	0.00	0	69.9	69.9	69.9
8-9 AM	2283	0.0	OFF	2283	0	0.00	0	69.2	69.2	69.2
9-10 AM	3392	0.0	2999	3392	0	2.60	137	67.8	27.6	36.9
10-11 AM	4161	0.0	3000	3522	639	14.44+	778	63.7	10.8	36.9
11AM-NOON	4548	0.0	3000	3044	1504	17.44+	936	61.1	9.9	36.9
NOON-1PM	5161	0.0	2999	3000	2161	17.62+	961	56.9	9.9	36.9
1-2 PM	5397	0.0	3000	3000	2397	17.52+	961	55.3	9.9	36.9
2-3 PM	5435	0.0	3000	3000	2435	17.50+	961	55.0	9.9	36.9
3-4 PM	5591	0.0	3000	3000	2591	17.42+	961	54.0	9.9	36.9
4-5 PM	5511	0.0	3000	3000	2511	17.46+	961	54.5	9.9	36.9
5-6 PM	4908	0.0	3000	3000	1908	17.73+	961	58.6	9.9	36.9
6-7 PM	4595	0.0	3000	2973	1623	17.65+	949	60.8	9.9	36.9
7-8 PM	3848	0.0	OFF	3848	0	2.21	201	65.9	29.7	29.7
8-9 PM	2813	0.0	OFF	2813	0	0.00	0	68.6	68.6	68.6
9-10 PM	2282	0.0	OFF	2282	0	0.00	0	69.2	69.2	69.2
10-11 PM	1637	0.0	OFF	1637	0	0.00	0	70.0	70.0	70.0
11PM-MID	1258	0.0	OFF	1258	0	0.00	0	70.2	70.2	70.2

"OFF" INDICATES NO ROAD WORK (ALL LANES OPEN TO TRAFFIC)

+ INDICATES QUEUEING EXCEEDS USER-SPECIFIED MAXIMUM LIMIT

----- SITE BREAKDOWN DELAYS -----	
BREAKDOWN DURATION (MINS)	0
RANGE OF QUEUE DELAY - MIN (VEH-H) MAX	0.0
AV BREAKDOWNS PER DAY	0.00
AV QUEUE DELAY/DAY (VEH-H)	0.0
AV TOTAL DELAY/DAY (VEH-H)	0.0

----- SITE ACCIDENT DELAYS -----	
BREAKDOWN DURATION (MINS)	0
RANGE OF QUEUE DELAY - MIN (VEH-H) MAX	0
AV BREAKDOWNS PER DAY	0
AV QUEUE DELAY/DAY (VEH-H)	0
AV TOTAL DELAY/DAY (VEH-H)	0

AVERAGE ACCIDENT NUMBERS (PIA/DAY)	
MAIN ROUTE WITHOUT WORKS	0.0227
MAIN ROUTE WITH WORKS	0.0150
'DIVERSION'	0.0131

PIA: Personal Injury Accidents

ECONOMIC IMPACT ON ROAD USERS	
ROAD USER COSTS PER DAY	\$219,900
CONGESTED HOURS PER DAY*	9

*Delays Exceeding User-Specified Maximum

IH 94: CTH Y/LAYTON AVE TO CTH ZZ/COLLEGE AVE (MILWAUKEE COUNTY)
OFF-PEAK DAY CLOSURE
NO DIVERSION ROUTE (MAX QUEUE METHOD)

OCTOBER

Analyzed for 2009
 Construction Season

GRAPHICAL REPRESENTATION OF TRAFFIC MODEL INPUT AND OUTPUT

SUNDAY EASTBOUND DIRECTION

