

IH 94: CTH Y/LAYTON AVE TO CTH ZZ/COLLEGE AVE (MILWAUKEE COUNTY) OFF-PEAK DAY CLOSURE NO DIVERSION ROUTE (MAX QUEUE METHOD)	OCTOBER
	Analyzed for 2009 Construction Season

SUMMARY OF TRAFFIC MODEL OUTPUT

SATURDAY WESTBOUND DIRECTION

TIME OF DAY	FLOWS AND CAPACITY IN VEH/HR						AVERAGE SPEEDS IN MPH				
	MAIN ROUTE		SITE CAPA CITY	FLOW		AV.DEL PER VEH (MINS)	AVERAGE QUEUE (VEH)	MAIN ROUTE		SITE	
	DEMAND FLOW	PCT HEAVY		MAIN ROUTE	'DIVER TED'			WITHOUT WORK ZONE	WITH WORK ZONE		
MID-1 AM	1336	0.0	OFF	1336	0	0.00	0	70.2	70.2	70.2	
1-2 AM	752	0.0	OFF	752	0	0.00	0	70.2	70.2	70.2	
2-3 AM	664	0.0	OFF	664	0	0.00	0	70.2	70.2	70.2	
3-4 AM	607	0.0	OFF	607	0	0.00	0	70.2	70.2	70.2	
4-5 AM	760	0.0	OFF	760	0	0.00	0	70.2	70.2	70.2	
5-6 AM	1258	0.0	OFF	1258	0	0.00	0	70.2	70.2	70.2	
6-7 AM	1988	0.0	OFF	1988	0	0.00	0	69.6	69.6	69.6	
7-8 AM	2737	0.0	OFF	2737	0	0.00	0	68.6	68.6	68.6	
8-9 AM	3601	0.0	2999	3601	0	4.50	258	67.6	20.3	36.9	
9-10 AM	4067	0.0	2999	3298	769	16.22+	863	64.4	10.2	36.9	
10-11 AM	4453	0.0	2999	3043	1410	17.28+	925	61.7	10.0	36.9	
11AM-NOON	4814	0.0	2999	3011	1802	17.74+	959	59.3	9.9	36.9	
NOON-1PM	4993	0.0	3000	3000	1993	17.70+	961	58.1	9.9	36.9	
1-2 PM	4791	0.0	3000	3001	1790	17.78+	961	59.4	9.9	36.9	
2-3 PM	4874	0.0	3000	3000	1874	17.75+	961	58.9	9.9	36.9	
3-4 PM	5022	0.0	3000	3000	2022	17.68+	961	57.9	9.9	36.9	
4-5 PM	4968	0.0	3000	3000	1968	17.71+	961	58.2	9.9	36.9	
5-6 PM	5041	0.0	3000	3000	2041	17.68+	961	57.7	9.9	36.9	
6-7 PM	4512	0.0	OFF	4512	0	3.29	305	61.4	22.9	22.9	
7-8 PM	3665	0.0	OFF	3665	0	0.00	0	67.1	67.1	67.1	
8-9 PM	2946	0.0	OFF	2946	0	0.00	0	68.4	68.4	68.4	
9-10 PM	2810	0.0	OFF	2810	0	0.00	0	68.6	68.6	68.6	
10-11 PM	2532	0.0	OFF	2532	0	0.00	0	68.9	68.9	68.9	
11PM-MID	2057	0.0	OFF	2057	0	0.00	0	69.5	69.5	69.5	

"OFF" INDICATES NO ROAD WORK (ALL LANES OPEN TO TRAFFIC)

+ INDICATES QUEUEING EXCEEDS USER-SPECIFIED MAXIMUM LIMIT

----- SITE BREAKDOWN DELAYS -----	
BREAKDOWN DURATION (MINS)	0
RANGE OF QUEUE DELAY - MIN (VEH-H) MAX	0.0
AV BREAKDOWNS PER DAY	0.00
AV QUEUE DELAY/DAY (VEH-H)	0.0
AV TOTAL DELAY/DAY (VEH-H)	0.0

----- SITE ACCIDENT DELAYS -----	
BREAKDOWN DURATION (MINS)	0
RANGE OF QUEUE DELAY - MIN (VEH-H) MAX	0
AV BREAKDOWNS PER DAY	0
AV QUEUE DELAY/DAY (VEH-H)	0
AV TOTAL DELAY/DAY (VEH-H)	0

AVERAGE ACCIDENT NUMBERS (PIA/DAY)	
MAIN ROUTE WITHOUT WORKS	0.0240
MAIN ROUTE WITH WORKS	0.0169
'DIVERSION'	0.0116
PIA: Personal Injury Accidents	
IMPACTS ON ROAD USERS	
ROAD USER COSTS PER DAY	\$213,715
CONGESTED HOURS PER DAY*	9

*Delays Exceeding User-Specified Maximum

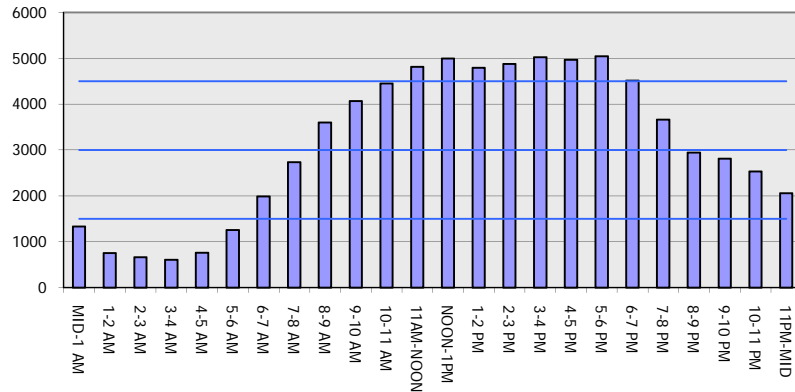
IH 94: CTH Y/LAYTON AVE TO CTH ZZ/COLLEGE AVE (MILWAUKEE COUNTY)
OFF-PEAK DAY CLOSURE
NO DIVERSION ROUTE (MAX QUEUE METHOD)

OCTOBER

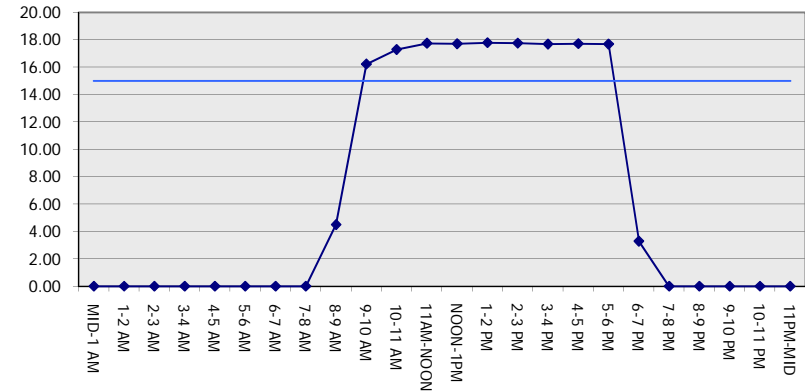
Analyzed for 2009
 Construction Season

GRAPHICAL REPRESENTATION OF TRAFFIC MODEL INPUT AND OUTPUT
SATURDAY WESTBOUND DIRECTION

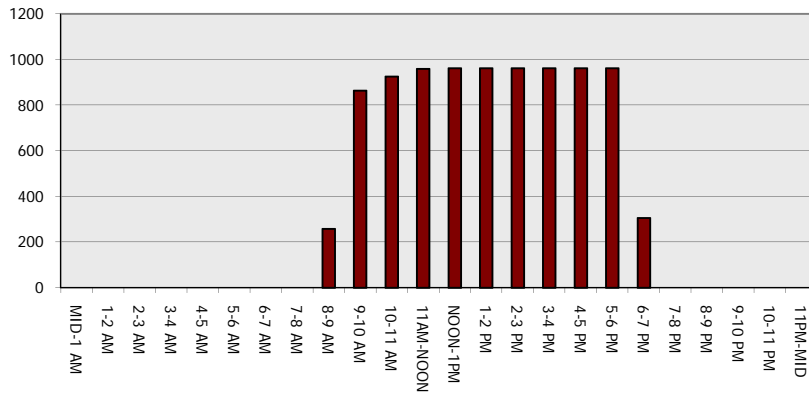
Main Route - Traffic Demand (Vehicles Per Hour)



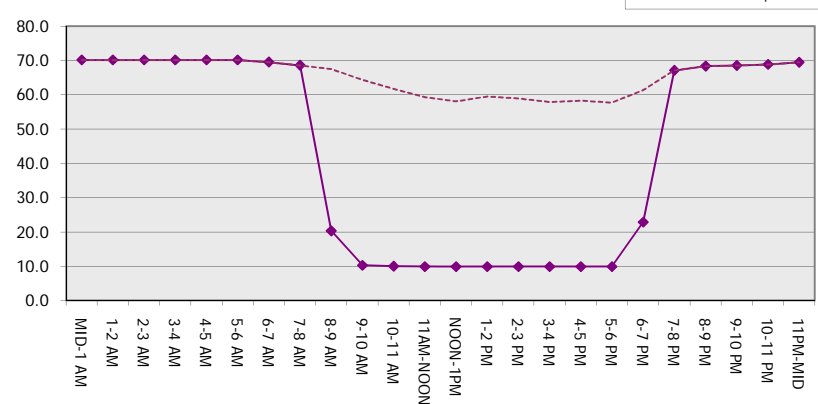
Main Route Average Delay Per Vehicle (Minutes)



Main Route - Average Queue Length (Vehicles)



Main Route - Average Speed (MPH)



IH 94: CTH Y/LAYTON AVE TO CTH ZZ/COLLEGE AVE (MILWAUKEE COUNTY) OFF-PEAK DAY CLOSURE NO DIVERSION ROUTE (MAX QUEUE METHOD)	OCTOBER
	Analyzed for 2009 Construction Season

SUMMARY OF TRAFFIC MODEL OUTPUT

SATURDAY EASTBOUND DIRECTION

TIME OF DAY	FLOWS AND CAPACITY IN VEH/HR							AVERAGE SPEEDS IN MPH		
	MAIN ROUTE		SITE CAPA CITY	FLOW		AV.DEL PER VEH (MINS)	AVERAGE QUEUE (VEH)	MAIN ROUTE		SITE
	DEMAND FLOW	PCT HEAVY		MAIN ROUTE	'DIVER TED'			WITHOUT WORK ZONE	WITH WORK ZONE	
MID-1 AM	1277	0.0	OFF	1277	0	0.00	0	70.2	70.2	70.2
1-2 AM	848	0.0	OFF	848	0	0.00	0	70.2	70.2	70.2
2-3 AM	805	0.0	OFF	805	0	0.00	0	70.2	70.2	70.2
3-4 AM	743	0.0	OFF	743	0	0.00	0	70.2	70.2	70.2
4-5 AM	935	0.0	OFF	935	0	0.00	0	70.2	70.2	70.2
5-6 AM	1589	0.0	OFF	1589	0	0.00	0	70.0	70.0	70.0
6-7 AM	2169	0.0	OFF	2169	0	0.00	0	69.4	69.4	69.4
7-8 AM	2511	0.0	OFF	2511	0	0.00	0	68.9	68.9	68.9
8-9 AM	3306	0.0	2999	3306	0	2.15	101	67.9	30.6	36.9
9-10 AM	4155	0.0	3000	3607	547	13.47+	735	63.8	11.2	36.9
10-11 AM	4514	0.0	3000	3037	1477	17.39+	933	61.3	9.9	36.9
11AM-NOON	5010	0.0	2999	3000	2010	17.69+	961	57.9	9.9	36.9
NOON-1PM	5221	0.0	3000	3000	2221	17.60+	961	56.5	9.9	36.9
1-2 PM	4686	0.0	3000	3005	1681	17.76+	957	60.2	9.9	36.9
2-3 PM	5061	0.0	2999	3000	2061	17.67+	961	57.6	9.9	36.9
3-4 PM	5087	0.0	3000	3000	2087	17.66+	961	57.4	9.9	36.9
4-5 PM	4750	0.0	3000	3002	1748	17.77+	959	59.7	9.9	36.9
5-6 PM	4526	0.0	3000	2968	1558	17.56+	943	61.2	9.9	36.9
6-7 PM	3902	0.0	OFF	3902	0	2.24	204	65.5	29.4	29.4
7-8 PM	3241	0.0	OFF	3241	0	0.00	0	68.0	68.0	68.0
8-9 PM	2736	0.0	OFF	2736	0	0.00	0	68.6	68.6	68.6
9-10 PM	2596	0.0	OFF	2596	0	0.00	0	68.8	68.8	68.8
10-11 PM	2474	0.0	OFF	2474	0	0.00	0	69.0	69.0	69.0
11PM-MID	1860	0.0	OFF	1860	0	0.00	0	69.7	69.7	69.7

"OFF" INDICATES NO ROAD WORK (ALL LANES OPEN TO TRAFFIC)

+ INDICATES QUEUEING EXCEEDS USER-SPECIFIED MAXIMUM LIMIT

----- SITE BREAKDOWN DELAYS -----	
BREAKDOWN DURATION (MINS)	0
RANGE OF QUEUE DELAY - MIN (VEH-H) MAX	0.0
AV BREAKDOWNS PER DAY	0.00
AV QUEUE DELAY/DAY (VEH-H)	0.0
AV TOTAL DELAY/DAY (VEH-H)	0.0

----- SITE ACCIDENT DELAYS -----	
BREAKDOWN DURATION (MINS)	0
RANGE OF QUEUE DELAY - MIN (VEH-H) MAX	0
AV BREAKDOWNS PER DAY	0
AV QUEUE DELAY/DAY (VEH-H)	0
AV TOTAL DELAY/DAY (VEH-H)	0

AVERAGE ACCIDENT NUMBERS (PIA/DAY)	
MAIN ROUTE WITHOUT WORKS	0.0236
MAIN ROUTE WITH WORKS	0.0166
'DIVERSION'	0.0113

PIA: Personal Injury Accidents

ECONOMIC IMPACT ON ROAD USERS	
ROAD USER COSTS PER DAY	\$206,059
CONGESTED HOURS PER DAY*	9

*Delays Exceeding User-Specified Maximum

IH 94: CTH Y/LAYTON AVE TO CTH ZZ/COLLEGE AVE (MILWAUKEE COUNTY)
OFF-PEAK DAY CLOSURE
NO DIVERSION ROUTE (MAX QUEUE METHOD)

OCTOBER
 Analyzed for 2009
 Construction Season

GRAPHICAL REPRESENTATION OF TRAFFIC MODEL INPUT AND OUTPUT

SATURDAY EASTBOUND DIRECTION

