

IH 43/94: BECHER ST TO MITCHELL INTERCHANGE (MILWAUKEE COUNTY) OFF-PEAK DAY 2 LANE CLOSURE NO DIVERSION ROUTE (MAX QUEUE METHOD)	AUGUST
	Analyzed for 2009 Construction Season

SUMMARY OF TRAFFIC MODEL OUTPUT

SUNDAY WESTBOUND DIRECTION

TIME OF DAY	FLOWS AND CAPACITY IN VEH/HR						AVERAGE SPEEDS IN MPH				
	MAIN ROUTE		SITE CAPA CITY	FLOW		AV.DEL PER VEH (MINS)	AVERAGE QUEUE (VEH)	MAIN ROUTE		SITE	
	DEMAND FLOW	PCT HEAVY		MAIN ROUTE	'DIVER TED'			WITHOUT WORK ZONE	WITH WORK ZONE		
MID-1 AM	1587	0.0	OFF	1587	0	0.00	0	68.7	68.7	68.7	
1-2 AM	1166	0.0	OFF	1166	0	0.00	0	69.3	69.3	69.3	
2-3 AM	914	0.0	OFF	914	0	0.00	0	69.6	69.6	69.6	
3-4 AM	509	0.0	OFF	509	0	0.00	0	70.1	70.1	70.1	
4-5 AM	465	0.0	OFF	465	0	0.00	0	70.2	70.2	70.2	
5-6 AM	606	0.0	OFF	606	0	0.00	0	70.0	70.0	70.0	
6-7 AM	888	0.0	OFF	888	0	0.00	0	69.6	69.6	69.6	
7-8 AM	1084	0.0	OFF	1084	0	0.00	0	69.4	69.4	69.4	
8-9 AM	1570	0.0	OFF	1570	0	0.00	0	68.8	68.8	68.8	
9-10 AM	2359	0.0	1499	1839	521	10.64+	284	67.8	15.3	30.8	
10-11 AM	3024	0.0	1500	1500	1524	16.29+	400	67.0	10.8	30.8	
11AM-NOON	3158	0.0	1499	1500	1658	16.28+	400	66.8	10.8	30.8	
NOON-1PM	3713	0.0	1499	1500	2213	16.22+	400	65.5	10.8	30.8	
1-2 PM	4063	0.0	1500	1500	2563	16.10+	400	63.1	10.8	30.8	
2-3 PM	4041	0.0	1500	1500	2541	16.11+	400	63.2	10.8	30.8	
3-4 PM	4100	0.0	1500	1500	2600	16.08+	400	62.8	10.8	30.8	
4-5 PM	3964	0.0	1500	1500	2464	16.13+	400	63.8	10.8	30.8	
5-6 PM	3394	0.0	1500	1500	1894	16.27+	400	66.5	10.8	30.8	
6-7 PM	3238	0.0	1500	1500	1738	16.28+	400	66.7	10.8	30.8	
7-8 PM	2594	0.0	OFF	2594	0	0.19	16	67.5	63.7	63.7	
8-9 PM	2275	0.0	OFF	2275	0	0.00	0	67.9	67.9	67.9	
9-10 PM	1908	0.0	OFF	1908	0	0.00	0	68.4	68.4	68.4	
10-11 PM	1428	0.0	OFF	1428	0	0.00	0	68.9	68.9	68.9	
11PM-MID	1006	0.0	OFF	1006	0	0.00	0	69.5	69.5	69.5	

"OFF" INDICATES NO ROAD WORK (ALL LANES OPEN TO TRAFFIC)

+ INDICATES QUEUEING EXCEEDS USER-SPECIFIED MAXIMUM LIMIT

----- SITE BREAKDOWN DELAYS -----	
BREAKDOWN DURATION (MINS)	0
RANGE OF QUEUE DELAY - MIN (VEH-H) MAX	0.0
AV BREAKDOWNS PER DAY	0.00
AV QUEUE DELAY/DAY (VEH-H)	0.0
AV TOTAL DELAY/DAY (VEH-H)	0.0

----- SITE ACCIDENT DELAYS -----	
BREAKDOWN DURATION (MINS)	0
RANGE OF QUEUE DELAY - MIN (VEH-H) MAX	0
AV BREAKDOWNS PER DAY	0
AV QUEUE DELAY/DAY (VEH-H)	0
AV TOTAL DELAY/DAY (VEH-H)	0

AVERAGE ACCIDENT NUMBERS (PIA/DAY)	
MAIN ROUTE WITHOUT WORKS	0.0295
MAIN ROUTE WITH WORKS	0.0175
'DIVERSION'	0.0254
PIA: Personal Injury Accidents	
IMPACTS ON ROAD USERS	
ROAD USER COSTS PER DAY	\$154,545
CONGESTED HOURS PER DAY*	10

*Delays Exceeding User-Specified Maximum

IH 43/94: BECHER ST TO MITCHELL INTERCHANGE (MILWAUKEE COUNTY)
OFF-PEAK DAY 2 LANE CLOSURE
NO DIVERSION ROUTE (MAX QUEUE METHOD)

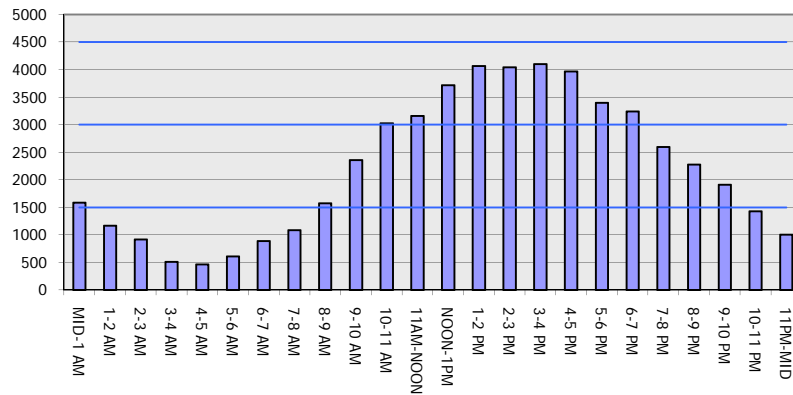
AUGUST

Analyzed for 2009
 Construction Season

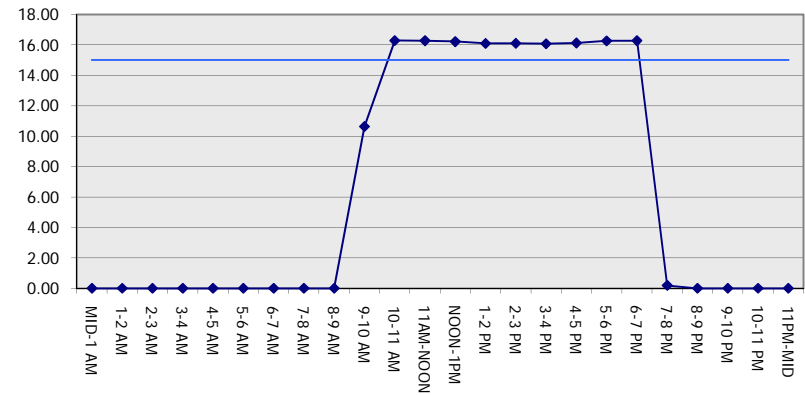
GRAPHICAL REPRESENTATION OF TRAFFIC MODEL INPUT AND OUTPUT

SUNDAY WESTBOUND DIRECTION

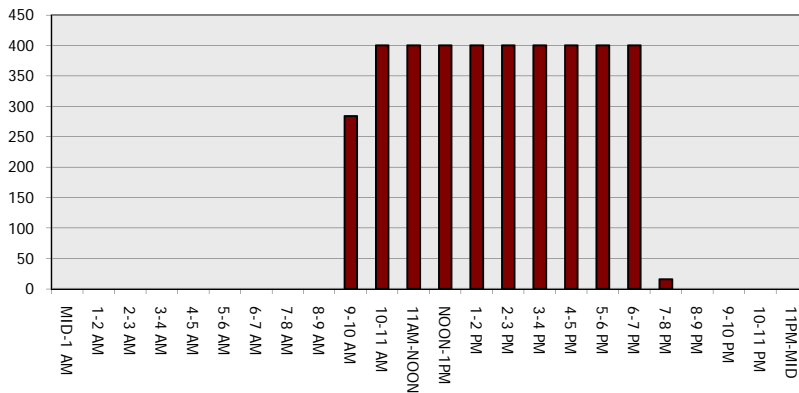
Main Route - Traffic Demand (Vehicles Per Hour)



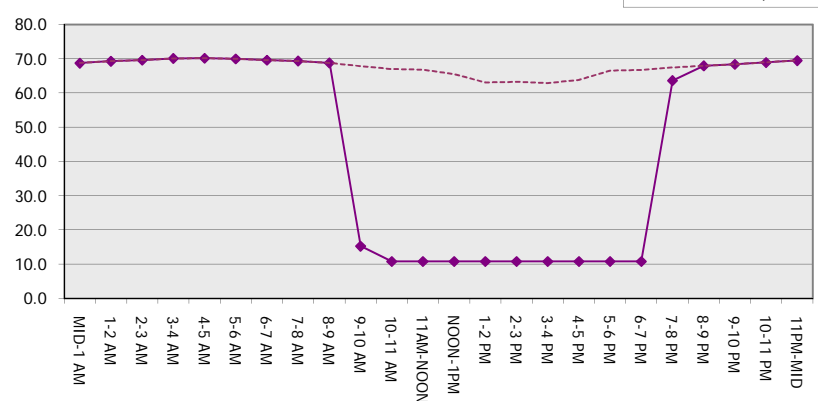
Main Route Average Delay Per Vehicle (Minutes)



Main Route - Average Queue Length (Vehicles)



Main Route - Average Speed (MPH)



IH 43/94: BECHER ST TO MITCHELL INTERCHANGE (MILWAUKEE COUNTY) OFF-PEAK DAY 2 LANE CLOSURE NO DIVERSION ROUTE (MAX QUEUE METHOD)	AUGUST
	Analyzed for 2009 Construction Season

SUMMARY OF TRAFFIC MODEL OUTPUT

SUNDAY EASTBOUND DIRECTION

TIME OF DAY	FLOWS AND CAPACITY IN VEH/HR						AVERAGE SPEEDS IN MPH			
	MAIN ROUTE		SITE CAPA CITY	FLOW		AV.DEL PER VEH (MINS)	AVERAGE QUEUE (VEH)	MAIN ROUTE		SITE
	DEMAND FLOW	PCT HEAVY		MAIN ROUTE	'DIVER TED'			WITHOUT WORK ZONE	WITH WORK ZONE	
MID-1 AM	997	0.0	OFF	997	0	0.00	0	69.5	69.5	69.5
1-2 AM	609	0.0	OFF	609	0	0.00	0	70.0	70.0	70.0
2-3 AM	426	0.0	OFF	426	0	0.00	0	70.2	70.2	70.2
3-4 AM	278	0.0	OFF	278	0	0.00	0	70.2	70.2	70.2
4-5 AM	266	0.0	OFF	266	0	0.00	0	70.2	70.2	70.2
5-6 AM	416	0.0	OFF	416	0	0.00	0	70.2	70.2	70.2
6-7 AM	658	0.0	OFF	658	0	0.00	0	69.9	69.9	69.9
7-8 AM	896	0.0	OFF	896	0	0.00	0	69.6	69.6	69.6
8-9 AM	1310	0.0	OFF	1310	0	0.00	0	69.1	69.1	69.1
9-10 AM	2033	0.0	1499	2021	12	7.69+	226	68.2	19.5	30.8
10-11 AM	2512	0.0	1500	1392	1119	15.89+	391	67.6	11.1	32.2
11AM-NOON	3059	0.0	1500	1500	1559	16.29+	400	66.9	10.8	30.8
NOON-1PM	3437	0.0	1500	1500	1937	16.27+	400	66.4	10.8	30.8
1-2 PM	3251	0.0	1500	1500	1751	16.28+	400	66.7	10.8	30.8
2-3 PM	3033	0.0	1500	1500	1533	16.29+	400	66.9	10.8	30.8
3-4 PM	3017	0.0	1500	1500	1517	16.29+	400	67.0	10.8	30.8
4-5 PM	3016	0.0	1500	1500	1516	16.29+	400	67.0	10.8	30.8
5-6 PM	2729	0.0	1500	1500	1229	16.31+	400	67.3	10.8	30.8
6-7 PM	2743	0.0	1500	1500	1243	16.31+	400	67.3	10.8	30.8
7-8 PM	2386	0.0	OFF	2386	0	0.26	23	67.8	62.5	62.5
8-9 PM	2033	0.0	OFF	2033	0	0.00	0	68.2	68.2	68.2
9-10 PM	1874	0.0	OFF	1874	0	0.00	0	68.4	68.4	68.4
10-11 PM	1386	0.0	OFF	1386	0	0.00	0	69.0	69.0	69.0
11PM-MID	1024	0.0	OFF	1024	0	0.00	0	69.5	69.5	69.5

"OFF" INDICATES NO ROAD WORK (ALL LANES OPEN TO TRAFFIC)

+ INDICATES QUEUEING EXCEEDS USER-SPECIFIED MAXIMUM LIMIT

----- SITE BREAKDOWN DELAYS -----	
BREAKDOWN DURATION (MINS)	0
RANGE OF QUEUE DELAY - MIN	0.0
(VEH-H) MAX	0.0
AV BREAKDOWNS PER DAY	0.00
AV QUEUE DELAY/DAY (VEH-H)	0.0
AV TOTAL DELAY/DAY (VEH-H)	0.0

----- SITE ACCIDENT DELAYS -----	
BREAKDOWN DURATION (MINS)	0
RANGE OF QUEUE DELAY - MIN	0
(VEH-H) MAX	0
AV BREAKDOWNS PER DAY	0
AV QUEUE DELAY/DAY (VEH-H)	0
AV TOTAL DELAY/DAY (VEH-H)	0

AVERAGE ACCIDENT NUMBERS (PIA/DAY)	
MAIN ROUTE WITHOUT WORKS	0.0242
MAIN ROUTE WITH WORKS	0.0157
'DIVERSION'	0.0173

PIA: Personal Injury Accidents

ECONOMIC IMPACT ON ROAD USERS	
ROAD USER COSTS PER DAY	\$125,846
CONGESTED HOURS PER DAY*	10

*Delays Exceeding User-Specified Maximum

IH 43/94: BECHER ST TO MITCHELL INTERCHANGE (MILWAUKEE COUNTY)
OFF-PEAK DAY 2 LANE CLOSURE
NO DIVERSION ROUTE (MAX QUEUE METHOD)

AUGUST
 Analyzed for 2009
 Construction Season

GRAPHICAL REPRESENTATION OF TRAFFIC MODEL INPUT AND OUTPUT
SUNDAY EASTBOUND DIRECTION

