

<b>IH 43/94: BECHER ST TO MITCHELL INTERCHANGE (MILWAUKEE COUNTY)</b> <b>OFF-PEAK DAY CLOSURE</b> <b>NO DIVERSION ROUTE (MAX QUEUE METHOD)</b>	<b>AUGUST</b>
	Analyzed for 2009 Construction Season

**SUMMARY OF TRAFFIC MODEL OUTPUT**

SUNDAY WESTBOUND DIRECTION

TIME OF DAY	FLOWS AND CAPACITY IN VEH/HR						AVERAGE SPEEDS IN MPH				
	MAIN ROUTE		SITE CAPA CITY	FLOW		AV.DEL PER VEH (MINS)	AVERAGE QUEUE (VEH)	MAIN ROUTE		SITE	
	DEMAND FLOW	PCT HEAVY		MAIN ROUTE	'DIVER TED'			WITHOUT WORK ZONE	WITH WORK ZONE		
MID-1 AM	1587	0.0	OFF	1587	0	0.00	0	68.7	68.7	68.7	
1-2 AM	1166	0.0	OFF	1166	0	0.00	0	69.3	69.3	69.3	
2-3 AM	914	0.0	OFF	914	0	0.00	0	69.6	69.6	69.6	
3-4 AM	509	0.0	OFF	509	0	0.00	0	70.1	70.1	70.1	
4-5 AM	465	0.0	OFF	465	0	0.00	0	70.2	70.2	70.2	
5-6 AM	606	0.0	OFF	606	0	0.00	0	70.0	70.0	70.0	
6-7 AM	888	0.0	OFF	888	0	0.00	0	69.6	69.6	69.6	
7-8 AM	1084	0.0	OFF	1084	0	0.00	0	69.4	69.4	69.4	
8-9 AM	1570	0.0	OFF	1570	0	0.00	0	68.8	68.8	68.8	
9-10 AM	2359	0.0	2999	2359	0	0.38	0	67.8	60.4	47.8	
10-11 AM	3024	0.0	2999	3024	0	0.96	15	67.0	51.3	37.8	
11AM-NOON	3158	0.0	2999	3158	0	2.80	119	66.8	35.3	37.3	
NOON-1PM	3713	0.0	3000	3713	0	9.80+	548	65.5	16.6	37.3	
1-2 PM	4063	0.0	2999	2933	1130	15.82+	844	63.1	12.2	37.3	
2-3 PM	4041	0.0	2999	2983	1058	15.71+	837	63.2	12.3	37.3	
3-4 PM	4100	0.0	2999	2991	1109	15.68+	836	62.8	12.3	37.3	
4-5 PM	3964	0.0	3000	2999	965	15.70+	835	63.8	12.3	37.3	
5-6 PM	3394	0.0	3000	2999	395	15.82+	833	66.5	12.3	37.3	
6-7 PM	3238	0.0	3000	2999	239	15.82+	832	66.7	12.3	37.3	
7-8 PM	2594	0.0	OFF	2594	0	1.08	102	67.5	50.1	50.1	
8-9 PM	2275	0.0	OFF	2275	0	0.00	0	67.9	67.9	67.9	
9-10 PM	1908	0.0	OFF	1908	0	0.00	0	68.4	68.4	68.4	
10-11 PM	1428	0.0	OFF	1428	0	0.00	0	68.9	68.9	68.9	
11PM-MID	1006	0.0	OFF	1006	0	0.00	0	69.5	69.5	69.5	

"OFF" INDICATES NO ROAD WORK (ALL LANES OPEN TO TRAFFIC)

+ INDICATES QUEUEING EXCEEDS USER-SPECIFIED MAXIMUM LIMIT

*----- SITE BREAKDOWN DELAYS -----*	
BREAKDOWN DURATION (MINS)	0
RANGE OF QUEUE DELAY - MIN (VEH-H) MAX	0.0
AV BREAKDOWNS PER DAY	0.00
AV QUEUE DELAY/DAY (VEH-H)	0.0
AV TOTAL DELAY/DAY (VEH-H)	0.0

*----- SITE ACCIDENT DELAYS -----*	
BREAKDOWN DURATION (MINS)	0
RANGE OF QUEUE DELAY - MIN (VEH-H) MAX	0
AV BREAKDOWNS PER DAY	0
AV QUEUE DELAY/DAY (VEH-H)	0
AV TOTAL DELAY/DAY (VEH-H)	0

AVERAGE ACCIDENT NUMBERS (PIA/DAY)	
MAIN ROUTE WITHOUT WORKS	0.0295
MAIN ROUTE WITH WORKS	0.0248
'DIVERSION'	0.0063
PIA: Personal Injury Accidents	
IMPACTS ON ROAD USERS	
ROAD USER COSTS PER DAY	\$113,522
CONGESTED HOURS PER DAY*	7

\*Delays Exceeding User-Specified Maximum

**IH 43/94: BECHER ST TO MITCHELL INTERCHANGE (MILWAUKEE COUNTY)**  
**OFF-PEAK DAY CLOSURE**  
**NO DIVERSION ROUTE (MAX QUEUE METHOD)**

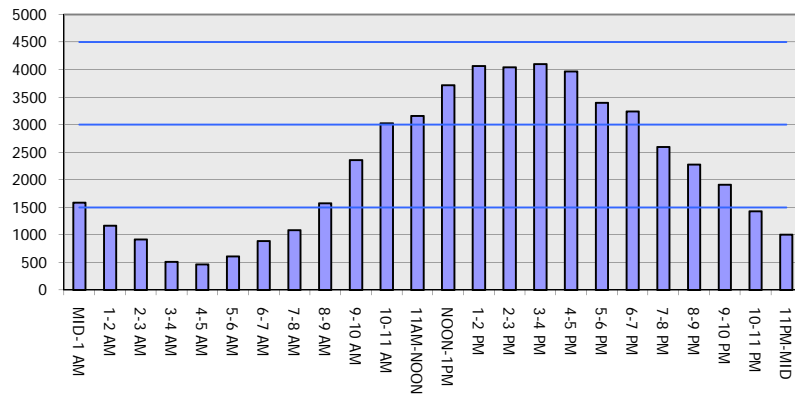
**AUGUST**

Analyzed for 2009  
 Construction Season

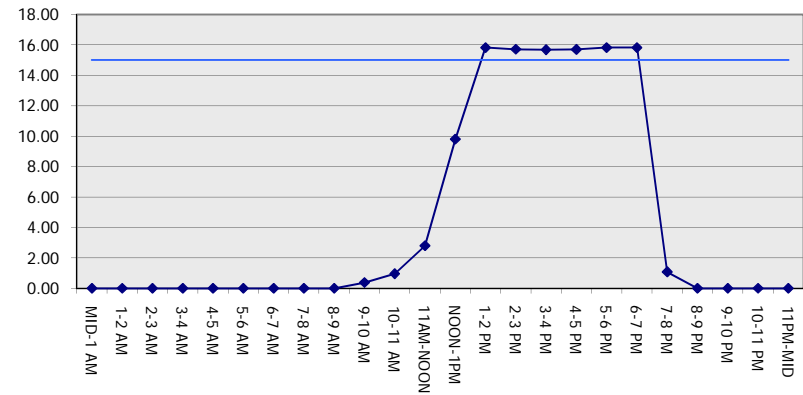
**GRAPHICAL REPRESENTATION OF TRAFFIC MODEL INPUT AND OUTPUT**

**SUNDAY WESTBOUND DIRECTION**

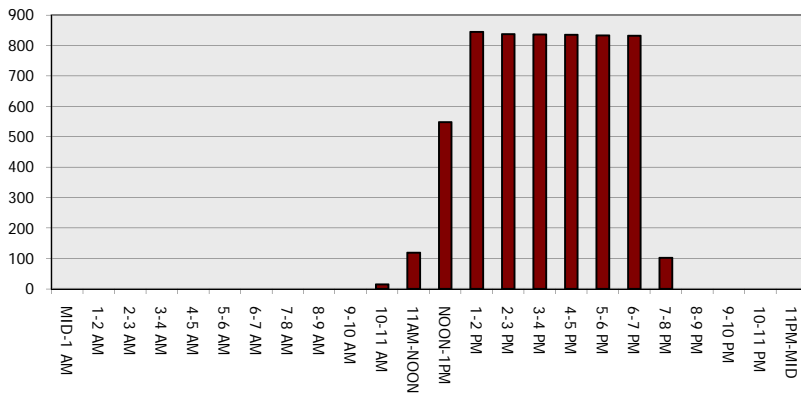
**Main Route - Traffic Demand (Vehicles Per Hour)**



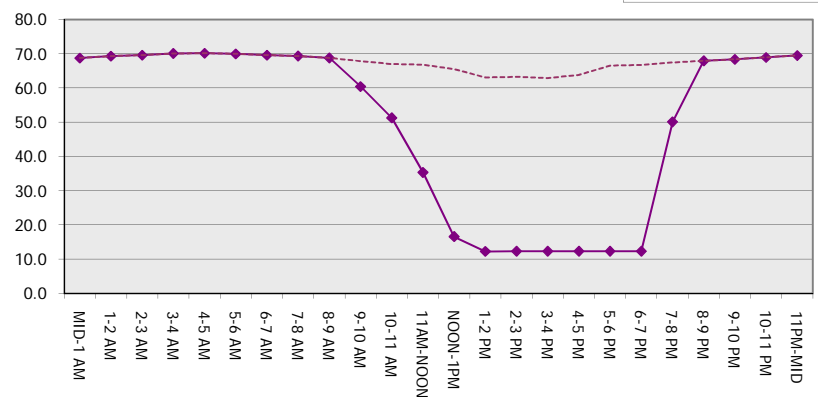
**Main Route Average Delay Per Vehicle (Minutes)**



**Main Route - Average Queue Length (Vehicles)**



**Main Route - Average Speed (MPH)**



<b>IH 43/94: BECHER ST TO MITCHELL INTERCHANGE (MILWAUKEE COUNTY)</b> <b>OFF-PEAK DAY CLOSURE</b> <b>NO DIVERSION ROUTE (MAX QUEUE METHOD)</b>	<b>AUGUST</b>
	Analyzed for 2009 Construction Season

**SUMMARY OF TRAFFIC MODEL OUTPUT**

SUNDAY EASTBOUND DIRECTION

TIME OF DAY	FLOWS AND CAPACITY IN VEH/HR						AVERAGE SPEEDS IN MPH			
	MAIN ROUTE		SITE CAPA CITY	FLOW		AV.DEL PER VEH (MINS)	AVERAGE QUEUE (VEH)	MAIN ROUTE		SITE
	DEMAND FLOW	PCT HEAVY		MAIN ROUTE	'DIVER TED'			WITHOUT WORK ZONE	WITH WORK ZONE	
MID-1 AM	997	0.0	OFF	997	0	0.00	0	69.5	69.5	69.5
1-2 AM	609	0.0	OFF	609	0	0.00	0	70.0	70.0	70.0
2-3 AM	426	0.0	OFF	426	0	0.00	0	70.2	70.2	70.2
3-4 AM	278	0.0	OFF	278	0	0.00	0	70.2	70.2	70.2
4-5 AM	266	0.0	OFF	266	0	0.00	0	70.2	70.2	70.2
5-6 AM	416	0.0	OFF	416	0	0.00	0	70.2	70.2	70.2
6-7 AM	658	0.0	OFF	658	0	0.00	0	69.9	69.9	69.9
7-8 AM	896	0.0	OFF	896	0	0.00	0	69.6	69.6	69.6
8-9 AM	1310	0.0	OFF	1310	0	0.00	0	69.1	69.1	69.1
9-10 AM	2033	0.0	3000	2033	0	0.33	0	68.2	61.5	49.7
10-11 AM	2512	0.0	2999	2512	0	0.41	0	67.6	59.7	46.7
11AM-NOON	3059	0.0	2999	3059	0	1.06	21	66.9	50.0	37.7
NOON-1PM	3437	0.0	3000	3437	0	5.68	299	66.4	23.7	37.3
1-2 PM	3251	0.0	2999	3251	0	12.66+	662	66.7	13.7	37.3
2-3 PM	3033	0.0	2999	3033	0	15.22+	798	66.9	12.5	37.3
3-4 PM	3017	0.0	3000	3017	0	15.55+	816	67.0	12.4	37.3
4-5 PM	3016	0.0	2999	2991	25	15.72+	826	67.0	12.4	37.3
5-6 PM	2729	0.0	2999	2729	0	13.16+	688	67.3	13.5	37.3
6-7 PM	2743	0.0	3000	2743	0	8.34	426	67.3	18.3	37.3
7-8 PM	2386	0.0	OFF	2386	0	0.13	11	67.8	65.0	65.0
8-9 PM	2033	0.0	OFF	2033	0	0.00	0	68.2	68.2	68.2
9-10 PM	1874	0.0	OFF	1874	0	0.00	0	68.4	68.4	68.4
10-11 PM	1386	0.0	OFF	1386	0	0.00	0	69.0	69.0	69.0
11PM-MID	1024	0.0	OFF	1024	0	0.00	0	69.5	69.5	69.5

"OFF" INDICATES NO ROAD WORK (ALL LANES OPEN TO TRAFFIC)

+ INDICATES QUEUEING EXCEEDS USER-SPECIFIED MAXIMUM LIMIT

*----- SITE BREAKDOWN DELAYS -----*	
BREAKDOWN DURATION (MINS)	0
RANGE OF QUEUE DELAY - MIN (VEH-H) MAX	0.0
AV BREAKDOWNS PER DAY	0.00
AV QUEUE DELAY/DAY (VEH-H)	0.0
AV TOTAL DELAY/DAY (VEH-H)	0.0

*----- SITE ACCIDENT DELAYS -----*	
BREAKDOWN DURATION (MINS)	0
RANGE OF QUEUE DELAY - MIN (VEH-H) MAX	0
AV BREAKDOWNS PER DAY	0
AV QUEUE DELAY/DAY (VEH-H)	0
AV TOTAL DELAY/DAY (VEH-H)	0

AVERAGE ACCIDENT NUMBERS (PIA/DAY)	
MAIN ROUTE WITHOUT WORKS	0.0242
MAIN ROUTE WITH WORKS	0.0222
'DIVERSION'	0.0000

PIA: Personal Injury Accidents

ECONOMIC IMPACT ON ROAD USERS	
ROAD USER COSTS PER DAY	\$73,248
CONGESTED HOURS PER DAY*	5

\*Delays Exceeding User-Specified Maximum

**IH 43/94: BECHER ST TO MITCHELL INTERCHANGE (MILWAUKEE COUNTY)**  
**OFF-PEAK DAY CLOSURE**  
**NO DIVERSION ROUTE (MAX QUEUE METHOD)**

**AUGUST**  
 Analyzed for 2009  
 Construction Season

**GRAPHICAL REPRESENTATION OF TRAFFIC MODEL INPUT AND OUTPUT**  
**SUNDAY EASTBOUND DIRECTION**

