

<b>IH 43/94: BECHER ST TO MITCHELL INTERCHANGE (MILWAUKEE COUNTY)</b> <b>OFF-PEAK DAY 2 LANE CLOSURE</b> <b>NO DIVERSION ROUTE (MAX QUEUE METHOD)</b>	<b>AUGUST</b>
	Analyzed for 2009 Construction Season

**SUMMARY OF TRAFFIC MODEL OUTPUT**

SATURDAY WESTBOUND DIRECTION

TIME OF DAY	FLOWS AND CAPACITY IN VEH/HR						AVERAGE SPEEDS IN MPH			
	MAIN ROUTE		SITE CAPA CITY	FLOW		AV.DEL PER VEH (MINS)	AVERAGE QUEUE (VEH)	MAIN ROUTE		SITE
	DEMAND FLOW	PCT HEAVY		MAIN ROUTE	'DIVER TED'			WITHOUT WORK ZONE	WITH WORK ZONE	
MID-1 AM	1040	0.0	OFF	1040	0	0.00	0	69.4	69.4	69.4
1-2 AM	729	0.0	OFF	729	0	0.00	0	69.8	69.8	69.8
2-3 AM	742	0.0	OFF	742	0	0.00	0	69.8	69.8	69.8
3-4 AM	499	0.0	OFF	499	0	0.00	0	70.1	70.1	70.1
4-5 AM	587	0.0	OFF	587	0	0.00	0	70.0	70.0	70.0
5-6 AM	877	0.0	OFF	877	0	0.00	0	69.6	69.6	69.6
6-7 AM	1179	0.0	OFF	1179	0	0.00	0	69.2	69.2	69.2
7-8 AM	1540	0.0	OFF	1540	0	0.00	0	68.8	68.8	68.8
8-9 AM	2187	0.0	1499	1874	313	9.42+	259	68.0	16.8	30.8
9-10 AM	2648	0.0	1499	1500	1148	16.31+	399	67.4	10.8	30.8
10-11 AM	3228	0.0	1500	1500	1728	16.28+	400	66.7	10.8	30.8
11AM-NOON	3525	0.0	1500	1500	2025	16.26+	400	66.4	10.8	30.8
NOON-1PM	3869	0.0	1500	1500	2369	16.17+	400	64.4	10.8	30.8
1-2 PM	3635	0.0	1500	1500	2135	16.25+	400	66.0	10.8	30.8
2-3 PM	3946	0.0	1500	1500	2446	16.14+	400	63.9	10.8	30.8
3-4 PM	3789	0.0	1500	1500	2289	16.19+	400	65.0	10.8	30.8
4-5 PM	3519	0.0	1500	1500	2019	16.26+	400	66.4	10.8	30.8
5-6 PM	3157	0.0	1500	1500	1657	16.28+	400	66.8	10.8	30.8
6-7 PM	2735	0.0	OFF	2735	0	0.24	21	67.3	62.6	62.6
7-8 PM	2360	0.0	OFF	2360	0	0.00	0	67.8	67.8	67.8
8-9 PM	2270	0.0	OFF	2270	0	0.00	0	67.9	67.9	67.9
9-10 PM	2449	0.0	OFF	2449	0	0.00	0	67.7	67.7	67.7
10-11 PM	1947	0.0	OFF	1947	0	0.00	0	68.3	68.3	68.3
11PM-MID	1622	0.0	OFF	1622	0	0.00	0	68.7	68.7	68.7

"OFF" INDICATES NO ROAD WORK (ALL LANES OPEN TO TRAFFIC)

+ INDICATES QUEUEING EXCEEDS USER-SPECIFIED MAXIMUM LIMIT

*----- SITE BREAKDOWN DELAYS -----*	
BREAKDOWN DURATION (MINS)	0
RANGE OF QUEUE DELAY - MIN (VEH-H) MAX	0.0
AV BREAKDOWNS PER DAY	0.00
AV QUEUE DELAY/DAY (VEH-H)	0.0
AV TOTAL DELAY/DAY (VEH-H)	0.0

*----- SITE ACCIDENT DELAYS -----*	
BREAKDOWN DURATION (MINS)	0
RANGE OF QUEUE DELAY - MIN (VEH-H) MAX	0
AV BREAKDOWNS PER DAY	0
AV QUEUE DELAY/DAY (VEH-H)	0
AV TOTAL DELAY/DAY (VEH-H)	0

AVERAGE ACCIDENT NUMBERS (PIA/DAY)	
MAIN ROUTE WITHOUT WORKS	0.0301
MAIN ROUTE WITH WORKS	0.0190
'DIVERSION'	0.0234
PIA: Personal Injury Accidents	
IMPACTS ON ROAD USERS	
ROAD USER COSTS PER DAY	\$146,379
CONGESTED HOURS PER DAY*	10

\*Delays Exceeding User-Specified Maximum

**IH 43/94: BECHER ST TO MITCHELL INTERCHANGE (MILWAUKEE COUNTY)**  
**OFF-PEAK DAY 2 LANE CLOSURE**  
**NO DIVERSION ROUTE (MAX QUEUE METHOD)**

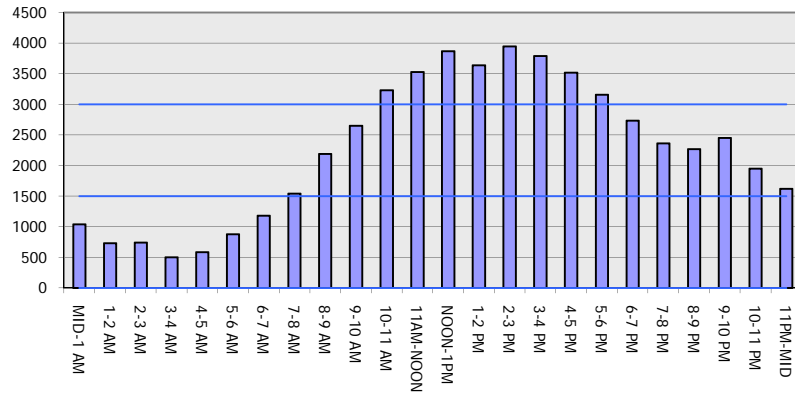
**AUGUST**

Analyzed for 2009  
 Construction Season

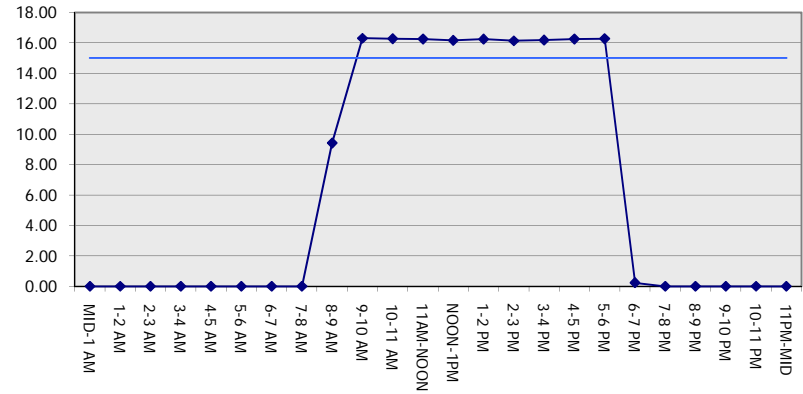
**GRAPHICAL REPRESENTATION OF TRAFFIC MODEL INPUT AND OUTPUT**

**SATURDAY WESTBOUND DIRECTION**

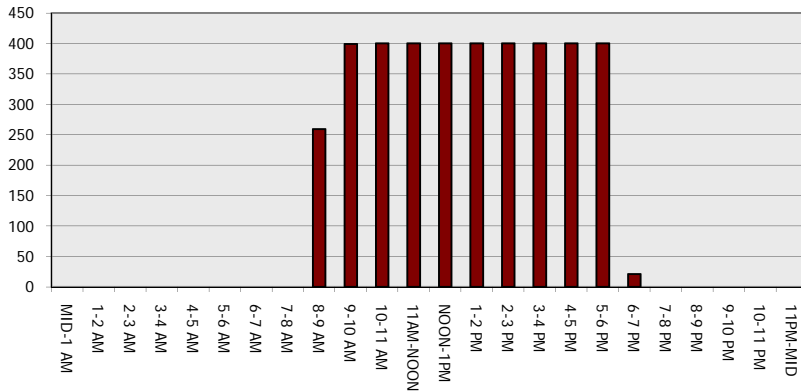
**Main Route - Traffic Demand (Vehicles Per Hour)**



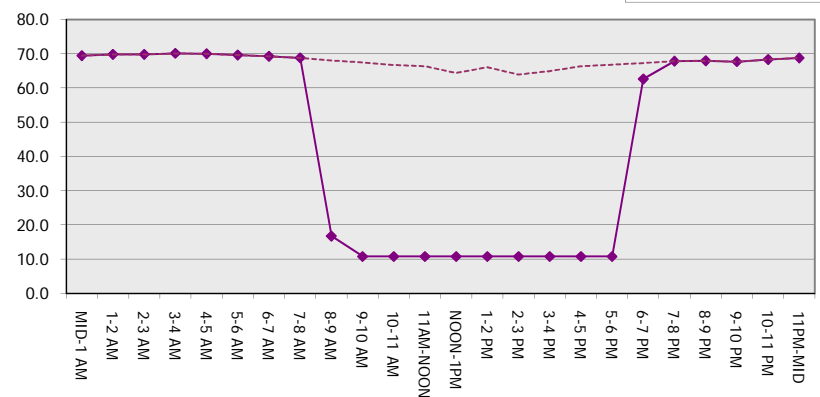
**Main Route Average Delay Per Vehicle (Minutes)**



**Main Route - Average Queue Length (Vehicles)**



**Main Route - Average Speed (MPH)**



<b>IH 43/94: BECHER ST TO MITCHELL INTERCHANGE (MILWAUKEE COUNTY)</b> <b>OFF-PEAK DAY 2 LANE CLOSURE</b> <b>NO DIVERSION ROUTE (MAX QUEUE METHOD)</b>	<b>AUGUST</b>
	Analyzed for 2009 Construction Season

**SUMMARY OF TRAFFIC MODEL OUTPUT**

SATURDAY EASTBOUND DIRECTION

TIME OF DAY	FLOWS AND CAPACITY IN VEH/HR						AVERAGE SPEEDS IN MPH			
	MAIN ROUTE		SITE CAPA CITY	FLOW		AV.DEL PER VEH (MINS)	AVERAGE QUEUE (VEH)	MAIN ROUTE		SITE
	DEMAND FLOW	PCT HEAVY		MAIN ROUTE	'DIVER TED'			WITHOUT WORK ZONE	WITH WORK ZONE	
MID-1 AM	1026	0.0	OFF	1026	0	0.00	0	69.4	69.4	69.4
1-2 AM	615	0.0	OFF	615	0	0.00	0	70.0	70.0	70.0
2-3 AM	504	0.0	OFF	504	0	0.00	0	70.1	70.1	70.1
3-4 AM	380	0.0	OFF	380	0	0.00	0	70.2	70.2	70.2
4-5 AM	390	0.0	OFF	390	0	0.00	0	70.2	70.2	70.2
5-6 AM	851	0.0	OFF	851	0	0.00	0	69.7	69.7	69.7
6-7 AM	1180	0.0	OFF	1180	0	0.00	0	69.2	69.2	69.2
7-8 AM	1478	0.0	OFF	1478	0	0.00	0	68.9	68.9	68.9
8-9 AM	2035	0.0	1499	2012	23	7.83+	228	68.2	19.3	30.8
9-10 AM	2582	0.0	1500	1430	1152	16.03+	394	67.5	11.0	31.9
10-11 AM	2894	0.0	1500	1500	1394	16.30+	400	67.1	10.8	30.8
11AM-NOON	3093	0.0	1500	1500	1593	16.29+	400	66.9	10.8	30.8
NOON-1PM	3306	0.0	1500	1500	1806	16.27+	400	66.6	10.8	30.8
1-2 PM	3467	0.0	1500	1500	1967	16.26+	400	66.4	10.8	30.8
2-3 PM	3386	0.0	1500	1500	1886	16.27+	400	66.5	10.8	30.8
3-4 PM	3519	0.0	1500	1500	2019	16.26+	400	66.4	10.8	30.8
4-5 PM	3397	0.0	1500	1500	1897	16.27+	400	66.5	10.8	30.8
5-6 PM	3472	0.0	1500	1500	1972	16.26+	400	66.4	10.8	30.8
6-7 PM	3014	0.0	OFF	3014	0	0.35	32	67.0	60.2	60.2
7-8 PM	2736	0.0	OFF	2736	0	0.00	0	67.3	67.3	67.3
8-9 PM	2391	0.0	OFF	2391	0	0.00	0	67.8	67.8	67.8
9-10 PM	2266	0.0	OFF	2266	0	0.00	0	67.9	67.9	67.9
10-11 PM	1873	0.0	OFF	1873	0	0.00	0	68.4	68.4	68.4
11PM-MID	1381	0.0	OFF	1381	0	0.00	0	69.0	69.0	69.0

"OFF" INDICATES NO ROAD WORK (ALL LANES OPEN TO TRAFFIC)

+ INDICATES QUEUEING EXCEEDS USER-SPECIFIED MAXIMUM LIMIT

*----- SITE BREAKDOWN DELAYS -----*	
BREAKDOWN DURATION (MINS)	0
RANGE OF QUEUE DELAY - MIN (VEH-H) MAX	0.0
AV BREAKDOWNS PER DAY	0.00
AV QUEUE DELAY/DAY (VEH-H)	0.0
AV TOTAL DELAY/DAY (VEH-H)	0.0

*----- SITE ACCIDENT DELAYS -----*	
BREAKDOWN DURATION (MINS)	0
RANGE OF QUEUE DELAY - MIN (VEH-H) MAX	0
AV BREAKDOWNS PER DAY	0
AV QUEUE DELAY/DAY (VEH-H)	0
AV TOTAL DELAY/DAY (VEH-H)	0

AVERAGE ACCIDENT NUMBERS (PIA/DAY)	
MAIN ROUTE WITHOUT WORKS	0.0285
MAIN ROUTE WITH WORKS	0.0188
'DIVERSION'	0.0203

PIA: Personal Injury Accidents

ECONOMIC IMPACT ON ROAD USERS	
ROAD USER COSTS PER DAY	\$135,472
CONGESTED HOURS PER DAY*	10

\*Delays Exceeding User-Specified Maximum

**IH 43/94: BECHER ST TO MITCHELL INTERCHANGE (MILWAUKEE COUNTY)**  
**OFF-PEAK DAY 2 LANE CLOSURE**  
**NO DIVERSION ROUTE (MAX QUEUE METHOD)**

**AUGUST**  
 Analyzed for 2009  
 Construction Season

**GRAPHICAL REPRESENTATION OF TRAFFIC MODEL INPUT AND OUTPUT**  
**SATURDAY EASTBOUND DIRECTION**

