

IH 43/94: BECHER ST TO MITCHELL INTERCHANGE (MILWAUKEE COUNTY) OFF-PEAK DAY CLOSURE NO DIVERSION ROUTE (MAX QUEUE METHOD)	AUGUST
	Analyzed for 2009 Construction Season

SUMMARY OF TRAFFIC MODEL OUTPUT

SATURDAY WESTBOUND DIRECTION

TIME OF DAY	FLOWS AND CAPACITY IN VEH/HR						AVERAGE SPEEDS IN MPH			
	MAIN ROUTE		SITE CAPA CITY	FLOW		AV.DEL PER VEH (MINS)	AVERAGE QUEUE (VEH)	MAIN ROUTE		SITE
	DEMAND FLOW	PCT HEAVY		MAIN ROUTE	'DIVER TED'			WITHOUT WORK ZONE	WITH WORK ZONE	
MID-1 AM	1040	0.0	OFF	1040	0	0.00	0	69.4	69.4	69.4
1-2 AM	729	0.0	OFF	729	0	0.00	0	69.8	69.8	69.8
2-3 AM	742	0.0	OFF	742	0	0.00	0	69.8	69.8	69.8
3-4 AM	499	0.0	OFF	499	0	0.00	0	70.1	70.1	70.1
4-5 AM	587	0.0	OFF	587	0	0.00	0	70.0	70.0	70.0
5-6 AM	877	0.0	OFF	877	0	0.00	0	69.6	69.6	69.6
6-7 AM	1179	0.0	OFF	1179	0	0.00	0	69.2	69.2	69.2
7-8 AM	1540	0.0	OFF	1540	0	0.00	0	68.8	68.8	68.8
8-9 AM	2187	0.0	3000	2187	0	0.33	0	68.0	61.4	49.7
9-10 AM	2648	0.0	2999	2648	0	0.50	0	67.4	58.2	43.7
10-11 AM	3228	0.0	2999	3228	0	2.09	86	66.7	40.1	37.3
11AM-NOON	3525	0.0	3000	3525	0	8.72	470	66.4	17.8	37.3
NOON-1PM	3869	0.0	2999	3045	825	15.80+	838	64.4	12.3	37.3
1-2 PM	3635	0.0	3000	3007	627	15.81+	834	66.0	12.3	37.3
2-3 PM	3946	0.0	3000	3012	934	15.72+	835	63.9	12.3	37.3
3-4 PM	3789	0.0	3000	3004	786	15.76+	834	65.0	12.3	37.3
4-5 PM	3519	0.0	3000	3003	517	15.82+	833	66.4	12.3	37.3
5-6 PM	3157	0.0	3000	3002	155	15.82+	832	66.8	12.3	37.3
6-7 PM	2735	0.0	OFF	2735	0	1.09	104	67.3	49.9	49.9
7-8 PM	2360	0.0	OFF	2360	0	0.00	0	67.8	67.8	67.8
8-9 PM	2270	0.0	OFF	2270	0	0.00	0	67.9	67.9	67.9
9-10 PM	2449	0.0	OFF	2449	0	0.00	0	67.7	67.7	67.7
10-11 PM	1947	0.0	OFF	1947	0	0.00	0	68.3	68.3	68.3
11PM-MID	1622	0.0	OFF	1622	0	0.00	0	68.7	68.7	68.7

"OFF" INDICATES NO ROAD WORK (ALL LANES OPEN TO TRAFFIC)

+ INDICATES QUEUEING EXCEEDS USER-SPECIFIED MAXIMUM LIMIT

----- SITE BREAKDOWN DELAYS -----	
BREAKDOWN DURATION (MINS)	0
RANGE OF QUEUE DELAY - MIN (VEH-H) MAX	0.0
AV BREAKDOWNS PER DAY	0.00
AV QUEUE DELAY/DAY (VEH-H)	0.0
AV TOTAL DELAY/DAY (VEH-H)	0.0

----- SITE ACCIDENT DELAYS -----	
BREAKDOWN DURATION (MINS)	0
RANGE OF QUEUE DELAY - MIN (VEH-H) MAX	0
AV BREAKDOWNS PER DAY	0
AV QUEUE DELAY/DAY (VEH-H)	0
AV TOTAL DELAY/DAY (VEH-H)	0

AVERAGE ACCIDENT NUMBERS (PIA/DAY)	
MAIN ROUTE WITHOUT WORKS	0.0301
MAIN ROUTE WITH WORKS	0.0260
'DIVERSION'	0.0050
PIA: Personal Injury Accidents	
IMPACTS ON ROAD USERS	
ROAD USER COSTS PER DAY	\$103,911
CONGESTED HOURS PER DAY*	6

*Delays Exceeding User-Specified Maximum

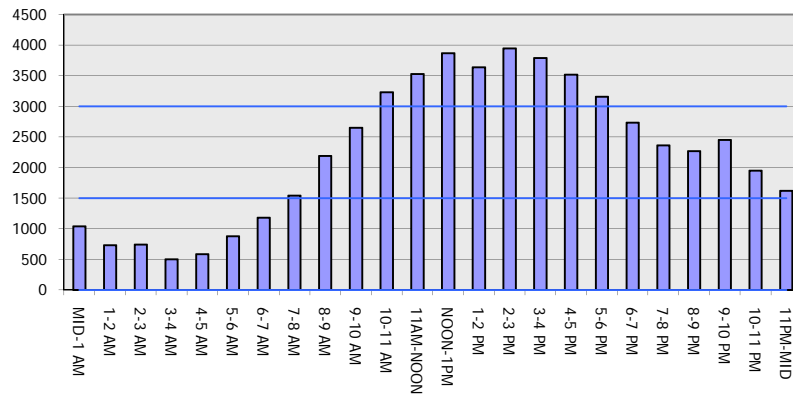
IH 43/94: BECHER ST TO MITCHELL INTERCHANGE (MILWAUKEE COUNTY)
OFF-PEAK DAY CLOSURE
NO DIVERSION ROUTE (MAX QUEUE METHOD)

AUGUST

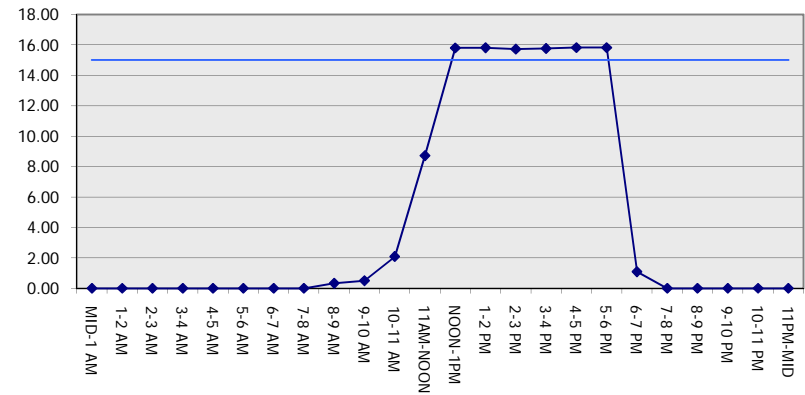
Analyzed for 2009
 Construction Season

GRAPHICAL REPRESENTATION OF TRAFFIC MODEL INPUT AND OUTPUT
SATURDAY WESTBOUND DIRECTION

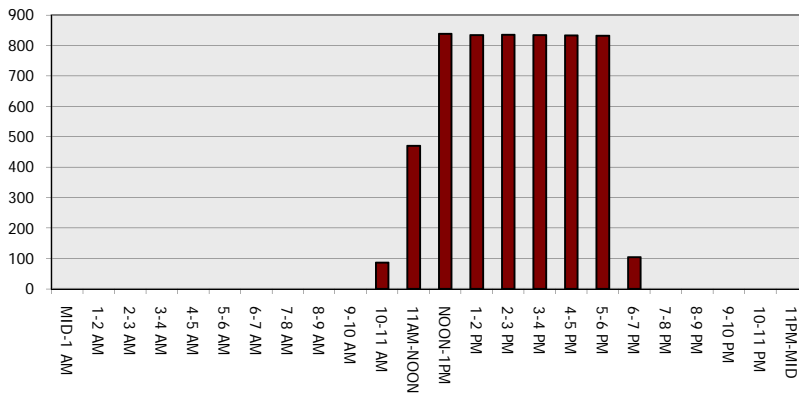
Main Route - Traffic Demand (Vehicles Per Hour)



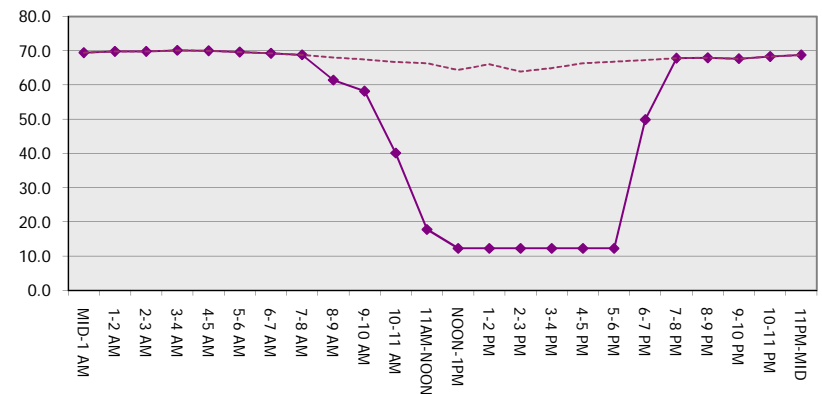
Main Route Average Delay Per Vehicle (Minutes)



Main Route - Average Queue Length (Vehicles)



Main Route - Average Speed (MPH)



IH 43/94: BECHER ST TO MITCHELL INTERCHANGE (MILWAUKEE COUNTY) OFF-PEAK DAY CLOSURE NO DIVERSION ROUTE (MAX QUEUE METHOD)	AUGUST
	Analyzed for 2009 Construction Season

SUMMARY OF TRAFFIC MODEL OUTPUT

SATURDAY EASTBOUND DIRECTION

TIME OF DAY	FLOWS AND CAPACITY IN VEH/HR							AVERAGE SPEEDS IN MPH		
	MAIN ROUTE		SITE CAPA CITY	FLOW		AV.DEL PER VEH (MINS)	AVERAGE QUEUE (VEH)	MAIN ROUTE		SITE
	DEMAND FLOW	PCT HEAVY		MAIN ROUTE	'DIVER TED'			WITHOUT WORK ZONE	WITH WORK ZONE	
MID-1 AM	1026	0.0	OFF	1026	0	0.00	0	69.4	69.4	69.4
1-2 AM	615	0.0	OFF	615	0	0.00	0	70.0	70.0	70.0
2-3 AM	504	0.0	OFF	504	0	0.00	0	70.1	70.1	70.1
3-4 AM	380	0.0	OFF	380	0	0.00	0	70.2	70.2	70.2
4-5 AM	390	0.0	OFF	390	0	0.00	0	70.2	70.2	70.2
5-6 AM	851	0.0	OFF	851	0	0.00	0	69.7	69.7	69.7
6-7 AM	1180	0.0	OFF	1180	0	0.00	0	69.2	69.2	69.2
7-8 AM	1478	0.0	OFF	1478	0	0.00	0	68.9	68.9	68.9
8-9 AM	2035	0.0	3000	2035	0	0.33	0	68.2	61.5	49.7
9-10 AM	2582	0.0	3000	2582	0	0.46	0	67.5	58.9	44.9
10-11 AM	2894	0.0	2999	2894	0	0.66	0	67.1	55.5	39.0
11AM-NOON	3093	0.0	2999	3093	0	1.30	33	66.9	47.3	37.3
NOON-1PM	3306	0.0	3000	3306	0	4.72	234	66.6	26.7	37.3
1-2 PM	3467	0.0	3000	3467	0	11.85+	630	66.4	14.5	37.3
2-3 PM	3386	0.0	2999	2993	392	15.82+	833	66.5	12.3	37.3
3-4 PM	3519	0.0	2999	2995	525	15.82+	833	66.4	12.3	37.3
4-5 PM	3397	0.0	2999	2996	401	15.82+	833	66.5	12.3	37.3
5-6 PM	3472	0.0	2999	2997	475	15.82+	833	66.4	12.3	37.3
6-7 PM	3014	0.0	OFF	3014	0	1.32	120	67.0	47.1	47.1
7-8 PM	2736	0.0	OFF	2736	0	0.00	0	67.3	67.3	67.3
8-9 PM	2391	0.0	OFF	2391	0	0.00	0	67.8	67.8	67.8
9-10 PM	2266	0.0	OFF	2266	0	0.00	0	67.9	67.9	67.9
10-11 PM	1873	0.0	OFF	1873	0	0.00	0	68.4	68.4	68.4
11PM-MID	1381	0.0	OFF	1381	0	0.00	0	69.0	69.0	69.0

"OFF" INDICATES NO ROAD WORK (ALL LANES OPEN TO TRAFFIC)

+ INDICATES QUEUEING EXCEEDS USER-SPECIFIED MAXIMUM LIMIT

----- SITE BREAKDOWN DELAYS -----	
BREAKDOWN DURATION (MINS)	0
RANGE OF QUEUE DELAY - MIN (VEH-H) MAX	0.0
AV BREAKDOWNS PER DAY	0.00
AV QUEUE DELAY/DAY (VEH-H)	0.0
AV TOTAL DELAY/DAY (VEH-H)	0.0

----- SITE ACCIDENT DELAYS -----	
BREAKDOWN DURATION (MINS)	0
RANGE OF QUEUE DELAY - MIN (VEH-H) MAX	0
AV BREAKDOWNS PER DAY	0
AV QUEUE DELAY/DAY (VEH-H)	0
AV TOTAL DELAY/DAY (VEH-H)	0

AVERAGE ACCIDENT NUMBERS (PIA/DAY)	
MAIN ROUTE WITHOUT WORKS	0.0285
MAIN ROUTE WITH WORKS	0.0256
'DIVERSION'	0.0023

PIA: Personal Injury Accidents

ECONOMIC IMPACT ON ROAD USERS	
ROAD USER COSTS PER DAY	\$76,598
CONGESTED HOURS PER DAY*	5

*Delays Exceeding User-Specified Maximum

IH 43/94: BECHER ST TO MITCHELL INTERCHANGE (MILWAUKEE COUNTY)
OFF-PEAK DAY CLOSURE
NO DIVERSION ROUTE (MAX QUEUE METHOD)

AUGUST
 Analyzed for 2009
 Construction Season

GRAPHICAL REPRESENTATION OF TRAFFIC MODEL INPUT AND OUTPUT
SATURDAY EASTBOUND DIRECTION

