

IH 43/94: BECHER ST TO MITCHELL INTERCHANGE (MILWAUKEE COUNTY) OFF-PEAK DAY 2 LANE CLOSURE NO DIVERSION ROUTE (MAX QUEUE METHOD)	AUGUST
	Analyzed for 2009 Construction Season

SUMMARY OF TRAFFIC MODEL OUTPUT

MON-THUR WESTBOUND DIRECTION

TIME OF DAY	FLOWS AND CAPACITY IN VEH/HR						AVERAGE SPEEDS IN MPH				
	MAIN ROUTE		SITE CAPA CITY	FLOW		AV.DEL PER VEH (MINS)	AVERAGE QUEUE (VEH)	MAIN ROUTE		SITE	
	DEMAND FLOW	PCT HEAVY		MAIN ROUTE	'DIVER TED'			WITHOUT WORK ZONE	WITH WORK ZONE		
MID-1 AM	736	0.0	OFF	736	0	0.00	0	69.8	69.8	69.8	
1-2 AM	489	0.0	OFF	489	0	0.00	0	70.1	70.1	70.1	
2-3 AM	407	0.0	OFF	407	0	0.00	0	70.2	70.2	70.2	
3-4 AM	399	0.0	OFF	399	0	0.00	0	70.2	70.2	70.2	
4-5 AM	818	0.0	OFF	818	0	0.00	0	69.7	69.7	69.7	
5-6 AM	1802	0.0	OFF	1802	0	0.00	0	68.5	68.5	68.5	
6-7 AM	2778	0.0	OFF	2778	0	0.00	0	67.3	67.3	67.3	
7-8 AM	3210	0.0	OFF	3210	0	0.00	0	66.8	66.8	66.8	
8-9 AM	2879	0.0	OFF	2879	0	0.00	0	67.1	67.1	67.1	
9-10 AM	2820	0.0	OFF	2820	0	0.00	0	67.3	67.3	67.3	
10-11 AM	2803	0.0	1499	1762	1041	13.77+	345	67.3	12.4	35.4	
11AM-NOON	3045	0.0	1499	1518	1527	16.03+	398	66.9	10.9	34.4	
NOON-1PM	3365	0.0	1500	1500	1865	16.06+	400	66.6	10.9	34.6	
1-2 PM	3330	0.0	1500	1500	1830	16.06+	400	66.6	10.9	34.6	
2-3 PM	4271	0.0	1500	1500	2771	15.81+	400	61.7	10.9	34.6	
3-4 PM	5255	0.0	OFF	5255	0	0.66	52	55.0	46.8	46.8	
4-5 PM	5702	0.0	OFF	5702	0	0.00	0	51.9	51.9	51.9	
5-6 PM	5576	0.0	OFF	5576	0	0.00	0	52.8	52.8	52.8	
6-7 PM	3799	0.0	OFF	3799	0	0.00	0	64.9	64.9	64.9	
7-8 PM	2677	0.0	OFF	2677	0	0.00	0	67.4	67.4	67.4	
8-9 PM	2126	0.0	OFF	2126	0	0.00	0	68.1	68.1	68.1	
9-10 PM	1984	0.0	OFF	1984	0	0.00	0	68.2	68.2	68.2	
10-11 PM	1785	0.0	OFF	1785	0	0.00	0	68.5	68.5	68.5	
11PM-MID	1202	0.0	OFF	1202	0	0.00	0	69.2	69.2	69.2	

"OFF" INDICATES NO ROAD WORK (ALL LANES OPEN TO TRAFFIC)

+ INDICATES QUEUEING EXCEEDS USER-SPECIFIED MAXIMUM LIMIT

----- SITE BREAKDOWN DELAYS -----	
BREAKDOWN DURATION (MINS)	0
RANGE OF QUEUE DELAY - MIN (VEH-H) MAX	0.0
AV BREAKDOWNS PER DAY	0.00
AV QUEUE DELAY/DAY (VEH-H)	0.0
AV TOTAL DELAY/DAY (VEH-H)	0.0

----- SITE ACCIDENT DELAYS -----	
BREAKDOWN DURATION (MINS)	0
RANGE OF QUEUE DELAY - MIN (VEH-H) MAX	0
AV BREAKDOWNS PER DAY	0
AV QUEUE DELAY/DAY (VEH-H)	0
AV TOTAL DELAY/DAY (VEH-H)	0

AVERAGE ACCIDENT NUMBERS (PIA/DAY)	
MAIN ROUTE WITHOUT WORKS	0.0352
MAIN ROUTE WITH WORKS	0.0297
'DIVERSION'	0.0116
PIA: Personal Injury Accidents	
IMPACTS ON ROAD USERS	
ROAD USER COSTS PER DAY	\$57,366
CONGESTED HOURS PER DAY*	5

*Delays Exceeding User-Specified Maximum

IH 43/94: BECHER ST TO MITCHELL INTERCHANGE (MILWAUKEE COUNTY)
OFF-PEAK DAY 2 LANE CLOSURE
NO DIVERSION ROUTE (MAX QUEUE METHOD)

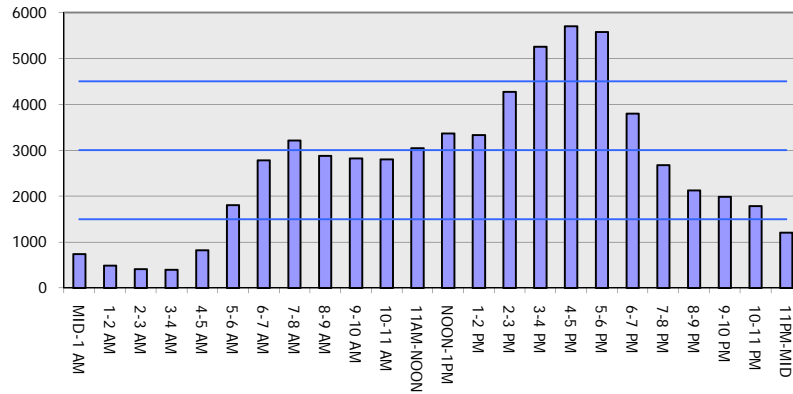
AUGUST

Analyzed for 2009
 Construction Season

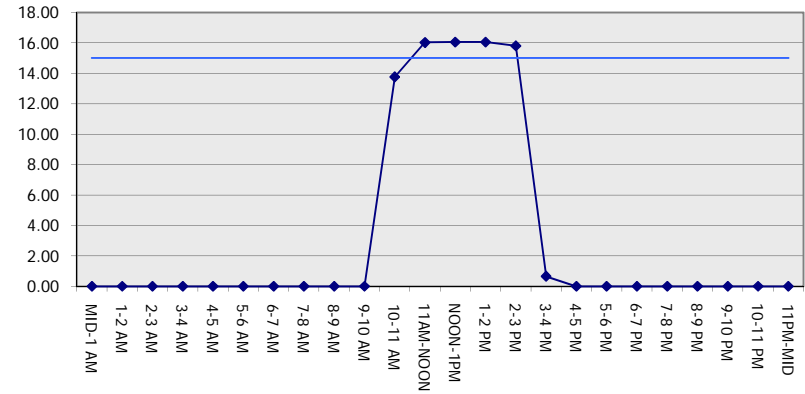
GRAPHICAL REPRESENTATION OF TRAFFIC MODEL INPUT AND OUTPUT

MON-THUR WESTBOUND DIRECTION

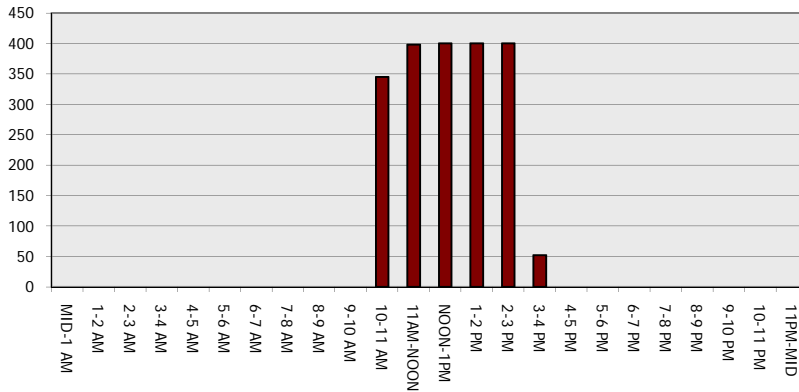
Main Route - Traffic Demand (Vehicles Per Hour)



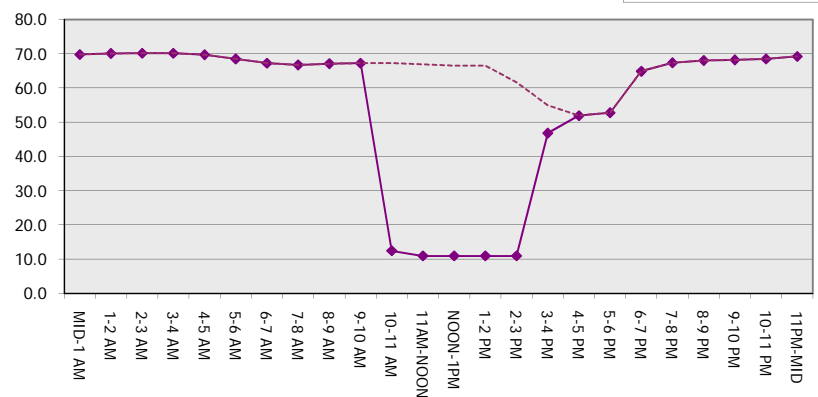
Main Route Average Delay Per Vehicle (Minutes)



Main Route - Average Queue Length (Vehicles)



Main Route - Average Speed (MPH)



IH 43/94: BECHER ST TO MITCHELL INTERCHANGE (MILWAUKEE COUNTY) OFF-PEAK DAY 2 LANE CLOSURE NO DIVERSION ROUTE (MAX QUEUE METHOD)	AUGUST
	Analyzed for 2009 Construction Season

SUMMARY OF TRAFFIC MODEL OUTPUT

MON-THUR EASTBOUND DIRECTION

TIME OF DAY	FLOWS AND CAPACITY IN VEH/HR						AVERAGE SPEEDS IN MPH			
	MAIN ROUTE		SITE CAPA CITY	FLOW		AV.DEL PER VEH (MINS)	AVERAGE QUEUE (VEH)	MAIN ROUTE		SITE
	DEMAND FLOW	PCT HEAVY		MAIN ROUTE	'DIVER TED'			WITHOUT WORK ZONE	WITH WORK ZONE	
MID-1 AM	681	0.0	OFF	681	0	0.00	0	69.9	69.9	69.9
1-2 AM	372	0.0	OFF	372	0	0.00	0	70.2	70.2	70.2
2-3 AM	323	0.0	OFF	323	0	0.00	0	70.2	70.2	70.2
3-4 AM	326	0.0	OFF	326	0	0.00	0	70.2	70.2	70.2
4-5 AM	562	0.0	OFF	562	0	0.00	0	70.0	70.0	70.0
5-6 AM	1884	0.0	OFF	1884	0	0.00	0	68.4	68.4	68.4
6-7 AM	4070	0.0	OFF	4070	0	0.00	0	63.0	63.0	63.0
7-8 AM	5104	0.0	OFF	5104	0	0.00	0	56.0	56.0	56.0
8-9 AM	4352	0.0	OFF	4352	0	0.00	0	61.1	61.1	61.1
9-10 AM	2994	0.0	OFF	2994	0	0.00	0	67.0	67.0	67.0
10-11 AM	2728	0.0	1499	1788	939	13.60+	340	67.3	12.5	35.2
11AM-NOON	2923	0.0	1499	1500	1423	16.12+	399	67.1	10.9	33.9
NOON-1PM	2929	0.0	1500	1500	1429	16.12+	400	67.1	10.9	33.9
1-2 PM	2813	0.0	1500	1500	1313	16.13+	400	67.3	10.9	33.9
2-3 PM	3093	0.0	1500	1500	1593	16.11+	400	66.9	10.9	33.9
3-4 PM	3232	0.0	OFF	3232	0	0.17	15	66.7	63.3	63.3
4-5 PM	3350	0.0	OFF	3350	0	0.00	0	66.6	66.6	66.6
5-6 PM	3392	0.0	OFF	3392	0	0.00	0	66.5	66.5	66.5
6-7 PM	2722	0.0	OFF	2722	0	0.00	0	67.4	67.4	67.4
7-8 PM	2193	0.0	OFF	2193	0	0.00	0	68.0	68.0	68.0
8-9 PM	1846	0.0	OFF	1846	0	0.00	0	68.4	68.4	68.4
9-10 PM	1792	0.0	OFF	1792	0	0.00	0	68.5	68.5	68.5
10-11 PM	1468	0.0	OFF	1468	0	0.00	0	68.9	68.9	68.9
11PM-MID	1061	0.0	OFF	1061	0	0.00	0	69.4	69.4	69.4

"OFF" INDICATES NO ROAD WORK (ALL LANES OPEN TO TRAFFIC)

+ INDICATES QUEUEING EXCEEDS USER-SPECIFIED MAXIMUM LIMIT

----- SITE BREAKDOWN DELAYS -----	
BREAKDOWN DURATION (MINS)	0
RANGE OF QUEUE DELAY - MIN	0.0
(VEH-H) MAX	0.0
AV BREAKDOWNS PER DAY	0.00
AV QUEUE DELAY/DAY (VEH-H)	0.0
AV TOTAL DELAY/DAY (VEH-H)	0.0

----- SITE ACCIDENT DELAYS -----	
BREAKDOWN DURATION (MINS)	0
RANGE OF QUEUE DELAY - MIN	0
(VEH-H) MAX	0
AV BREAKDOWNS PER DAY	0
AV QUEUE DELAY/DAY (VEH-H)	0
AV TOTAL DELAY/DAY (VEH-H)	0

AVERAGE ACCIDENT NUMBERS (PIA/DAY)	
MAIN ROUTE WITHOUT WORKS	0.0313
MAIN ROUTE WITH WORKS	0.0271
'DIVERSION'	0.0086

PIA: Personal Injury Accidents

ECONOMIC IMPACT ON ROAD USERS	
ROAD USER COSTS PER DAY	\$49,010
CONGESTED HOURS PER DAY*	5

*Delays Exceeding User-Specified Maximum

IH 43/94: BECHER ST TO MITCHELL INTERCHANGE (MILWAUKEE COUNTY)
OFF-PEAK DAY 2 LANE CLOSURE
NO DIVERSION ROUTE (MAX QUEUE METHOD)

AUGUST
 Analyzed for 2009
 Construction Season

GRAPHICAL REPRESENTATION OF TRAFFIC MODEL INPUT AND OUTPUT
MON-THUR EASTBOUND DIRECTION

