

<b>IH 43/94: BECHER ST TO MITCHELL INTERCHANGE (MILWAUKEE COUNTY)</b> <b>OFF-PEAK DAY CLOSURE</b> <b>NO DIVERSION ROUTE (MAX QUEUE METHOD)</b>	<b>AUGUST</b>
	Analyzed for 2009 Construction Season

**SUMMARY OF TRAFFIC MODEL OUTPUT**

MON-THUR                  WESTBOUND DIRECTION

TIME OF DAY	FLOWS AND CAPACITY IN VEH/HR						AVERAGE SPEEDS IN MPH				
	MAIN ROUTE		SITE CAPA CITY	FLOW		AV.DEL PER VEH (MINS)	AVERAGE QUEUE (VEH)	MAIN ROUTE		SITE	
	DEMAND FLOW	PCT HEAVY		MAIN ROUTE	'DIVER TED'			WITHOUT WORK ZONE	WITH WORK ZONE		
MID-1 AM	736	0.0	OFF	736	0	0.00	0	69.8	69.8	69.8	
1-2 AM	489	0.0	OFF	489	0	0.00	0	70.1	70.1	70.1	
2-3 AM	407	0.0	OFF	407	0	0.00	0	70.2	70.2	70.2	
3-4 AM	399	0.0	OFF	399	0	0.00	0	70.2	70.2	70.2	
4-5 AM	818	0.0	OFF	818	0	0.00	0	69.7	69.7	69.7	
5-6 AM	1802	0.0	OFF	1802	0	0.00	0	68.5	68.5	68.5	
6-7 AM	2778	0.0	OFF	2778	0	0.00	0	67.3	67.3	67.3	
7-8 AM	3210	0.0	OFF	3210	0	0.00	0	66.8	66.8	66.8	
8-9 AM	2879	0.0	OFF	2879	0	0.00	0	67.1	67.1	67.1	
9-10 AM	2820	0.0	OFF	2820	0	0.00	0	67.3	67.3	67.3	
10-11 AM	2803	0.0	2999	2803	0	0.60	0	67.3	56.4	40.5	
11AM-NOON	3045	0.0	2999	3045	0	0.96	14	66.9	51.2	37.4	
NOON-1PM	3365	0.0	3000	3365	0	4.54	231	66.6	27.3	37.3	
1-2 PM	3330	0.0	2999	3330	0	10.68	559	66.6	15.3	37.3	
2-3 PM	4271	0.0	2999	3078	1193	15.75+	845	61.7	12.2	37.3	
3-4 PM	5255	0.0	OFF	5255	0	4.97	458	55.0	23.8	23.8	
4-5 PM	5702	0.0	OFF	5702	0	0.17	12	51.9	49.8	49.8	
5-6 PM	5576	0.0	OFF	5576	0	0.00	0	52.8	52.8	52.8	
6-7 PM	3799	0.0	OFF	3799	0	0.00	0	64.9	64.9	64.9	
7-8 PM	2677	0.0	OFF	2677	0	0.00	0	67.4	67.4	67.4	
8-9 PM	2126	0.0	OFF	2126	0	0.00	0	68.1	68.1	68.1	
9-10 PM	1984	0.0	OFF	1984	0	0.00	0	68.2	68.2	68.2	
10-11 PM	1785	0.0	OFF	1785	0	0.00	0	68.5	68.5	68.5	
11PM-MID	1202	0.0	OFF	1202	0	0.00	0	69.2	69.2	69.2	

"OFF" INDICATES NO ROAD WORK (ALL LANES OPEN TO TRAFFIC)

+ INDICATES QUEUEING EXCEEDS USER-SPECIFIED MAXIMUM LIMIT

*----- SITE BREAKDOWN DELAYS -----*	
BREAKDOWN DURATION (MINS)	0
RANGE OF QUEUE DELAY - MIN (VEH-H) MAX	0.0
AV BREAKDOWNS PER DAY	0.00
AV QUEUE DELAY/DAY (VEH-H)	0.0
AV TOTAL DELAY/DAY (VEH-H)	0.0

*----- SITE ACCIDENT DELAYS -----*	
BREAKDOWN DURATION (MINS)	0
RANGE OF QUEUE DELAY - MIN (VEH-H) MAX	0
AV BREAKDOWNS PER DAY	0
AV QUEUE DELAY/DAY (VEH-H)	0
AV TOTAL DELAY/DAY (VEH-H)	0

AVERAGE ACCIDENT NUMBERS (PIA/DAY)	
MAIN ROUTE WITHOUT WORKS	0.0352
MAIN ROUTE WITH WORKS	0.0335
'DIVERSION'	0.0015
PIA: Personal Injury Accidents	
IMPACTS ON ROAD USERS	
ROAD USER COSTS PER DAY	\$25,938
CONGESTED HOURS PER DAY*	1

\*Delays Exceeding User-Specified Maximum

**IH 43/94: BECHER ST TO MITCHELL INTERCHANGE (MILWAUKEE COUNTY)**  
**OFF-PEAK DAY CLOSURE**  
**NO DIVERSION ROUTE (MAX QUEUE METHOD)**

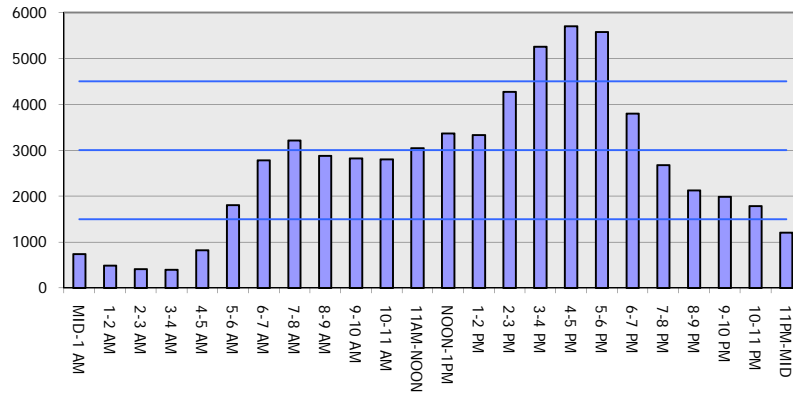
**AUGUST**

Analyzed for 2009  
 Construction Season

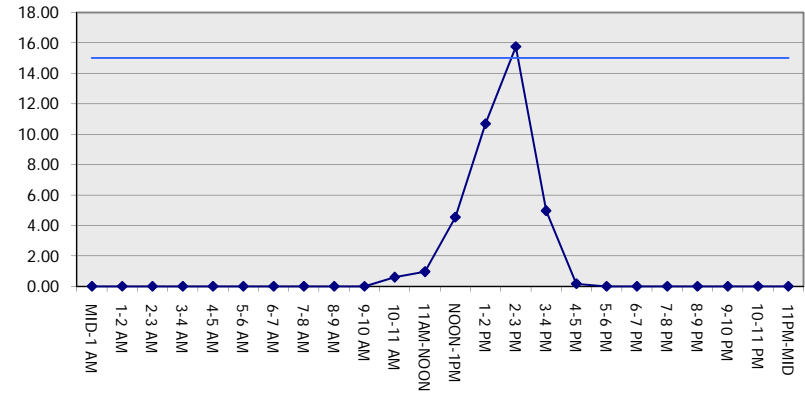
**GRAPHICAL REPRESENTATION OF TRAFFIC MODEL INPUT AND OUTPUT**

**MON-THUR WESTBOUND DIRECTION**

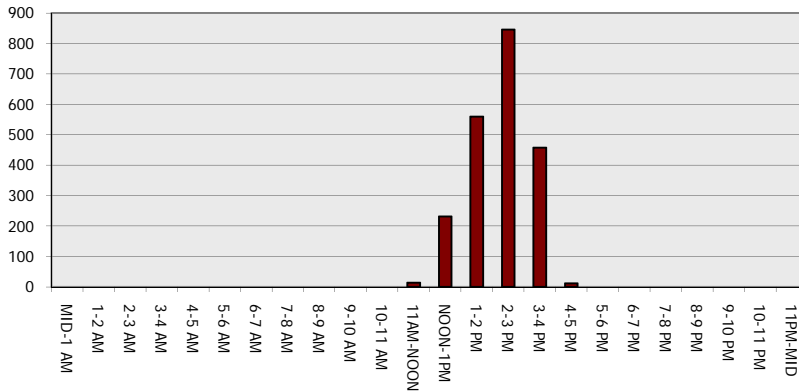
**Main Route - Traffic Demand (Vehicles Per Hour)**



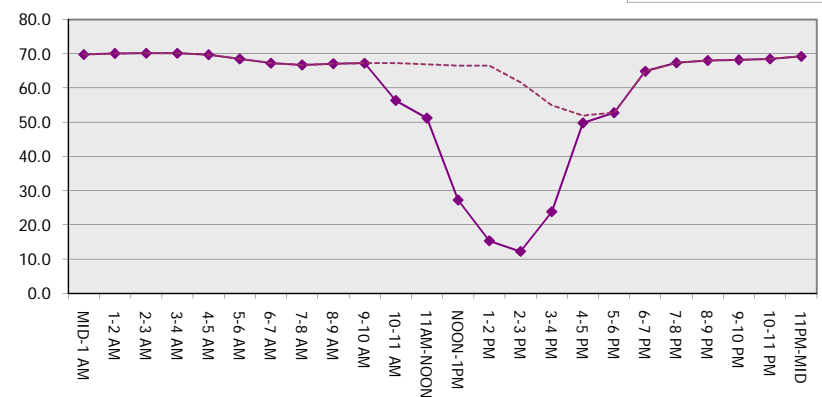
**Main Route Average Delay Per Vehicle (Minutes)**



**Main Route - Average Queue Length (Vehicles)**



**Main Route - Average Speed (MPH)**



<b>IH 43/94: BECHER ST TO MITCHELL INTERCHANGE (MILWAUKEE COUNTY)</b> <b>OFF-PEAK DAY CLOSURE</b> <b>NO DIVERSION ROUTE (MAX QUEUE METHOD)</b>	<b>AUGUST</b>
	Analyzed for 2009 Construction Season

**SUMMARY OF TRAFFIC MODEL OUTPUT**

MON-THUR                      EASTBOUND DIRECTION

TIME OF DAY	FLOWS AND CAPACITY IN VEH/HR						AVERAGE SPEEDS IN MPH			
	MAIN ROUTE		SITE CAPA CITY	FLOW		AV.DEL PER VEH (MINS)	AVERAGE QUEUE (VEH)	MAIN ROUTE		SITE
	DEMAND FLOW	PCT HEAVY		MAIN ROUTE	'DIVER TED'			WITHOUT WORK ZONE	WITH WORK ZONE	
MID-1 AM	681	0.0	OFF	681	0	0.00	0	69.9	69.9	69.9
1-2 AM	372	0.0	OFF	372	0	0.00	0	70.2	70.2	70.2
2-3 AM	323	0.0	OFF	323	0	0.00	0	70.2	70.2	70.2
3-4 AM	326	0.0	OFF	326	0	0.00	0	70.2	70.2	70.2
4-5 AM	562	0.0	OFF	562	0	0.00	0	70.0	70.0	70.0
5-6 AM	1884	0.0	OFF	1884	0	0.00	0	68.4	68.4	68.4
6-7 AM	4070	0.0	OFF	4070	0	0.00	0	63.0	63.0	63.0
7-8 AM	5104	0.0	OFF	5104	0	0.00	0	56.0	56.0	56.0
8-9 AM	4352	0.0	OFF	4352	0	0.00	0	61.1	61.1	61.1
9-10 AM	2994	0.0	OFF	2994	0	0.00	0	67.0	67.0	67.0
10-11 AM	2728	0.0	3000	2728	0	0.55	0	67.3	57.2	41.9
11AM-NOON	2923	0.0	3000	2923	0	0.68	0	67.1	55.1	38.4
NOON-1PM	2929	0.0	3000	2929	0	0.68	0	67.1	55.1	38.4
1-2 PM	2813	0.0	2999	2813	0	0.61	0	67.3	56.3	40.3
2-3 PM	3093	0.0	2999	3093	0	1.29	33	66.9	47.4	37.3
3-4 PM	3232	0.0	OFF	3232	0	0.02	1	66.7	66.3	66.3
4-5 PM	3350	0.0	OFF	3350	0	0.00	0	66.6	66.6	66.6
5-6 PM	3392	0.0	OFF	3392	0	0.00	0	66.5	66.5	66.5
6-7 PM	2722	0.0	OFF	2722	0	0.00	0	67.4	67.4	67.4
7-8 PM	2193	0.0	OFF	2193	0	0.00	0	68.0	68.0	68.0
8-9 PM	1846	0.0	OFF	1846	0	0.00	0	68.4	68.4	68.4
9-10 PM	1792	0.0	OFF	1792	0	0.00	0	68.5	68.5	68.5
10-11 PM	1468	0.0	OFF	1468	0	0.00	0	68.9	68.9	68.9
11PM-MID	1061	0.0	OFF	1061	0	0.00	0	69.4	69.4	69.4

"OFF" INDICATES NO ROAD WORK (ALL LANES OPEN TO TRAFFIC)

*----- SITE BREAKDOWN DELAYS -----*	
BREAKDOWN DURATION (MINS)	0
RANGE OF QUEUE DELAY - MIN (VEH-H) MAX	0.0
AV BREAKDOWNS PER DAY	0.00
AV QUEUE DELAY/DAY (VEH-H)	0.0
AV TOTAL DELAY/DAY (VEH-H)	0.0

*----- SITE ACCIDENT DELAYS -----*	
BREAKDOWN DURATION (MINS)	0
RANGE OF QUEUE DELAY - MIN (VEH-H) MAX	0
AV BREAKDOWNS PER DAY	0
AV QUEUE DELAY/DAY (VEH-H)	0
AV TOTAL DELAY/DAY (VEH-H)	0

AVERAGE ACCIDENT NUMBERS (PIA/DAY)	
MAIN ROUTE WITHOUT WORKS	0.0313
MAIN ROUTE WITH WORKS	0.0303
'DIVERSION'	0.0000

PIA: Personal Injury Accidents

ECONOMIC IMPACT ON ROAD USERS	
ROAD USER COSTS PER DAY	\$1,948
CONGESTED HOURS PER DAY*	0

\*Delays Exceeding User-Specified Maximum

**IH 43/94: BECHER ST TO MITCHELL INTERCHANGE (MILWAUKEE COUNTY)**  
**OFF-PEAK DAY CLOSURE**  
**NO DIVERSION ROUTE (MAX QUEUE METHOD)**

**AUGUST**  
 Analyzed for 2009  
 Construction Season

**GRAPHICAL REPRESENTATION OF TRAFFIC MODEL INPUT AND OUTPUT**  
**MON-THUR EASTBOUND DIRECTION**

