

IH 43/94: BECHER ST TO MITCHELL INTERCHANGE (MILWAUKEE COUNTY) OFF-PEAK DAY 2 LANE CLOSURE NO DIVERSION ROUTE (MAX QUEUE METHOD)	AUGUST
	Analyzed for 2009 Construction Season

SUMMARY OF TRAFFIC MODEL OUTPUT

FRIDAY WESTBOUND DIRECTION

TIME OF DAY	FLOWS AND CAPACITY IN VEH/HR						AVERAGE SPEEDS IN MPH				
	MAIN ROUTE		SITE CAPA CITY	FLOW		AV.DEL PER VEH (MINS)	AVERAGE QUEUE (VEH)	MAIN ROUTE		SITE	
	DEMAND FLOW	PCT HEAVY		MAIN ROUTE	'DIVER TED'			WITHOUT WORK ZONE	WITH WORK ZONE		
MID-1 AM	861	0.0	OFF	861	0	0.00	0	69.7	69.7	69.7	
1-2 AM	624	0.0	OFF	624	0	0.00	0	70.0	70.0	70.0	
2-3 AM	596	0.0	OFF	596	0	0.00	0	70.0	70.0	70.0	
3-4 AM	486	0.0	OFF	486	0	0.00	0	70.1	70.1	70.1	
4-5 AM	861	0.0	OFF	861	0	0.00	0	69.7	69.7	69.7	
5-6 AM	1863	0.0	OFF	1863	0	0.00	0	68.4	68.4	68.4	
6-7 AM	2733	0.0	OFF	2733	0	0.00	0	67.3	67.3	67.3	
7-8 AM	2811	0.0	OFF	2811	0	0.00	0	67.3	67.3	67.3	
8-9 AM	3009	0.0	OFF	3009	0	0.00	0	67.0	67.0	67.0	
9-10 AM	2981	0.0	OFF	2981	0	0.00	0	67.0	67.0	67.0	
10-11 AM	3192	0.0	1499	1550	1642	16.48+	412	66.8	10.7	36.6	
11AM-NOON	3523	0.0	1499	1655	1868	14.39+	379	66.4	11.9	35.9	
NOON-1PM	4010	0.0	1499	1559	2452	15.72+	395	63.5	11.1	35.2	
1-2 PM	4150	0.0	1500	1500	2650	15.80+	400	62.5	10.9	35.8	
2-3 PM	4353	0.0	1500	1500	2853	15.72+	400	61.1	10.9	35.8	
3-4 PM	5209	0.0	OFF	5209	0	0.57	43	55.3	48.1	48.1	
4-5 PM	5138	0.0	OFF	5138	0	0.00	0	55.8	55.8	55.8	
5-6 PM	5333	0.0	OFF	5333	0	0.00	0	54.4	54.4	54.4	
6-7 PM	3634	0.0	OFF	3634	0	0.00	0	66.0	66.0	66.0	
7-8 PM	2957	0.0	OFF	2957	0	0.00	0	67.1	67.1	67.1	
8-9 PM	2093	0.0	OFF	2093	0	0.00	0	68.1	68.1	68.1	
9-10 PM	2123	0.0	OFF	2123	0	0.00	0	68.1	68.1	68.1	
10-11 PM	2687	0.0	OFF	2687	0	0.00	0	67.4	67.4	67.4	
11PM-MID	1984	0.0	OFF	1984	0	0.00	0	68.2	68.2	68.2	

"OFF" INDICATES NO ROAD WORK (ALL LANES OPEN TO TRAFFIC)

+ INDICATES QUEUEING EXCEEDS USER-SPECIFIED MAXIMUM LIMIT

----- SITE BREAKDOWN DELAYS -----	
BREAKDOWN DURATION (MINS)	0
RANGE OF QUEUE DELAY - MIN	0.0
(VEH-H) MAX	0.0
AV BREAKDOWNS PER DAY	0.00
AV QUEUE DELAY/DAY (VEH-H)	0.0
AV TOTAL DELAY/DAY (VEH-H)	0.0

----- SITE ACCIDENT DELAYS -----	
BREAKDOWN DURATION (MINS)	0
RANGE OF QUEUE DELAY - MIN	0
(VEH-H) MAX	0
AV BREAKDOWNS PER DAY	0
AV QUEUE DELAY/DAY (VEH-H)	0
AV TOTAL DELAY/DAY (VEH-H)	0

AVERAGE ACCIDENT NUMBERS (PIA/DAY)	
MAIN ROUTE WITHOUT WORKS	0.0374
MAIN ROUTE WITH WORKS	0.0305
'DIVERSION'	0.0148
PIA: Personal Injury Accidents	
IMPACTS ON ROAD USERS	
ROAD USER COSTS PER DAY	\$66,814
CONGESTED HOURS PER DAY*	5

*Delays Exceeding User-Specified Maximum

IH 43/94: BECHER ST TO MITCHELL INTERCHANGE (MILWAUKEE COUNTY)
OFF-PEAK DAY 2 LANE CLOSURE
NO DIVERSION ROUTE (MAX QUEUE METHOD)

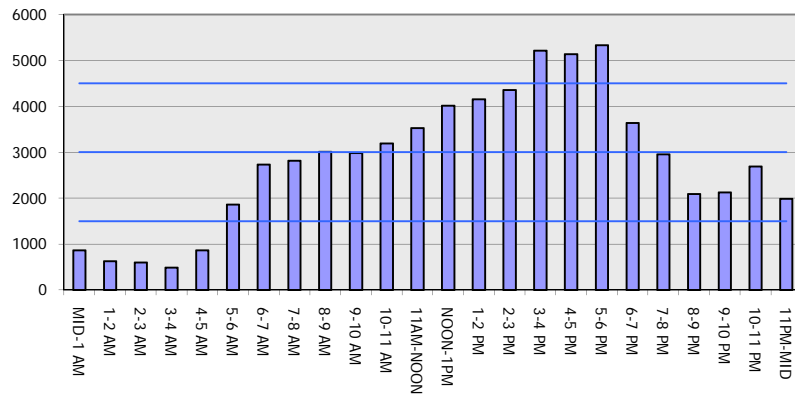
AUGUST

Analyzed for 2009
 Construction Season

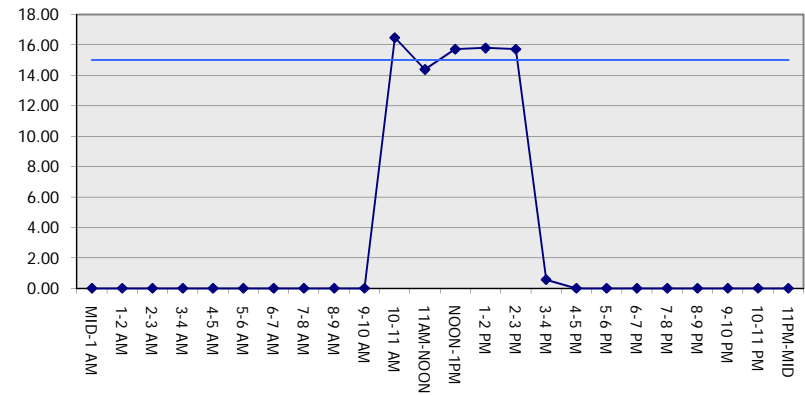
GRAPHICAL REPRESENTATION OF TRAFFIC MODEL INPUT AND OUTPUT

FRIDAY WESTBOUND DIRECTION

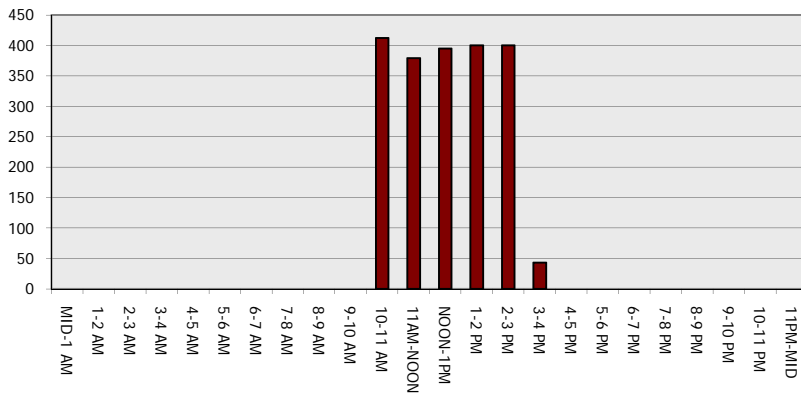
Main Route - Traffic Demand (Vehicles Per Hour)



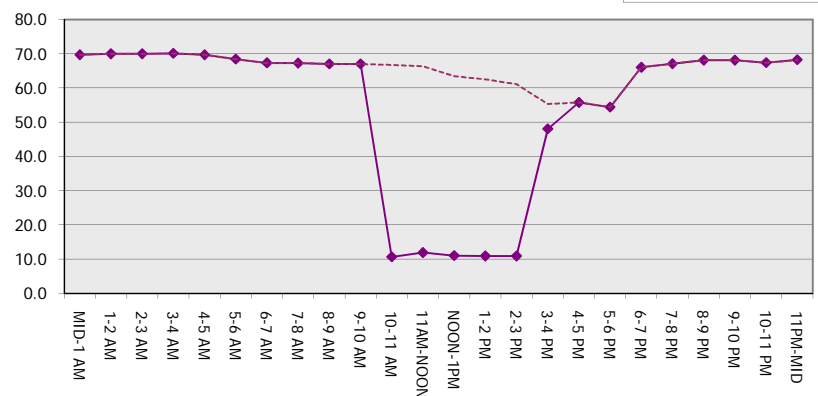
Main Route Average Delay Per Vehicle (Minutes)



Main Route - Average Queue Length (Vehicles)



Main Route - Average Speed (MPH)



IH 43/94: BECHER ST TO MITCHELL INTERCHANGE (MILWAUKEE COUNTY) OFF-PEAK DAY 2 LANE CLOSURE NO DIVERSION ROUTE (MAX QUEUE METHOD)	AUGUST
	Analyzed for 2009 Construction Season

SUMMARY OF TRAFFIC MODEL OUTPUT

FRIDAY EASTBOUND DIRECTION

TIME OF DAY	FLOWS AND CAPACITY IN VEH/HR						AVERAGE SPEEDS IN MPH			
	MAIN ROUTE		SITE CAPA CITY	FLOW		AV.DEL PER VEH (MINS)	AVERAGE QUEUE (VEH)	MAIN ROUTE		SITE
	DEMAND FLOW	PCT HEAVY		MAIN ROUTE	'DIVER TED'			WITHOUT WORK ZONE	WITH WORK ZONE	
MID-1 AM	765	0.0	OFF	765	0	0.00	0	69.8	69.8	69.8
1-2 AM	402	0.0	OFF	402	0	0.00	0	70.2	70.2	70.2
2-3 AM	373	0.0	OFF	373	0	0.00	0	70.2	70.2	70.2
3-4 AM	371	0.0	OFF	371	0	0.00	0	70.2	70.2	70.2
4-5 AM	601	0.0	OFF	601	0	0.00	0	70.0	70.0	70.0
5-6 AM	1895	0.0	OFF	1895	0	0.00	0	68.4	68.4	68.4
6-7 AM	4054	0.0	OFF	4054	0	0.00	0	63.2	63.2	63.2
7-8 AM	4803	0.0	OFF	4803	0	0.00	0	58.1	58.1	58.1
8-9 AM	4193	0.0	OFF	4193	0	0.00	0	62.2	62.2	62.2
9-10 AM	3096	0.0	OFF	3096	0	0.00	0	66.9	66.9	66.9
10-11 AM	3040	0.0	1499	1546	1494	15.58+	388	66.9	11.2	36.5
11AM-NOON	3348	0.0	1499	1619	1729	14.43+	381	66.6	11.9	36.0
NOON-1PM	3505	0.0	1499	1756	1749	15.58+	385	66.4	11.2	30.8
1-2 PM	3658	0.0	1500	1500	2158	16.24+	400	65.9	10.8	30.8
2-3 PM	3864	0.0	1500	1500	2364	16.17+	400	64.5	10.8	30.8
3-4 PM	3954	0.0	OFF	3954	0	0.59	43	63.8	54.2	54.2
4-5 PM	3687	0.0	OFF	3687	0	0.00	0	65.6	65.6	65.6
5-6 PM	3756	0.0	OFF	3756	0	0.00	0	65.2	65.2	65.2
6-7 PM	3617	0.0	OFF	3617	0	0.00	0	66.1	66.1	66.1
7-8 PM	3006	0.0	OFF	3006	0	0.00	0	67.0	67.0	67.0
8-9 PM	2219	0.0	OFF	2219	0	0.00	0	68.0	68.0	68.0
9-10 PM	1904	0.0	OFF	1904	0	0.00	0	68.4	68.4	68.4
10-11 PM	2021	0.0	OFF	2021	0	0.00	0	68.2	68.2	68.2
11PM-MID	1505	0.0	OFF	1505	0	0.00	0	68.9	68.9	68.9

"OFF" INDICATES NO ROAD WORK (ALL LANES OPEN TO TRAFFIC)

+ INDICATES QUEUEING EXCEEDS USER-SPECIFIED MAXIMUM LIMIT

----- SITE BREAKDOWN DELAYS -----	
BREAKDOWN DURATION (MINS)	0
RANGE OF QUEUE DELAY - MIN (VEH-H) MAX	0.0
AV BREAKDOWNS PER DAY	0.00
AV QUEUE DELAY/DAY (VEH-H)	0.0
AV TOTAL DELAY/DAY (VEH-H)	0.0

----- SITE ACCIDENT DELAYS -----	
BREAKDOWN DURATION (MINS)	0
RANGE OF QUEUE DELAY - MIN (VEH-H) MAX	0
AV BREAKDOWNS PER DAY	0
AV QUEUE DELAY/DAY (VEH-H)	0
AV TOTAL DELAY/DAY (VEH-H)	0

AVERAGE ACCIDENT NUMBERS (PIA/DAY)	
MAIN ROUTE WITHOUT WORKS	0.0354
MAIN ROUTE WITH WORKS	0.0296
'DIVERSION'	0.0122

PIA: Personal Injury Accidents

ECONOMIC IMPACT ON ROAD USERS	
ROAD USER COSTS PER DAY	\$60,469
CONGESTED HOURS PER DAY*	5

*Delays Exceeding User-Specified Maximum

IH 43/94: BECHER ST TO MITCHELL INTERCHANGE (MILWAUKEE COUNTY)
OFF-PEAK DAY 2 LANE CLOSURE
NO DIVERSION ROUTE (MAX QUEUE METHOD)

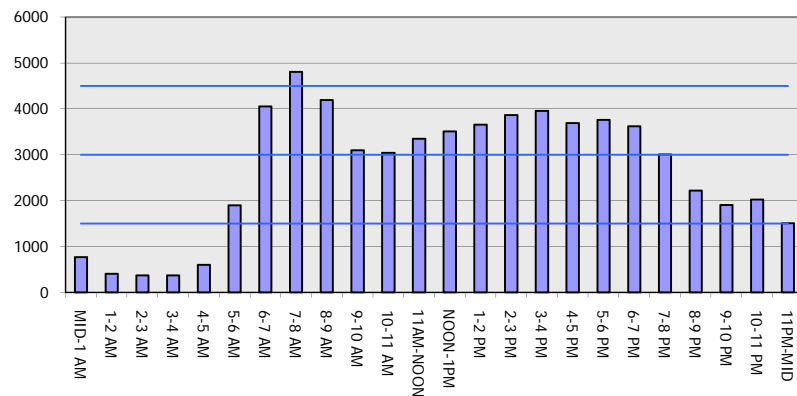
AUGUST

Analyzed for 2009
 Construction Season

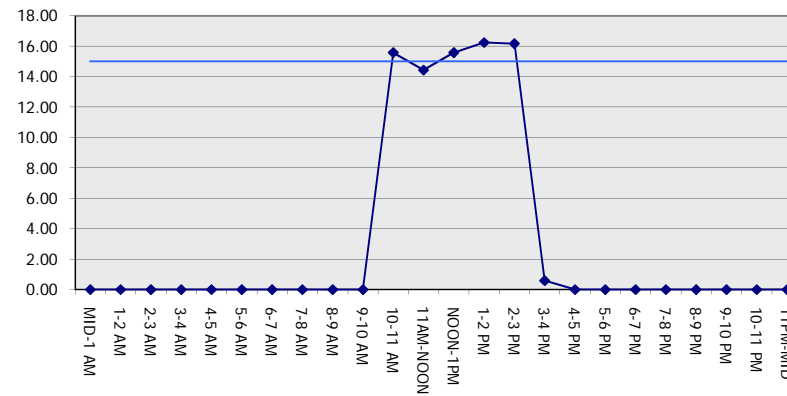
GRAPHICAL REPRESENTATION OF TRAFFIC MODEL INPUT AND OUTPUT

FRIDAY EASTBOUND DIRECTION

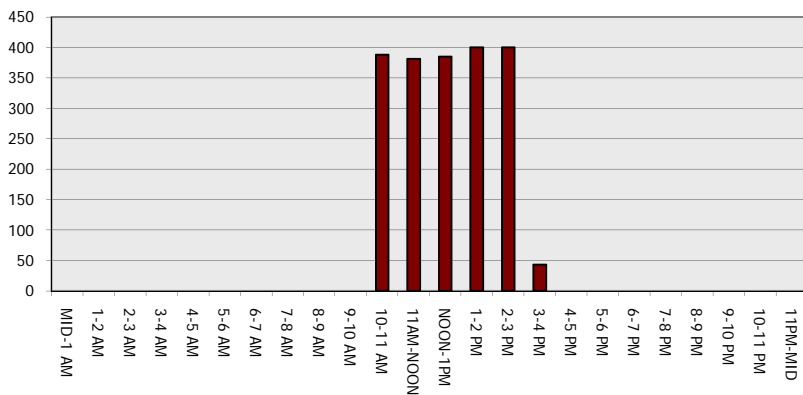
Main Route - Traffic Demand (Vehicles Per Hour)



Main Route Average Delay Per Vehicle (Minutes)



Main Route - Average Queue Length (Vehicles)



Main Route - Average Speed (MPH)

