

IH 43/94: BECHER ST TO MITCHELL INTERCHANGE (MILWAUKEE COUNTY) OFF-PEAK DAY CLOSURE NO DIVERSION ROUTE (MAX QUEUE METHOD)	AUGUST
	Analyzed for 2009 Construction Season

SUMMARY OF TRAFFIC MODEL OUTPUT

FRIDAY WESTBOUND DIRECTION

TIME OF DAY	FLOWS AND CAPACITY IN VEH/HR						AVERAGE SPEEDS IN MPH				
	MAIN ROUTE		SITE CAPA CITY	FLOW		AV.DEL PER VEH (MINS)	AVERAGE QUEUE (VEH)	MAIN ROUTE		SITE	
	DEMAND FLOW	PCT HEAVY		MAIN ROUTE	'DIVER TED'			WITHOUT WORK ZONE	WITH WORK ZONE		
MID-1 AM	861	0.0	OFF	861	0	0.00	0	69.7	69.7	69.7	
1-2 AM	624	0.0	OFF	624	0	0.00	0	70.0	70.0	70.0	
2-3 AM	596	0.0	OFF	596	0	0.00	0	70.0	70.0	70.0	
3-4 AM	486	0.0	OFF	486	0	0.00	0	70.1	70.1	70.1	
4-5 AM	861	0.0	OFF	861	0	0.00	0	69.7	69.7	69.7	
5-6 AM	1863	0.0	OFF	1863	0	0.00	0	68.4	68.4	68.4	
6-7 AM	2733	0.0	OFF	2733	0	0.00	0	67.3	67.3	67.3	
7-8 AM	2811	0.0	OFF	2811	0	0.00	0	67.3	67.3	67.3	
8-9 AM	3009	0.0	OFF	3009	0	0.00	0	67.0	67.0	67.0	
9-10 AM	2981	0.0	OFF	2981	0	0.00	0	67.0	67.0	67.0	
10-11 AM	3192	0.0	2999	3192	0	2.01	79	66.8	40.7	37.3	
11AM-NOON	3523	0.0	3000	3523	0	7.91	427	66.4	18.9	37.3	
NOON-1PM	4010	0.0	2999	3090	920	15.79+	841	63.5	12.2	37.3	
1-2 PM	4150	0.0	3000	3029	1121	15.69+	838	62.5	12.3	37.3	
2-3 PM	4353	0.0	3000	3014	1339	15.72+	845	61.1	12.2	37.3	
3-4 PM	5209	0.0	OFF	5209	0	4.94	452	55.3	24.0	24.0	
4-5 PM	5138	0.0	OFF	5138	0	0.05	1	55.8	55.1	55.1	
5-6 PM	5333	0.0	OFF	5333	0	0.00	0	54.4	54.4	54.4	
6-7 PM	3634	0.0	OFF	3634	0	0.00	0	66.0	66.0	66.0	
7-8 PM	2957	0.0	OFF	2957	0	0.00	0	67.1	67.1	67.1	
8-9 PM	2093	0.0	OFF	2093	0	0.00	0	68.1	68.1	68.1	
9-10 PM	2123	0.0	OFF	2123	0	0.00	0	68.1	68.1	68.1	
10-11 PM	2687	0.0	OFF	2687	0	0.00	0	67.4	67.4	67.4	
11PM-MID	1984	0.0	OFF	1984	0	0.00	0	68.2	68.2	68.2	

"OFF" INDICATES NO ROAD WORK (ALL LANES OPEN TO TRAFFIC)

+ INDICATES QUEUEING EXCEEDS USER-SPECIFIED MAXIMUM LIMIT

----- SITE BREAKDOWN DELAYS -----	
BREAKDOWN DURATION (MINS)	0
RANGE OF QUEUE DELAY - MIN (VEH-H) MAX	0.0
AV BREAKDOWNS PER DAY	0.00
AV QUEUE DELAY/DAY (VEH-H)	0.0
AV TOTAL DELAY/DAY (VEH-H)	0.0

----- SITE ACCIDENT DELAYS -----	
BREAKDOWN DURATION (MINS)	0
RANGE OF QUEUE DELAY - MIN (VEH-H) MAX	0
AV BREAKDOWNS PER DAY	0
AV QUEUE DELAY/DAY (VEH-H)	0
AV TOTAL DELAY/DAY (VEH-H)	0

AVERAGE ACCIDENT NUMBERS (PIA/DAY)	
MAIN ROUTE WITHOUT WORKS	0.0374
MAIN ROUTE WITH WORKS	0.0345
'DIVERSION'	0.0044
<small>PIA: Personal Injury Accidents</small>	
IMPACTS ON ROAD USERS	
ROAD USER COSTS PER DAY	\$51,861
CONGESTED HOURS PER DAY*	3

*Delays Exceeding User-Specified Maximum

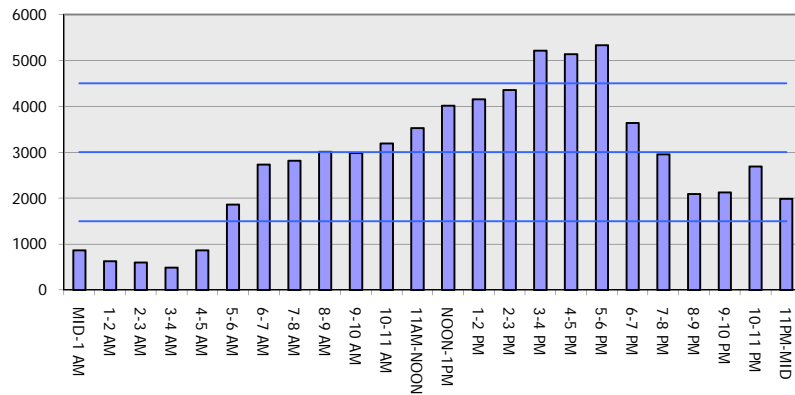
IH 43/94: BECHER ST TO MITCHELL INTERCHANGE (MILWAUKEE COUNTY)
OFF-PEAK DAY CLOSURE
NO DIVERSION ROUTE (MAX QUEUE METHOD)

AUGUST

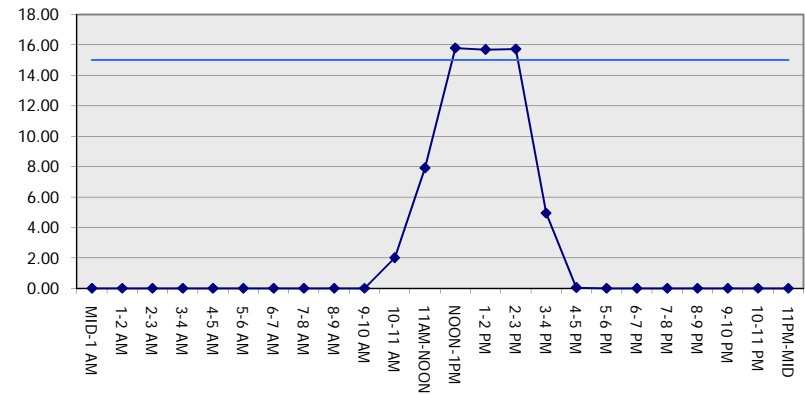
Analyzed for 2009
 Construction Season

GRAPHICAL REPRESENTATION OF TRAFFIC MODEL INPUT AND OUTPUT
FRIDAY WESTBOUND DIRECTION

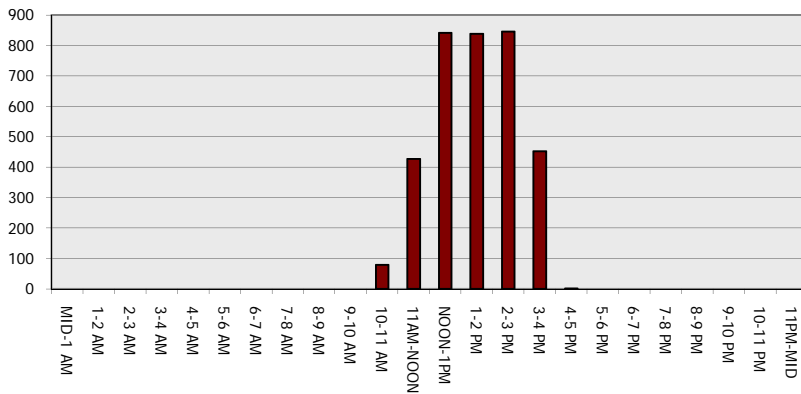
Main Route - Traffic Demand (Vehicles Per Hour)



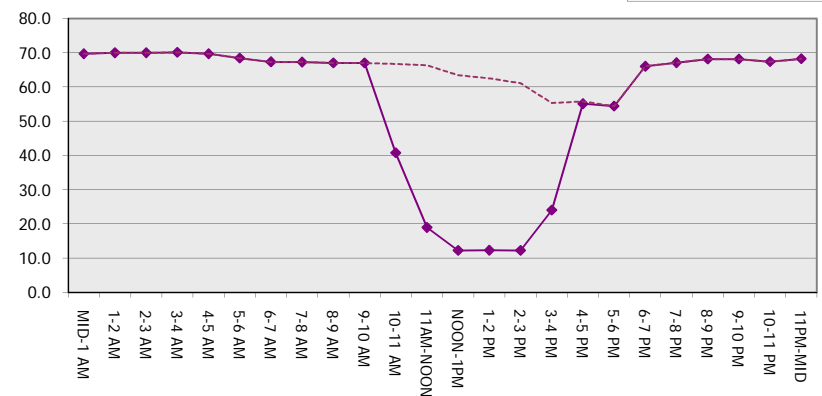
Main Route Average Delay Per Vehicle (Minutes)



Main Route - Average Queue Length (Vehicles)



Main Route - Average Speed (MPH)



IH 43/94: BECHER ST TO MITCHELL INTERCHANGE (MILWAUKEE COUNTY) OFF-PEAK DAY CLOSURE NO DIVERSION ROUTE (MAX QUEUE METHOD)	AUGUST
	Analyzed for 2009 Construction Season

SUMMARY OF TRAFFIC MODEL OUTPUT

FRIDAY EASTBOUND DIRECTION

TIME OF DAY	FLOWS AND CAPACITY IN VEH/HR						AVERAGE SPEEDS IN MPH			
	MAIN ROUTE		SITE CAPA CITY	FLOW		AV.DEL PER VEH (MINS)	AVERAGE QUEUE (VEH)	MAIN ROUTE		SITE
	DEMAND FLOW	PCT HEAVY		MAIN ROUTE	'DIVER TED'			WITHOUT WORK ZONE	WITH WORK ZONE	
MID-1 AM	765	0.0	OFF	765	0	0.00	0	69.8	69.8	69.8
1-2 AM	402	0.0	OFF	402	0	0.00	0	70.2	70.2	70.2
2-3 AM	373	0.0	OFF	373	0	0.00	0	70.2	70.2	70.2
3-4 AM	371	0.0	OFF	371	0	0.00	0	70.2	70.2	70.2
4-5 AM	601	0.0	OFF	601	0	0.00	0	70.0	70.0	70.0
5-6 AM	1895	0.0	OFF	1895	0	0.00	0	68.4	68.4	68.4
6-7 AM	4054	0.0	OFF	4054	0	0.00	0	63.2	63.2	63.2
7-8 AM	4803	0.0	OFF	4803	0	0.00	0	58.1	58.1	58.1
8-9 AM	4193	0.0	OFF	4193	0	0.00	0	62.2	62.2	62.2
9-10 AM	3096	0.0	OFF	3096	0	0.00	0	66.9	66.9	66.9
10-11 AM	3040	0.0	2999	3040	0	0.94	12	66.9	51.5	37.3
11AM-NOON	3348	0.0	3000	3348	0	3.97	199	66.6	29.4	37.3
NOON-1PM	3505	0.0	3000	3505	0	11.79+	630	66.4	14.5	37.3
1-2 PM	3658	0.0	2999	2988	671	15.80+	834	65.9	12.3	37.3
2-3 PM	3864	0.0	2999	2986	878	15.75+	835	64.5	12.3	37.3
3-4 PM	3954	0.0	OFF	3954	0	2.17	183	63.8	38.4	38.4
4-5 PM	3687	0.0	OFF	3687	0	0.00	0	65.6	65.6	65.6
5-6 PM	3756	0.0	OFF	3756	0	0.00	0	65.2	65.2	65.2
6-7 PM	3617	0.0	OFF	3617	0	0.00	0	66.1	66.1	66.1
7-8 PM	3006	0.0	OFF	3006	0	0.00	0	67.0	67.0	67.0
8-9 PM	2219	0.0	OFF	2219	0	0.00	0	68.0	68.0	68.0
9-10 PM	1904	0.0	OFF	1904	0	0.00	0	68.4	68.4	68.4
10-11 PM	2021	0.0	OFF	2021	0	0.00	0	68.2	68.2	68.2
11PM-MID	1505	0.0	OFF	1505	0	0.00	0	68.9	68.9	68.9

"OFF" INDICATES NO ROAD WORK (ALL LANES OPEN TO TRAFFIC)

+ INDICATES QUEUEING EXCEEDS USER-SPECIFIED MAXIMUM LIMIT

----- SITE BREAKDOWN DELAYS -----	
BREAKDOWN DURATION (MINS)	0
RANGE OF QUEUE DELAY - MIN (VEH-H) MAX	0.0
AV BREAKDOWNS PER DAY	0.00
AV QUEUE DELAY/DAY (VEH-H)	0.0
AV TOTAL DELAY/DAY (VEH-H)	0.0

----- SITE ACCIDENT DELAYS -----	
BREAKDOWN DURATION (MINS)	0
RANGE OF QUEUE DELAY - MIN (VEH-H) MAX	0
AV BREAKDOWNS PER DAY	0
AV QUEUE DELAY/DAY (VEH-H)	0
AV TOTAL DELAY/DAY (VEH-H)	0

AVERAGE ACCIDENT NUMBERS (PIA/DAY)	
MAIN ROUTE WITHOUT WORKS	0.0354
MAIN ROUTE WITH WORKS	0.0335
'DIVERSION'	0.0020

PIA: Personal Injury Accidents

ECONOMIC IMPACT ON ROAD USERS	
ROAD USER COSTS PER DAY	\$37,254
CONGESTED HOURS PER DAY*	3

*Delays Exceeding User-Specified Maximum

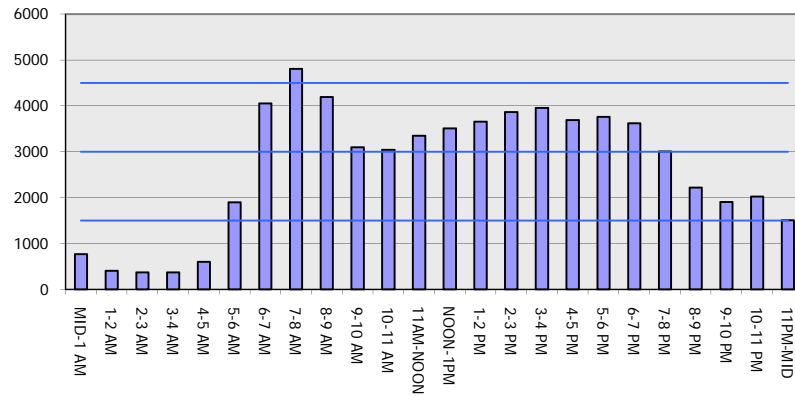
IH 43/94: BECHER ST TO MITCHELL INTERCHANGE (MILWAUKEE COUNTY)
OFF-PEAK DAY CLOSURE
NO DIVERSION ROUTE (MAX QUEUE METHOD)

AUGUST

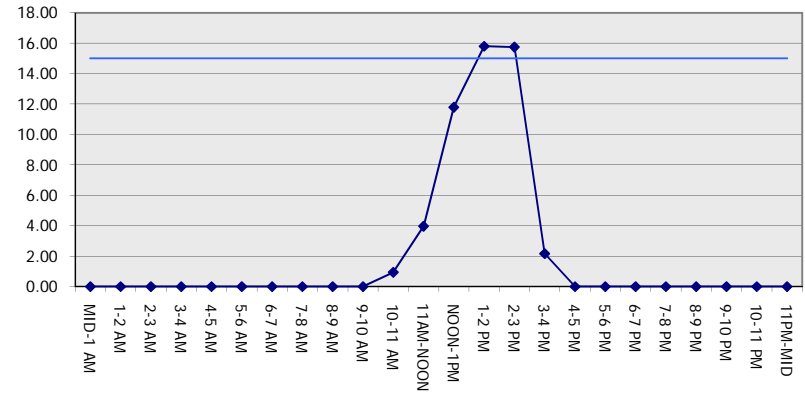
Analyzed for 2009
 Construction Season

GRAPHICAL REPRESENTATION OF TRAFFIC MODEL INPUT AND OUTPUT
FRIDAY EASTBOUND DIRECTION

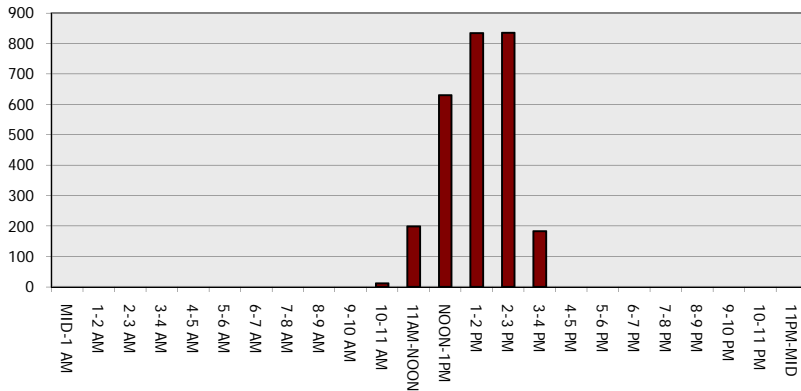
Main Route - Traffic Demand (Vehicles Per Hour)



Main Route Average Delay Per Vehicle (Minutes)



Main Route - Average Queue Length (Vehicles)



Main Route - Average Speed (MPH)

