

IH 43/94: BECHER ST TO MITCHELL INTERCHANGE (MILWAUKEE COUNTY) OFF-PEAK DAY 2 LANE CLOSURE NO DIVERSION ROUTE (MAX QUEUE METHOD)	MAY
	Analyzed for 2009 Construction Season

SUMMARY OF TRAFFIC MODEL OUTPUT

SUNDAY WESTBOUND DIRECTION

TIME OF DAY	FLOWS AND CAPACITY IN VEH/HR						AVERAGE SPEEDS IN MPH			
	MAIN ROUTE		SITE CAPA CITY	FLOW		AV.DEL PER VEH (MINS)	AVERAGE QUEUE (VEH)	MAIN ROUTE		SITE
	DEMAND FLOW	PCT HEAVY		MAIN ROUTE	'DIVER TED'			WITHOUT WORK ZONE	WITH WORK ZONE	
MID-1 AM	995	0.0	OFF	995	0	0.00	0	69.5	69.5	69.5
1-2 AM	762	0.0	OFF	762	0	0.00	0	69.8	69.8	69.8
2-3 AM	871	0.0	OFF	871	0	0.00	0	69.7	69.7	69.7
3-4 AM	477	0.0	OFF	477	0	0.00	0	70.1	70.1	70.1
4-5 AM	387	0.0	OFF	387	0	0.00	0	70.2	70.2	70.2
5-6 AM	537	0.0	OFF	537	0	0.00	0	70.0	70.0	70.0
6-7 AM	795	0.0	OFF	795	0	0.00	0	69.7	69.7	69.7
7-8 AM	1007	0.0	OFF	1007	0	0.00	0	69.5	69.5	69.5
8-9 AM	1514	0.0	OFF	1514	0	0.00	0	68.9	68.9	68.9
9-10 AM	2286	0.0	1499	1814	473	10.22+	278	67.9	15.8	31.5
10-11 AM	2787	0.0	1500	1500	1287	16.22+	400	67.3	10.9	32.2
11AM-NOON	3449	0.0	1500	1500	1949	16.18+	400	66.4	10.9	32.2
NOON-1PM	3771	0.0	1500	1500	2271	16.12+	399	65.1	10.9	32.2
1-2 PM	3798	0.0	1500	1500	2298	16.11+	400	64.9	10.9	32.2
2-3 PM	3823	0.0	1500	1500	2323	16.10+	400	64.7	10.9	32.2
3-4 PM	3735	0.0	1500	1500	2235	16.13+	400	65.3	10.9	32.2
4-5 PM	3881	0.0	1500	1500	2381	16.08+	399	64.3	10.9	32.2
5-6 PM	3290	0.0	1500	1500	1790	16.19+	399	66.6	10.9	32.2
6-7 PM	2770	0.0	1500	1500	1270	16.22+	400	67.3	10.9	32.2
7-8 PM	2430	0.0	OFF	2430	0	0.16	13	67.7	64.5	64.5
8-9 PM	2069	0.0	OFF	2069	0	0.00	0	68.2	68.2	68.2
9-10 PM	1700	0.0	OFF	1700	0	0.00	0	68.6	68.6	68.6
10-11 PM	1278	0.0	OFF	1278	0	0.00	0	69.1	69.1	69.1
11PM-MID	820	0.0	OFF	820	0	0.00	0	69.7	69.7	69.7

"OFF" INDICATES NO ROAD WORK (ALL LANES OPEN TO TRAFFIC)

+ INDICATES QUEUEING EXCEEDS USER-SPECIFIED MAXIMUM LIMIT

----- SITE BREAKDOWN DELAYS -----	
BREAKDOWN DURATION (MINS)	0
RANGE OF QUEUE DELAY - MIN (VEH-H) MAX	0.0
AV BREAKDOWNS PER DAY	0.00
AV QUEUE DELAY/DAY (VEH-H)	0.0
AV TOTAL DELAY/DAY (VEH-H)	0.0

----- SITE ACCIDENT DELAYS -----	
BREAKDOWN DURATION (MINS)	0
RANGE OF QUEUE DELAY - MIN (VEH-H) MAX	0
AV BREAKDOWNS PER DAY	0
AV QUEUE DELAY/DAY (VEH-H)	0
AV TOTAL DELAY/DAY (VEH-H)	0

AVERAGE ACCIDENT NUMBERS (PIA/DAY)	
MAIN ROUTE WITHOUT WORKS	0.0274
MAIN ROUTE WITH WORKS	0.0162
'DIVERSION'	0.0236
PIA: Personal Injury Accidents	
IMPACTS ON ROAD USERS	
ROAD USER COSTS PER DAY	\$146,821
CONGESTED HOURS PER DAY*	10

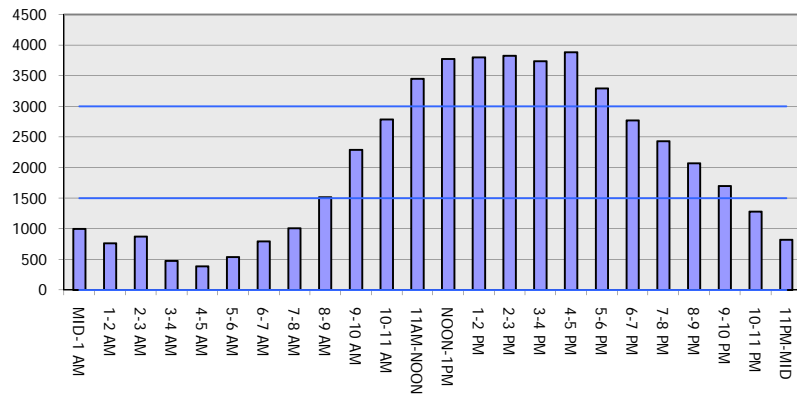
*Delays Exceeding User-Specified Maximum

IH 43/94: BECHER ST TO MITCHELL INTERCHANGE (MILWAUKEE COUNTY)
OFF-PEAK DAY 2 LANE CLOSURE
NO DIVERSION ROUTE (MAX QUEUE METHOD)

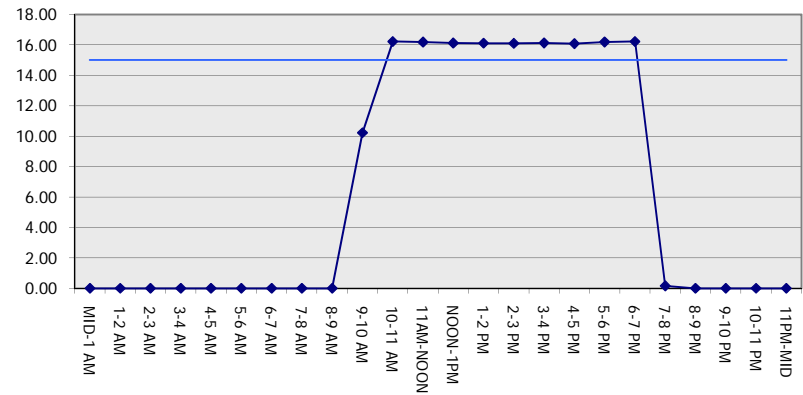
MAY
 Analyzed for 2009
 Construction Season

GRAPHICAL REPRESENTATION OF TRAFFIC MODEL INPUT AND OUTPUT
SUNDAY WESTBOUND DIRECTION

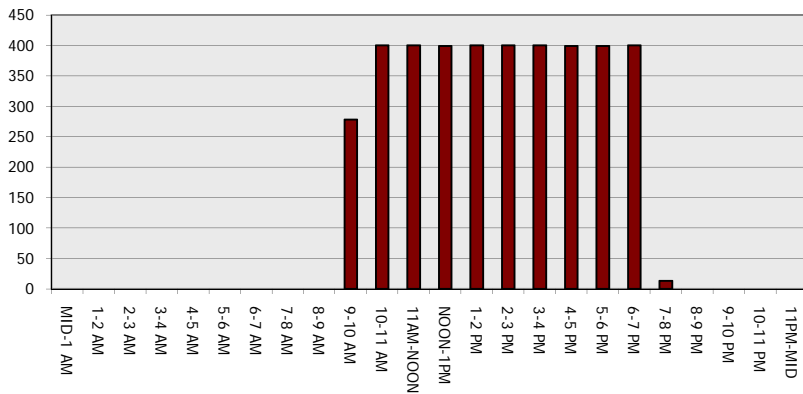
Main Route - Traffic Demand (Vehicles Per Hour)



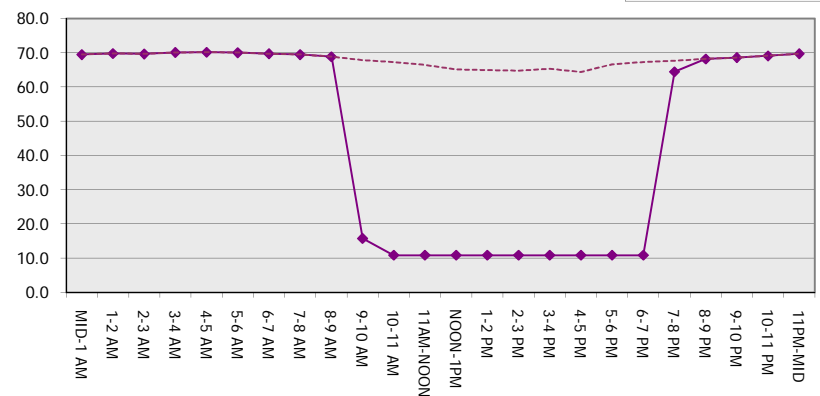
Main Route Average Delay Per Vehicle (Minutes)



Main Route - Average Queue Length (Vehicles)



Main Route - Average Speed (MPH)



IH 43/94: BECHER ST TO MITCHELL INTERCHANGE (MILWAUKEE COUNTY) OFF-PEAK DAY 2 LANE CLOSURE NO DIVERSION ROUTE (MAX QUEUE METHOD)	MAY
	Analyzed for 2009 Construction Season

SUMMARY OF TRAFFIC MODEL OUTPUT

SUNDAY EASTBOUND DIRECTION

TIME OF DAY	FLOWS AND CAPACITY IN VEH/HR						AVERAGE SPEEDS IN MPH			
	MAIN ROUTE		SITE CAPA CITY	FLOW		AV.DEL PER VEH (MINS)	AVERAGE QUEUE (VEH)	MAIN ROUTE		SITE
	DEMAND FLOW	PCT HEAVY		MAIN ROUTE	'DIVER TED'			WITHOUT WORK ZONE	WITH WORK ZONE	
MID-1 AM	950	0.0	OFF	950	0	0.00	0	69.6	69.6	69.6
1-2 AM	559	0.0	OFF	559	0	0.00	0	70.0	70.0	70.0
2-3 AM	392	0.0	OFF	392	0	0.00	0	70.2	70.2	70.2
3-4 AM	285	0.0	OFF	285	0	0.00	0	70.2	70.2	70.2
4-5 AM	249	0.0	OFF	249	0	0.00	0	70.2	70.2	70.2
5-6 AM	406	0.0	OFF	406	0	0.00	0	70.2	70.2	70.2
6-7 AM	662	0.0	OFF	662	0	0.00	0	69.9	69.9	69.9
7-8 AM	925	0.0	OFF	925	0	0.00	0	69.6	69.6	69.6
8-9 AM	1460	0.0	OFF	1460	0	0.00	0	68.9	68.9	68.9
9-10 AM	1919	0.0	1499	1919	0	6.52	182	68.4	21.9	30.8
10-11 AM	2334	0.0	1499	1500	834	16.33+	399	67.8	10.8	30.8
11AM-NOON	2911	0.0	1500	1500	1411	16.30+	399	67.1	10.8	30.8
NOON-1PM	3286	0.0	1500	1500	1786	16.28+	400	66.6	10.8	30.8
1-2 PM	3194	0.0	1500	1500	1694	16.28+	399	66.8	10.8	30.8
2-3 PM	3090	0.0	1500	1500	1590	16.29+	400	66.9	10.8	30.8
3-4 PM	3370	0.0	1499	1500	1870	16.27+	399	66.6	10.8	30.8
4-5 PM	3404	0.0	1500	1500	1904	16.27+	400	66.5	10.8	30.8
5-6 PM	3240	0.0	1500	1500	1740	16.28+	400	66.7	10.8	30.8
6-7 PM	2937	0.0	1499	1500	1437	16.30+	399	67.1	10.8	30.8
7-8 PM	2692	0.0	OFF	2692	0	0.29	26	67.4	61.7	61.7
8-9 PM	2291	0.0	OFF	2291	0	0.00	0	67.9	67.9	67.9
9-10 PM	2017	0.0	OFF	2017	0	0.00	0	68.2	68.2	68.2
10-11 PM	1520	0.0	OFF	1520	0	0.00	0	68.9	68.9	68.9
11PM-MID	966	0.0	OFF	966	0	0.00	0	69.6	69.6	69.6

"OFF" INDICATES NO ROAD WORK (ALL LANES OPEN TO TRAFFIC)

+ INDICATES QUEUEING EXCEEDS USER-SPECIFIED MAXIMUM LIMIT

BREAKDOWN DURATION (MINS)	0
RANGE OF QUEUE DELAY - MIN (VEH-H) MAX	0.0
AV BREAKDOWNS PER DAY	0.00
AV QUEUE DELAY/DAY (VEH-H)	0.0
AV TOTAL DELAY/DAY (VEH-H)	0.0

BREAKDOWN DURATION (MINS)	0
RANGE OF QUEUE DELAY - MIN (VEH-H) MAX	0
AV BREAKDOWNS PER DAY	0
AV QUEUE DELAY/DAY (VEH-H)	0
AV TOTAL DELAY/DAY (VEH-H)	0

MAIN ROUTE WITHOUT WORKS	0.0251
MAIN ROUTE WITH WORKS	0.0161
'DIVERSION'	0.0184

PIA: Personal Injury Accidents

ROAD USER COSTS PER DAY	\$129,170
CONGESTED HOURS PER DAY*	9

*Delays Exceeding User-Specified Maximum

IH 43/94: BECHER ST TO MITCHELL INTERCHANGE (MILWAUKEE COUNTY)
OFF-PEAK DAY 2 LANE CLOSURE
NO DIVERSION ROUTE (MAX QUEUE METHOD)

MAY
 Analyzed for 2009
 Construction Season

GRAPHICAL REPRESENTATION OF TRAFFIC MODEL INPUT AND OUTPUT
SUNDAY EASTBOUND DIRECTION

