

IH 43/94: BECHER ST TO MITCHELL INTERCHANGE (MILWAUKEE COUNTY) OFF-PEAK DAY CLOSURE NO DIVERSION ROUTE (MAX QUEUE METHOD)	MAY
	Analyzed for 2009 Construction Season

SUMMARY OF TRAFFIC MODEL OUTPUT

SUNDAY WESTBOUND DIRECTION

TIME OF DAY	FLOWS AND CAPACITY IN VEH/HR						AVERAGE SPEEDS IN MPH			
	MAIN ROUTE		SITE CAPA CITY	FLOW		AV.DEL PER VEH (MINS)	AVERAGE QUEUE (VEH)	MAIN ROUTE		SITE
	DEMAND FLOW	PCT HEAVY		MAIN ROUTE	'DIVER TED'			WITHOUT WORK ZONE	WITH WORK ZONE	
MID-1 AM	995	0.0	OFF	995	0	0.00	0	69.5	69.5	69.5
1-2 AM	762	0.0	OFF	762	0	0.00	0	69.8	69.8	69.8
2-3 AM	871	0.0	OFF	871	0	0.00	0	69.7	69.7	69.7
3-4 AM	477	0.0	OFF	477	0	0.00	0	70.1	70.1	70.1
4-5 AM	387	0.0	OFF	387	0	0.00	0	70.2	70.2	70.2
5-6 AM	537	0.0	OFF	537	0	0.00	0	70.0	70.0	70.0
6-7 AM	795	0.0	OFF	795	0	0.00	0	69.7	69.7	69.7
7-8 AM	1007	0.0	OFF	1007	0	0.00	0	69.5	69.5	69.5
8-9 AM	1514	0.0	OFF	1514	0	0.00	0	68.9	68.9	68.9
9-10 AM	2286	0.0	3000	2286	0	0.33	0	67.9	61.4	49.7
10-11 AM	2787	0.0	2999	2787	0	0.59	0	67.3	56.6	41.0
11AM-NOON	3449	0.0	2999	3449	0	3.64	194	66.4	30.9	37.3
NOON-1PM	3771	0.0	3000	3366	405	13.71+	732	65.1	13.2	37.3
1-2 PM	3798	0.0	3000	3004	794	15.76+	834	64.9	12.3	37.3
2-3 PM	3823	0.0	3000	3003	820	15.75+	834	64.7	12.3	37.3
3-4 PM	3735	0.0	3000	3002	732	15.78+	834	65.3	12.3	37.3
4-5 PM	3881	0.0	3000	3002	879	15.73+	834	64.3	12.3	37.3
5-6 PM	3290	0.0	3000	3001	289	15.82+	832	66.6	12.3	37.3
6-7 PM	2770	0.0	2999	2770	0	14.12+	739	67.3	13.0	37.3
7-8 PM	2430	0.0	OFF	2430	0	0.54	50	67.7	57.8	57.8
8-9 PM	2069	0.0	OFF	2069	0	0.00	0	68.2	68.2	68.2
9-10 PM	1700	0.0	OFF	1700	0	0.00	0	68.6	68.6	68.6
10-11 PM	1278	0.0	OFF	1278	0	0.00	0	69.1	69.1	69.1
11PM-MID	820	0.0	OFF	820	0	0.00	0	69.7	69.7	69.7

"OFF" INDICATES NO ROAD WORK (ALL LANES OPEN TO TRAFFIC)

+ INDICATES QUEUEING EXCEEDS USER-SPECIFIED MAXIMUM LIMIT

----- SITE BREAKDOWN DELAYS -----	
BREAKDOWN DURATION (MINS)	0
RANGE OF QUEUE DELAY - MIN (VEH-H) MAX	0.0
AV BREAKDOWNS PER DAY	0.00
AV QUEUE DELAY/DAY (VEH-H)	0.0
AV TOTAL DELAY/DAY (VEH-H)	0.0

----- SITE ACCIDENT DELAYS -----	
BREAKDOWN DURATION (MINS)	0
RANGE OF QUEUE DELAY - MIN (VEH-H) MAX	0
AV BREAKDOWNS PER DAY	0
AV QUEUE DELAY/DAY (VEH-H)	0
AV TOTAL DELAY/DAY (VEH-H)	0

AVERAGE ACCIDENT NUMBERS (PIA/DAY)	
MAIN ROUTE WITHOUT WORKS	0.0274
MAIN ROUTE WITH WORKS	0.0233
'DIVERSION'	0.0051
PIA: Personal Injury Accidents	
IMPACTS ON ROAD USERS	
ROAD USER COSTS PER DAY	\$109,184
CONGESTED HOURS PER DAY*	7

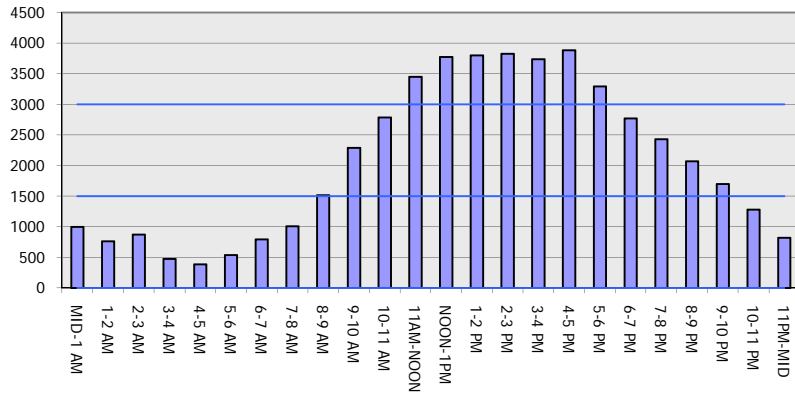
*Delays Exceeding User-Specified Maximum

IH 43/94: BECHER ST TO MITCHELL INTERCHANGE (MILWAUKEE COUNTY)
OFF-PEAK DAY CLOSURE
NO DIVERSION ROUTE (MAX QUEUE METHOD)

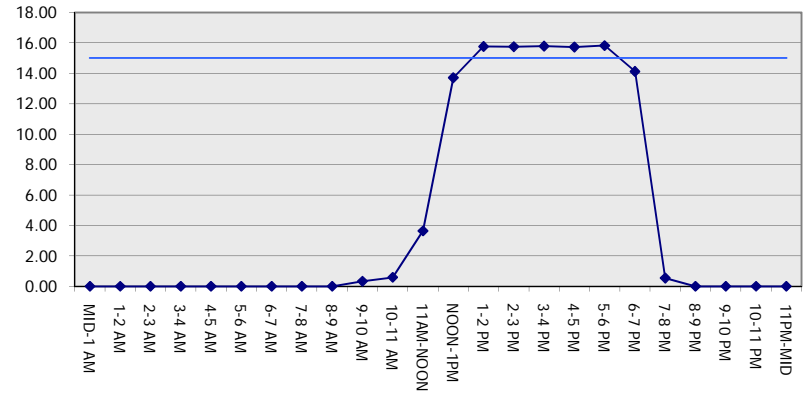
MAY
 Analyzed for 2009
 Construction Season

GRAPHICAL REPRESENTATION OF TRAFFIC MODEL INPUT AND OUTPUT
SUNDAY WESTBOUND DIRECTION

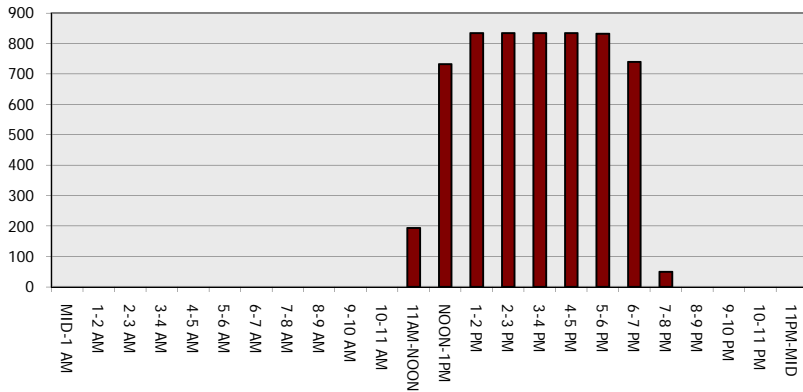
Main Route - Traffic Demand (Vehicles Per Hour)



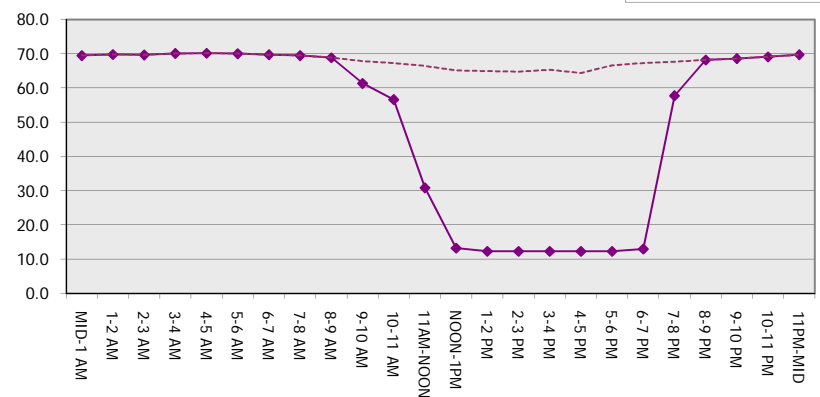
Main Route Average Delay Per Vehicle (Minutes)



Main Route - Average Queue Length (Vehicles)



Main Route - Average Speed (MPH)



IH 43/94: BECHER ST TO MITCHELL INTERCHANGE (MILWAUKEE COUNTY) OFF-PEAK DAY CLOSURE NO DIVERSION ROUTE (MAX QUEUE METHOD)	MAY
	Analyzed for 2009 Construction Season

SUMMARY OF TRAFFIC MODEL OUTPUT

SUNDAY EASTBOUND DIRECTION

TIME OF DAY	FLOWS AND CAPACITY IN VEH/HR						AVERAGE SPEEDS IN MPH			
	MAIN ROUTE		SITE CAPA CITY	FLOW		AV.DEL PER VEH (MINS)	AVERAGE QUEUE (VEH)	MAIN ROUTE		SITE
	DEMAND FLOW	PCT HEAVY		MAIN ROUTE	'DIVER TED'			WITHOUT WORK ZONE	WITH WORK ZONE	
MID-1 AM	950	0.0	OFF	950	0	0.00	0	69.6	69.6	69.6
1-2 AM	559	0.0	OFF	559	0	0.00	0	70.0	70.0	70.0
2-3 AM	392	0.0	OFF	392	0	0.00	0	70.2	70.2	70.2
3-4 AM	285	0.0	OFF	285	0	0.00	0	70.2	70.2	70.2
4-5 AM	249	0.0	OFF	249	0	0.00	0	70.2	70.2	70.2
5-6 AM	406	0.0	OFF	406	0	0.00	0	70.2	70.2	70.2
6-7 AM	662	0.0	OFF	662	0	0.00	0	69.9	69.9	69.9
7-8 AM	925	0.0	OFF	925	0	0.00	0	69.6	69.6	69.6
8-9 AM	1460	0.0	OFF	1460	0	0.00	0	68.9	68.9	68.9
9-10 AM	1919	0.0	3000	1919	0	0.34	0	68.4	61.6	49.7
10-11 AM	2334	0.0	2999	2334	0	0.35	0	67.8	60.9	48.7
11AM-NOON	2911	0.0	2999	2911	0	0.72	3	67.1	54.5	39.0
NOON-1PM	3286	0.0	3000	3286	0	3.15	149	66.6	33.3	37.3
1-2 PM	3194	0.0	2999	3194	0	7.97	403	66.8	18.9	37.3
2-3 PM	3090	0.0	2999	3090	0	10.41	534	66.9	15.5	37.3
3-4 PM	3370	0.0	3000	3229	141	14.10+	742	66.6	13.0	37.3
4-5 PM	3404	0.0	3000	3004	400	15.82+	833	66.5	12.3	37.3
5-6 PM	3240	0.0	3000	3003	238	15.82+	832	66.7	12.3	37.3
6-7 PM	2937	0.0	3000	2937	0	15.37+	806	67.1	12.5	37.3
7-8 PM	2692	0.0	OFF	2692	0	0.91	86	67.4	52.1	52.1
8-9 PM	2291	0.0	OFF	2291	0	0.00	0	67.9	67.9	67.9
9-10 PM	2017	0.0	OFF	2017	0	0.00	0	68.2	68.2	68.2
10-11 PM	1520	0.0	OFF	1520	0	0.00	0	68.9	68.9	68.9
11PM-MID	966	0.0	OFF	966	0	0.00	0	69.6	69.6	69.6

"OFF" INDICATES NO ROAD WORK (ALL LANES OPEN TO TRAFFIC)

+ INDICATES QUEUEING EXCEEDS USER-SPECIFIED MAXIMUM LIMIT

----- SITE BREAKDOWN DELAYS -----	
BREAKDOWN DURATION (MINS)	0
RANGE OF QUEUE DELAY - MIN (VEH-H) MAX	0.0
AV BREAKDOWNS PER DAY	0.00
AV QUEUE DELAY/DAY (VEH-H)	0.0
AV TOTAL DELAY/DAY (VEH-H)	0.0

----- SITE ACCIDENT DELAYS -----	
BREAKDOWN DURATION (MINS)	0
RANGE OF QUEUE DELAY - MIN (VEH-H) MAX	0
AV BREAKDOWNS PER DAY	0
AV QUEUE DELAY/DAY (VEH-H)	0
AV TOTAL DELAY/DAY (VEH-H)	0

AVERAGE ACCIDENT NUMBERS (PIA/DAY)	
MAIN ROUTE WITHOUT WORKS	0.0251
MAIN ROUTE WITH WORKS	0.0227
'DIVERSION'	0.0010

PIA: Personal Injury Accidents

ECONOMIC IMPACT ON ROAD USERS	
ROAD USER COSTS PER DAY	\$74,331
CONGESTED HOURS PER DAY*	4

*Delays Exceeding User-Specified Maximum

IH 43/94: BECHER ST TO MITCHELL INTERCHANGE (MILWAUKEE COUNTY)
OFF-PEAK DAY CLOSURE
NO DIVERSION ROUTE (MAX QUEUE METHOD)

MAY
 Analyzed for 2009
 Construction Season

GRAPHICAL REPRESENTATION OF TRAFFIC MODEL INPUT AND OUTPUT
SUNDAY EASTBOUND DIRECTION

