

**IH 94: STH 181 TO USH 41 (MILWAUKEE COUNTY)
OFF-PEAK DAY 2 LANE CLOSURE
NO DIVERSION ROUTE (MAX QUEUE METHOD)**

OCTOBER
Analyzed for 2009
Construction Season

SUMMARY OF TRAFFIC MODEL OUTPUT
SUNDAY WESTBOUND DIRECTION

TIME OF DAY	FLOWS AND CAPACITY IN VEH/HR						AVERAGE SPEEDS IN MPH				
	MAIN ROUTE		SITE CAPA CITY	FLOW		AV.DEL PER VEH (MINS)	AVERAGE QUEUE (VEH)	MAIN ROUTE		SITE	
	DEMAND FLOW	PCT HEAVY		MAIN ROUTE	'DIVER TED'			WITHOUT WORK ZONE	WITH WORK ZONE		
MID-1 AM	1556	0.0	OFF	1556	0	0.00	0	68.8	68.8	68.8	
1-2 AM	1149	0.0	OFF	1149	0	0.00	0	69.3	69.3	69.3	
2-3 AM	1193	0.0	OFF	1193	0	0.00	0	69.2	69.2	69.2	
3-4 AM	605	0.0	OFF	605	0	0.00	0	70.0	70.0	70.0	
4-5 AM	364	0.0	OFF	364	0	0.00	0	70.2	70.2	70.2	
5-6 AM	470	0.0	OFF	470	0	0.00	0	70.2	70.2	70.2	
6-7 AM	895	0.0	OFF	895	0	0.00	0	69.6	69.6	69.6	
7-8 AM	1102	0.0	OFF	1102	0	0.00	0	69.4	69.4	69.4	
8-9 AM	1498	0.0	OFF	1498	0	0.00	0	68.9	68.9	68.9	
9-10 AM	2113	0.0	1499	1975	138	8.23+	238	68.1	14.2	30.8	
10-11 AM	2892	0.0	1500	1488	1404	16.59+	407	67.1	8.1	30.8	
11AM-NOON	3512	0.0	1499	1496	2016	16.59+	407	66.4	8.1	30.8	
NOON-1PM	3838	0.0	1500	1500	2338	16.54+	408	64.6	8.1	30.8	
1-2 PM	3740	0.0	1500	1500	2240	16.57+	408	65.3	8.1	30.8	
2-3 PM	3788	0.0	1500	1500	2288	16.56+	408	65.0	8.1	30.8	
3-4 PM	3731	0.0	1500	1500	2231	16.57+	408	65.4	8.1	30.8	
4-5 PM	3598	0.0	1500	1498	2099	16.60+	408	66.3	8.1	30.8	
5-6 PM	3227	0.0	1499	1492	1736	16.59+	407	66.7	8.1	30.8	
6-7 PM	2876	0.0	1499	1490	1386	16.58+	406	67.1	8.1	30.8	
7-8 PM	2380	0.0	OFF	2380	0	0.28	26	67.8	59.8	59.8	
8-9 PM	1776	0.0	OFF	1776	0	0.00	0	68.5	68.5	68.5	
9-10 PM	1675	0.0	OFF	1675	0	0.00	0	68.7	68.7	68.7	
10-11 PM	1411	0.0	OFF	1411	0	0.00	0	69.0	69.0	69.0	
11PM-MID	1047	0.0	OFF	1047	0	0.00	0	69.4	69.4	69.4	

"OFF" INDICATES NO ROAD WORK (ALL LANES OPEN TO TRAFFIC)

+ INDICATES QUEUEING EXCEEDS USER-SPECIFIED MAXIMUM LIMIT

----- SITE BREAKDOWN DELAYS -----	
BREAKDOWN DURATION (MINS)	0
RANGE OF QUEUE DELAY - MIN (VEH-H) MAX	0.0
AV BREAKDOWNS PER DAY	0.00
AV QUEUE DELAY/DAY (VEH-H)	0.0
AV TOTAL DELAY/DAY (VEH-H)	0.0

----- SITE ACCIDENT DELAYS -----	
BREAKDOWN DURATION (MINS)	0
RANGE OF QUEUE DELAY - MIN (VEH-H) MAX	0
AV BREAKDOWNS PER DAY	0
AV QUEUE DELAY/DAY (VEH-H)	0
AV TOTAL DELAY/DAY (VEH-H)	0

AVERAGE ACCIDENT NUMBERS (PIA/DAY)	
MAIN ROUTE WITHOUT WORKS	0.0193
MAIN ROUTE WITH WORKS	0.0114
'DIVERSION'	0.0158
PIA: Personal Injury Accidents	
IMPACTS ON ROAD USERS	
ROAD USER COSTS PER DAY	\$149,024
CONGESTED HOURS PER DAY*	10

*Delays Exceeding User-Specified Maximum

IH 94: STH 181 TO USH 41 (MILWAUKEE COUNTY)
OFF-PEAK DAY 2 LANE CLOSURE
NO DIVERSION ROUTE (MAX QUEUE METHOD)

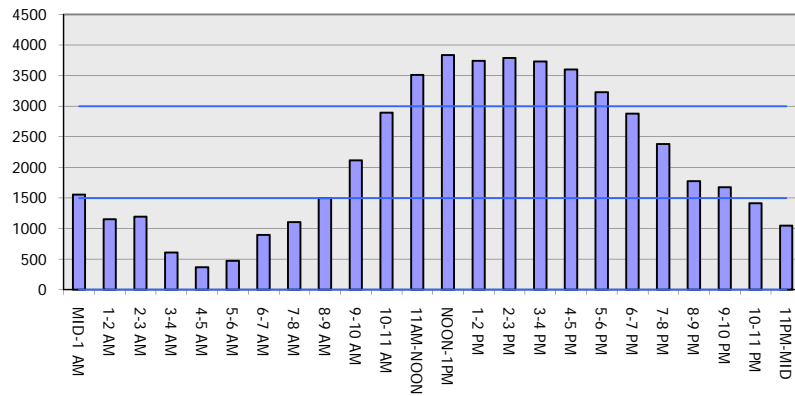
OCTOBER

Analyzed for 2009
 Construction Season

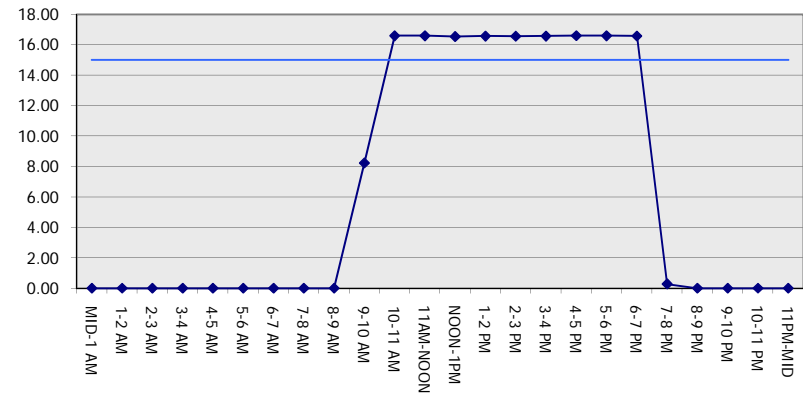
GRAPHICAL REPRESENTATION OF TRAFFIC MODEL INPUT AND OUTPUT

SUNDAY WESTBOUND DIRECTION

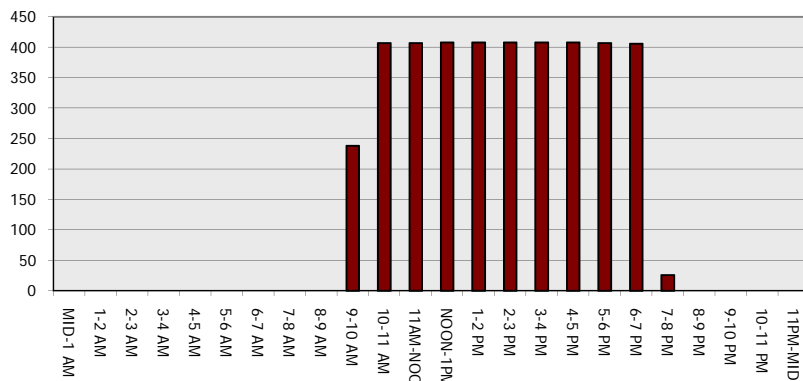
Main Route - Traffic Demand (Vehicles Per Hour)



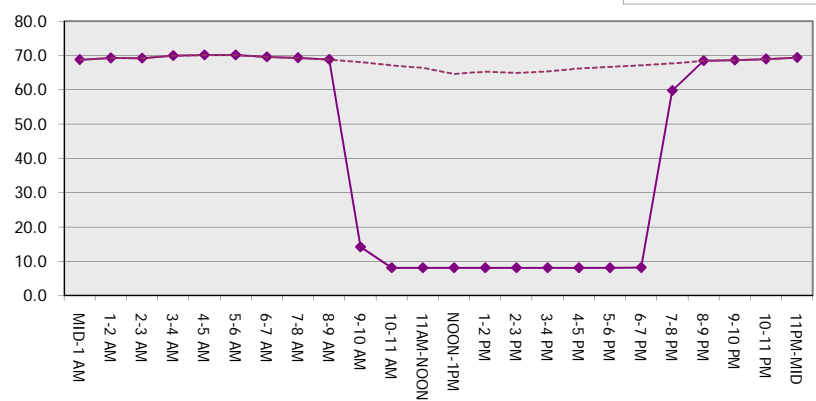
Main Route Average Delay Per Vehicle (Minutes)



Main Route - Average Queue Length (Vehicles)



Main Route - Average Speed (MPH)



**IH 94: STH 181 TO USH 41 (MILWAUKEE COUNTY)
OFF-PEAK DAY 2 LANE CLOSURE
NO DIVERSION ROUTE (MAX QUEUE METHOD)**

OCTOBER
Analyzed for 2009
Construction Season

SUMMARY OF TRAFFIC MODEL OUTPUT
SUNDAY EASTBOUND DIRECTION

TIME OF DAY	FLOWS AND CAPACITY IN VEH/HR						AVERAGE SPEEDS IN MPH			
	MAIN ROUTE		SITE CAPA CITY	FLOW		AV.DEL PER VEH (MINS)	AVERAGE QUEUE (VEH)	MAIN ROUTE		SITE
	DEMAND FLOW	PCT HEAVY		MAIN ROUTE	'DIVER TED'			WITHOUT WORK ZONE	WITH WORK ZONE	
MID-1 AM	1293	0.0	OFF	1293	0	0.00	0	69.1	69.1	69.1
1-2 AM	744	0.0	OFF	744	0	0.00	0	69.8	69.8	69.8
2-3 AM	586	0.0	OFF	586	0	0.00	0	70.0	70.0	70.0
3-4 AM	343	0.0	OFF	343	0	0.00	0	70.2	70.2	70.2
4-5 AM	272	0.0	OFF	272	0	0.00	0	70.2	70.2	70.2
5-6 AM	457	0.0	OFF	457	0	0.00	0	70.2	70.2	70.2
6-7 AM	903	0.0	OFF	903	0	0.00	0	69.6	69.6	69.6
7-8 AM	1199	0.0	OFF	1199	0	0.00	0	69.2	69.2	69.2
8-9 AM	1599	0.0	OFF	1599	0	0.00	0	68.7	68.7	68.7
9-10 AM	2165	0.0	1499	1900	264	9.25+	257	68.1	12.9	30.8
10-11 AM	2630	0.0	1499	1501	1129	16.54+	405	67.4	8.1	30.8
11AM-NOON	2992	0.0	1500	1502	1491	16.59+	407	67.0	8.1	30.8
NOON-1PM	3392	0.0	1500	1500	1892	16.61+	408	66.5	8.1	30.8
1-2 PM	3509	0.0	1500	1500	2009	16.61+	408	66.4	8.1	30.8
2-3 PM	3412	0.0	1500	1500	1912	16.61+	408	66.5	8.1	30.8
3-4 PM	3572	0.0	1500	1500	2072	16.60+	408	66.3	8.1	30.8
4-5 PM	3616	0.0	1500	1500	2116	16.60+	408	66.1	8.1	30.8
5-6 PM	3633	0.0	1500	1500	2133	16.59+	408	66.0	8.1	30.8
6-7 PM	3750	0.0	1500	1500	2250	16.57+	408	65.2	8.1	30.8
7-8 PM	2951	0.0	OFF	2951	0	0.28	26	67.1	59.2	59.2
8-9 PM	2136	0.0	OFF	2136	0	0.00	0	68.1	68.1	68.1
9-10 PM	1881	0.0	OFF	1881	0	0.00	0	68.4	68.4	68.4
10-11 PM	1411	0.0	OFF	1411	0	0.00	0	69.0	69.0	69.0
11PM-MID	1077	0.0	OFF	1077	0	0.00	0	69.4	69.4	69.4

"OFF" INDICATES NO ROAD WORK (ALL LANES OPEN TO TRAFFIC)

+ INDICATES QUEUEING EXCEEDS USER-SPECIFIED MAXIMUM LIMIT

----- SITE BREAKDOWN DELAYS -----	
BREAKDOWN DURATION (MINS)	0
RANGE OF QUEUE DELAY - MIN (VEH-H) MAX	0.0
AV BREAKDOWNS PER DAY	0.00
AV QUEUE DELAY/DAY (VEH-H)	0.0
AV TOTAL DELAY/DAY (VEH-H)	0.0

----- SITE ACCIDENT DELAYS -----	
BREAKDOWN DURATION (MINS)	0
RANGE OF QUEUE DELAY - MIN (VEH-H) MAX	0
AV BREAKDOWNS PER DAY	0
AV QUEUE DELAY/DAY (VEH-H)	0
AV TOTAL DELAY/DAY (VEH-H)	0

AVERAGE ACCIDENT NUMBERS (PIA/DAY)	
MAIN ROUTE WITHOUT WORKS	0.0189
MAIN ROUTE WITH WORKS	0.0113
'DIVERSION'	0.0153

PIA: Personal Injury Accidents

ECONOMIC IMPACT ON ROAD USERS	
ROAD USER COSTS PER DAY	\$146,733
CONGESTED HOURS PER DAY*	10

*Delays Exceeding User-Specified Maximum

**IH 94: STH 181 TO USH 41 (MILWAUKEE COUNTY)
OFF-PEAK DAY 2 LANE CLOSURE
NO DIVERSION ROUTE (MAX QUEUE METHOD)**

OCTOBER

Analyzed for 2009
Construction Season

GRAPHICAL REPRESENTATION OF TRAFFIC MODEL INPUT AND OUTPUT
SUNDAY EASTBOUND DIRECTION

