

**IH 94: STH 181 TO USH 41 (MILWAUKEE COUNTY)
OFF-PEAK DAY CLOSURE
NO DIVERSION ROUTE (MAX QUEUE METHOD)**

OCTOBER
Analyzed for 2009
Construction Season

SUMMARY OF TRAFFIC MODEL OUTPUT
SUNDAY WESTBOUND DIRECTION

TIME OF DAY	FLOWS AND CAPACITY IN VEH/HR						AVERAGE SPEEDS IN MPH				
	MAIN ROUTE		SITE CAPA CITY	FLOW		AV.DEL PER VEH (MINS)	AVERAGE QUEUE (VEH)	MAIN ROUTE		SITE	
	DEMAND FLOW	PCT HEAVY		MAIN ROUTE	'DIVER TED'			WITHOUT WORK ZONE	WITH WORK ZONE		
MID-1 AM	1556	0.0	OFF	1556	0	0.00	0	68.8	68.8	68.8	
1-2 AM	1149	0.0	OFF	1149	0	0.00	0	69.3	69.3	69.3	
2-3 AM	1193	0.0	OFF	1193	0	0.00	0	69.2	69.2	69.2	
3-4 AM	605	0.0	OFF	605	0	0.00	0	70.0	70.0	70.0	
4-5 AM	364	0.0	OFF	364	0	0.00	0	70.2	70.2	70.2	
5-6 AM	470	0.0	OFF	470	0	0.00	0	70.2	70.2	70.2	
6-7 AM	895	0.0	OFF	895	0	0.00	0	69.6	69.6	69.6	
7-8 AM	1102	0.0	OFF	1102	0	0.00	0	69.4	69.4	69.4	
8-9 AM	1498	0.0	OFF	1498	0	0.00	0	68.9	68.9	68.9	
9-10 AM	2113	0.0	2999	2113	0	0.33	0	68.1	58.8	49.7	
10-11 AM	2892	0.0	2999	2892	0	0.76	8	67.1	49.5	39.7	
11AM-NOON	3512	0.0	3000	3512	0	4.69	259	66.4	21.4	37.3	
NOON-1PM	3838	0.0	3000	3372	466	15.35+	817	64.6	11.0	37.3	
1-2 PM	3740	0.0	2999	2984	756	16.61+	879	65.3	10.7	37.3	
2-3 PM	3788	0.0	2999	2991	797	16.60+	879	65.0	10.7	37.3	
3-4 PM	3731	0.0	2999	2995	736	16.61+	879	65.4	10.7	37.3	
4-5 PM	3598	0.0	2999	2996	601	16.63+	878	66.3	10.7	37.3	
5-6 PM	3227	0.0	3000	2997	230	16.60+	875	66.7	10.7	37.3	
6-7 PM	2876	0.0	2999	2869	7	15.94+	838	67.1	10.9	37.3	
7-8 PM	2380	0.0	OFF	2380	0	0.80	77	67.8	49.1	49.1	
8-9 PM	1776	0.0	OFF	1776	0	0.00	0	68.5	68.5	68.5	
9-10 PM	1675	0.0	OFF	1675	0	0.00	0	68.7	68.7	68.7	
10-11 PM	1411	0.0	OFF	1411	0	0.00	0	69.0	69.0	69.0	
11PM-MID	1047	0.0	OFF	1047	0	0.00	0	69.4	69.4	69.4	

"OFF" INDICATES NO ROAD WORK (ALL LANES OPEN TO TRAFFIC)

+ INDICATES QUEUEING EXCEEDS USER-SPECIFIED MAXIMUM LIMIT

----- SITE BREAKDOWN DELAYS -----	
BREAKDOWN DURATION (MINS)	0
RANGE OF QUEUE DELAY - MIN (VEH-H) MAX	0.0
AV BREAKDOWNS PER DAY	0.00
AV QUEUE DELAY/DAY (VEH-H)	0.0
AV TOTAL DELAY/DAY (VEH-H)	0.0

----- SITE ACCIDENT DELAYS -----	
BREAKDOWN DURATION (MINS)	0
RANGE OF QUEUE DELAY - MIN (VEH-H) MAX	0
AV BREAKDOWNS PER DAY	0
AV QUEUE DELAY/DAY (VEH-H)	0
AV TOTAL DELAY/DAY (VEH-H)	0

AVERAGE ACCIDENT NUMBERS (PIA/DAY)	
MAIN ROUTE WITHOUT WORKS	0.0193
MAIN ROUTE WITH WORKS	0.0159
'DIVERSION'	0.0032
PIA: Personal Injury Accidents	
IMPACTS ON ROAD USERS	
ROAD USER COSTS PER DAY	\$116,406
CONGESTED HOURS PER DAY*	7

*Delays Exceeding User-Specified Maximum

**IH 94: STH 181 TO USH 41 (MILWAUKEE COUNTY)
OFF-PEAK DAY CLOSURE
NO DIVERSION ROUTE (MAX QUEUE METHOD)**

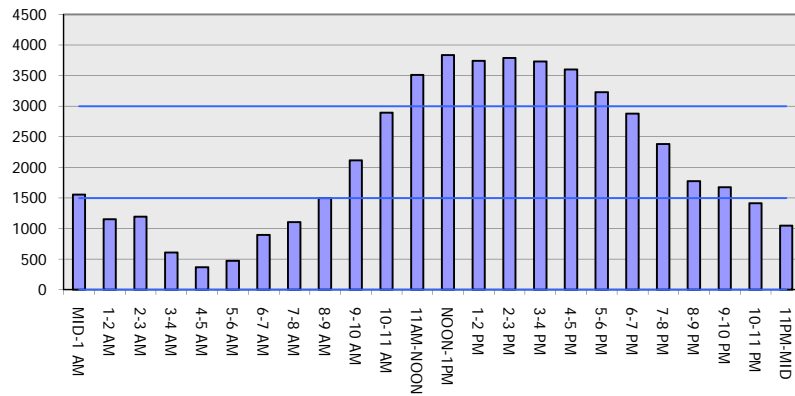
OCTOBER

Analyzed for 2009
Construction Season

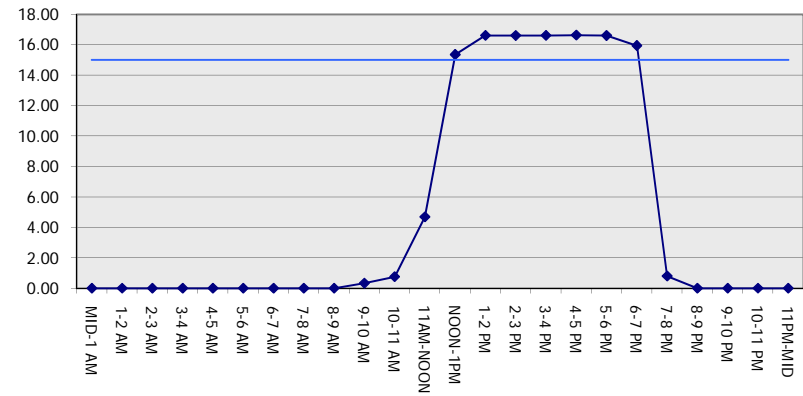
GRAPHICAL REPRESENTATION OF TRAFFIC MODEL INPUT AND OUTPUT

SUNDAY WESTBOUND DIRECTION

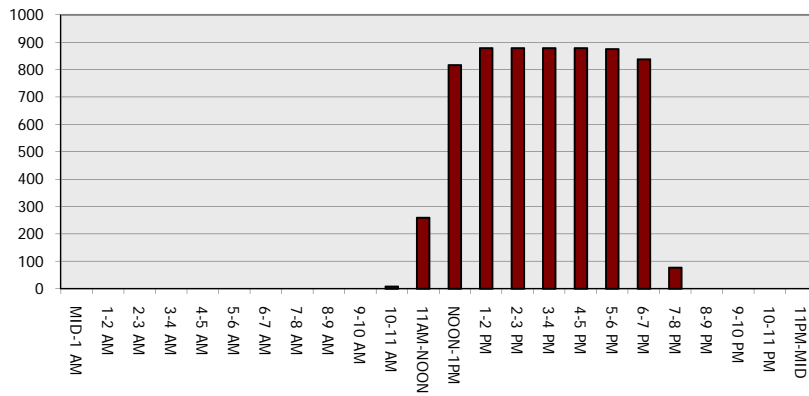
Main Route - Traffic Demand (Vehicles Per Hour)



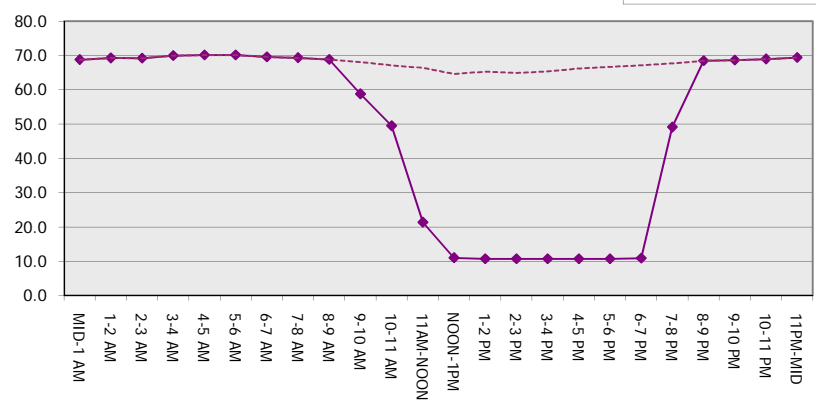
Main Route Average Delay Per Vehicle (Minutes)



Main Route - Average Queue Length (Vehicles)



Main Route - Average Speed (MPH)



IH 94: STH 181 TO USH 41 (MILWAUKEE COUNTY) OFF-PEAK DAY CLOSURE NO DIVERSION ROUTE (MAX QUEUE METHOD)	OCTOBER
	Analyzed for 2009 Construction Season

SUMMARY OF TRAFFIC MODEL OUTPUT

SUNDAY EASTBOUND DIRECTION

TIME OF DAY	FLOWS AND CAPACITY IN VEH/HR							AVERAGE SPEEDS IN MPH		
	MAIN ROUTE		SITE CAPA CITY	FLOW		AV.DEL PER VEH (MINS)	AVERAGE QUEUE (VEH)	MAIN ROUTE		SITE
	DEMAND FLOW	PCT HEAVY		MAIN ROUTE	'DIVER TED'			WITHOUT WORK ZONE	WITH WORK ZONE	
MID-1 AM	1293	0.0	OFF	1293	0	0.00	0	69.1	69.1	69.1
1-2 AM	744	0.0	OFF	744	0	0.00	0	69.8	69.8	69.8
2-3 AM	586	0.0	OFF	586	0	0.00	0	70.0	70.0	70.0
3-4 AM	343	0.0	OFF	343	0	0.00	0	70.2	70.2	70.2
4-5 AM	272	0.0	OFF	272	0	0.00	0	70.2	70.2	70.2
5-6 AM	457	0.0	OFF	457	0	0.00	0	70.2	70.2	70.2
6-7 AM	903	0.0	OFF	903	0	0.00	0	69.6	69.6	69.6
7-8 AM	1199	0.0	OFF	1199	0	0.00	0	69.2	69.2	69.2
8-9 AM	1599	0.0	OFF	1599	0	0.00	0	68.7	68.7	68.7
9-10 AM	2165	0.0	3000	2165	0	0.33	0	68.1	58.8	49.7
10-11 AM	2630	0.0	2999	2630	0	0.49	0	67.4	55.0	44.0
11AM-NOON	2992	0.0	2999	2992	0	0.87	10	67.0	47.6	38.1
NOON-1PM	3392	0.0	3000	3392	0	4.28	223	66.5	22.4	37.3
1-2 PM	3509	0.0	3000	3505	4	12.97+	689	66.4	11.9	37.3
2-3 PM	3412	0.0	2999	2950	463	16.57+	874	66.5	10.7	37.3
3-4 PM	3572	0.0	2999	2995	577	16.63+	878	66.3	10.7	37.3
4-5 PM	3616	0.0	2999	2997	619	16.63+	878	66.1	10.7	37.3
5-6 PM	3633	0.0	3000	2998	634	16.63+	878	66.0	10.7	37.3
6-7 PM	3750	0.0	2999	2999	751	16.60+	879	65.2	10.7	37.3
7-8 PM	2951	0.0	OFF	2951	0	1.35	127	67.1	41.2	41.2
8-9 PM	2136	0.0	OFF	2136	0	0.00	0	68.1	68.1	68.1
9-10 PM	1881	0.0	OFF	1881	0	0.00	0	68.4	68.4	68.4
10-11 PM	1411	0.0	OFF	1411	0	0.00	0	69.0	69.0	69.0
11PM-MID	1077	0.0	OFF	1077	0	0.00	0	69.4	69.4	69.4

"OFF" INDICATES NO ROAD WORK (ALL LANES OPEN TO TRAFFIC)

+ INDICATES QUEUEING EXCEEDS USER-SPECIFIED MAXIMUM LIMIT

----- SITE BREAKDOWN DELAYS -----	
BREAKDOWN DURATION (MINS)	0
RANGE OF QUEUE DELAY - MIN (VEH-H) MAX	0.0
AV BREAKDOWNS PER DAY	0.00
AV QUEUE DELAY/DAY (VEH-H)	0.0
AV TOTAL DELAY/DAY (VEH-H)	0.0

----- SITE ACCIDENT DELAYS -----	
BREAKDOWN DURATION (MINS)	0
RANGE OF QUEUE DELAY - MIN (VEH-H) MAX	0
AV BREAKDOWNS PER DAY	0
AV QUEUE DELAY/DAY (VEH-H)	0
AV TOTAL DELAY/DAY (VEH-H)	0

AVERAGE ACCIDENT NUMBERS (PIA/DAY)	
MAIN ROUTE WITHOUT WORKS	0.0189
MAIN ROUTE WITH WORKS	0.0158
'DIVERSION'	0.0027

PIA: Personal Injury Accidents

ECONOMIC IMPACT ON ROAD USERS	
ROAD USER COSTS PER DAY	\$100,287
CONGESTED HOURS PER DAY*	6

*Delays Exceeding User-Specified Maximum

**IH 94: STH 181 TO USH 41 (MILWAUKEE COUNTY)
OFF-PEAK DAY CLOSURE
NO DIVERSION ROUTE (MAX QUEUE METHOD)**

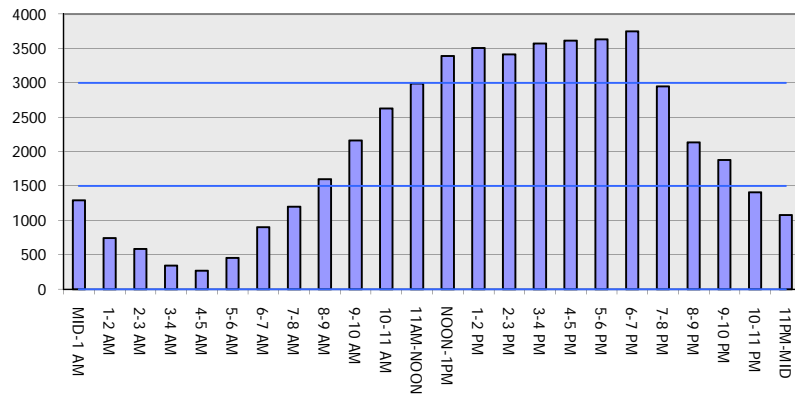
OCTOBER

Analyzed for 2009
Construction Season

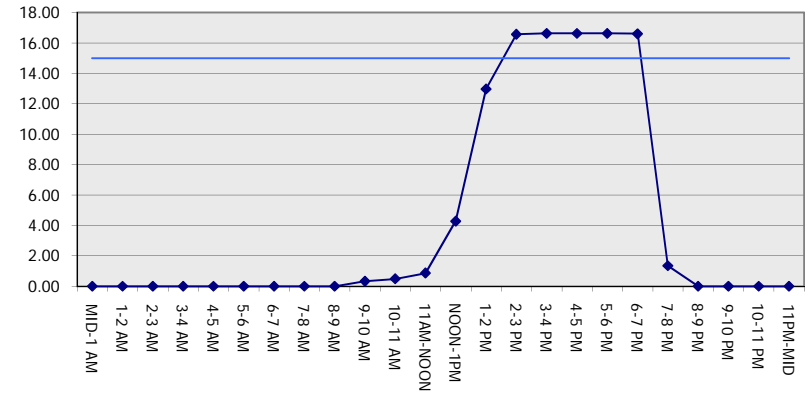
GRAPHICAL REPRESENTATION OF TRAFFIC MODEL INPUT AND OUTPUT

SUNDAY EASTBOUND DIRECTION

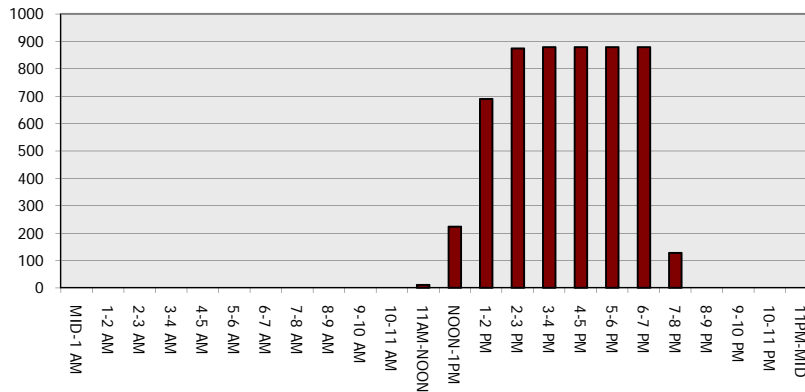
Main Route - Traffic Demand (Vehicles Per Hour)



Main Route Average Delay Per Vehicle (Minutes)



Main Route - Average Queue Length (Vehicles)



Main Route - Average Speed (MPH)

