

IH 94: STH 181 TO USH 41 (MILWAUKEE COUNTY) OFF-PEAK DAY CLOSURE NO DIVERSION ROUTE (MAX QUEUE METHOD)	OCTOBER
	Analyzed for 2009 Construction Season

SUMMARY OF TRAFFIC MODEL OUTPUT

MON-THUR WESTBOUND DIRECTION

TIME OF DAY	FLOWS AND CAPACITY IN VEH/HR						AVERAGE SPEEDS IN MPH			
	MAIN ROUTE		SITE CAPA CITY	FLOW		AV.DEL PER VEH (MINS)	AVERAGE QUEUE (VEH)	MAIN ROUTE		SITE
	DEMAND FLOW	PCT HEAVY		MAIN ROUTE	'DIVER TED'			WITHOUT WORK ZONE	WITH WORK ZONE	
MID-1 AM	662	0.0	OFF	662	0	0.00	0	69.9	69.9	69.9
1-2 AM	419	0.0	OFF	419	0	0.00	0	70.2	70.2	70.2
2-3 AM	332	0.0	OFF	332	0	0.00	0	70.2	70.2	70.2
3-4 AM	383	0.0	OFF	383	0	0.00	0	70.2	70.2	70.2
4-5 AM	710	0.0	OFF	710	0	0.00	0	69.9	69.9	69.9
5-6 AM	2179	0.0	OFF	2179	0	0.00	0	68.0	68.0	68.0
6-7 AM	4398	0.0	OFF	4398	0	0.00	0	60.8	60.8	60.8
7-8 AM	5803	0.0	OFF	5803	0	0.00	0	51.2	51.2	51.2
8-9 AM	4964	0.0	OFF	4964	0	0.00	0	56.9	56.9	56.9
9-10 AM	3791	0.0	OFF	3791	0	0.00	0	65.0	65.0	65.0
10-11 AM	3677	0.0	2999	3677	0	5.66	328	65.8	19.3	37.3
11AM-NOON	4109	0.0	2999	3214	896	16.22+	865	62.8	10.7	37.3
NOON-1PM	4390	0.0	3000	3025	1366	16.86+	906	60.9	10.6	37.3
1-2 PM	4636	0.0	3000	3002	1635	17.08+	924	59.2	10.5	37.3
2-3 PM	5724	0.0	3000	3000	2725	16.70+	932	51.7	10.4	37.3
3-4 PM	6293	0.0	OFF	6293	0	10.51	1063	47.9	10.6	10.6
4-5 PM	5721	0.0	OFF	5721	0	10.81	1070	51.8	10.6	10.6
5-6 PM	5476	0.0	OFF	5476	0	6.89	669	53.5	15.0	15.0
6-7 PM	4916	0.0	OFF	4916	0	0.89	76	57.3	42.2	42.2
7-8 PM	3455	0.0	OFF	3455	0	0.00	0	66.4	66.4	66.4
8-9 PM	2838	0.0	OFF	2838	0	0.00	0	67.2	67.2	67.2
9-10 PM	2456	0.0	OFF	2456	0	0.00	0	67.7	67.7	67.7
10-11 PM	1804	0.0	OFF	1804	0	0.00	0	68.5	68.5	68.5
11PM-MID	1259	0.0	OFF	1259	0	0.00	0	69.2	69.2	69.2

"OFF" INDICATES NO ROAD WORK (ALL LANES OPEN TO TRAFFIC)

+ INDICATES QUEUEING EXCEEDS USER-SPECIFIED MAXIMUM LIMIT

----- SITE BREAKDOWN DELAYS -----	
BREAKDOWN DURATION (MINS)	0
RANGE OF QUEUE DELAY - MIN (VEH-H) MAX	0.0
AV BREAKDOWNS PER DAY	0.00
AV QUEUE DELAY/DAY (VEH-H)	0.0
AV TOTAL DELAY/DAY (VEH-H)	0.0

----- SITE ACCIDENT DELAYS -----	
BREAKDOWN DURATION (MINS)	0
RANGE OF QUEUE DELAY - MIN (VEH-H) MAX	0
AV BREAKDOWNS PER DAY	0
AV QUEUE DELAY/DAY (VEH-H)	0
AV TOTAL DELAY/DAY (VEH-H)	0

AVERAGE ACCIDENT NUMBERS (PIA/DAY)	
MAIN ROUTE WITHOUT WORKS	0.0307
MAIN ROUTE WITH WORKS	0.0271
'DIVERSION'	0.0059
PIA: Personal Injury Accidents	
IMPACTS ON ROAD USERS	
ROAD USER COSTS PER DAY	\$85,944
CONGESTED HOURS PER DAY*	4

*Delays Exceeding User-Specified Maximum

**IH 94: STH 181 TO USH 41 (MILWAUKEE COUNTY)
OFF-PEAK DAY CLOSURE
NO DIVERSION ROUTE (MAX QUEUE METHOD)**

OCTOBER

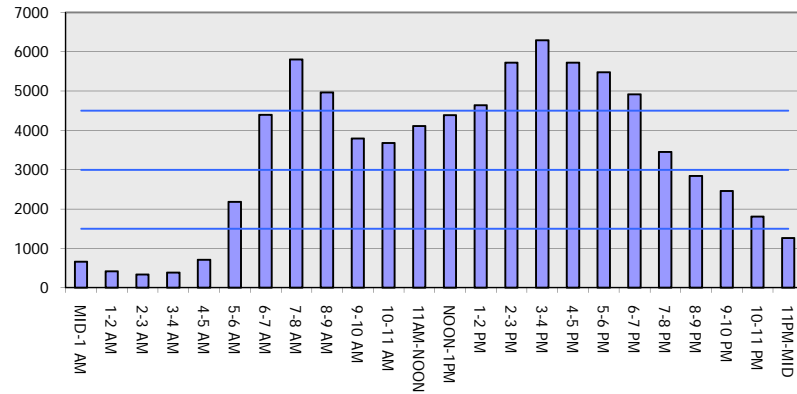
Analyzed for 2009
Construction Season

GRAPHICAL REPRESENTATION OF TRAFFIC MODEL INPUT AND OUTPUT

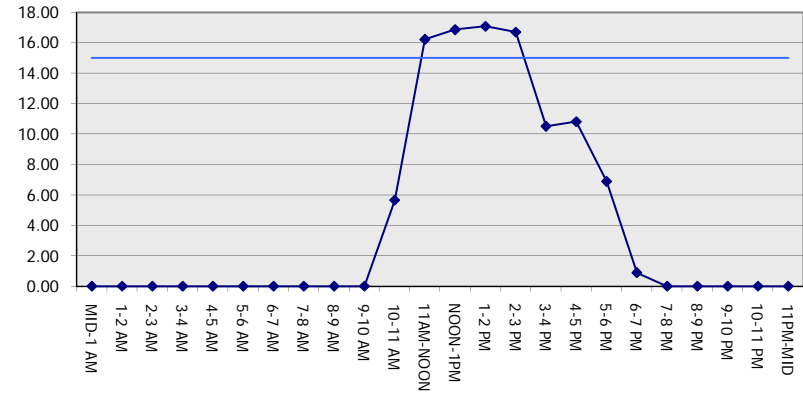
MON-THUR

WESTBOUND DIRECTION

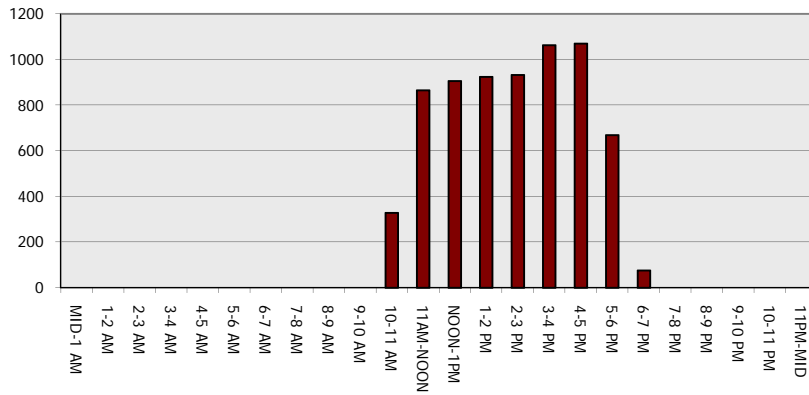
Main Route - Traffic Demand (Vehicles Per Hour)



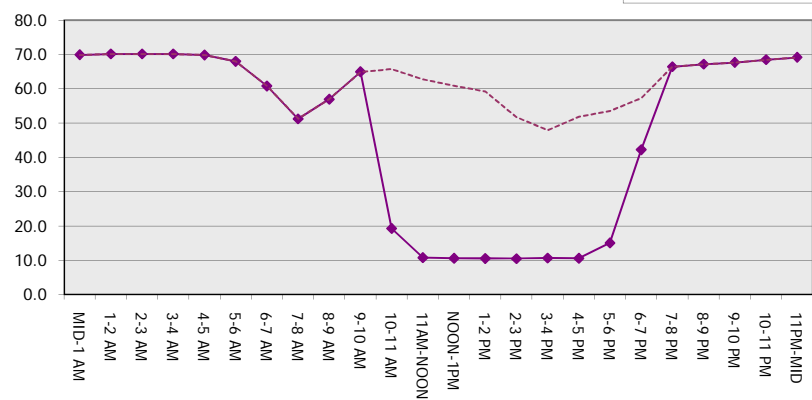
Main Route Average Delay Per Vehicle (Minutes)



Main Route - Average Queue Length (Vehicles)



Main Route - Average Speed (MPH)



IH 94: STH 181 TO USH 41 (MILWAUKEE COUNTY) OFF-PEAK DAY CLOSURE NO DIVERSION ROUTE (MAX QUEUE METHOD)	OCTOBER
	Analyzed for 2009 Construction Season

SUMMARY OF TRAFFIC MODEL OUTPUT

MON-THUR EASTBOUND DIRECTION

TIME OF DAY	FLOWS AND CAPACITY IN VEH/HR						AVERAGE SPEEDS IN MPH			
	MAIN ROUTE		SITE CAPA CITY	FLOW		AV.DEL PER VEH (MINS)	AVERAGE QUEUE (VEH)	MAIN ROUTE		SITE
	DEMAND FLOW	PCT HEAVY		MAIN ROUTE	'DIVER TED'			WITHOUT WORK ZONE	WITH WORK ZONE	
MID-1 AM	576	0.0	OFF	576	0	0.00	0	70.0	70.0	70.0
1-2 AM	354	0.0	OFF	354	0	0.00	0	70.2	70.2	70.2
2-3 AM	314	0.0	OFF	314	0	0.00	0	70.2	70.2	70.2
3-4 AM	360	0.0	OFF	360	0	0.00	0	70.2	70.2	70.2
4-5 AM	582	0.0	OFF	582	0	0.00	0	70.0	70.0	70.0
5-6 AM	2208	0.0	OFF	2208	0	0.00	0	68.0	68.0	68.0
6-7 AM	5229	0.0	OFF	5229	0	0.00	0	55.1	55.1	55.1
7-8 AM	5735	0.0	OFF	5735	0	0.00	0	51.7	51.7	51.7
8-9 AM	5010	0.0	OFF	5010	0	0.00	0	56.6	56.6	56.6
9-10 AM	4378	0.0	OFF	4378	0	0.00	0	60.9	60.9	60.9
10-11 AM	3789	0.0	2999	3789	0	6.97	406	65.0	17.0	37.3
11AM-NOON	3997	0.0	2999	3085	912	16.67+	888	63.5	10.6	37.3
NOON-1PM	4115	0.0	3000	3011	1104	16.56+	884	62.7	10.6	37.3
1-2 PM	4154	0.0	3000	3008	1145	16.60+	887	62.5	10.6	37.3
2-3 PM	4688	0.0	2999	3034	1654	17.10+	926	58.8	10.4	37.3
3-4 PM	5043	0.0	OFF	5043	0	4.82	449	56.4	19.5	19.5
4-5 PM	5029	0.0	OFF	5029	0	0.00	0	56.5	56.5	56.5
5-6 PM	5160	0.0	OFF	5160	0	0.00	0	55.6	55.6	55.6
6-7 PM	4476	0.0	OFF	4476	0	0.00	0	60.3	60.3	60.3
7-8 PM	3443	0.0	OFF	3443	0	0.00	0	66.4	66.4	66.4
8-9 PM	2845	0.0	OFF	2845	0	0.00	0	67.2	67.2	67.2
9-10 PM	2688	0.0	OFF	2688	0	0.00	0	67.4	67.4	67.4
10-11 PM	1957	0.0	OFF	1957	0	0.00	0	68.3	68.3	68.3
11PM-MID	1257	0.0	OFF	1257	0	0.00	0	69.2	69.2	69.2

"OFF" INDICATES NO ROAD WORK (ALL LANES OPEN TO TRAFFIC)

+ INDICATES QUEUEING EXCEEDS USER-SPECIFIED MAXIMUM LIMIT

----- SITE BREAKDOWN DELAYS -----	
BREAKDOWN DURATION (MINS)	0
RANGE OF QUEUE DELAY - MIN (VEH-H) MAX	0.0
AV BREAKDOWNS PER DAY	0.00
AV QUEUE DELAY/DAY (VEH-H)	0.0
AV TOTAL DELAY/DAY (VEH-H)	0.0

----- SITE ACCIDENT DELAYS -----	
BREAKDOWN DURATION (MINS)	0
RANGE OF QUEUE DELAY - MIN (VEH-H) MAX	0
AV BREAKDOWNS PER DAY	0
AV QUEUE DELAY/DAY (VEH-H)	0
AV TOTAL DELAY/DAY (VEH-H)	0

AVERAGE ACCIDENT NUMBERS (PIA/DAY)	
MAIN ROUTE WITHOUT WORKS	0.0295
MAIN ROUTE WITH WORKS	0.0266
'DIVERSION'	0.0043

PIA: Personal Injury Accidents

ECONOMIC IMPACT ON ROAD USERS	
ROAD USER COSTS PER DAY	\$56,796
CONGESTED HOURS PER DAY*	4

*Delays Exceeding User-Specified Maximum

**IH 94: STH 181 TO USH 41 (MILWAUKEE COUNTY)
OFF-PEAK DAY CLOSURE
NO DIVERSION ROUTE (MAX QUEUE METHOD)**

OCTOBER

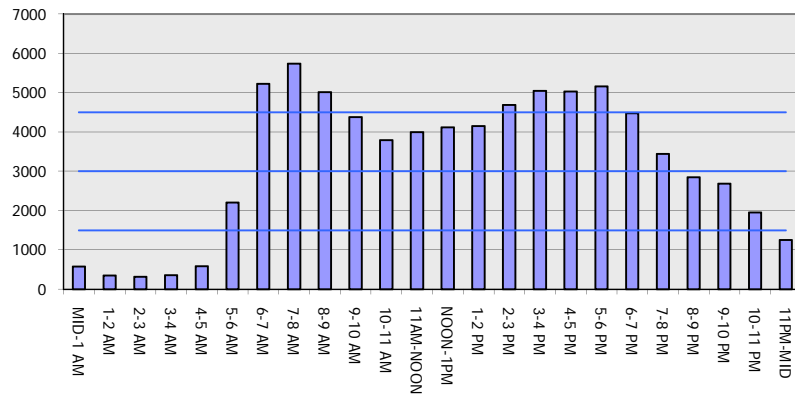
Analyzed for 2009
Construction Season

GRAPHICAL REPRESENTATION OF TRAFFIC MODEL INPUT AND OUTPUT

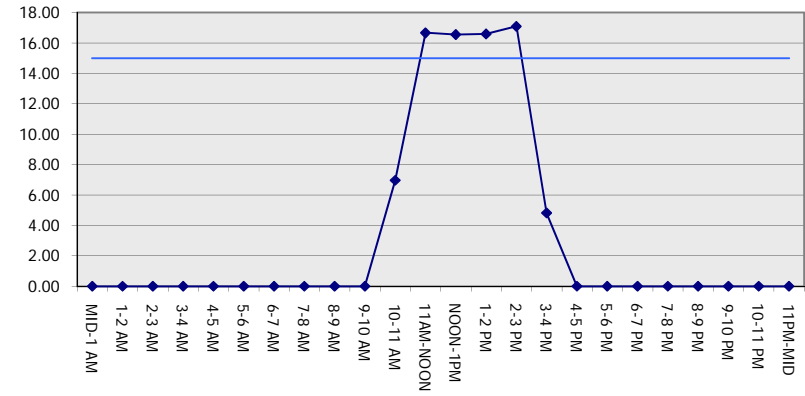
MON-THUR

EASTBOUND DIRECTION

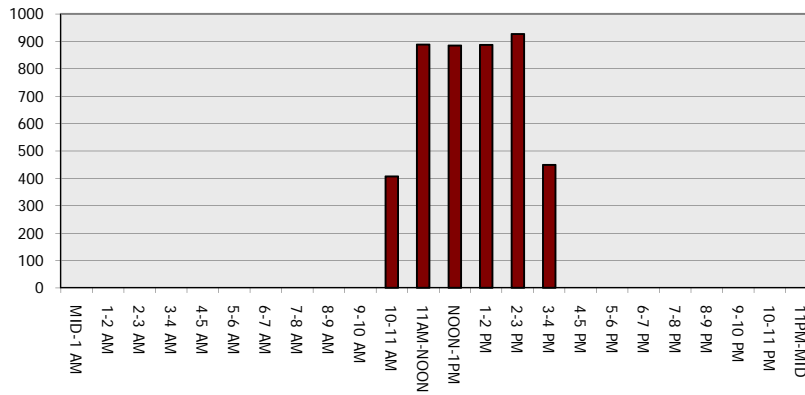
Main Route - Traffic Demand (Vehicles Per Hour)



Main Route Average Delay Per Vehicle (Minutes)



Main Route - Average Queue Length (Vehicles)



Main Route - Average Speed (MPH)

