

<b>IH 94: STH 181 TO USH 41 (MILWAUKEE COUNTY)</b> <b>OFF-PEAK DAY 2 LANE CLOSURE</b> <b>NO DIVERSION ROUTE (MAX QUEUE METHOD)</b>	<b>AUGUST</b>
	Analyzed for 2009 Construction Season

**SUMMARY OF TRAFFIC MODEL OUTPUT**

SUNDAY WESTBOUND DIRECTION

TIME OF DAY	FLOWS AND CAPACITY IN VEH/HR						AVERAGE SPEEDS IN MPH				
	MAIN ROUTE		SITE CAPA CITY	FLOW		AV.DEL PER VEH (MINS)	AVERAGE QUEUE (VEH)	MAIN ROUTE		SITE	
	DEMAND FLOW	PCT HEAVY		MAIN ROUTE	'DIVER TED'			WITHOUT WORK ZONE	WITH WORK ZONE		
MID-1 AM	2150	0.0	OFF	2150	0	0.00	0	68.1	68.1	68.1	
1-2 AM	1412	0.0	OFF	1412	0	0.00	0	69.0	69.0	69.0	
2-3 AM	1138	0.0	OFF	1138	0	0.00	0	69.3	69.3	69.3	
3-4 AM	592	0.0	OFF	592	0	0.00	0	70.0	70.0	70.0	
4-5 AM	383	0.0	OFF	383	0	0.00	0	70.2	70.2	70.2	
5-6 AM	455	0.0	OFF	455	0	0.00	0	70.2	70.2	70.2	
6-7 AM	854	0.0	OFF	854	0	0.00	0	69.7	69.7	69.7	
7-8 AM	1075	0.0	OFF	1075	0	0.00	0	69.4	69.4	69.4	
8-9 AM	1391	0.0	OFF	1391	0	0.00	0	69.0	69.0	69.0	
9-10 AM	2152	0.0	1499	1957	196	8.36+	241	68.1	14.0	30.8	
10-11 AM	3009	0.0	1500	1490	1519	16.59+	407	67.0	8.1	30.8	
11AM-NOON	3471	0.0	1499	1498	1973	16.60+	407	66.4	8.1	30.8	
NOON-1PM	4010	0.0	1500	1500	2510	16.50+	408	63.5	8.1	30.8	
1-2 PM	4105	0.0	1500	1500	2605	16.48+	408	62.8	8.1	30.8	
2-3 PM	4011	0.0	1500	1500	2511	16.50+	408	63.5	8.1	30.8	
3-4 PM	4306	0.0	1500	1500	2806	16.42+	408	61.4	8.1	30.8	
4-5 PM	4146	0.0	1500	1500	2646	16.46+	408	62.5	8.1	30.8	
5-6 PM	3329	0.0	1499	1496	1833	16.60+	407	66.6	8.1	30.8	
6-7 PM	2954	0.0	1499	1491	1463	16.58+	406	67.1	8.1	30.8	
7-8 PM	2385	0.0	OFF	2385	0	0.28	25	67.8	60.0	60.0	
8-9 PM	2083	0.0	OFF	2083	0	0.00	0	68.1	68.1	68.1	
9-10 PM	1955	0.0	OFF	1955	0	0.00	0	68.3	68.3	68.3	
10-11 PM	1505	0.0	OFF	1505	0	0.00	0	68.9	68.9	68.9	
11PM-MID	1258	0.0	OFF	1258	0	0.00	0	69.2	69.2	69.2	

"OFF" INDICATES NO ROAD WORK (ALL LANES OPEN TO TRAFFIC)

+ INDICATES QUEUEING EXCEEDS USER-SPECIFIED MAXIMUM LIMIT

*----- SITE BREAKDOWN DELAYS -----*	
BREAKDOWN DURATION (MINS)	0
RANGE OF QUEUE DELAY - MIN (VEH-H) MAX	0.0
AV BREAKDOWNS PER DAY	0.00
AV QUEUE DELAY/DAY (VEH-H)	0.0
AV TOTAL DELAY/DAY (VEH-H)	0.0

*----- SITE ACCIDENT DELAYS -----*	
BREAKDOWN DURATION (MINS)	0
RANGE OF QUEUE DELAY - MIN (VEH-H) MAX	0
AV BREAKDOWNS PER DAY	0
AV QUEUE DELAY/DAY (VEH-H)	0
AV TOTAL DELAY/DAY (VEH-H)	0

AVERAGE ACCIDENT NUMBERS (PIA/DAY)	
MAIN ROUTE WITHOUT WORKS	0.0207
MAIN ROUTE WITH WORKS	0.0120
'DIVERSION'	0.0177
PIA: Personal Injury Accidents	
IMPACTS ON ROAD USERS	
ROAD USER COSTS PER DAY	\$158,500
CONGESTED HOURS PER DAY*	10

\*Delays Exceeding User-Specified Maximum

**IH 94: STH 181 TO USH 41 (MILWAUKEE COUNTY)**  
**OFF-PEAK DAY 2 LANE CLOSURE**  
**NO DIVERSION ROUTE (MAX QUEUE METHOD)**

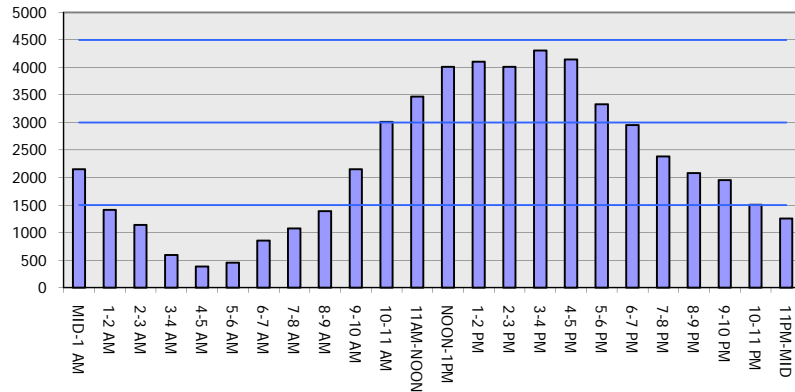
**AUGUST**

Analyzed for 2009  
 Construction Season

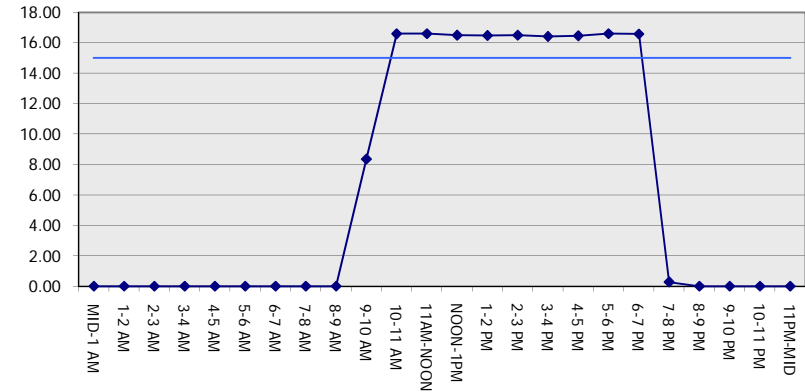
**GRAPHICAL REPRESENTATION OF TRAFFIC MODEL INPUT AND OUTPUT**

**SUNDAY WESTBOUND DIRECTION**

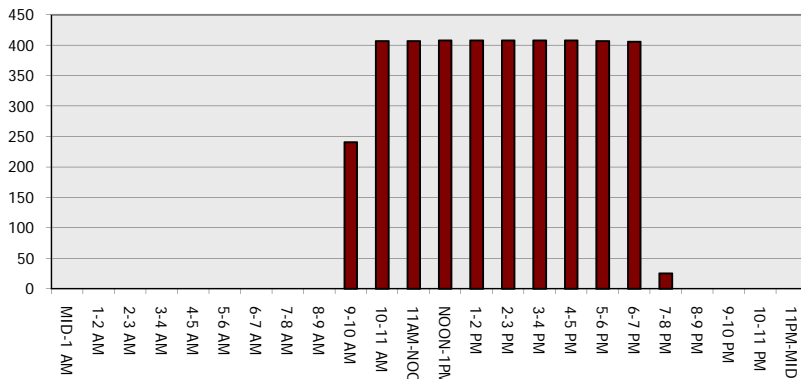
**Main Route - Traffic Demand (Vehicles Per Hour)**



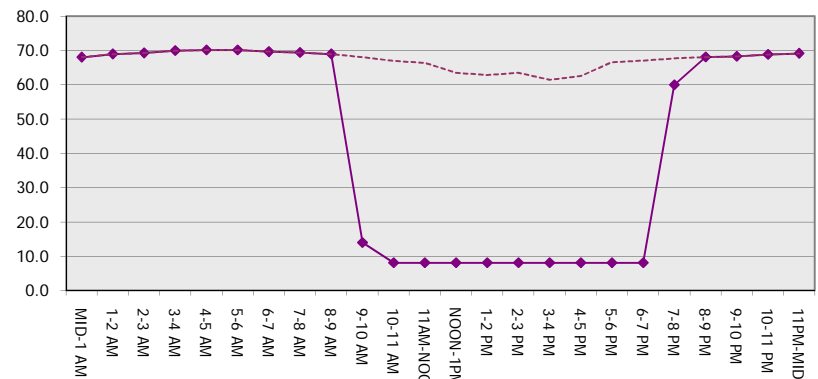
**Main Route Average Delay Per Vehicle (Minutes)**



**Main Route - Average Queue Length (Vehicles)**



**Main Route - Average Speed (MPH)**



<b>IH 94: STH 181 TO USH 41 (MILWAUKEE COUNTY)</b> <b>OFF-PEAK DAY 2 LANE CLOSURE</b> <b>NO DIVERSION ROUTE (MAX QUEUE METHOD)</b>	<b>AUGUST</b>
	Analyzed for 2009 Construction Season

**SUMMARY OF TRAFFIC MODEL OUTPUT**

SUNDAY EASTBOUND DIRECTION

TIME OF DAY	FLOWS AND CAPACITY IN VEH/HR						AVERAGE SPEEDS IN MPH			
	MAIN ROUTE		SITE CAPA CITY	FLOW		AV.DEL PER VEH (MINS)	AVERAGE QUEUE (VEH)	MAIN ROUTE		SITE
	DEMAND FLOW	PCT HEAVY		MAIN ROUTE	'DIVER TED'			WITHOUT WORK ZONE	WITH WORK ZONE	
MID-1 AM	1231	0.0	OFF	1231	0	0.00	0	69.2	69.2	69.2
1-2 AM	715	0.0	OFF	715	0	0.00	0	69.9	69.9	69.9
2-3 AM	677	0.0	OFF	677	0	0.00	0	69.9	69.9	69.9
3-4 AM	367	0.0	OFF	367	0	0.00	0	70.2	70.2	70.2
4-5 AM	301	0.0	OFF	301	0	0.00	0	70.2	70.2	70.2
5-6 AM	437	0.0	OFF	437	0	0.00	0	70.2	70.2	70.2
6-7 AM	749	0.0	OFF	749	0	0.00	0	69.8	69.8	69.8
7-8 AM	1159	0.0	OFF	1159	0	0.00	0	69.3	69.3	69.3
8-9 AM	1542	0.0	OFF	1542	0	0.00	0	68.8	68.8	68.8
9-10 AM	2450	0.0	1499	1881	569	11.34+	297	67.7	10.9	30.8
10-11 AM	3088	0.0	1500	1504	1584	16.59+	407	66.9	8.1	30.8
11AM-NOON	4096	0.0	1500	1500	2596	16.48+	408	62.8	8.1	30.8
NOON-1PM	3953	0.0	1500	1500	2453	16.51+	408	63.8	8.1	30.8
1-2 PM	3854	0.0	1500	1500	2354	16.54+	408	64.5	8.1	30.8
2-3 PM	3829	0.0	1500	1500	2329	16.55+	408	64.7	8.1	30.8
3-4 PM	3843	0.0	1500	1500	2343	16.54+	408	64.6	8.1	30.8
4-5 PM	3805	0.0	1500	1500	2305	16.55+	408	64.8	8.1	30.8
5-6 PM	3506	0.0	1500	1500	2006	16.61+	408	66.4	8.1	30.8
6-7 PM	3601	0.0	1500	1500	2101	16.60+	408	66.3	8.1	30.8
7-8 PM	2859	0.0	OFF	2859	0	0.25	23	67.2	60.1	60.1
8-9 PM	2520	0.0	OFF	2520	0	0.00	0	67.6	67.6	67.6
9-10 PM	2185	0.0	OFF	2185	0	0.00	0	68.0	68.0	68.0
10-11 PM	1586	0.0	OFF	1586	0	0.00	0	68.7	68.7	68.7
11PM-MID	1090	0.0	OFF	1090	0	0.00	0	69.4	69.4	69.4

"OFF" INDICATES NO ROAD WORK (ALL LANES OPEN TO TRAFFIC)

+ INDICATES QUEUEING EXCEEDS USER-SPECIFIED MAXIMUM LIMIT

*----- SITE BREAKDOWN DELAYS -----*	
BREAKDOWN DURATION (MINS)	0
RANGE OF QUEUE DELAY - MIN (VEH-H) MAX	0.0
AV BREAKDOWNS PER DAY	0.00
AV QUEUE DELAY/DAY (VEH-H)	0.0
AV TOTAL DELAY/DAY (VEH-H)	0.0

*----- SITE ACCIDENT DELAYS -----*	
BREAKDOWN DURATION (MINS)	0
RANGE OF QUEUE DELAY - MIN (VEH-H) MAX	0
AV BREAKDOWNS PER DAY	0
AV QUEUE DELAY/DAY (VEH-H)	0
AV TOTAL DELAY/DAY (VEH-H)	0

AVERAGE ACCIDENT NUMBERS (PIA/DAY)	
MAIN ROUTE WITHOUT WORKS	0.0204
MAIN ROUTE WITH WORKS	0.0115
'DIVERSION'	0.0182

PIA: Personal Injury Accidents

ECONOMIC IMPACT ON ROAD USERS	
ROAD USER COSTS PER DAY	\$162,613
CONGESTED HOURS PER DAY*	10

\*Delays Exceeding User-Specified Maximum

**IH 94: STH 181 TO USH 41 (MILWAUKEE COUNTY)  
OFF-PEAK DAY 2 LANE CLOSURE  
NO DIVERSION ROUTE (MAX QUEUE METHOD)**

**AUGUST**  
Analyzed for 2009  
Construction Season

**GRAPHICAL REPRESENTATION OF TRAFFIC MODEL INPUT AND OUTPUT**  
**SUNDAY EASTBOUND DIRECTION**

