

**IH 94: STH 181 TO USH 41 (MILWAUKEE COUNTY)  
OFF-PEAK DAY CLOSURE  
NO DIVERSION ROUTE (MAX QUEUE METHOD)**

**AUGUST**

Analyzed for 2009  
Construction Season

**SUMMARY OF TRAFFIC MODEL OUTPUT**

SATURDAY WESTBOUND DIRECTION

TIME OF DAY	FLOWS AND CAPACITY IN VEH/HR						AVERAGE SPEEDS IN MPH				
	MAIN ROUTE		SITE CAPA CITY	FLOW		AV.DEL PER VEH (MINS)	AVERAGE QUEUE (VEH)	MAIN ROUTE		SITE	
	DEMAND FLOW	PCT HEAVY		MAIN ROUTE	'DIVER TED'			WITHOUT WORK ZONE	WITH WORK ZONE		
MID-1 AM	1417	0.0	OFF	1417	0	0.00	0	69.0	69.0	69.0	
1-2 AM	980	0.0	OFF	980	0	0.00	0	69.5	69.5	69.5	
2-3 AM	1023	0.0	OFF	1023	0	0.00	0	69.5	69.5	69.5	
3-4 AM	658	0.0	OFF	658	0	0.00	0	69.9	69.9	69.9	
4-5 AM	590	0.0	OFF	590	0	0.00	0	70.0	70.0	70.0	
5-6 AM	971	0.0	OFF	971	0	0.00	0	69.6	69.6	69.6	
6-7 AM	1623	0.0	OFF	1623	0	0.00	0	68.7	68.7	68.7	
7-8 AM	2185	0.0	OFF	2185	0	0.00	0	68.0	68.0	68.0	
8-9 AM	2885	0.0	2999	2885	0	0.71	4	67.1	50.4	39.5	
9-10 AM	3378	0.0	3000	3378	0	3.37	174	66.5	26.0	37.3	
10-11 AM	3912	0.0	3000	3469	443	13.83+	746	64.1	11.6	37.3	
11AM-NOON	4064	0.0	3000	3017	1047	16.56+	883	63.1	10.6	37.3	
NOON-1PM	4220	0.0	3000	3011	1210	16.66+	892	62.0	10.6	37.3	
1-2 PM	4028	0.0	3000	2995	1033	16.55+	881	63.3	10.6	37.3	
2-3 PM	4189	0.0	2999	3003	1186	16.64+	889	62.2	10.6	37.3	
3-4 PM	4053	0.0	3000	2995	1057	16.59+	884	63.2	10.6	37.3	
4-5 PM	3349	0.0	3000	2996	353	16.61+	876	66.6	10.7	37.3	
5-6 PM	3103	0.0	2999	2992	111	16.58+	873	66.9	10.7	37.3	
6-7 PM	2761	0.0	OFF	2761	0	1.22	117	67.3	42.8	42.8	
7-8 PM	2291	0.0	OFF	2291	0	0.00	0	67.9	67.9	67.9	
8-9 PM	3312	0.0	OFF	3312	0	0.00	0	66.6	66.6	66.6	
9-10 PM	4007	0.0	OFF	4007	0	0.00	0	63.5	63.5	63.5	
10-11 PM	2501	0.0	OFF	2501	0	0.00	0	67.6	67.6	67.6	
11PM-MID	1846	0.0	OFF	1846	0	0.00	0	68.4	68.4	68.4	

"OFF" INDICATES NO ROAD WORK (ALL LANES OPEN TO TRAFFIC)

+ INDICATES QUEUEING EXCEEDS USER-SPECIFIED MAXIMUM LIMIT

*----- SITE BREAKDOWN DELAYS -----*	
BREAKDOWN DURATION (MINS)	0
RANGE OF QUEUE DELAY - MIN (VEH-H) MAX	0.0
AV BREAKDOWNS PER DAY	0.00
AV QUEUE DELAY/DAY (VEH-H)	0.0
AV TOTAL DELAY/DAY (VEH-H)	0.0

*----- SITE ACCIDENT DELAYS -----*	
BREAKDOWN DURATION (MINS)	0
RANGE OF QUEUE DELAY - MIN (VEH-H) MAX	0
AV BREAKDOWNS PER DAY	0
AV QUEUE DELAY/DAY (VEH-H)	0
AV TOTAL DELAY/DAY (VEH-H)	0

AVERAGE ACCIDENT NUMBERS (PIA/DAY)	
MAIN ROUTE WITHOUT WORKS	0.0242
MAIN ROUTE WITH WORKS	0.0197
'DIVERSION'	0.0057
PIA: Personal Injury Accidents	
IMPACTS ON ROAD USERS	
ROAD USER COSTS PER DAY	\$140,335
CONGESTED HOURS PER DAY*	8

\*Delays Exceeding User-Specified Maximum

**IH 94: STH 181 TO USH 41 (MILWAUKEE COUNTY)**  
**OFF-PEAK DAY CLOSURE**  
**NO DIVERSION ROUTE (MAX QUEUE METHOD)**

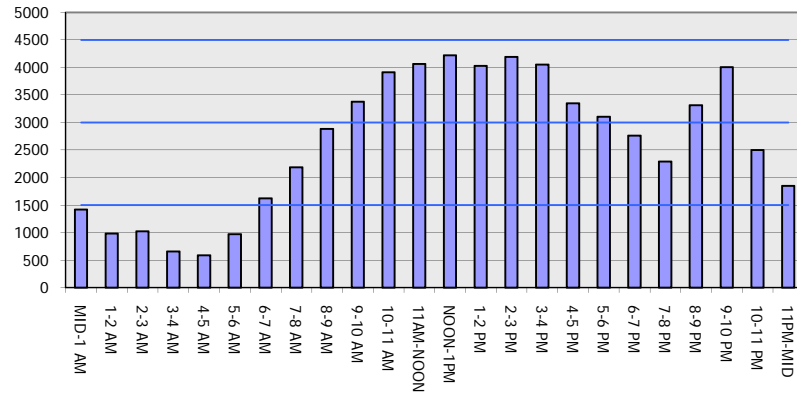
**AUGUST**

Analyzed for 2009  
 Construction Season

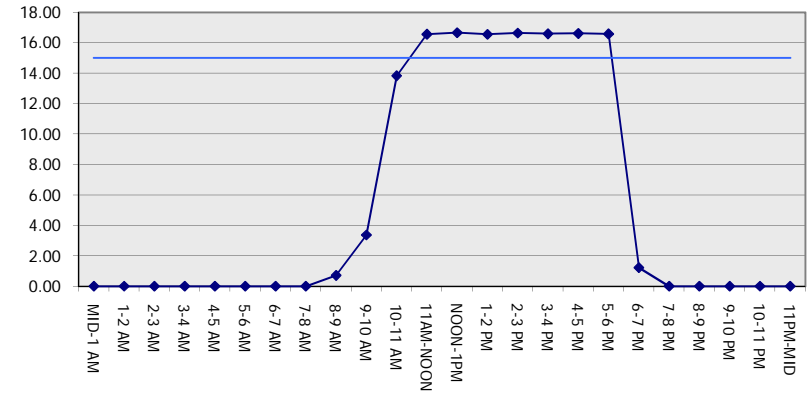
**GRAPHICAL REPRESENTATION OF TRAFFIC MODEL INPUT AND OUTPUT**

**SATURDAY WESTBOUND DIRECTION**

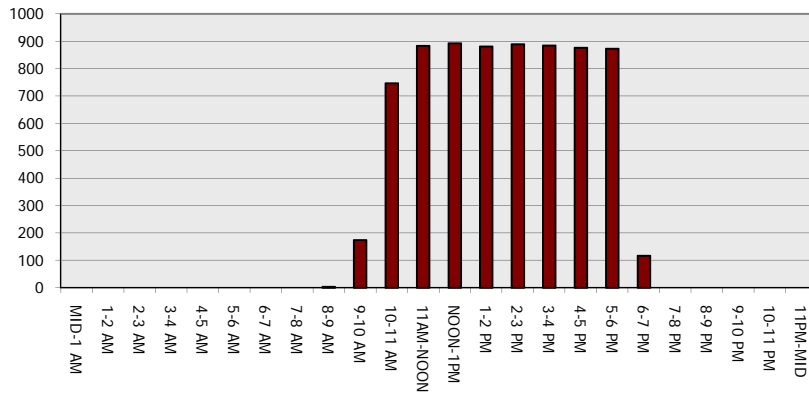
**Main Route - Traffic Demand (Vehicles Per Hour)**



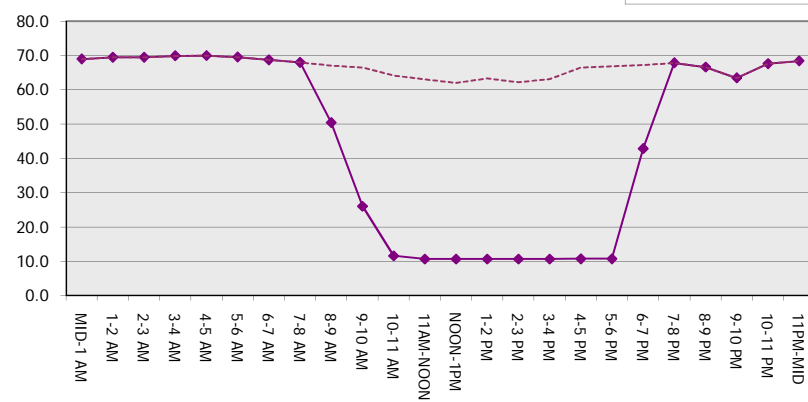
**Main Route Average Delay Per Vehicle (Minutes)**



**Main Route - Average Queue Length (Vehicles)**



**Main Route - Average Speed (MPH)**



<b>IH 94: STH 181 TO USH 41 (MILWAUKEE COUNTY)</b> <b>OFF-PEAK DAY CLOSURE</b> <b>NO DIVERSION ROUTE (MAX QUEUE METHOD)</b>	<b>AUGUST</b>
	Analyzed for 2009 Construction Season

**SUMMARY OF TRAFFIC MODEL OUTPUT**

SATURDAY EASTBOUND DIRECTION

TIME OF DAY	FLOWS AND CAPACITY IN VEH/HR							AVERAGE SPEEDS IN MPH		
	MAIN ROUTE		SITE CAPA CITY	FLOW		AV.DEL PER VEH (MINS)	AVERAGE QUEUE (VEH)	MAIN ROUTE		SITE
	DEMAND FLOW	PCT HEAVY		MAIN ROUTE	'DIVER TED'			WITHOUT WORK ZONE	WITH WORK ZONE	
MID-1 AM	1937	0.0	OFF	1937	0	0.00	0	68.3	68.3	68.3
1-2 AM	717	0.0	OFF	717	0	0.00	0	69.9	69.9	69.9
2-3 AM	542	0.0	OFF	542	0	0.00	0	70.0	70.0	70.0
3-4 AM	419	0.0	OFF	419	0	0.00	0	70.2	70.2	70.2
4-5 AM	509	0.0	OFF	509	0	0.00	0	70.1	70.1	70.1
5-6 AM	870	0.0	OFF	870	0	0.00	0	69.7	69.7	69.7
6-7 AM	1359	0.0	OFF	1359	0	0.00	0	69.1	69.1	69.1
7-8 AM	1712	0.0	OFF	1712	0	0.00	0	68.6	68.6	68.6
8-9 AM	2166	0.0	3000	2166	0	0.33	0	68.1	58.8	49.7
9-10 AM	2534	0.0	2999	2534	0	0.42	0	67.6	56.4	46.2
10-11 AM	3147	0.0	2999	3147	0	1.46	47	66.8	39.8	37.3
11AM-NOON	3371	0.0	3000	3371	0	6.01	310	66.6	18.0	37.3
NOON-1PM	3841	0.0	3000	3391	450	15.01+	800	64.6	11.1	37.3
1-2 PM	3660	0.0	2999	2987	673	16.62+	878	65.8	10.7	37.3
2-3 PM	4308	0.0	2999	3025	1283	16.77+	899	61.4	10.6	37.3
3-4 PM	5312	0.0	2999	3000	2312	16.92+	932	54.6	10.4	37.3
4-5 PM	5355	0.0	3000	3000	2355	16.89+	932	54.3	10.4	37.3
5-6 PM	4828	0.0	3000	3010	1818	17.12+	931	57.9	10.4	37.3
6-7 PM	3685	0.0	OFF	3685	0	2.11	187	65.7	33.5	33.5
7-8 PM	3280	0.0	OFF	3280	0	0.00	0	66.6	66.6	66.6
8-9 PM	3118	0.0	OFF	3118	0	0.00	0	66.9	66.9	66.9
9-10 PM	3191	0.0	OFF	3191	0	0.00	0	66.8	66.8	66.8
10-11 PM	3044	0.0	OFF	3044	0	0.00	0	66.9	66.9	66.9
11PM-MID	2033	0.0	OFF	2033	0	0.00	0	68.2	68.2	68.2

"OFF" INDICATES NO ROAD WORK (ALL LANES OPEN TO TRAFFIC)

+ INDICATES QUEUEING EXCEEDS USER-SPECIFIED MAXIMUM LIMIT

*----- SITE BREAKDOWN DELAYS -----*	
BREAKDOWN DURATION (MINS)	0
RANGE OF QUEUE DELAY - MIN (VEH-H) MAX	0.0
AV BREAKDOWNS PER DAY	0.00
AV QUEUE DELAY/DAY (VEH-H)	0.0
AV TOTAL DELAY/DAY (VEH-H)	0.0

*----- SITE ACCIDENT DELAYS -----*	
BREAKDOWN DURATION (MINS)	0
RANGE OF QUEUE DELAY - MIN (VEH-H) MAX	0
AV BREAKDOWNS PER DAY	0
AV QUEUE DELAY/DAY (VEH-H)	0
AV TOTAL DELAY/DAY (VEH-H)	0

AVERAGE ACCIDENT NUMBERS (PIA/DAY)	
MAIN ROUTE WITHOUT WORKS	0.0248
MAIN ROUTE WITH WORKS	0.0194
'DIVERSION'	0.0079

PIA: Personal Injury Accidents

ECONOMIC IMPACT ON ROAD USERS	
ROAD USER COSTS PER DAY	\$131,936
CONGESTED HOURS PER DAY*	6

\*Delays Exceeding User-Specified Maximum

**IH 94: STH 181 TO USH 41 (MILWAUKEE COUNTY)  
OFF-PEAK DAY CLOSURE  
NO DIVERSION ROUTE (MAX QUEUE METHOD)**

**AUGUST**

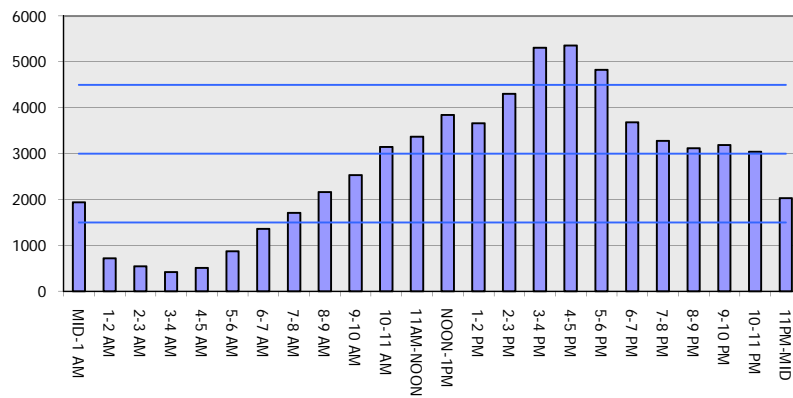
Analyzed for 2009  
Construction Season

**GRAPHICAL REPRESENTATION OF TRAFFIC MODEL INPUT AND OUTPUT**

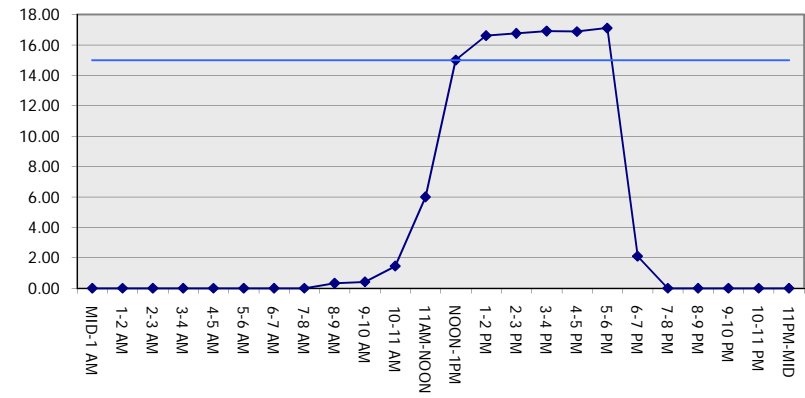
**SATURDAY**

**EASTBOUND DIRECTION**

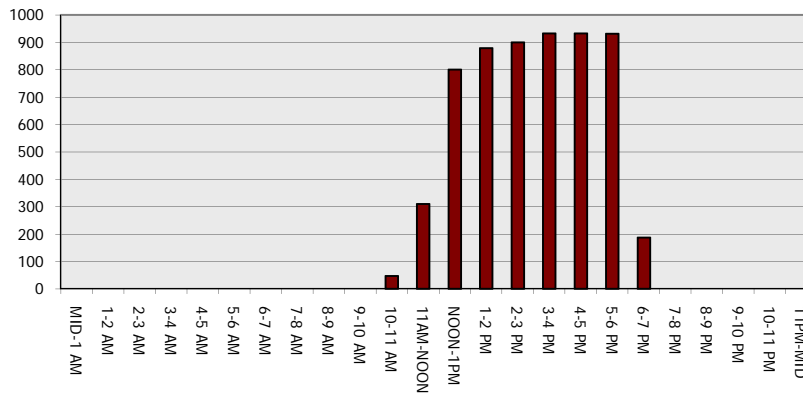
**Main Route - Traffic Demand (Vehicles Per Hour)**



**Main Route Average Delay Per Vehicle (Minutes)**



**Main Route - Average Queue Length (Vehicles)**



**Main Route - Average Speed (MPH)**

