

**IH 94: STH 181 TO USH 41 (MILWAUKEE COUNTY)
OFF-PEAK DAY CLOSURE
NO DIVERSION ROUTE (MAX QUEUE METHOD)**

AUGUST
Analyzed for 2009
Construction Season

SUMMARY OF TRAFFIC MODEL OUTPUT
MON-THUR WESTBOUND DIRECTION

TIME OF DAY	FLOWS AND CAPACITY IN VEH/HR						AVERAGE SPEEDS IN MPH				
	MAIN ROUTE		SITE CAPA CITY	FLOW		AV.DEL PER VEH (MINS)	AVERAGE QUEUE (VEH)	MAIN ROUTE		SITE	
	DEMAND FLOW	PCT HEAVY		MAIN ROUTE	'DIVER TED'			WITHOUT WORK ZONE	WITH WORK ZONE		
MID-1 AM	872	0.0	OFF	872	0	0.00	0	69.7	69.7	69.7	
1-2 AM	509	0.0	OFF	509	0	0.00	0	70.1	70.1	70.1	
2-3 AM	396	0.0	OFF	396	0	0.00	0	70.2	70.2	70.2	
3-4 AM	412	0.0	OFF	412	0	0.00	0	70.2	70.2	70.2	
4-5 AM	752	0.0	OFF	752	0	0.00	0	69.8	69.8	69.8	
5-6 AM	2167	0.0	OFF	2167	0	0.00	0	68.1	68.1	68.1	
6-7 AM	4580	0.0	OFF	4580	0	0.00	0	59.6	59.6	59.6	
7-8 AM	5686	0.0	OFF	5686	0	0.00	0	52.0	52.0	52.0	
8-9 AM	5188	0.0	OFF	5188	0	0.00	0	55.4	55.4	55.4	
9-10 AM	4054	0.0	OFF	4054	0	0.00	0	63.2	63.2	63.2	
10-11 AM	3955	0.0	2999	3955	0	7.82+	469	63.8	16.0	37.3	
11AM-NOON	4298	0.0	2999	2951	1346	16.86+	905	61.5	10.6	37.3	
NOON-1PM	4472	0.0	3000	3013	1459	16.99+	915	60.3	10.5	37.3	
1-2 PM	4478	0.0	3000	3011	1467	17.00+	916	60.2	10.5	37.3	
2-3 PM	5466	0.0	3000	3000	2466	16.84+	932	53.5	10.4	37.3	
3-4 PM	5767	0.0	OFF	5767	0	8.22	813	51.5	13.0	13.0	
4-5 PM	5221	0.0	OFF	5221	0	3.36	311	55.2	24.1	24.1	
5-6 PM	4918	0.0	OFF	4918	0	0.00	0	57.3	57.3	57.3	
6-7 PM	4434	0.0	OFF	4434	0	0.00	0	60.5	60.5	60.5	
7-8 PM	3088	0.0	OFF	3088	0	0.00	0	66.9	66.9	66.9	
8-9 PM	2669	0.0	OFF	2669	0	0.00	0	67.4	67.4	67.4	
9-10 PM	2543	0.0	OFF	2543	0	0.00	0	67.6	67.6	67.6	
10-11 PM	2098	0.0	OFF	2098	0	0.00	0	68.1	68.1	68.1	
11PM-MID	1414	0.0	OFF	1414	0	0.00	0	69.0	69.0	69.0	

"OFF" INDICATES NO ROAD WORK (ALL LANES OPEN TO TRAFFIC)

+ INDICATES QUEUEING EXCEEDS USER-SPECIFIED MAXIMUM LIMIT

----- SITE BREAKDOWN DELAYS -----

BREAKDOWN DURATION (MINS)	0
RANGE OF QUEUE DELAY - MIN (VEH-H) MAX	0.0
AV BREAKDOWNS PER DAY	0.00
AV QUEUE DELAY/DAY (VEH-H)	0.0
AV TOTAL DELAY/DAY (VEH-H)	0.0

----- SITE ACCIDENT DELAYS -----

BREAKDOWN DURATION (MINS)	0
RANGE OF QUEUE DELAY - MIN (VEH-H) MAX	0
AV BREAKDOWNS PER DAY	0
AV QUEUE DELAY/DAY (VEH-H)	0
AV TOTAL DELAY/DAY (VEH-H)	0

AVERAGE ACCIDENT NUMBERS (PIA/DAY)

MAIN ROUTE WITHOUT WORKS	0.0303
MAIN ROUTE WITH WORKS	0.0267
'DIVERSION'	0.0060

PIA: Personal Injury Accidents

IMPACTS ON ROAD USERS

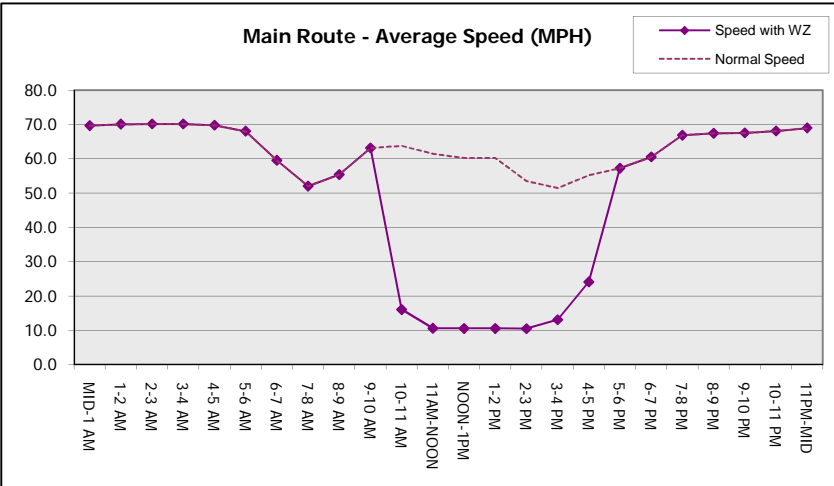
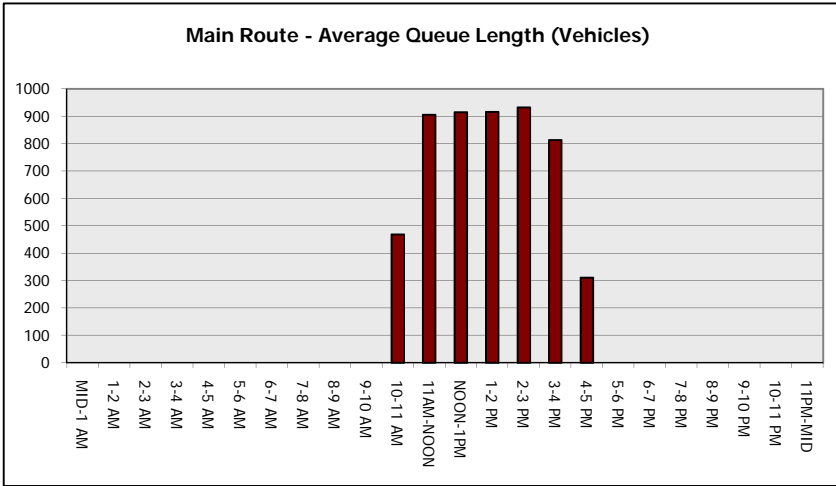
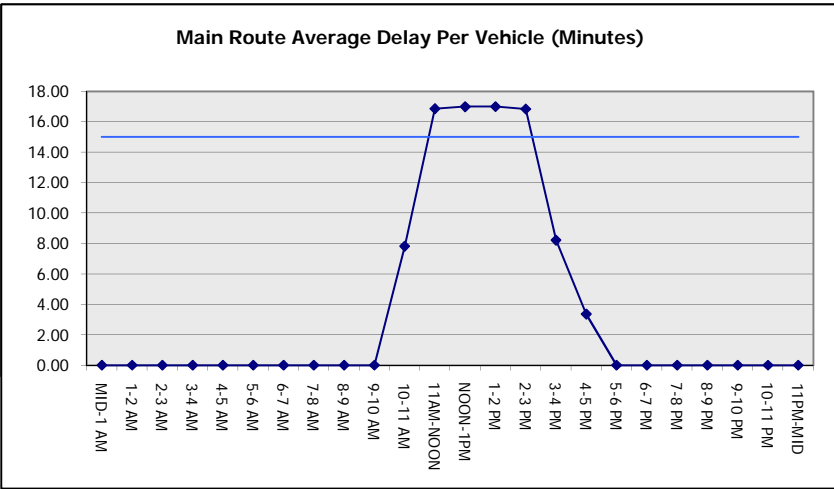
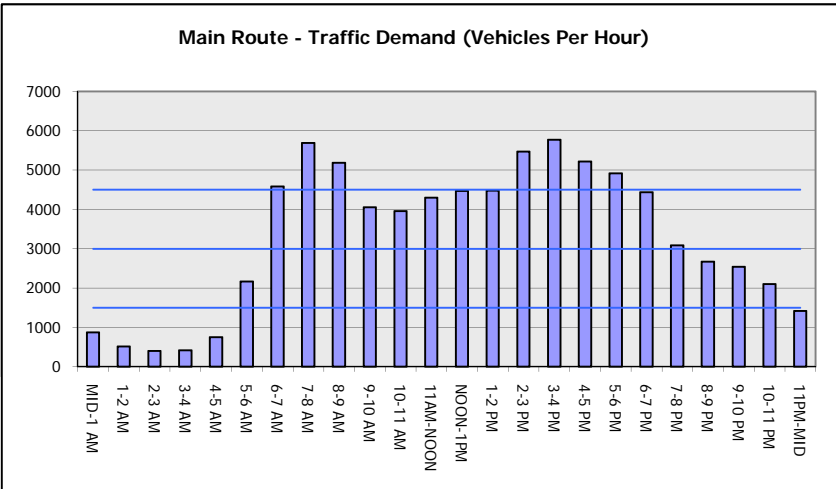
ROAD USER COSTS PER DAY	\$80,921
CONGESTED HOURS PER DAY*	5

*Delays Exceeding User-Specified Maximum

IH 94: STH 181 TO USH 41 (MILWAUKEE COUNTY)
OFF-PEAK DAY CLOSURE
NO DIVERSION ROUTE (MAX QUEUE METHOD)

AUGUST
 Analyzed for 2009
 Construction Season

GRAPHICAL REPRESENTATION OF TRAFFIC MODEL INPUT AND OUTPUT
MON-THUR WESTBOUND DIRECTION



IH 94: STH 181 TO USH 41 (MILWAUKEE COUNTY) OFF-PEAK DAY CLOSURE NO DIVERSION ROUTE (MAX QUEUE METHOD)	AUGUST
	Analyzed for 2009 Construction Season

SUMMARY OF TRAFFIC MODEL OUTPUT

MON-THUR EASTBOUND DIRECTION

TIME OF DAY	FLOWS AND CAPACITY IN VEH/HR						AVERAGE SPEEDS IN MPH			
	MAIN ROUTE		SITE CAPA CITY	FLOW		AV.DEL PER VEH (MINS)	AVERAGE QUEUE (VEH)	MAIN ROUTE		SITE
	DEMAND FLOW	PCT HEAVY		MAIN ROUTE	'DIVER TED'			WITHOUT WORK ZONE	WITH WORK ZONE	
MID-1 AM	755	0.0	OFF	755	0	0.00	0	69.8	69.8	69.8
1-2 AM	452	0.0	OFF	452	0	0.00	0	70.2	70.2	70.2
2-3 AM	395	0.0	OFF	395	0	0.00	0	70.2	70.2	70.2
3-4 AM	367	0.0	OFF	367	0	0.00	0	70.2	70.2	70.2
4-5 AM	611	0.0	OFF	611	0	0.00	0	70.0	70.0	70.0
5-6 AM	2488	0.0	OFF	2488	0	0.00	0	67.6	67.6	67.6
6-7 AM	5542	0.0	OFF	5542	0	0.00	0	53.0	53.0	53.0
7-8 AM	5934	0.0	OFF	5934	0	0.00	0	50.3	50.3	50.3
8-9 AM	5403	0.0	OFF	5403	0	0.00	0	54.0	54.0	54.0
9-10 AM	4297	0.0	OFF	4297	0	0.00	0	61.5	61.5	61.5
10-11 AM	4133	0.0	2999	3973	160	9.16+	542	62.6	14.5	37.3
11AM-NOON	4268	0.0	2999	2926	1342	16.87+	904	61.7	10.6	37.3
NOON-1PM	4283	0.0	3000	3000	1284	16.76+	898	61.6	10.6	37.3
1-2 PM	4267	0.0	3000	3005	1262	16.73+	896	61.7	10.6	37.3
2-3 PM	4864	0.0	2999	3008	1856	17.11+	931	57.6	10.4	37.3
3-4 PM	5128	0.0	OFF	5128	0	5.07	476	55.8	18.8	18.8
4-5 PM	5149	0.0	OFF	5149	0	0.02	0	55.7	55.2	55.2
5-6 PM	5210	0.0	OFF	5210	0	0.00	0	55.3	55.3	55.3
6-7 PM	4434	0.0	OFF	4434	0	0.00	0	60.5	60.5	60.5
7-8 PM	3522	0.0	OFF	3522	0	0.00	0	66.4	66.4	66.4
8-9 PM	3138	0.0	OFF	3138	0	0.00	0	66.8	66.8	66.8
9-10 PM	3125	0.0	OFF	3125	0	0.00	0	66.8	66.8	66.8
10-11 PM	2426	0.0	OFF	2426	0	0.00	0	67.7	67.7	67.7
11PM-MID	1814	0.0	OFF	1814	0	0.00	0	68.5	68.5	68.5

"OFF" INDICATES NO ROAD WORK (ALL LANES OPEN TO TRAFFIC)

+ INDICATES QUEUEING EXCEEDS USER-SPECIFIED MAXIMUM LIMIT

----- SITE BREAKDOWN DELAYS -----	
BREAKDOWN DURATION (MINS)	0
RANGE OF QUEUE DELAY - MIN (VEH-H) MAX	0.0
AV BREAKDOWNS PER DAY	0.00
AV QUEUE DELAY/DAY (VEH-H)	0.0
AV TOTAL DELAY/DAY (VEH-H)	0.0

----- SITE ACCIDENT DELAYS -----	
BREAKDOWN DURATION (MINS)	0
RANGE OF QUEUE DELAY - MIN (VEH-H) MAX	0
AV BREAKDOWNS PER DAY	0
AV QUEUE DELAY/DAY (VEH-H)	0
AV TOTAL DELAY/DAY (VEH-H)	0

AVERAGE ACCIDENT NUMBERS (PIA/DAY)	
MAIN ROUTE WITHOUT WORKS	0.0313
MAIN ROUTE WITH WORKS	0.0280
'DIVERSION'	0.0052

PIA: Personal Injury Accidents

ECONOMIC IMPACT ON ROAD USERS	
ROAD USER COSTS PER DAY	\$71,085
CONGESTED HOURS PER DAY*	5

*Delays Exceeding User-Specified Maximum

**IH 94: STH 181 TO USH 41 (MILWAUKEE COUNTY)
OFF-PEAK DAY CLOSURE
NO DIVERSION ROUTE (MAX QUEUE METHOD)**

AUGUST

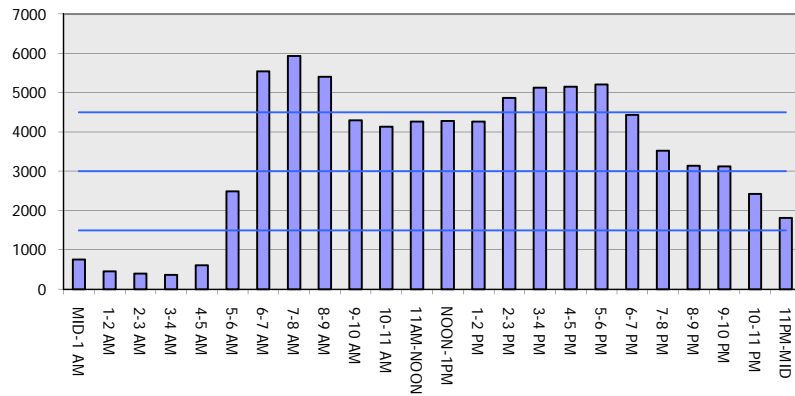
Analyzed for 2009
Construction Season

GRAPHICAL REPRESENTATION OF TRAFFIC MODEL INPUT AND OUTPUT

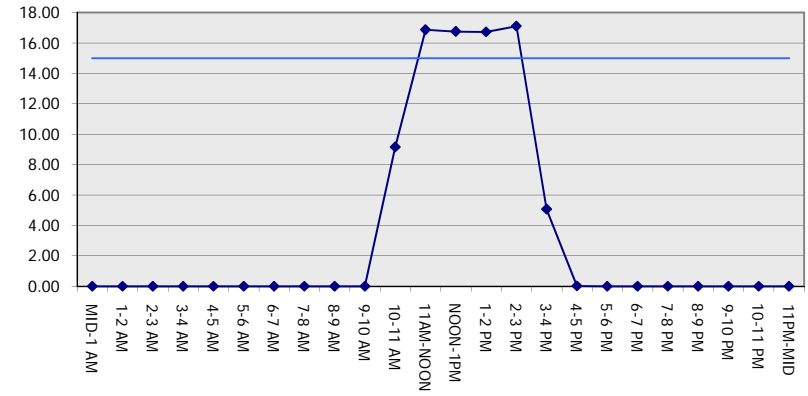
MON-THUR

EASTBOUND DIRECTION

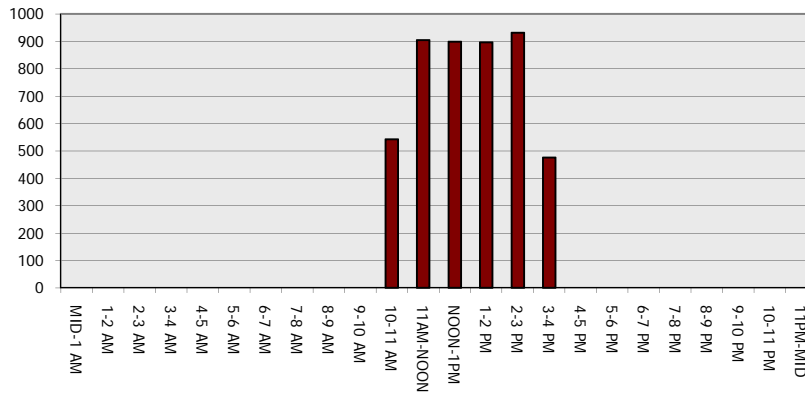
Main Route - Traffic Demand (Vehicles Per Hour)



Main Route Average Delay Per Vehicle (Minutes)



Main Route - Average Queue Length (Vehicles)



Main Route - Average Speed (MPH)

