

IH 94: STH 181 TO USH 41 (MILWAUKEE COUNTY) OFF-PEAK DAY 2 LANE CLOSURE NO DIVERSION ROUTE (MAX QUEUE METHOD)	MAY
	Analyzed for 2009 Construction Season

SUMMARY OF TRAFFIC MODEL OUTPUT

SUNDAY WESTBOUND DIRECTION

TIME OF DAY	FLOWS AND CAPACITY IN VEH/HR						AVERAGE SPEEDS IN MPH			
	MAIN ROUTE		SITE CAPA CITY	FLOW		AV.DEL PER VEH (MINS)	AVERAGE QUEUE (VEH)	MAIN ROUTE		SITE
	DEMAND FLOW	PCT HEAVY		MAIN ROUTE	'DIVER TED'			WITHOUT WORK ZONE	WITH WORK ZONE	
MID-1 AM	1409	0.0	OFF	1409	0	0.00	0	69.0	69.0	69.0
1-2 AM	1072	0.0	OFF	1072	0	0.00	0	69.4	69.4	69.4
2-3 AM	1135	0.0	OFF	1135	0	0.00	0	69.3	69.3	69.3
3-4 AM	528	0.0	OFF	528	0	0.00	0	70.0	70.0	70.0
4-5 AM	409	0.0	OFF	409	0	0.00	0	70.2	70.2	70.2
5-6 AM	522	0.0	OFF	522	0	0.00	0	70.1	70.1	70.1
6-7 AM	888	0.0	OFF	888	0	0.00	0	69.6	69.6	69.6
7-8 AM	1130	0.0	OFF	1130	0	0.00	0	69.3	69.3	69.3
8-9 AM	1548	0.0	OFF	1548	0	0.00	0	68.8	68.8	68.8
9-10 AM	2313	0.0	1499	1826	487	10.40+	283	67.9	11.8	31.3
10-11 AM	2918	0.0	1500	1512	1406	16.55+	406	67.1	8.1	31.2
11AM-NOON	3557	0.0	1500	1504	2053	16.58+	407	66.3	8.1	30.9
NOON-1PM	3956	0.0	1499	1500	2456	16.51+	408	63.8	8.1	30.9
1-2 PM	3799	0.0	1500	1500	2298	16.55+	408	64.9	8.1	30.9
2-3 PM	3951	0.0	1500	1500	2451	16.51+	408	63.8	8.1	30.9
3-4 PM	4056	0.0	1500	1500	2556	16.48+	408	63.2	8.1	30.9
4-5 PM	4369	0.0	1500	1500	2869	16.40+	408	61.0	8.1	30.9
5-6 PM	3419	0.0	1500	1506	1912	16.58+	407	66.5	8.1	30.8
6-7 PM	2716	0.0	1500	1510	1206	16.57+	406	67.4	8.1	30.8
7-8 PM	2378	0.0	OFF	2378	0	0.19	17	67.8	62.2	62.2
8-9 PM	2010	0.0	OFF	2010	0	0.00	0	68.2	68.2	68.2
9-10 PM	1810	0.0	OFF	1810	0	0.00	0	68.5	68.5	68.5
10-11 PM	1398	0.0	OFF	1398	0	0.00	0	69.0	69.0	69.0
11PM-MID	906	0.0	OFF	906	0	0.00	0	69.6	69.6	69.6

"OFF" INDICATES NO ROAD WORK (ALL LANES OPEN TO TRAFFIC)

+ INDICATES QUEUEING EXCEEDS USER-SPECIFIED MAXIMUM LIMIT

----- SITE BREAKDOWN DELAYS -----	
BREAKDOWN DURATION (MINS)	0
RANGE OF QUEUE DELAY - MIN (VEH-H) MAX	0.0
AV BREAKDOWNS PER DAY	0.00
AV QUEUE DELAY/DAY (VEH-H)	0.0
AV TOTAL DELAY/DAY (VEH-H)	0.0

----- SITE ACCIDENT DELAYS -----	
BREAKDOWN DURATION (MINS)	0
RANGE OF QUEUE DELAY - MIN (VEH-H) MAX	0
AV BREAKDOWNS PER DAY	0
AV QUEUE DELAY/DAY (VEH-H)	0
AV TOTAL DELAY/DAY (VEH-H)	0

AVERAGE ACCIDENT NUMBERS (PIA/DAY)	
MAIN ROUTE WITHOUT WORKS	0.0199
MAIN ROUTE WITH WORKS	0.0114
'DIVERSION'	0.0174
PIA: Personal Injury Accidents	
IMPACTS ON ROAD USERS	
ROAD USER COSTS PER DAY	\$157,180
CONGESTED HOURS PER DAY*	10

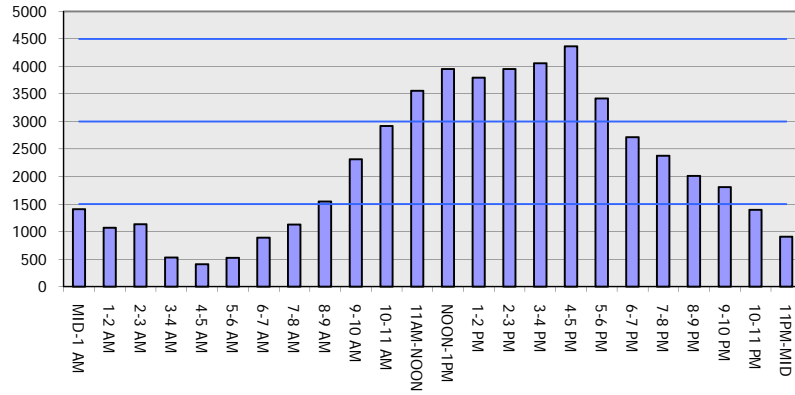
*Delays Exceeding User-Specified Maximum

IH 94: STH 181 TO USH 41 (MILWAUKEE COUNTY)
OFF-PEAK DAY 2 LANE CLOSURE
NO DIVERSION ROUTE (MAX QUEUE METHOD)

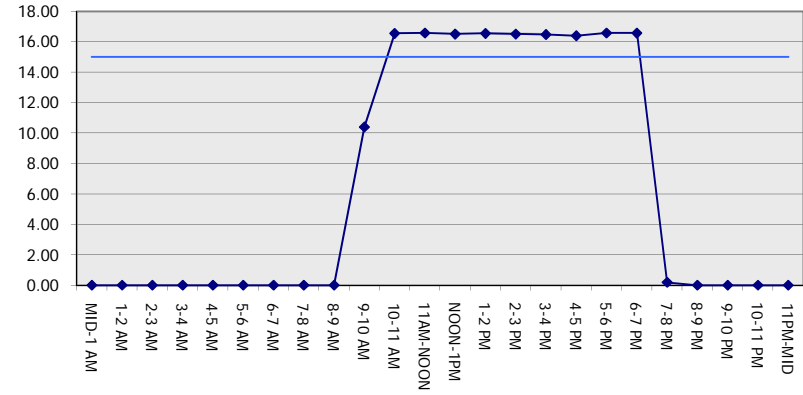
MAY
 Analyzed for 2009
 Construction Season

GRAPHICAL REPRESENTATION OF TRAFFIC MODEL INPUT AND OUTPUT
SUNDAY WESTBOUND DIRECTION

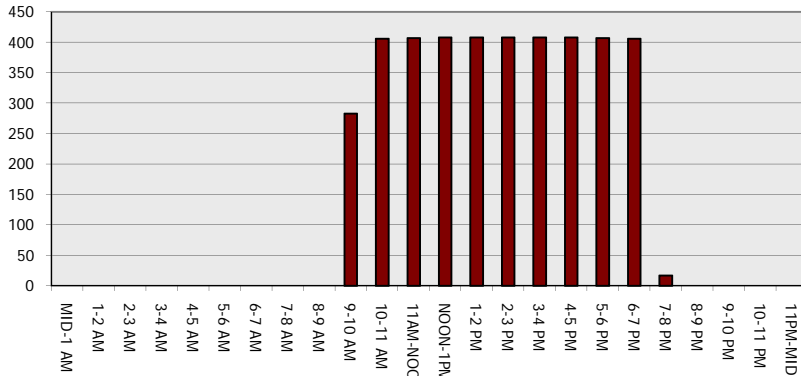
Main Route - Traffic Demand (Vehicles Per Hour)



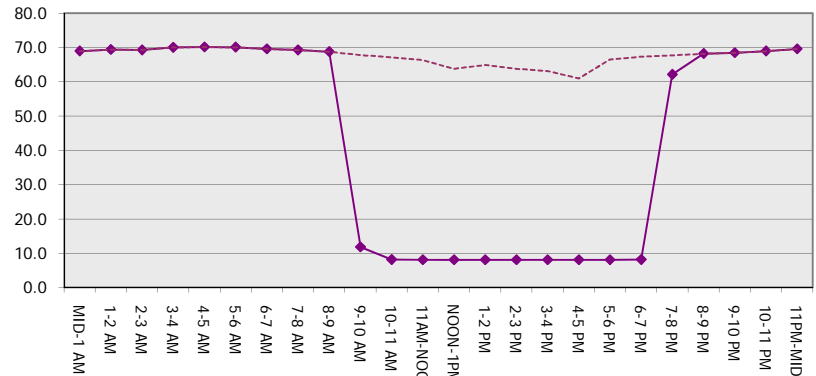
Main Route Average Delay Per Vehicle (Minutes)



Main Route - Average Queue Length (Vehicles)



Main Route - Average Speed (MPH)



IH 94: STH 181 TO USH 41 (MILWAUKEE COUNTY) OFF-PEAK DAY 2 LANE CLOSURE NO DIVERSION ROUTE (MAX QUEUE METHOD)	MAY
	Analyzed for 2009 Construction Season

SUMMARY OF TRAFFIC MODEL OUTPUT

SUNDAY EASTBOUND DIRECTION

TIME OF DAY	FLOWS AND CAPACITY IN VEH/HR						AVERAGE SPEEDS IN MPH			
	MAIN ROUTE		SITE CAPA CITY	FLOW		AV.DEL PER VEH (MINS)	AVERAGE QUEUE (VEH)	MAIN ROUTE		SITE
	DEMAND FLOW	PCT HEAVY		MAIN ROUTE	'DIVER TED'			WITHOUT WORK ZONE	WITH WORK ZONE	
MID-1 AM	1153	0.0	OFF	1153	0	0.00	0	69.3	69.3	69.3
1-2 AM	692	0.0	OFF	692	0	0.00	0	69.9	69.9	69.9
2-3 AM	547	0.0	OFF	547	0	0.00	0	70.0	70.0	70.0
3-4 AM	345	0.0	OFF	345	0	0.00	0	70.2	70.2	70.2
4-5 AM	264	0.0	OFF	264	0	0.00	0	70.2	70.2	70.2
5-6 AM	413	0.0	OFF	413	0	0.00	0	70.2	70.2	70.2
6-7 AM	789	0.0	OFF	789	0	0.00	0	69.7	69.7	69.7
7-8 AM	1160	0.0	OFF	1160	0	0.00	0	69.3	69.3	69.3
8-9 AM	1823	0.0	OFF	1823	0	0.00	0	68.5	68.5	68.5
9-10 AM	2431	0.0	1499	1888	544	11.46+	299	67.7	10.9	30.8
10-11 AM	3094	0.0	1500	1503	1591	16.60+	407	66.9	8.1	30.8
11AM-NOON	3980	0.0	1500	1500	2480	16.51+	408	63.7	8.1	30.8
NOON-1PM	3644	0.0	1500	1500	2144	16.59+	408	66.0	8.1	30.8
1-2 PM	3830	0.0	1500	1500	2330	16.55+	408	64.7	8.1	30.8
2-3 PM	3753	0.0	1500	1500	2253	16.56+	408	65.2	8.1	30.8
3-4 PM	3733	0.0	1500	1500	2233	16.57+	408	65.3	8.1	30.8
4-5 PM	3700	0.0	1500	1500	2200	16.58+	408	65.6	8.1	30.8
5-6 PM	3549	0.0	1500	1500	2049	16.60+	408	66.3	8.1	30.8
6-7 PM	3496	0.0	1500	1500	1996	16.61+	408	66.4	8.1	30.8
7-8 PM	3102	0.0	OFF	3102	0	0.28	26	66.9	59.2	59.2
8-9 PM	2649	0.0	OFF	2649	0	0.00	0	67.4	67.4	67.4
9-10 PM	2377	0.0	OFF	2377	0	0.00	0	67.8	67.8	67.8
10-11 PM	1819	0.0	OFF	1819	0	0.00	0	68.5	68.5	68.5
11PM-MID	1036	0.0	OFF	1036	0	0.00	0	69.4	69.4	69.4

"OFF" INDICATES NO ROAD WORK (ALL LANES OPEN TO TRAFFIC)

+ INDICATES QUEUEING EXCEEDS USER-SPECIFIED MAXIMUM LIMIT

BREAKDOWN DURATION (MINS)	0
RANGE OF QUEUE DELAY - MIN (VEH-H) MAX	0.0
AV BREAKDOWNS PER DAY	0.00
AV QUEUE DELAY/DAY (VEH-H)	0.0
AV TOTAL DELAY/DAY (VEH-H)	0.0

BREAKDOWN DURATION (MINS)	0
RANGE OF QUEUE DELAY - MIN (VEH-H) MAX	0
AV BREAKDOWNS PER DAY	0
AV QUEUE DELAY/DAY (VEH-H)	0
AV TOTAL DELAY/DAY (VEH-H)	0

MAIN ROUTE WITHOUT WORKS	0.0204
MAIN ROUTE WITH WORKS	0.0118
'DIVERSION'	0.0175

PIA: Personal Injury Accidents

ROAD USER COSTS PER DAY	\$159,013
CONGESTED HOURS PER DAY*	10

*Delays Exceeding User-Specified Maximum

**IH 94: STH 181 TO USH 41 (MILWAUKEE COUNTY)
OFF-PEAK DAY 2 LANE CLOSURE
NO DIVERSION ROUTE (MAX QUEUE METHOD)**

MAY
Analyzed for 2009
Construction Season

GRAPHICAL REPRESENTATION OF TRAFFIC MODEL INPUT AND OUTPUT
SUNDAY EASTBOUND DIRECTION

