

<b>IH 94: STH 50 TO STATE LINE (KENOSHA COUNTY)</b> <b>OFF-PEAK DAY 2 LANE CLOSURE</b> <b>NO DIVERSION ROUTE (MAX QUEUE METHOD)</b>	<b>AUGUST</b>
	Analyzed for 2009 Construction Season

**SUMMARY OF TRAFFIC MODEL OUTPUT**

MON-THUR                      WESTBOUND DIRECTION

TIME OF DAY	FLOWS AND CAPACITY IN VEH/HR						AVERAGE SPEEDS IN MPH				
	MAIN ROUTE		SITE CAPA CITY	FLOW		AV.DEL PER VEH (MINS)	AVERAGE QUEUE (VEH)	MAIN ROUTE		SITE	
	DEMAND FLOW	PCT HEAVY		MAIN ROUTE	'DIVER TED'			WITHOUT WORK ZONE	WITH WORK ZONE		
MID-1 AM	636	0.0	OFF	636	0	0.00	0	70.2	70.2	70.2	
1-2 AM	485	0.0	OFF	485	0	0.00	0	70.2	70.2	70.2	
2-3 AM	358	0.0	OFF	358	0	0.00	0	70.2	70.2	70.2	
3-4 AM	397	0.0	OFF	397	0	0.00	0	70.2	70.2	70.2	
4-5 AM	587	0.0	OFF	587	0	0.00	0	70.2	70.2	70.2	
5-6 AM	1025	0.0	OFF	1025	0	0.00	0	70.2	70.2	70.2	
6-7 AM	1709	0.0	OFF	1709	0	0.00	0	69.9	69.9	69.9	
7-8 AM	1943	0.0	OFF	1943	0	0.00	0	69.6	69.6	69.6	
8-9 AM	1878	0.0	OFF	1878	0	0.00	0	69.7	69.7	69.7	
9-10 AM	2111	0.0	1499	1901	210	9.43+	257	69.4	22.1	32.5	
10-11 AM	2360	0.0	1500	1500	860	16.24+	400	69.1	14.8	32.5	
11AM-NOON	2459	0.0	1500	1500	959	16.23+	400	69.0	14.8	32.5	
NOON-1PM	2472	0.0	1500	1500	972	16.23+	400	69.0	14.8	32.5	
1-2 PM	2506	0.0	1500	1500	1006	16.23+	400	68.9	14.8	32.5	
2-3 PM	2810	0.0	1500	1500	1310	16.20+	400	68.6	14.8	32.5	
3-4 PM	3208	0.0	1500	1500	1708	16.17+	400	68.1	14.8	32.5	
4-5 PM	3484	0.0	OFF	3484	0	0.46	31	67.7	61.4	61.4	
5-6 PM	3502	0.0	OFF	3502	0	0.00	0	67.7	67.7	67.7	
6-7 PM	2899	0.0	OFF	2899	0	0.00	0	68.4	68.4	68.4	
7-8 PM	2086	0.0	OFF	2086	0	0.00	0	69.4	69.4	69.4	
8-9 PM	1657	0.0	OFF	1657	0	0.00	0	70.0	70.0	70.0	
9-10 PM	1469	0.0	OFF	1469	0	0.00	0	70.2	70.2	70.2	
10-11 PM	1252	0.0	OFF	1252	0	0.00	0	70.2	70.2	70.2	
11PM-MID	955	0.0	OFF	955	0	0.00	0	70.2	70.2	70.2	

"OFF" INDICATES NO ROAD WORK (ALL LANES OPEN TO TRAFFIC)

+ INDICATES QUEUEING EXCEEDS USER-SPECIFIED MAXIMUM LIMIT

*----- SITE BREAKDOWN DELAYS -----*	
BREAKDOWN DURATION (MINS)	0
RANGE OF QUEUE DELAY - MIN	0.0
(VEH-H) MAX	0.0
AV BREAKDOWNS PER DAY	0.00
AV QUEUE DELAY/DAY (VEH-H)	0.0
AV TOTAL DELAY/DAY (VEH-H)	0.0

*----- SITE ACCIDENT DELAYS -----*	
BREAKDOWN DURATION (MINS)	0
RANGE OF QUEUE DELAY - MIN	0
(VEH-H) MAX	0
AV BREAKDOWNS PER DAY	0
AV QUEUE DELAY/DAY (VEH-H)	0
AV TOTAL DELAY/DAY (VEH-H)	0

AVERAGE ACCIDENT NUMBERS (PIA/DAY)	
MAIN ROUTE WITHOUT WORKS	0.0359
MAIN ROUTE WITH WORKS	0.0295
'DIVERSION'	0.0132
<small>PIA: Personal Injury Accidents</small>	
IMPACTS ON ROAD USERS	
ROAD USER COSTS PER DAY	\$61,218
CONGESTED HOURS PER DAY*	7

\*Delays Exceeding User-Specified Maximum

**IH 94: STH 50 TO STATE LINE (KENOSHA COUNTY)**  
**OFF-PEAK DAY 2 LANE CLOSURE**  
**NO DIVERSION ROUTE (MAX QUEUE METHOD)**

**AUGUST**

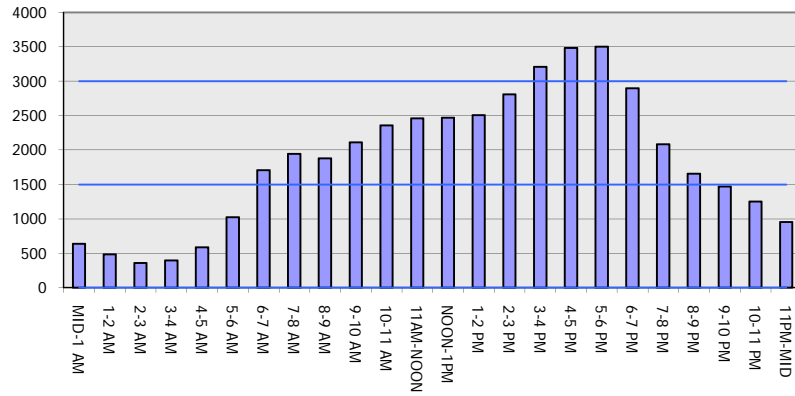
Analyzed for 2009  
 Construction Season

**GRAPHICAL REPRESENTATION OF TRAFFIC MODEL INPUT AND OUTPUT**

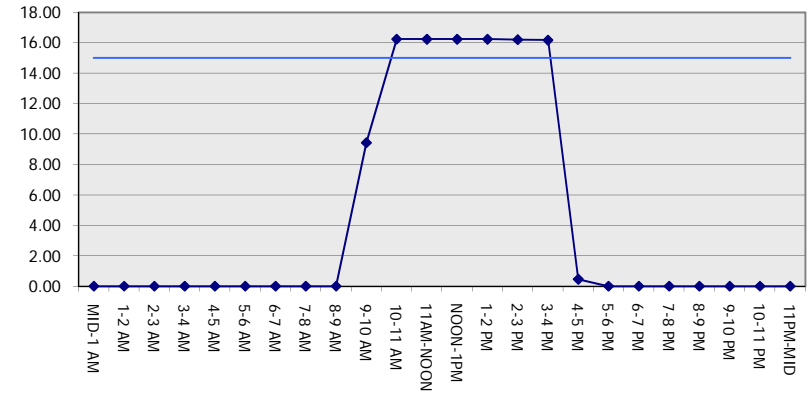
**MON-THUR**

**WESTBOUND DIRECTION**

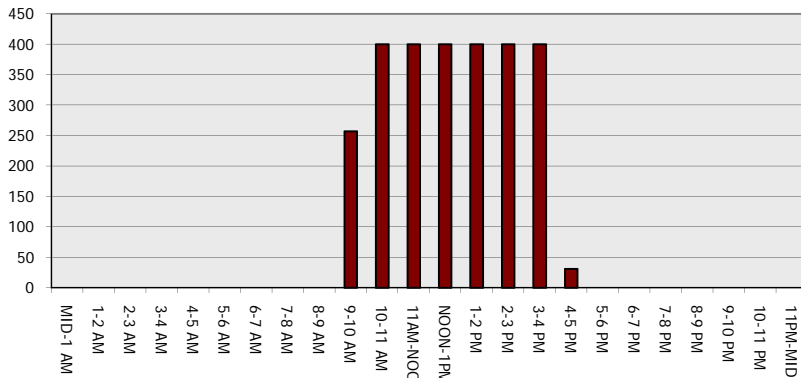
**Main Route - Traffic Demand (Vehicles Per Hour)**



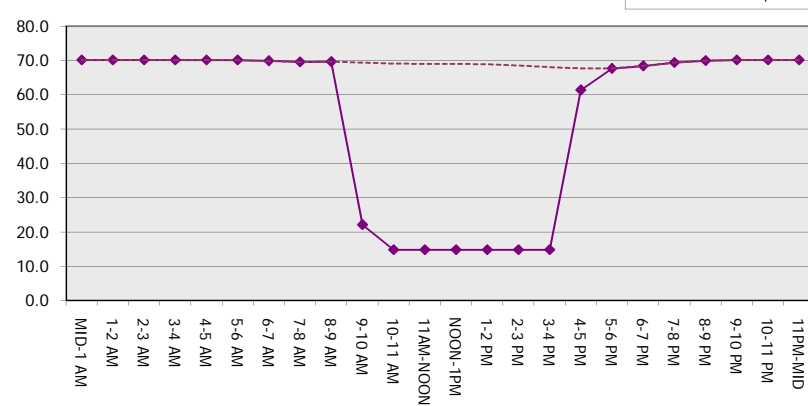
**Main Route Average Delay Per Vehicle (Minutes)**



**Main Route - Average Queue Length (Vehicles)**



**Main Route - Average Speed (MPH)**



<b>IH 94: STH 50 TO STATE LINE (KENOSHA COUNTY)</b> <b>OFF-PEAK DAY 2 LANE CLOSURE</b> <b>NO DIVERSION ROUTE (MAX QUEUE METHOD)</b>	<b>AUGUST</b>
	Analyzed for 2009 Construction Season

**SUMMARY OF TRAFFIC MODEL OUTPUT**

MON-THUR                      EASTBOUND DIRECTION

TIME OF DAY	FLOWS AND CAPACITY IN VEH/HR						AVERAGE SPEEDS IN MPH			
	MAIN ROUTE		SITE CAPA CITY	FLOW		AV.DEL PER VEH (MINS)	AVERAGE QUEUE (VEH)	MAIN ROUTE		SITE
	DEMAND FLOW	PCT HEAVY		MAIN ROUTE	'DIVER TED'			WITHOUT WORK ZONE	WITH WORK ZONE	
MID-1 AM	526	0.0	OFF	526	0	0.00	0	70.2	70.2	70.2
1-2 AM	398	0.0	OFF	398	0	0.00	0	70.2	70.2	70.2
2-3 AM	364	0.0	OFF	364	0	0.00	0	70.2	70.2	70.2
3-4 AM	458	0.0	OFF	458	0	0.00	0	70.2	70.2	70.2
4-5 AM	940	0.0	OFF	940	0	0.00	0	70.2	70.2	70.2
5-6 AM	2248	0.0	OFF	2248	0	0.00	0	69.2	69.2	69.2
6-7 AM	2976	0.0	OFF	2976	0	0.00	0	68.3	68.3	68.3
7-8 AM	2746	0.0	OFF	2746	0	0.00	0	68.6	68.6	68.6
8-9 AM	2441	0.0	OFF	2441	0	0.00	0	69.0	69.0	69.0
9-10 AM	2593	0.0	1499	1920	673	13.04+	326	68.8	17.5	34.7
10-11 AM	2586	0.0	1499	1500	1086	16.22+	399	68.8	14.8	32.5
11AM-NOON	2516	0.0	1500	1500	1016	16.23+	400	68.9	14.8	32.5
NOON-1PM	2486	0.0	1500	1500	986	16.23+	400	68.9	14.8	32.5
1-2 PM	2566	0.0	1500	1500	1066	16.22+	400	68.9	14.8	32.5
2-3 PM	2598	0.0	1500	1500	1098	16.22+	400	68.8	14.8	32.5
3-4 PM	2483	0.0	1500	1500	983	16.23+	400	68.9	14.8	32.5
4-5 PM	2357	0.0	OFF	2357	0	0.28	24	69.1	65.1	65.1
5-6 PM	2358	0.0	OFF	2358	0	0.00	0	69.1	69.1	69.1
6-7 PM	2223	0.0	OFF	2223	0	0.00	0	69.3	69.3	69.3
7-8 PM	1770	0.0	OFF	1770	0	0.00	0	69.9	69.9	69.9
8-9 PM	1489	0.0	OFF	1489	0	0.00	0	70.2	70.2	70.2
9-10 PM	1308	0.0	OFF	1308	0	0.00	0	70.2	70.2	70.2
10-11 PM	1002	0.0	OFF	1002	0	0.00	0	70.2	70.2	70.2
11PM-MID	705	0.0	OFF	705	0	0.00	0	70.2	70.2	70.2

"OFF" INDICATES NO ROAD WORK (ALL LANES OPEN TO TRAFFIC)

+ INDICATES QUEUEING EXCEEDS USER-SPECIFIED MAXIMUM LIMIT

*----- SITE BREAKDOWN DELAYS -----*	
BREAKDOWN DURATION (MINS)	0
RANGE OF QUEUE DELAY - MIN (VEH-H) MAX	0.0
AV BREAKDOWNS PER DAY	0.00
AV QUEUE DELAY/DAY (VEH-H)	0.0
AV TOTAL DELAY/DAY (VEH-H)	0.0

*----- SITE ACCIDENT DELAYS -----*	
BREAKDOWN DURATION (MINS)	0
RANGE OF QUEUE DELAY - MIN (VEH-H) MAX	0
AV BREAKDOWNS PER DAY	0
AV QUEUE DELAY/DAY (VEH-H)	0
AV TOTAL DELAY/DAY (VEH-H)	0

AVERAGE ACCIDENT NUMBERS (PIA/DAY)	
MAIN ROUTE WITHOUT WORKS	0.0358
MAIN ROUTE WITH WORKS	0.0295
'DIVERSION'	0.0130

PIA: Personal Injury Accidents

ECONOMIC IMPACT ON ROAD USERS	
ROAD USER COSTS PER DAY	\$62,038
CONGESTED HOURS PER DAY*	7

\*Delays Exceeding User-Specified Maximum

**IH 94: STH 50 TO STATE LINE (KENOSHA COUNTY)  
 OFF-PEAK DAY 2 LANE CLOSURE  
 NO DIVERSION ROUTE (MAX QUEUE METHOD)**

**AUGUST**  
 Analyzed for 2009  
 Construction Season

**GRAPHICAL REPRESENTATION OF TRAFFIC MODEL INPUT AND OUTPUT**  
**MON-THUR EASTBOUND DIRECTION**

