

STH 16: CTH C TO STH 190 (WAUKESHA COUNTY) CONTINUOUS (24 HOUR) CLOSURE NO DIVERSION ROUTE (MAX QUEUE METHOD)	OCTOBER
	Analyzed for 2009 Construction Season

SUMMARY OF TRAFFIC MODEL OUTPUT

MON-THUR WESTBOUND DIRECTION

TIME OF DAY	FLOWS AND CAPACITY IN VEH/HR						AVERAGE SPEEDS IN MPH				
	MAIN ROUTE		SITE CAPA CITY	FLOW		AV.DEL PER VEH (MINS)	AVERAGE QUEUE (VEH)	MAIN ROUTE		SITE	
	DEMAND FLOW	PCT HEAVY		MAIN ROUTE	'DIVER TED'			WITHOUT WORK ZONE	WITH WORK ZONE		
MID-1 AM	123	0.0	1500	123	0	0.43	0	66.1	62.7	45.0	
1-2 AM	66	0.0	1500	66	0	0.43	0	66.3	62.8	45.2	
2-3 AM	49	0.0	1500	49	0	0.43	0	66.3	62.8	45.3	
3-4 AM	38	0.0	1500	38	0	0.43	0	66.3	62.8	45.3	
4-5 AM	87	0.0	1500	87	0	0.43	0	66.2	62.7	45.1	
5-6 AM	293	0.0	1500	293	0	0.45	0	65.8	62.2	44.3	
6-7 AM	716	0.0	1500	716	0	0.49	0	65.1	61.2	42.7	
7-8 AM	1128	0.0	1500	1128	0	0.54	0	64.3	60.2	40.9	
8-9 AM	988	0.0	1500	988	0	0.52	0	64.5	60.6	41.7	
9-10 AM	806	0.0	1500	806	0	0.50	0	64.9	61.0	42.4	
10-11 AM	857	0.0	1500	857	0	0.51	0	64.8	60.9	42.2	
11AM-NOON	1015	0.0	1500	1015	0	0.52	0	64.5	60.5	41.6	
NOON-1PM	1090	0.0	1500	1090	0	0.53	0	64.3	60.4	41.4	
1-2 PM	1158	0.0	1499	1158	0	0.59	0	64.2	59.9	39.7	
2-3 PM	1493	0.0	1499	1493	0	1.47	16	63.6	53.8	32.4	
3-4 PM	2240	0.0	1500	1796	444	11.50+	305	62.2	26.1	30.8	
4-5 PM	2682	0.0	1499	1500	1182	15.23+	400	59.1	21.5	30.8	
5-6 PM	2933	0.0	1500	1500	1433	14.83+	400	56.4	21.5	30.8	
6-7 PM	1743	0.0	1500	1502	241	15.05+	380	63.2	22.2	30.8	
7-8 PM	1021	0.0	1499	1021	0	5.18	161	64.5	39.1	36.8	
8-9 PM	859	0.0	1500	859	0	0.51	0	64.8	60.9	42.2	
9-10 PM	755	0.0	1500	755	0	0.50	0	65.0	61.2	42.5	
10-11 PM	436	0.0	1500	436	0	0.46	0	65.6	61.9	43.8	
11PM-MID	283	0.0	1500	283	0	0.45	0	65.9	62.3	44.3	

+ INDICATES QUEUEING EXCEEDS USER-SPECIFIED MAXIMUM LIMIT

----- SITE BREAKDOWN DELAYS -----	
BREAKDOWN DURATION (MINS)	0
RANGE OF QUEUE DELAY - MIN (VEH-H) MAX	0.0
AV BREAKDOWNS PER DAY	0.00
AV QUEUE DELAY/DAY (VEH-H)	0.0
AV TOTAL DELAY/DAY (VEH-H)	0.0

----- SITE ACCIDENT DELAYS -----	
BREAKDOWN DURATION (MINS)	0
RANGE OF QUEUE DELAY - MIN (VEH-H) MAX	0
AV BREAKDOWNS PER DAY	0
AV QUEUE DELAY/DAY (VEH-H)	0
AV TOTAL DELAY/DAY (VEH-H)	0

AVERAGE ACCIDENT NUMBERS (PIA/DAY)	
MAIN ROUTE WITHOUT WORKS	0.0313
MAIN ROUTE WITH WORKS	0.0255
'DIVERSION'	0.0105
PIA: Personal Injury Accidents	
IMPACTS ON ROAD USERS	
ROAD USER COSTS PER DAY	\$31,486
CONGESTED HOURS PER DAY*	4

*Delays Exceeding User-Specified Maximum

**STH 16: CTH C TO STH 190 (WAUKESHA COUNTY)
CONTINUOUS (24 HOUR) CLOSURE
NO DIVERSION ROUTE (MAX QUEUE METHOD)**

OCTOBER

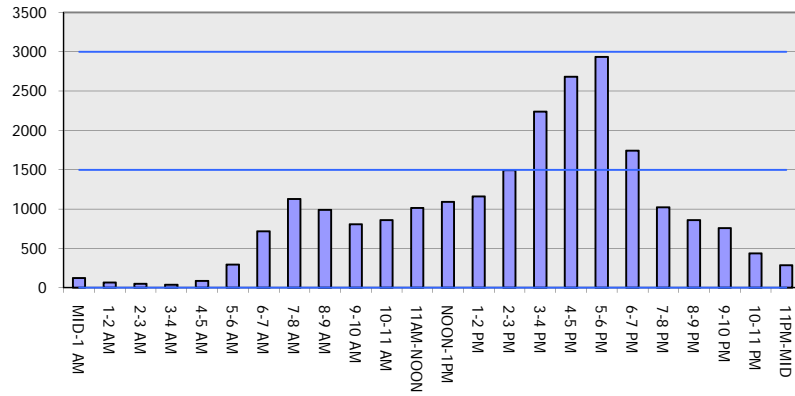
Analyzed for 2009
Construction Season

GRAPHICAL REPRESENTATION OF TRAFFIC MODEL INPUT AND OUTPUT

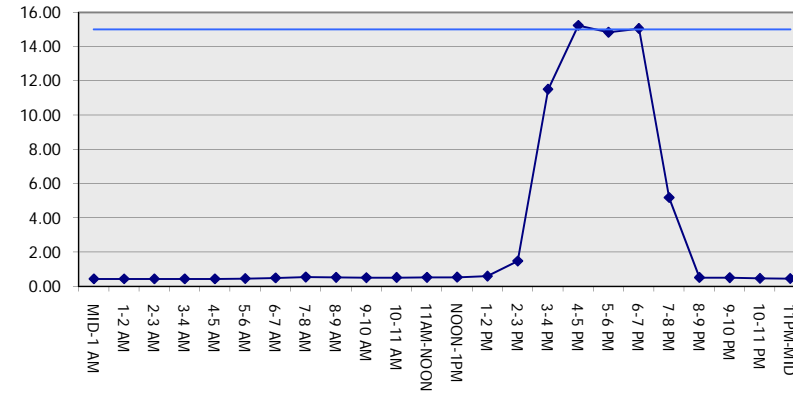
MON-THUR

WESTBOUND DIRECTION

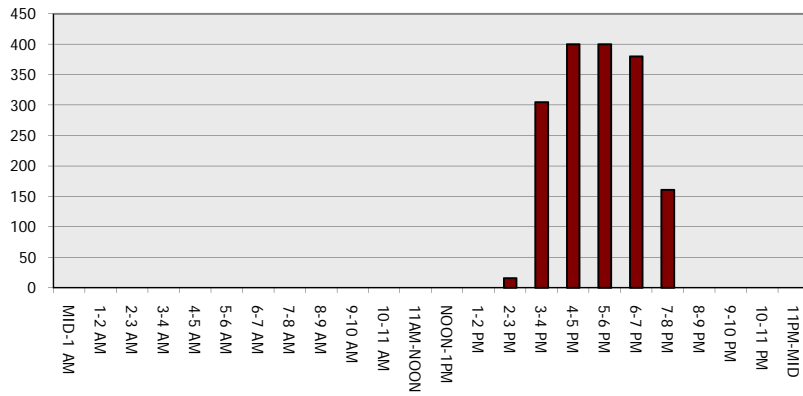
Main Route - Traffic Demand (Vehicles Per Hour)



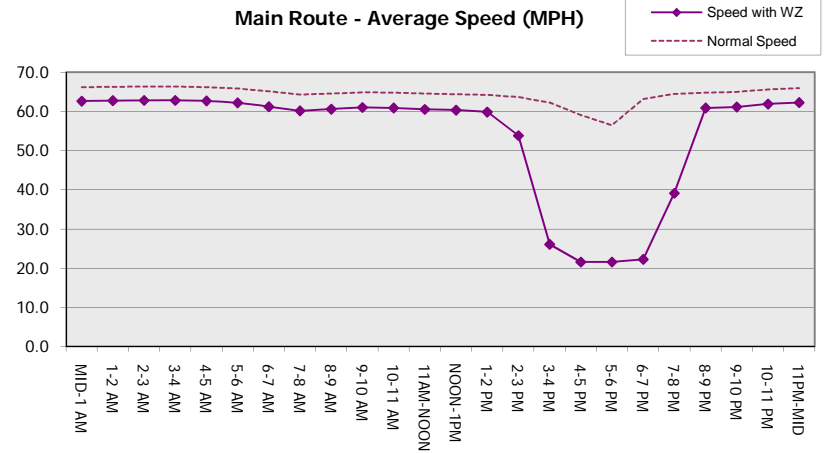
Main Route Average Delay Per Vehicle (Minutes)



Main Route - Average Queue Length (Vehicles)



Main Route - Average Speed (MPH)



STH 16: CTH C TO STH 190 (WAUKESHA COUNTY) CONTINUOUS (24 HOUR) CLOSURE NO DIVERSION ROUTE (MAX QUEUE METHOD)	OCTOBER
	Analyzed for 2009 Construction Season

SUMMARY OF TRAFFIC MODEL OUTPUT

MON-THUR EASTBOUND DIRECTION

TIME OF DAY	FLOWS AND CAPACITY IN VEH/HR							AVERAGE SPEEDS IN MPH		
	MAIN ROUTE		SITE CAPA CITY	FLOW		AV.DEL PER VEH (MINS)	AVERAGE QUEUE (VEH)	MAIN ROUTE		SITE
	DEMAND FLOW	PCT HEAVY		MAIN ROUTE	'DIVER TED'			WITHOUT WORK ZONE	WITH WORK ZONE	
MID-1 AM	46	0.0	1500	46	0	0.43	0	66.3	62.8	45.3
1-2 AM	49	0.0	1500	49	0	0.43	0	66.3	62.8	45.3
2-3 AM	46	0.0	1500	46	0	0.43	0	66.3	62.8	45.3
3-4 AM	85	0.0	1500	85	0	0.43	0	66.2	62.8	45.1
4-5 AM	293	0.0	1500	293	0	0.45	0	65.8	62.2	44.3
5-6 AM	1046	0.0	1499	1046	0	0.64	0	64.5	59.7	38.7
6-7 AM	2506	0.0	1499	1852	654	10.51+	287	60.9	27.1	30.8
7-8 AM	3464	0.0	1500	1500	1964	13.85+	400	51.0	21.5	30.8
8-9 AM	2424	0.0	1499	1500	924	15.60+	400	61.7	21.5	30.8
9-10 AM	1405	0.0	1500	1405	0	13.70+	343	63.8	23.7	30.8
10-11 AM	1172	0.0	1499	1172	0	3.99	108	64.2	42.9	35.5
11AM-NOON	1136	0.0	1500	1136	0	0.55	0	64.3	60.1	40.6
NOON-1PM	1129	0.0	1500	1129	0	0.54	0	64.3	60.2	40.9
1-2 PM	1050	0.0	1500	1050	0	0.52	0	64.4	60.5	41.5
2-3 PM	1201	0.0	1500	1201	0	0.64	0	64.1	59.4	38.4
3-4 PM	1426	0.0	1499	1426	0	0.93	0	63.7	57.2	32.4
4-5 PM	1534	0.0	1499	1534	0	1.57	15	63.5	53.3	30.8
5-6 PM	1489	0.0	1500	1489	0	2.75	47	63.6	47.5	31.1
6-7 PM	936	0.0	1500	936	0	0.53	0	64.6	60.6	41.9
7-8 PM	495	0.0	1500	495	0	0.47	0	65.5	61.8	43.5
8-9 PM	412	0.0	1500	412	0	0.46	0	65.6	62.0	43.8
9-10 PM	341	0.0	1500	341	0	0.46	0	65.8	62.2	44.1
10-11 PM	249	0.0	1500	249	0	0.45	0	66.0	62.3	44.5
11PM-MID	123	0.0	1500	123	0	0.43	0	66.1	62.7	45.0

+ INDICATES QUEUEING EXCEEDS USER-SPECIFIED MAXIMUM LIMIT

----- SITE BREAKDOWN DELAYS -----	
BREAKDOWN DURATION (MINS)	0
RANGE OF QUEUE DELAY - MIN (VEH-H) MAX	0.0
AV BREAKDOWNS PER DAY	0.00
AV QUEUE DELAY/DAY (VEH-H)	0.0
AV TOTAL DELAY/DAY (VEH-H)	0.0

----- SITE ACCIDENT DELAYS -----	
BREAKDOWN DURATION (MINS)	0
RANGE OF QUEUE DELAY - MIN (VEH-H) MAX	0
AV BREAKDOWNS PER DAY	0
AV QUEUE DELAY/DAY (VEH-H)	0
AV TOTAL DELAY/DAY (VEH-H)	0

AVERAGE ACCIDENT NUMBERS (PIA/DAY)	
MAIN ROUTE WITHOUT WORKS	0.0329
MAIN ROUTE WITH WORKS	0.0267
'DIVERSION'	0.0112

PIA: Personal Injury Accidents

ECONOMIC IMPACT ON ROAD USERS	
ROAD USER COSTS PER DAY	\$31,321
CONGESTED HOURS PER DAY*	4

*Delays Exceeding User-Specified Maximum

**STH 16: CTH C TO STH 190 (WAUKESHA COUNTY)
CONTINUOUS (24 HOUR) CLOSURE
NO DIVERSION ROUTE (MAX QUEUE METHOD)**

OCTOBER

Analyzed for 2009
Construction Season

GRAPHICAL REPRESENTATION OF TRAFFIC MODEL INPUT AND OUTPUT

MON-THUR EASTBOUND DIRECTION

