

STH 16: STH 190 TO IH 94 (WAUKESHA COUNTY) CONTINUOUS (24 HOUR) CLOSURE NO DIVERSION ROUTE (MAX QUEUE METHOD)	OCTOBER
	Analyzed for 2009 Construction Season

SUMMARY OF TRAFFIC MODEL OUTPUT

SATURDAY WESTBOUND DIRECTION

TIME OF DAY	FLOWS AND CAPACITY IN VEH/HR						AVERAGE SPEEDS IN MPH			
	MAIN ROUTE		SITE CAPA CITY	FLOW		AV.DEL PER VEH (MINS)	AVERAGE QUEUE (VEH)	MAIN ROUTE		SITE
	DEMAND FLOW	PCT HEAVY		MAIN ROUTE	'DIVER TED'			WITHOUT WORK ZONE	WITH WORK ZONE	
MID-1 AM	39	0.0	1500	39	0	0.43	0	66.3	55.8	45.3
1-2 AM	23	0.0	1500	23	0	0.42	0	66.3	55.8	45.4
2-3 AM	25	0.0	1500	25	0	0.42	0	66.3	55.8	45.4
3-4 AM	22	0.0	1500	22	0	0.42	0	66.3	55.8	45.4
4-5 AM	29	0.0	1500	29	0	0.43	0	66.3	55.8	45.4
5-6 AM	85	0.0	1500	85	0	0.43	0	66.2	55.6	45.1
6-7 AM	142	0.0	1500	142	0	0.44	0	66.1	55.5	44.9
7-8 AM	212	0.0	1500	212	0	0.44	0	66.0	55.2	44.6
8-9 AM	287	0.0	1500	287	0	0.45	0	65.8	55.0	44.3
9-10 AM	337	0.0	1500	337	0	0.46	0	65.8	54.8	44.2
10-11 AM	345	0.0	1500	345	0	0.46	0	65.8	54.8	44.1
11AM-NOON	332	0.0	1500	332	0	0.45	0	65.8	54.8	44.2
NOON-1PM	341	0.0	1500	341	0	0.46	0	65.8	54.8	44.2
1-2 PM	302	0.0	1500	302	0	0.45	0	65.8	54.9	44.3
2-3 PM	306	0.0	1500	306	0	0.45	0	65.8	54.9	44.3
3-4 PM	296	0.0	1500	296	0	0.45	0	65.8	55.0	44.3
4-5 PM	314	0.0	1500	314	0	0.45	0	65.8	54.9	44.2
5-6 PM	295	0.0	1500	295	0	0.45	0	65.8	55.0	44.3
6-7 PM	257	0.0	1500	257	0	0.45	0	65.9	55.1	44.5
7-8 PM	153	0.0	1500	153	0	0.44	0	66.1	55.4	44.9
8-9 PM	128	0.0	1500	128	0	0.43	0	66.1	55.5	45.0
9-10 PM	125	0.0	1500	125	0	0.43	0	66.1	55.5	45.0
10-11 PM	122	0.0	1500	122	0	0.43	0	66.1	55.5	45.0
11PM-MID	78	0.0	1500	78	0	0.43	0	66.3	55.6	45.2

----- SITE BREAKDOWN DELAYS -----	
BREAKDOWN DURATION (MINS)	0
RANGE OF QUEUE DELAY - MIN (VEH-H) MAX	0.0
AV BREAKDOWNS PER DAY	0.00
AV QUEUE DELAY/DAY (VEH-H)	0.0
AV TOTAL DELAY/DAY (VEH-H)	0.0

----- SITE ACCIDENT DELAYS -----	
BREAKDOWN DURATION (MINS)	0
RANGE OF QUEUE DELAY - MIN (VEH-H) MAX	0
AV BREAKDOWNS PER DAY	0
AV QUEUE DELAY/DAY (VEH-H)	0
AV TOTAL DELAY/DAY (VEH-H)	0

AVERAGE ACCIDENT NUMBERS (PIA/DAY)	
MAIN ROUTE WITHOUT WORKS	0.0018
MAIN ROUTE WITH WORKS	0.0015
'DIVERSION'	0.0000
<small>PIA: Personal Injury Accidents</small>	
IMPACTS ON ROAD USERS	
ROAD USER COSTS PER DAY	\$515
CONGESTED HOURS PER DAY*	0

*Delays Exceeding User-Specified Maximum

**STH 16: STH 190 TO IH 94 (WAUKESHA COUNTY)
CONTINUOUS (24 HOUR) CLOSURE
NO DIVERSION ROUTE (MAX QUEUE METHOD)**

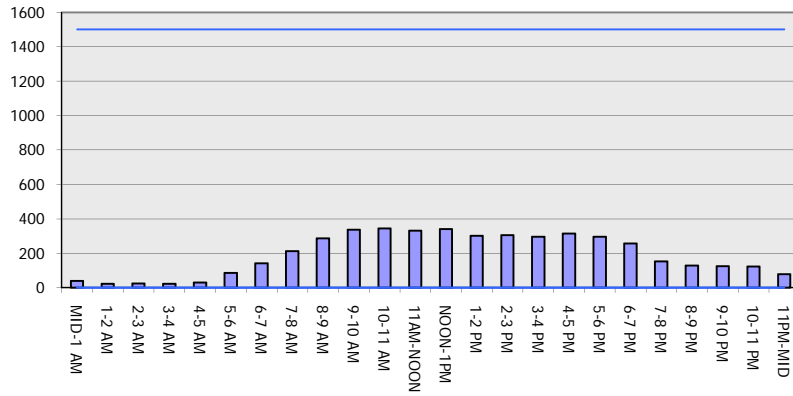
OCTOBER

Analyzed for 2009
Construction Season

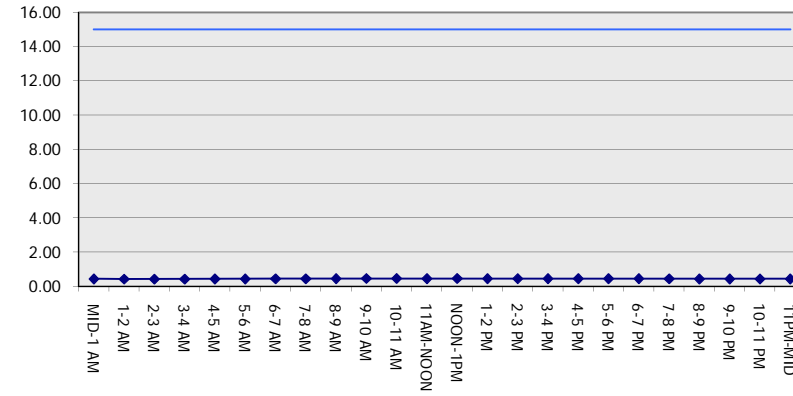
GRAPHICAL REPRESENTATION OF TRAFFIC MODEL INPUT AND OUTPUT

SATURDAY WESTBOUND DIRECTION

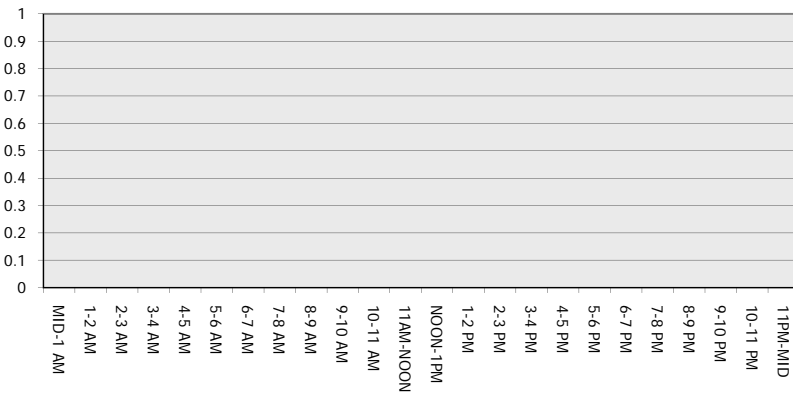
Main Route - Traffic Demand (Vehicles Per Hour)



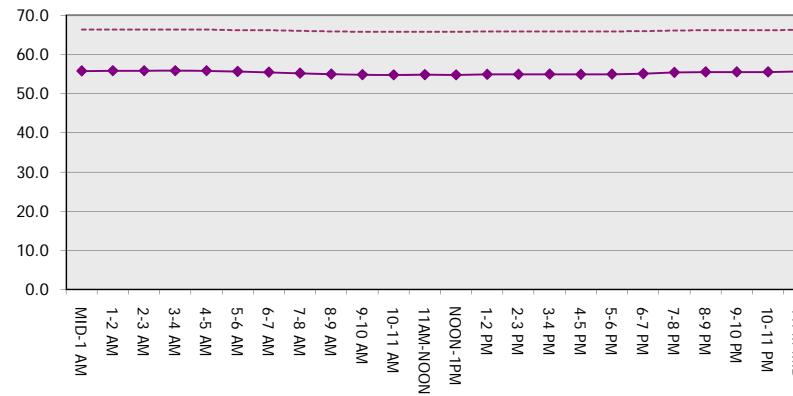
Main Route Average Delay Per Vehicle (Minutes)



Main Route - Average Queue Length (Vehicles)



Main Route - Average Speed (MPH)



STH 16: STH 190 TO IH 94 (WAUKESHA COUNTY) CONTINUOUS (24 HOUR) CLOSURE NO DIVERSION ROUTE (MAX QUEUE METHOD)	OCTOBER
	Analyzed for 2009 Construction Season

SUMMARY OF TRAFFIC MODEL OUTPUT

SATURDAY EASTBOUND DIRECTION

TIME OF DAY	FLOWS AND CAPACITY IN VEH/HR							AVERAGE SPEEDS IN MPH		
	MAIN ROUTE		SITE CAPA CITY	FLOW		AV.DEL PER VEH (MINS)	AVERAGE QUEUE (VEH)	MAIN ROUTE		SITE
	DEMAND FLOW	PCT HEAVY		MAIN ROUTE	'DIVER TED'			WITHOUT WORK ZONE	WITH WORK ZONE	
MID-1 AM	60	0.0	1500	60	0	0.43	0	66.3	55.7	45.3
1-2 AM	39	0.0	1500	39	0	0.43	0	66.3	55.8	45.3
2-3 AM	22	0.0	1500	22	0	0.42	0	66.3	55.8	45.4
3-4 AM	19	0.0	1500	19	0	0.42	0	66.3	55.8	45.4
4-5 AM	17	0.0	1500	17	0	0.42	0	66.3	55.8	45.5
5-6 AM	33	0.0	1500	33	0	0.43	0	66.3	55.8	45.3
6-7 AM	75	0.0	1500	75	0	0.43	0	66.3	55.6	45.2
7-8 AM	122	0.0	1500	122	0	0.43	0	66.1	55.5	45.0
8-9 AM	184	0.0	1500	184	0	0.44	0	66.0	55.3	44.8
9-10 AM	200	0.0	1500	200	0	0.44	0	66.0	55.3	44.7
10-11 AM	259	0.0	1500	259	0	0.45	0	65.9	55.1	44.5
11AM-NOON	279	0.0	1500	279	0	0.45	0	65.9	55.0	44.3
NOON-1PM	332	0.0	1500	332	0	0.45	0	65.8	54.8	44.2
1-2 PM	309	0.0	1500	309	0	0.45	0	65.8	54.9	44.2
2-3 PM	308	0.0	1500	308	0	0.45	0	65.8	54.9	44.3
3-4 PM	346	0.0	1500	346	0	0.46	0	65.8	54.8	44.1
4-5 PM	356	0.0	1500	356	0	0.46	0	65.7	54.8	44.1
5-6 PM	314	0.0	1500	314	0	0.45	0	65.8	54.9	44.2
6-7 PM	272	0.0	1500	272	0	0.45	0	65.9	55.0	44.4
7-8 PM	203	0.0	1500	203	0	0.44	0	66.0	55.3	44.6
8-9 PM	184	0.0	1500	184	0	0.44	0	66.0	55.3	44.8
9-10 PM	188	0.0	1500	188	0	0.44	0	66.0	55.3	44.7
10-11 PM	169	0.0	1500	169	0	0.44	0	66.1	55.3	44.8
11PM-MID	132	0.0	1500	132	0	0.44	0	66.1	55.5	45.0

----- SITE BREAKDOWN DELAYS -----	
BREAKDOWN DURATION (MINS)	0
RANGE OF QUEUE DELAY - MIN (VEH-H) MAX	0.0
AV BREAKDOWNS PER DAY	0.00
AV QUEUE DELAY/DAY (VEH-H)	0.0
AV TOTAL DELAY/DAY (VEH-H)	0.0

----- SITE ACCIDENT DELAYS -----	
BREAKDOWN DURATION (MINS)	0
RANGE OF QUEUE DELAY - MIN (VEH-H) MAX	0
AV BREAKDOWNS PER DAY	0
AV QUEUE DELAY/DAY (VEH-H)	0
AV TOTAL DELAY/DAY (VEH-H)	0

AVERAGE ACCIDENT NUMBERS (PIA/DAY)	
MAIN ROUTE WITHOUT WORKS	0.0018
MAIN ROUTE WITH WORKS	0.0015
'DIVERSION'	0.0000

PIA: Personal Injury Accidents

ECONOMIC IMPACT ON ROAD USERS	
ROAD USER COSTS PER DAY	\$494
CONGESTED HOURS PER DAY*	0

*Delays Exceeding User-Specified Maximum

**STH 16: STH 190 TO IH 94 (WAUKESHA COUNTY)
CONTINUOUS (24 HOUR) CLOSURE
NO DIVERSION ROUTE (MAX QUEUE METHOD)**

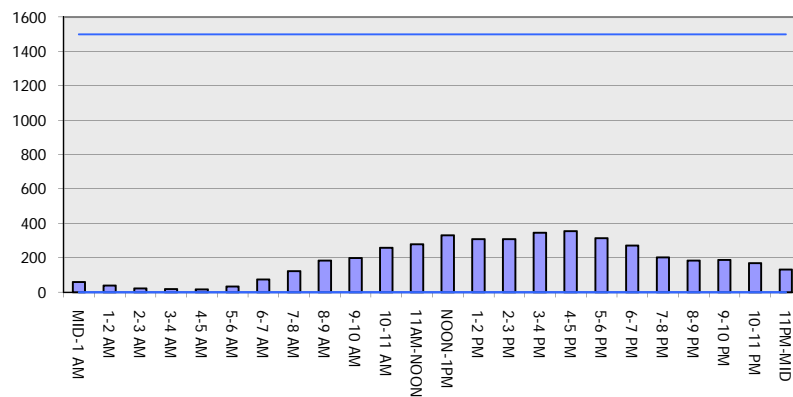
OCTOBER

Analyzed for 2009
Construction Season

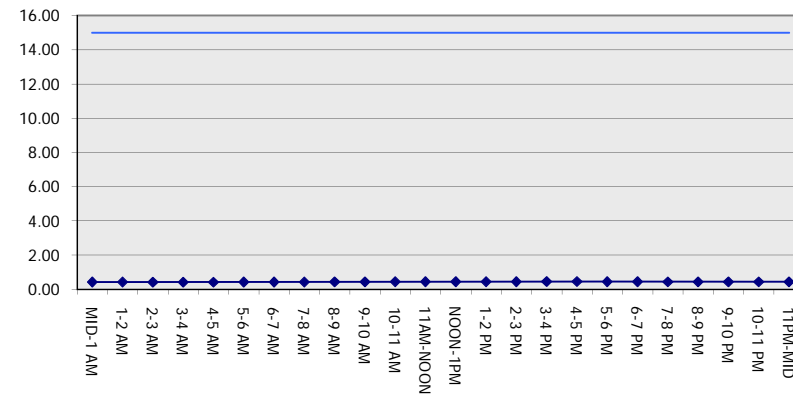
GRAPHICAL REPRESENTATION OF TRAFFIC MODEL INPUT AND OUTPUT

SATURDAY EASTBOUND DIRECTION

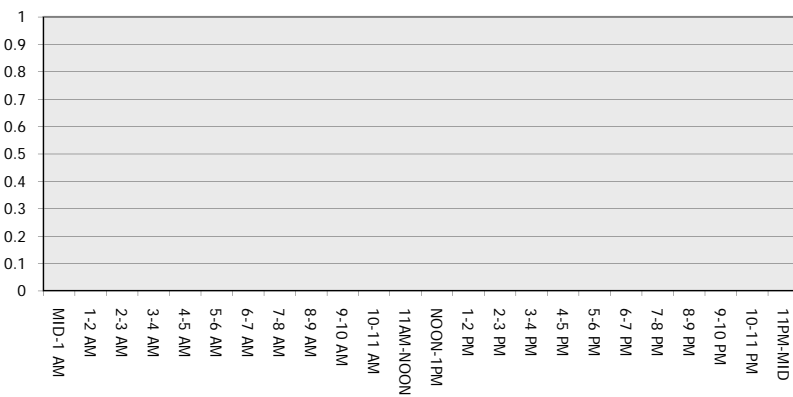
Main Route - Traffic Demand (Vehicles Per Hour)



Main Route Average Delay Per Vehicle (Minutes)



Main Route - Average Queue Length (Vehicles)



Main Route - Average Speed (MPH)

