

<b>STH 16: STH 190 TO IH 94 (WAUKESHA COUNTY)                  CONTINUOUS (24 HOUR) CLOSURE                  NO DIVERSION ROUTE (MAX QUEUE METHOD)</b>	<b>OCTOBER</b>
	Analyzed for 2009 Construction Season

**SUMMARY OF TRAFFIC MODEL OUTPUT**

MON-THUR                      WESTBOUND DIRECTION

TIME OF DAY	FLOWS AND CAPACITY IN VEH/HR						AVERAGE SPEEDS IN MPH			
	MAIN ROUTE		SITE CAPA CITY	FLOW		AV.DEL PER VEH (MINS)	AVERAGE QUEUE (VEH)	MAIN ROUTE		SITE
	DEMAND FLOW	PCT HEAVY		MAIN ROUTE	'DIVER TED'			WITHOUT WORK ZONE	WITH WORK ZONE	
MID-1 AM	13	0.0	1500	13	0	0.42	0	66.4	55.9	45.5
1-2 AM	13	0.0	1500	13	0	0.42	0	66.4	55.9	45.5
2-3 AM	12	0.0	1500	12	0	0.42	0	66.4	55.9	45.5
3-4 AM	23	0.0	1500	23	0	0.42	0	66.3	55.8	45.4
4-5 AM	80	0.0	1500	80	0	0.43	0	66.3	55.6	45.1
5-6 AM	286	0.0	1500	286	0	0.45	0	65.8	55.0	44.3
6-7 AM	685	0.0	1500	685	0	0.49	0	65.1	53.7	42.8
7-8 AM	947	0.0	1500	947	0	0.51	0	64.6	52.9	41.9
8-9 AM	663	0.0	1500	663	0	0.49	0	65.1	53.8	42.9
9-10 AM	384	0.0	1500	384	0	0.46	0	65.6	54.6	44.0
10-11 AM	320	0.0	1500	320	0	0.45	0	65.8	54.8	44.2
11AM-NOON	309	0.0	1500	309	0	0.45	0	65.8	54.9	44.2
NOON-1PM	308	0.0	1500	308	0	0.45	0	65.8	54.9	44.3
1-2 PM	286	0.0	1500	286	0	0.45	0	65.8	55.0	44.3
2-3 PM	328	0.0	1500	328	0	0.45	0	65.8	54.8	44.2
3-4 PM	390	0.0	1500	390	0	0.46	0	65.6	54.6	43.9
4-5 PM	418	0.0	1500	418	0	0.46	0	65.6	54.5	43.8
5-6 PM	406	0.0	1500	406	0	0.46	0	65.6	54.6	43.8
6-7 PM	255	0.0	1500	255	0	0.45	0	65.9	55.1	44.5
7-8 PM	135	0.0	1500	135	0	0.44	0	66.1	55.5	45.0
8-9 PM	113	0.0	1500	113	0	0.43	0	66.2	55.5	45.0
9-10 PM	93	0.0	1500	93	0	0.43	0	66.2	55.6	45.1
10-11 PM	68	0.0	1500	68	0	0.43	0	66.3	55.7	45.2
11PM-MID	33	0.0	1500	33	0	0.43	0	66.3	55.8	45.3

**\*----- SITE BREAKDOWN DELAYS -----\***

BREAKDOWN DURATION (MINS)	0
RANGE OF QUEUE DELAY - MIN (VEH-H) MAX	0.0
AV BREAKDOWNS PER DAY	0.00
AV QUEUE DELAY/DAY (VEH-H)	0.0
AV TOTAL DELAY/DAY (VEH-H)	0.0

**\*----- SITE ACCIDENT DELAYS -----\***

BREAKDOWN DURATION (MINS)	0
RANGE OF QUEUE DELAY - MIN (VEH-H) MAX	0
AV BREAKDOWNS PER DAY	0
AV QUEUE DELAY/DAY (VEH-H)	0
AV TOTAL DELAY/DAY (VEH-H)	0

**AVERAGE ACCIDENT NUMBERS (PIA/DAY)**

MAIN ROUTE WITHOUT WORKS	0.0026
MAIN ROUTE WITH WORKS	0.0022
'DIVERSION'	0.0000

PIA: Personal Injury Accidents

**IMPACTS ON ROAD USERS**

ROAD USER COSTS PER DAY	\$601
CONGESTED HOURS PER DAY*	0

\*Delays Exceeding User-Specified Maximum

**STH 16: STH 190 TO IH 94 (WAUKESHA COUNTY)  
CONTINUOUS (24 HOUR) CLOSURE  
NO DIVERSION ROUTE (MAX QUEUE METHOD)**

**OCTOBER**

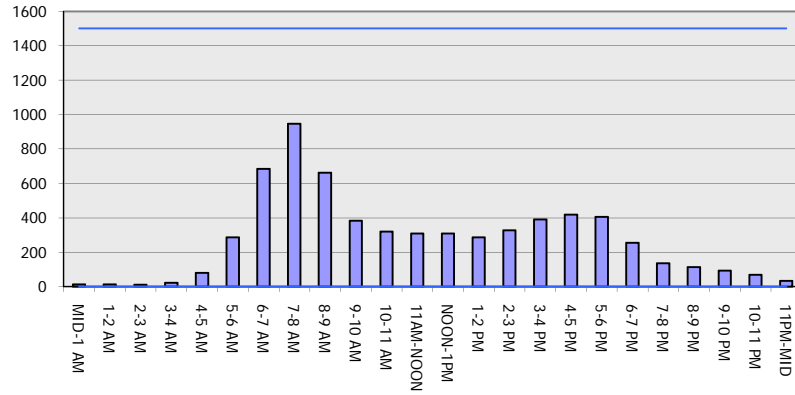
Analyzed for 2009  
Construction Season

**GRAPHICAL REPRESENTATION OF TRAFFIC MODEL INPUT AND OUTPUT**

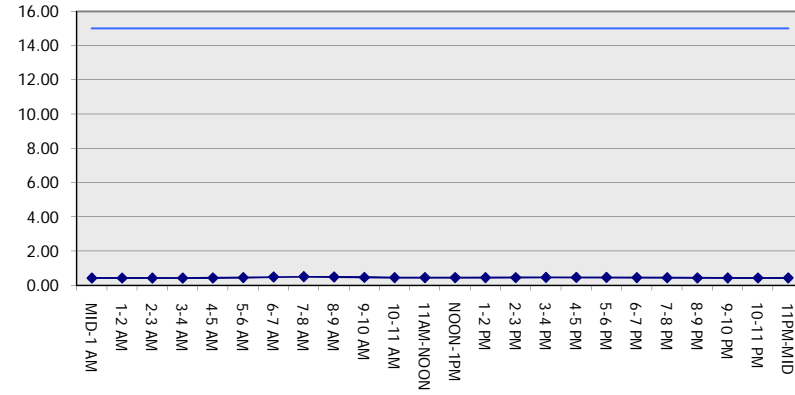
**MON-THUR**

**WESTBOUND DIRECTION**

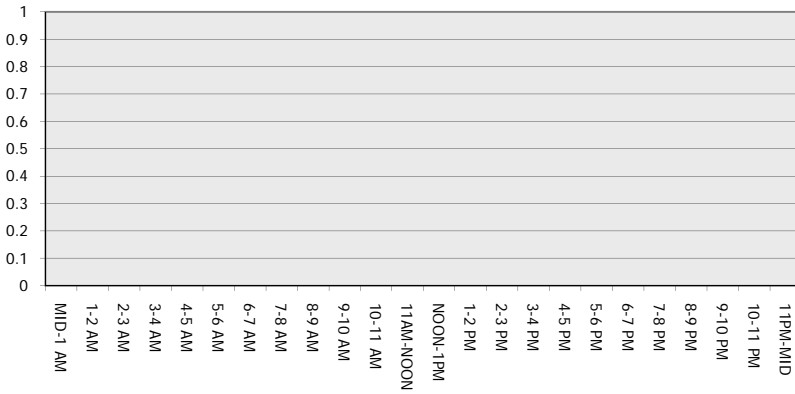
**Main Route - Traffic Demand (Vehicles Per Hour)**



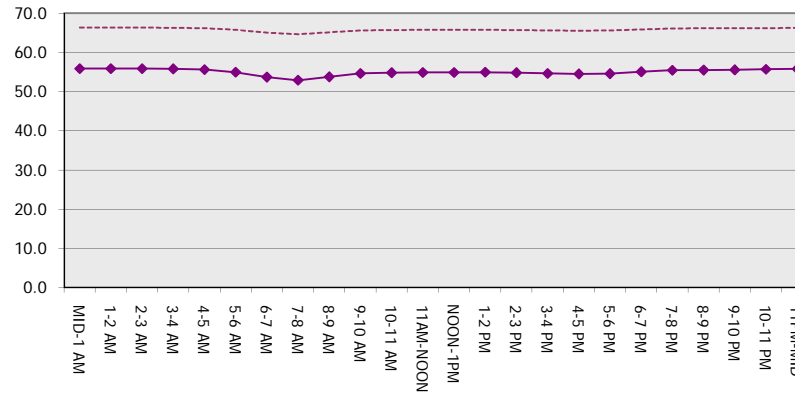
**Main Route Average Delay Per Vehicle (Minutes)**



**Main Route - Average Queue Length (Vehicles)**



**Main Route - Average Speed (MPH)**



<b>STH 16: STH 190 TO IH 94 (WAUKESHA COUNTY)</b> <b>CONTINUOUS (24 HOUR) CLOSURE</b> <b>NO DIVERSION ROUTE (MAX QUEUE METHOD)</b>	<b>OCTOBER</b>
	Analyzed for 2009 Construction Season

**SUMMARY OF TRAFFIC MODEL OUTPUT**

MON-THUR                      EASTBOUND DIRECTION

TIME OF DAY	FLOWS AND CAPACITY IN VEH/HR							AVERAGE SPEEDS IN MPH		
	MAIN ROUTE		SITE CAPA CITY	FLOW		AV.DEL PER VEH (MINS)	AVERAGE QUEUE (VEH)	MAIN ROUTE		SITE
	DEMAND FLOW	PCT HEAVY		MAIN ROUTE	'DIVER TED'			WITHOUT WORK ZONE	WITH WORK ZONE	
MID-1 AM	33	0.0	1500	33	0	0.43	0	66.3	55.8	45.3
1-2 AM	17	0.0	1500	17	0	0.42	0	66.3	55.8	45.5
2-3 AM	13	0.0	1500	13	0	0.42	0	66.4	55.9	45.5
3-4 AM	10	0.0	1500	10	0	0.42	0	66.4	55.9	45.5
4-5 AM	23	0.0	1500	23	0	0.42	0	66.3	55.8	45.4
5-6 AM	80	0.0	1500	80	0	0.43	0	66.3	55.6	45.1
6-7 AM	196	0.0	1500	196	0	0.44	0	66.0	55.3	44.7
7-8 AM	307	0.0	1500	307	0	0.45	0	65.8	54.9	44.3
8-9 AM	269	0.0	1500	269	0	0.45	0	65.9	55.0	44.4
9-10 AM	219	0.0	1500	219	0	0.44	0	66.0	55.2	44.6
10-11 AM	233	0.0	1500	233	0	0.45	0	66.0	55.1	44.5
11AM-NOON	277	0.0	1500	277	0	0.45	0	65.9	55.0	44.4
NOON-1PM	297	0.0	1500	297	0	0.45	0	65.8	55.0	44.3
1-2 PM	316	0.0	1500	316	0	0.45	0	65.8	54.9	44.2
2-3 PM	407	0.0	1500	407	0	0.46	0	65.6	54.6	43.8
3-4 PM	611	0.0	1500	611	0	0.48	0	65.3	53.9	43.1
4-5 PM	732	0.0	1500	732	0	0.49	0	65.0	53.5	42.7
5-6 PM	802	0.0	1500	802	0	0.50	0	64.9	53.3	42.4
6-7 PM	476	0.0	1500	476	0	0.47	0	65.5	54.3	43.6
7-8 PM	279	0.0	1500	279	0	0.45	0	65.9	55.0	44.3
8-9 PM	234	0.0	1500	234	0	0.45	0	66.0	55.1	44.5
9-10 PM	207	0.0	1500	207	0	0.44	0	66.0	55.2	44.6
10-11 PM	119	0.0	1500	119	0	0.43	0	66.1	55.5	45.0
11PM-MID	78	0.0	1500	78	0	0.43	0	66.3	55.6	45.2

*----- SITE BREAKDOWN DELAYS -----*	
BREAKDOWN DURATION (MINS)	0
RANGE OF QUEUE DELAY - MIN (VEH-H) MAX	0.0
AV BREAKDOWNS PER DAY	0.00
AV QUEUE DELAY/DAY (VEH-H)	0.0
AV TOTAL DELAY/DAY (VEH-H)	0.0

*----- SITE ACCIDENT DELAYS -----*	
BREAKDOWN DURATION (MINS)	0
RANGE OF QUEUE DELAY - MIN (VEH-H) MAX	0
AV BREAKDOWNS PER DAY	0
AV QUEUE DELAY/DAY (VEH-H)	0
AV TOTAL DELAY/DAY (VEH-H)	0

AVERAGE ACCIDENT NUMBERS (PIA/DAY)	
MAIN ROUTE WITHOUT WORKS	0.0025
MAIN ROUTE WITH WORKS	0.0021
'DIVERSION'	0.0000

PIA: Personal Injury Accidents

ECONOMIC IMPACT ON ROAD USERS	
ROAD USER COSTS PER DAY	\$566
CONGESTED HOURS PER DAY*	0

\*Delays Exceeding User-Specified Maximum

**STH 16: STH 190 TO IH 94 (WAUKESHA COUNTY)  
CONTINUOUS (24 HOUR) CLOSURE  
NO DIVERSION ROUTE (MAX QUEUE METHOD)**

**OCTOBER**

Analyzed for 2009  
Construction Season

**GRAPHICAL REPRESENTATION OF TRAFFIC MODEL INPUT AND OUTPUT  
MON-THUR EASTBOUND DIRECTION**

