

<b>STH 16: STH 190 TO IH 94 (WAUKESHA COUNTY)                  CONTINUOUS (24 HOUR) CLOSURE                  NO DIVERSION ROUTE (MAX QUEUE METHOD)</b>	<b>OCTOBER</b>
	Analyzed for 2009 Construction Season

**SUMMARY OF TRAFFIC MODEL OUTPUT**

FRIDAY WESTBOUND DIRECTION

TIME OF DAY	FLOWS AND CAPACITY IN VEH/HR						AVERAGE SPEEDS IN MPH			
	MAIN ROUTE		SITE CAPA CITY	FLOW		AV.DEL PER VEH (MINS)	AVERAGE QUEUE (VEH)	MAIN ROUTE		SITE
	DEMAND FLOW	PCT HEAVY		MAIN ROUTE	'DIVER TED'			WITHOUT WORK ZONE	WITH WORK ZONE	
MID-1 AM	16	0.0	1500	16	0	0.42	0	66.4	55.9	45.5
1-2 AM	14	0.0	1500	14	0	0.42	0	66.4	55.9	45.5
2-3 AM	11	0.0	1500	11	0	0.42	0	66.4	55.9	45.5
3-4 AM	22	0.0	1500	22	0	0.42	0	66.3	55.8	45.4
4-5 AM	66	0.0	1500	66	0	0.43	0	66.3	55.7	45.2
5-6 AM	257	0.0	1500	257	0	0.45	0	65.9	55.1	44.5
6-7 AM	638	0.0	1500	638	0	0.48	0	65.2	53.8	43.0
7-8 AM	904	0.0	1500	904	0	0.51	0	64.7	53.0	42.0
8-9 AM	626	0.0	1500	626	0	0.48	0	65.2	53.9	43.0
9-10 AM	376	0.0	1500	376	0	0.46	0	65.7	54.6	44.0
10-11 AM	333	0.0	1500	333	0	0.45	0	65.8	54.8	44.2
11AM-NOON	342	0.0	1500	342	0	0.46	0	65.8	54.8	44.1
NOON-1PM	320	0.0	1500	320	0	0.45	0	65.8	54.8	44.2
1-2 PM	297	0.0	1500	297	0	0.45	0	65.8	55.0	44.3
2-3 PM	369	0.0	1500	369	0	0.46	0	65.7	54.7	44.0
3-4 PM	396	0.0	1500	396	0	0.46	0	65.6	54.6	43.9
4-5 PM	403	0.0	1500	403	0	0.46	0	65.6	54.6	43.9
5-6 PM	406	0.0	1500	406	0	0.46	0	65.6	54.6	43.8
6-7 PM	307	0.0	1500	307	0	0.45	0	65.8	54.9	44.3
7-8 PM	162	0.0	1500	162	0	0.44	0	66.1	55.4	44.8
8-9 PM	120	0.0	1500	120	0	0.43	0	66.1	55.5	45.0
9-10 PM	125	0.0	1500	125	0	0.43	0	66.1	55.5	45.0
10-11 PM	110	0.0	1500	110	0	0.43	0	66.2	55.6	45.0
11PM-MID	66	0.0	1500	66	0	0.43	0	66.3	55.7	45.2

*----- SITE BREAKDOWN DELAYS -----*	
BREAKDOWN DURATION (MINS)	0
RANGE OF QUEUE DELAY - MIN (VEH-H) MAX	0.0
AV BREAKDOWNS PER DAY	0.00
AV QUEUE DELAY/DAY (VEH-H)	0.0
AV TOTAL DELAY/DAY (VEH-H)	0.0

*----- SITE ACCIDENT DELAYS -----*	
BREAKDOWN DURATION (MINS)	0
RANGE OF QUEUE DELAY - MIN (VEH-H) MAX	0
AV BREAKDOWNS PER DAY	0
AV QUEUE DELAY/DAY (VEH-H)	0
AV TOTAL DELAY/DAY (VEH-H)	0

AVERAGE ACCIDENT NUMBERS (PIA/DAY)	
MAIN ROUTE WITHOUT WORKS	0.0027
MAIN ROUTE WITH WORKS	0.0022
'DIVERSION'	0.0000
<small>PIA: Personal Injury Accidents</small>	
IMPACTS ON ROAD USERS	
ROAD USER COSTS PER DAY	\$625
CONGESTED HOURS PER DAY*	0

\*Delays Exceeding User-Specified Maximum

**STH 16: STH 190 TO IH 94 (WAUKESHA COUNTY)  
CONTINUOUS (24 HOUR) CLOSURE  
NO DIVERSION ROUTE (MAX QUEUE METHOD)**

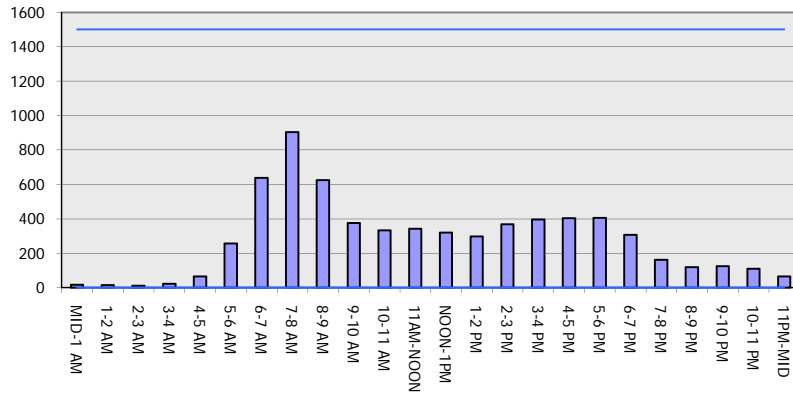
**OCTOBER**

Analyzed for 2009  
Construction Season

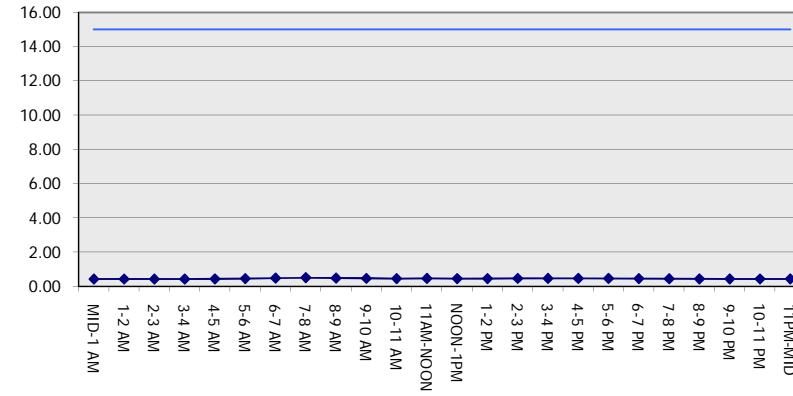
**GRAPHICAL REPRESENTATION OF TRAFFIC MODEL INPUT AND OUTPUT**

**FRIDAY WESTBOUND DIRECTION**

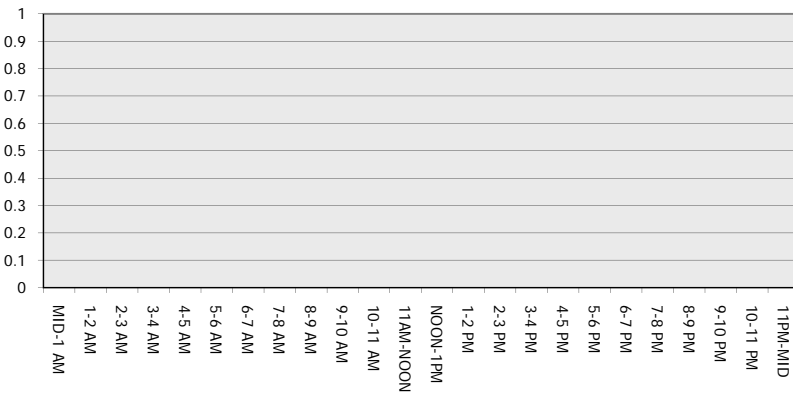
**Main Route - Traffic Demand (Vehicles Per Hour)**



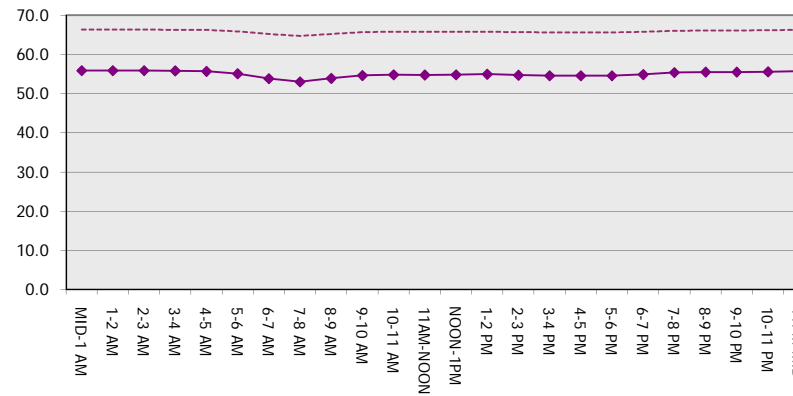
**Main Route Average Delay Per Vehicle (Minutes)**



**Main Route - Average Queue Length (Vehicles)**



**Main Route - Average Speed (MPH)**



<b>STH 16: STH 190 TO IH 94 (WAUKESHA COUNTY)                  CONTINUOUS (24 HOUR) CLOSURE                  NO DIVERSION ROUTE (MAX QUEUE METHOD)</b>	<b>OCTOBER</b>
	Analyzed for 2009 Construction Season

**SUMMARY OF TRAFFIC MODEL OUTPUT**

FRIDAY EASTBOUND DIRECTION

TIME OF DAY	FLOWS AND CAPACITY IN VEH/HR							AVERAGE SPEEDS IN MPH		
	MAIN ROUTE		SITE CAPA CITY	FLOW		AV.DEL PER VEH (MINS)	AVERAGE QUEUE (VEH)	MAIN ROUTE		SITE
	DEMAND FLOW	PCT HEAVY		MAIN ROUTE	'DIVER TED'			WITHOUT WORK ZONE	WITH WORK ZONE	
MID-1 AM	46	0.0	1500	46	0	0.43	0	66.3	55.8	45.3
1-2 AM	24	0.0	1500	24	0	0.42	0	66.3	55.8	45.4
2-3 AM	17	0.0	1500	17	0	0.42	0	66.3	55.8	45.5
3-4 AM	10	0.0	1500	10	0	0.42	0	66.4	55.9	45.5
4-5 AM	18	0.0	1500	18	0	0.42	0	66.3	55.8	45.5
5-6 AM	71	0.0	1500	71	0	0.43	0	66.3	55.7	45.2
6-7 AM	186	0.0	1500	186	0	0.44	0	66.0	55.3	44.7
7-8 AM	297	0.0	1500	297	0	0.45	0	65.8	55.0	44.3
8-9 AM	267	0.0	1500	267	0	0.45	0	65.9	55.0	44.4
9-10 AM	230	0.0	1500	230	0	0.44	0	66.0	55.1	44.6
10-11 AM	240	0.0	1500	240	0	0.45	0	66.0	55.1	44.5
11AM-NOON	308	0.0	1500	308	0	0.45	0	65.8	54.9	44.3
NOON-1PM	323	0.0	1500	323	0	0.45	0	65.8	54.8	44.2
1-2 PM	363	0.0	1500	363	0	0.46	0	65.7	54.7	44.0
2-3 PM	446	0.0	1500	446	0	0.47	0	65.6	54.5	43.7
3-4 PM	598	0.0	1500	598	0	0.48	0	65.3	54.0	43.2
4-5 PM	762	0.0	1500	762	0	0.50	0	65.0	53.5	42.5
5-6 PM	782	0.0	1500	782	0	0.50	0	65.0	53.4	42.5
6-7 PM	473	0.0	1500	473	0	0.47	0	65.5	54.4	43.6
7-8 PM	296	0.0	1500	296	0	0.45	0	65.8	55.0	44.3
8-9 PM	228	0.0	1500	228	0	0.44	0	66.0	55.1	44.6
9-10 PM	211	0.0	1500	211	0	0.44	0	66.0	55.2	44.6
10-11 PM	177	0.0	1500	177	0	0.44	0	66.1	55.3	44.8
11PM-MID	113	0.0	1500	113	0	0.43	0	66.2	55.5	45.0

*----- SITE BREAKDOWN DELAYS -----*	
BREAKDOWN DURATION (MINS)	0
RANGE OF QUEUE DELAY - MIN (VEH-H) MAX	0.0
AV BREAKDOWNS PER DAY	0.00
AV QUEUE DELAY/DAY (VEH-H)	0.0
AV TOTAL DELAY/DAY (VEH-H)	0.0

*----- SITE ACCIDENT DELAYS -----*	
BREAKDOWN DURATION (MINS)	0
RANGE OF QUEUE DELAY - MIN (VEH-H) MAX	0
AV BREAKDOWNS PER DAY	0
AV QUEUE DELAY/DAY (VEH-H)	0
AV TOTAL DELAY/DAY (VEH-H)	0

AVERAGE ACCIDENT NUMBERS (PIA/DAY)	
MAIN ROUTE WITHOUT WORKS	0.0026
MAIN ROUTE WITH WORKS	0.0022
'DIVERSION'	0.0000

PIA: Personal Injury Accidents

ECONOMIC IMPACT ON ROAD USERS	
ROAD USER COSTS PER DAY	\$607
CONGESTED HOURS PER DAY*	0

\*Delays Exceeding User-Specified Maximum

**STH 16: STH 190 TO IH 94 (WAUKESHA COUNTY)  
CONTINUOUS (24 HOUR) CLOSURE  
NO DIVERSION ROUTE (MAX QUEUE METHOD)**

**OCTOBER**

Analyzed for 2009  
Construction Season

**GRAPHICAL REPRESENTATION OF TRAFFIC MODEL INPUT AND OUTPUT  
FRIDAY EASTBOUND DIRECTION**

