

<b>STH 16: STH 190 TO IH 94 (WAUKESHA COUNTY)                  CONTINUOUS (24 HOUR) CLOSURE                  NO DIVERSION ROUTE (MAX QUEUE METHOD)</b>	<b>AUGUST</b>
	Analyzed for 2009 Construction Season

**SUMMARY OF TRAFFIC MODEL OUTPUT**

SATURDAY WESTBOUND DIRECTION

TIME OF DAY	FLOWS AND CAPACITY IN VEH/HR						AVERAGE SPEEDS IN MPH			
	MAIN ROUTE		SITE CAPA CITY	FLOW		AV.DEL PER VEH (MINS)	AVERAGE QUEUE (VEH)	MAIN ROUTE		SITE
	DEMAND FLOW	PCT HEAVY		MAIN ROUTE	'DIVER TED'			WITHOUT WORK ZONE	WITH WORK ZONE	
MID-1 AM	42	0.0	1500	42	0	0.43	0	66.3	55.8	45.3
1-2 AM	31	0.0	1500	31	0	0.43	0	66.3	55.8	45.4
2-3 AM	24	0.0	1500	24	0	0.42	0	66.3	55.8	45.4
3-4 AM	21	0.0	1500	21	0	0.42	0	66.3	55.8	45.4
4-5 AM	30	0.0	1500	30	0	0.43	0	66.3	55.8	45.4
5-6 AM	73	0.0	1500	73	0	0.43	0	66.3	55.6	45.2
6-7 AM	128	0.0	1500	128	0	0.43	0	66.1	55.5	45.0
7-8 AM	172	0.0	1500	172	0	0.44	0	66.1	55.3	44.8
8-9 AM	265	0.0	1500	265	0	0.45	0	65.9	55.0	44.4
9-10 AM	295	0.0	1500	295	0	0.45	0	65.8	55.0	44.3
10-11 AM	312	0.0	1500	312	0	0.45	0	65.8	54.9	44.2
11AM-NOON	313	0.0	1500	313	0	0.45	0	65.8	54.9	44.2
NOON-1PM	317	0.0	1500	317	0	0.45	0	65.8	54.9	44.2
1-2 PM	287	0.0	1500	287	0	0.45	0	65.8	55.0	44.3
2-3 PM	297	0.0	1500	297	0	0.45	0	65.8	55.0	44.3
3-4 PM	275	0.0	1500	275	0	0.45	0	65.9	55.0	44.4
4-5 PM	308	0.0	1500	308	0	0.45	0	65.8	54.9	44.3
5-6 PM	281	0.0	1500	281	0	0.45	0	65.9	55.0	44.3
6-7 PM	235	0.0	1500	235	0	0.45	0	66.0	55.1	44.5
7-8 PM	205	0.0	1500	205	0	0.44	0	66.0	55.2	44.6
8-9 PM	231	0.0	1500	231	0	0.44	0	66.0	55.1	44.6
9-10 PM	184	0.0	1500	184	0	0.44	0	66.0	55.3	44.8
10-11 PM	158	0.0	1500	158	0	0.44	0	66.1	55.4	44.8
11PM-MID	102	0.0	1500	102	0	0.43	0	66.2	55.6	45.1

*----- SITE BREAKDOWN DELAYS -----*	
BREAKDOWN DURATION (MINS)	0
RANGE OF QUEUE DELAY - MIN (VEH-H) MAX	0.0
AV BREAKDOWNS PER DAY	0.00
AV QUEUE DELAY/DAY (VEH-H)	0.0
AV TOTAL DELAY/DAY (VEH-H)	0.0

*----- SITE ACCIDENT DELAYS -----*	
BREAKDOWN DURATION (MINS)	0
RANGE OF QUEUE DELAY - MIN (VEH-H) MAX	0
AV BREAKDOWNS PER DAY	0
AV QUEUE DELAY/DAY (VEH-H)	0
AV TOTAL DELAY/DAY (VEH-H)	0

AVERAGE ACCIDENT NUMBERS (PIA/DAY)	
MAIN ROUTE WITHOUT WORKS	0.0018
MAIN ROUTE WITH WORKS	0.0015
'DIVERSION'	0.0000
PIA: Personal Injury Accidents	
IMPACTS ON ROAD USERS	
ROAD USER COSTS PER DAY	\$511
CONGESTED HOURS PER DAY*	0

\*Delays Exceeding User-Specified Maximum

**STH 16: STH 190 TO IH 94 (WAUKESHA COUNTY)  
CONTINUOUS (24 HOUR) CLOSURE  
NO DIVERSION ROUTE (MAX QUEUE METHOD)**

**AUGUST**

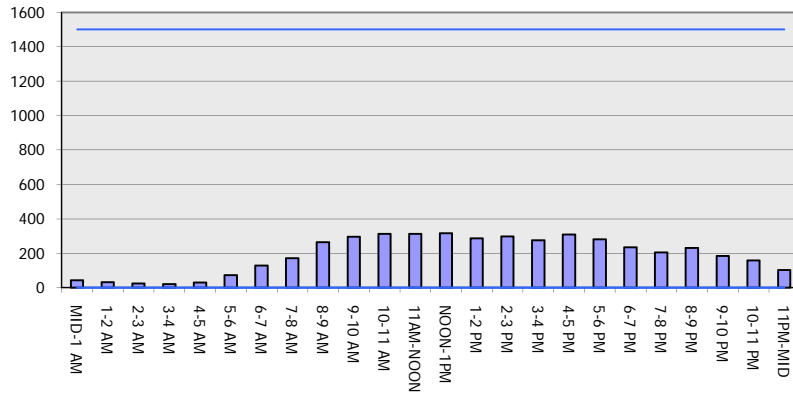
Analyzed for 2009  
Construction Season

**GRAPHICAL REPRESENTATION OF TRAFFIC MODEL INPUT AND OUTPUT**

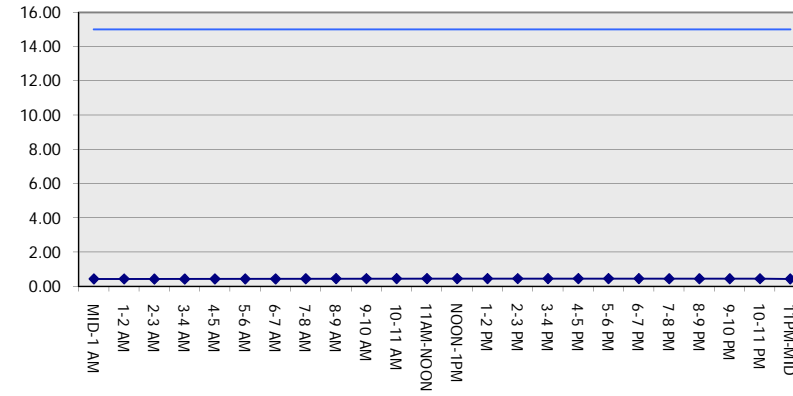
**SATURDAY**

**WESTBOUND DIRECTION**

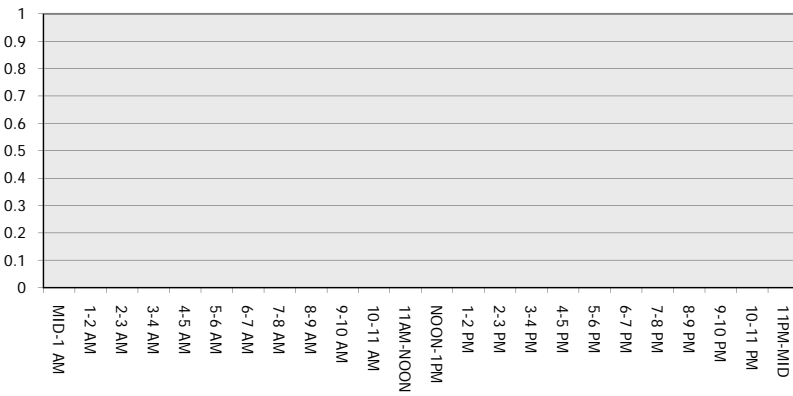
**Main Route - Traffic Demand (Vehicles Per Hour)**



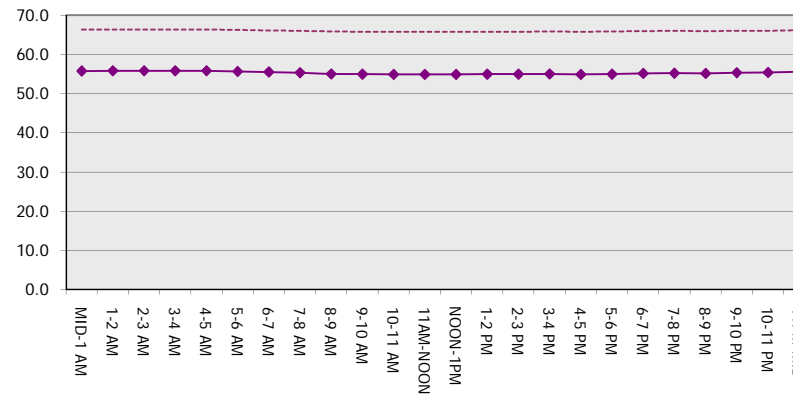
**Main Route Average Delay Per Vehicle (Minutes)**



**Main Route - Average Queue Length (Vehicles)**



**Main Route - Average Speed (MPH)**



<b>STH 16: STH 190 TO IH 94 (WAUKESHA COUNTY)                  CONTINUOUS (24 HOUR) CLOSURE                  NO DIVERSION ROUTE (MAX QUEUE METHOD)</b>	<b>AUGUST</b>
	Analyzed for 2009 Construction Season

**SUMMARY OF TRAFFIC MODEL OUTPUT**

SATURDAY EASTBOUND DIRECTION

TIME OF DAY	FLOWS AND CAPACITY IN VEH/HR							AVERAGE SPEEDS IN MPH		
	MAIN ROUTE		SITE CAPA CITY	FLOW		AV.DEL PER VEH (MINS)	AVERAGE QUEUE (VEH)	MAIN ROUTE		SITE
	DEMAND FLOW	PCT HEAVY		MAIN ROUTE	'DIVER TED'			WITHOUT WORK ZONE	WITH WORK ZONE	
MID-1 AM	77	0.0	1500	77	0	0.43	0	66.3	55.6	45.2
1-2 AM	37	0.0	1500	37	0	0.43	0	66.3	55.8	45.3
2-3 AM	29	0.0	1500	29	0	0.43	0	66.3	55.8	45.4
3-4 AM	19	0.0	1500	19	0	0.42	0	66.3	55.8	45.4
4-5 AM	17	0.0	1500	17	0	0.42	0	66.3	55.8	45.5
5-6 AM	37	0.0	1500	37	0	0.43	0	66.3	55.8	45.3
6-7 AM	67	0.0	1500	67	0	0.43	0	66.3	55.7	45.2
7-8 AM	107	0.0	1500	107	0	0.43	0	66.2	55.6	45.1
8-9 AM	163	0.0	1500	163	0	0.44	0	66.1	55.4	44.8
9-10 AM	193	0.0	1500	193	0	0.44	0	66.0	55.3	44.7
10-11 AM	263	0.0	1500	263	0	0.45	0	65.9	55.0	44.4
11AM-NOON	293	0.0	1500	293	0	0.45	0	65.8	55.0	44.3
NOON-1PM	331	0.0	1500	331	0	0.45	0	65.8	54.8	44.2
1-2 PM	347	0.0	1500	347	0	0.46	0	65.8	54.8	44.1
2-3 PM	336	0.0	1500	336	0	0.46	0	65.8	54.8	44.2
3-4 PM	340	0.0	1500	340	0	0.46	0	65.8	54.8	44.2
4-5 PM	339	0.0	1500	339	0	0.46	0	65.8	54.8	44.2
5-6 PM	348	0.0	1500	348	0	0.46	0	65.8	54.8	44.1
6-7 PM	264	0.0	1500	264	0	0.45	0	65.9	55.0	44.4
7-8 PM	213	0.0	1500	213	0	0.44	0	66.0	55.2	44.6
8-9 PM	195	0.0	1500	195	0	0.44	0	66.0	55.3	44.7
9-10 PM	193	0.0	1500	193	0	0.44	0	66.0	55.3	44.7
10-11 PM	179	0.0	1500	179	0	0.44	0	66.1	55.3	44.8
11PM-MID	124	0.0	1500	124	0	0.43	0	66.1	55.5	45.0

*----- SITE BREAKDOWN DELAYS -----*	
BREAKDOWN DURATION (MINS)	0
RANGE OF QUEUE DELAY - MIN (VEH-H) MAX	0.0
AV BREAKDOWNS PER DAY	0.00
AV QUEUE DELAY/DAY (VEH-H)	0.0
AV TOTAL DELAY/DAY (VEH-H)	0.0

*----- SITE ACCIDENT DELAYS -----*	
BREAKDOWN DURATION (MINS)	0
RANGE OF QUEUE DELAY - MIN (VEH-H) MAX	0
AV BREAKDOWNS PER DAY	0
AV QUEUE DELAY/DAY (VEH-H)	0
AV TOTAL DELAY/DAY (VEH-H)	0

AVERAGE ACCIDENT NUMBERS (PIA/DAY)	
MAIN ROUTE WITHOUT WORKS	0.0018
MAIN ROUTE WITH WORKS	0.0015
'DIVERSION'	0.0000

PIA: Personal Injury Accidents

ECONOMIC IMPACT ON ROAD USERS	
ROAD USER COSTS PER DAY	\$506
CONGESTED HOURS PER DAY*	0

\*Delays Exceeding User-Specified Maximum

**STH 16: STH 190 TO IH 94 (WAUKESHA COUNTY)  
CONTINUOUS (24 HOUR) CLOSURE  
NO DIVERSION ROUTE (MAX QUEUE METHOD)**

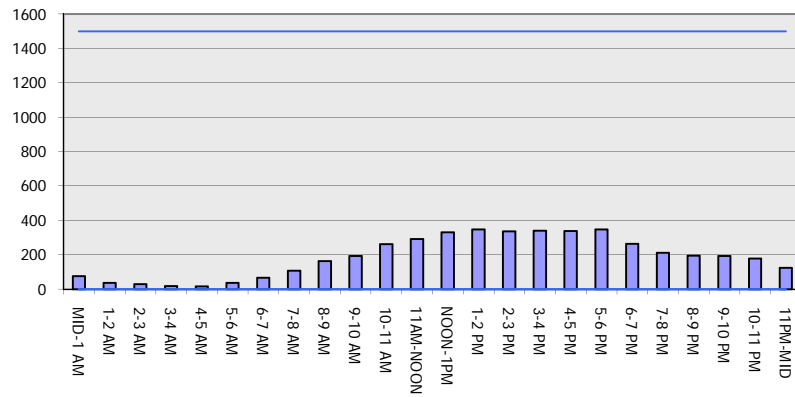
**AUGUST**

Analyzed for 2009  
Construction Season

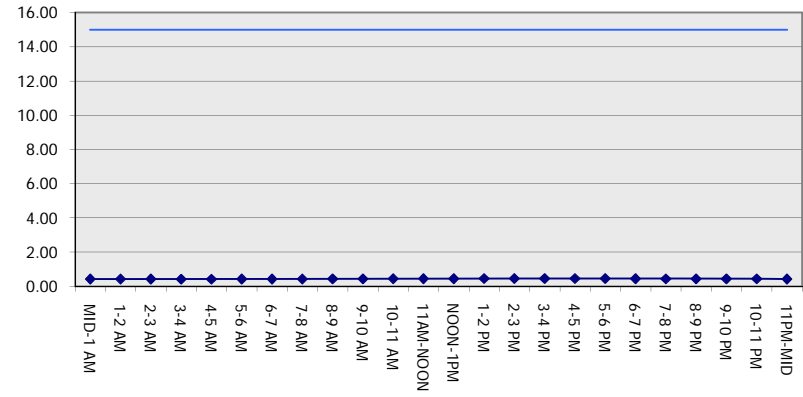
**GRAPHICAL REPRESENTATION OF TRAFFIC MODEL INPUT AND OUTPUT**

**SATURDAY EASTBOUND DIRECTION**

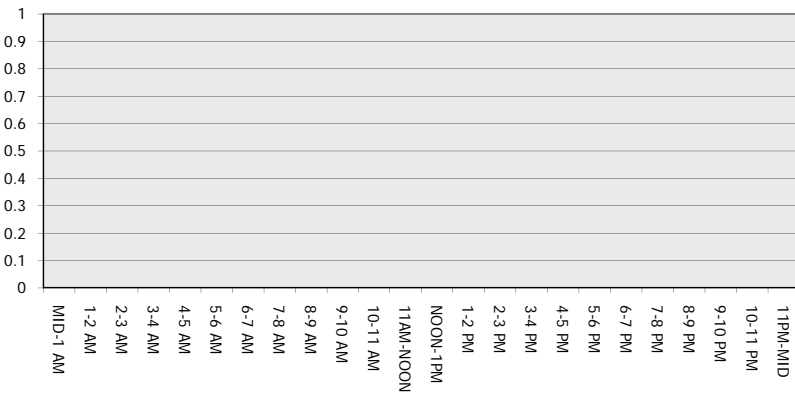
**Main Route - Traffic Demand (Vehicles Per Hour)**



**Main Route Average Delay Per Vehicle (Minutes)**



**Main Route - Average Queue Length (Vehicles)**



**Main Route - Average Speed (MPH)**

