

<b>STH 16: STH 190 TO IH 94 (WAUKESHA COUNTY)                  CONTINUOUS (24 HOUR) CLOSURE                  NO DIVERSION ROUTE (MAX QUEUE METHOD)</b>	<b>AUGUST</b>
	Analyzed for 2009 Construction Season

**SUMMARY OF TRAFFIC MODEL OUTPUT**

FRIDAY WESTBOUND DIRECTION

TIME OF DAY	FLOWS AND CAPACITY IN VEH/HR						AVERAGE SPEEDS IN MPH			
	MAIN ROUTE		SITE CAPA CITY	FLOW		AV.DEL PER VEH (MINS)	AVERAGE QUEUE (VEH)	MAIN ROUTE		SITE
	DEMAND FLOW	PCT HEAVY		MAIN ROUTE	'DIVER TED'			WITHOUT WORK ZONE	WITH WORK ZONE	
MID-1 AM	27	0.0	1500	27	0	0.43	0	66.3	55.8	45.4
1-2 AM	19	0.0	1500	19	0	0.42	0	66.3	55.8	45.4
2-3 AM	16	0.0	1500	16	0	0.42	0	66.4	55.9	45.5
3-4 AM	27	0.0	1500	27	0	0.43	0	66.3	55.8	45.4
4-5 AM	71	0.0	1500	71	0	0.43	0	66.3	55.7	45.2
5-6 AM	229	0.0	1500	229	0	0.44	0	66.0	55.1	44.6
6-7 AM	544	0.0	1500	544	0	0.48	0	65.4	54.2	43.3
7-8 AM	776	0.0	1500	776	0	0.50	0	65.0	53.4	42.5
8-9 AM	560	0.0	1500	560	0	0.48	0	65.3	54.1	43.3
9-10 AM	384	0.0	1500	384	0	0.46	0	65.6	54.6	44.0
10-11 AM	378	0.0	1500	378	0	0.46	0	65.7	54.6	44.0
11AM-NOON	349	0.0	1500	349	0	0.46	0	65.8	54.8	44.1
NOON-1PM	356	0.0	1500	356	0	0.46	0	65.7	54.8	44.1
1-2 PM	341	0.0	1500	341	0	0.46	0	65.8	54.8	44.2
2-3 PM	351	0.0	1500	351	0	0.46	0	65.7	54.8	44.1
3-4 PM	355	0.0	1500	355	0	0.46	0	65.7	54.8	44.1
4-5 PM	388	0.0	1500	388	0	0.46	0	65.6	54.6	44.0
5-6 PM	390	0.0	1500	390	0	0.46	0	65.6	54.6	43.9
6-7 PM	285	0.0	1500	285	0	0.45	0	65.8	55.0	44.3
7-8 PM	202	0.0	1500	202	0	0.44	0	66.0	55.3	44.6
8-9 PM	196	0.0	1500	196	0	0.44	0	66.0	55.3	44.7
9-10 PM	154	0.0	1500	154	0	0.44	0	66.1	55.4	44.9
10-11 PM	127	0.0	1500	127	0	0.43	0	66.1	55.5	45.0
11PM-MID	86	0.0	1500	86	0	0.43	0	66.2	55.6	45.1

**\*----- SITE BREAKDOWN DELAYS -----\***

BREAKDOWN DURATION (MINS)	0
RANGE OF QUEUE DELAY - MIN (VEH-H) MAX	0.0
AV BREAKDOWNS PER DAY	0.00
AV QUEUE DELAY/DAY (VEH-H)	0.0
AV TOTAL DELAY/DAY (VEH-H)	0.0

**\*----- SITE ACCIDENT DELAYS -----\***

BREAKDOWN DURATION (MINS)	0
RANGE OF QUEUE DELAY - MIN (VEH-H) MAX	0
AV BREAKDOWNS PER DAY	0
AV QUEUE DELAY/DAY (VEH-H)	0
AV TOTAL DELAY/DAY (VEH-H)	0

**AVERAGE ACCIDENT NUMBERS (PIA/DAY)**

MAIN ROUTE WITHOUT WORKS	0.0026
MAIN ROUTE WITH WORKS	0.0022
'DIVERSION'	0.0000

PIA: Personal Injury Accidents

**IMPACTS ON ROAD USERS**

ROAD USER COSTS PER DAY	\$617
CONGESTED HOURS PER DAY*	0

\*Delays Exceeding User-Specified Maximum

**STH 16: STH 190 TO IH 94 (WAUKESHA COUNTY)  
CONTINUOUS (24 HOUR) CLOSURE  
NO DIVERSION ROUTE (MAX QUEUE METHOD)**

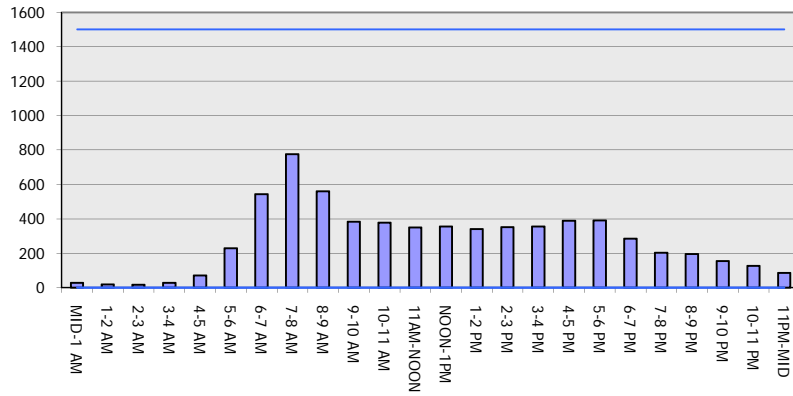
**AUGUST**

Analyzed for 2009  
Construction Season

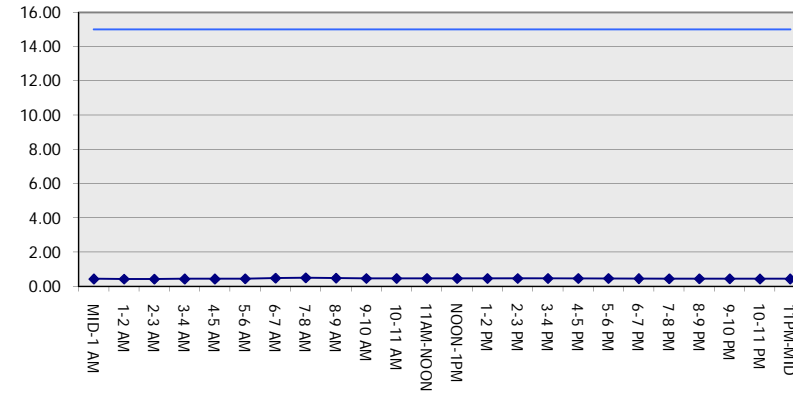
**GRAPHICAL REPRESENTATION OF TRAFFIC MODEL INPUT AND OUTPUT**

**FRIDAY WESTBOUND DIRECTION**

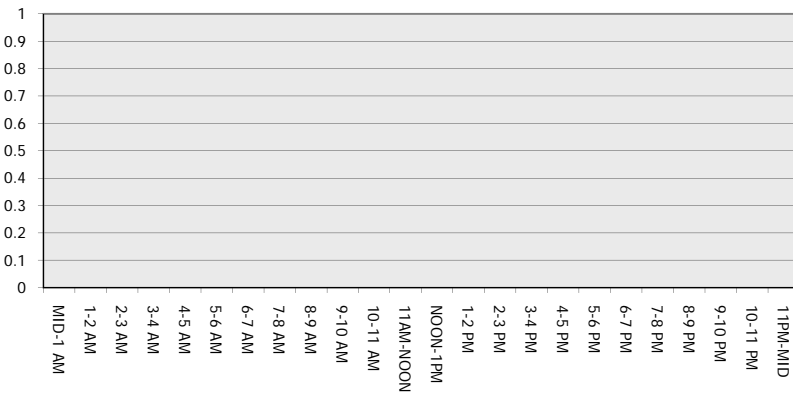
**Main Route - Traffic Demand (Vehicles Per Hour)**



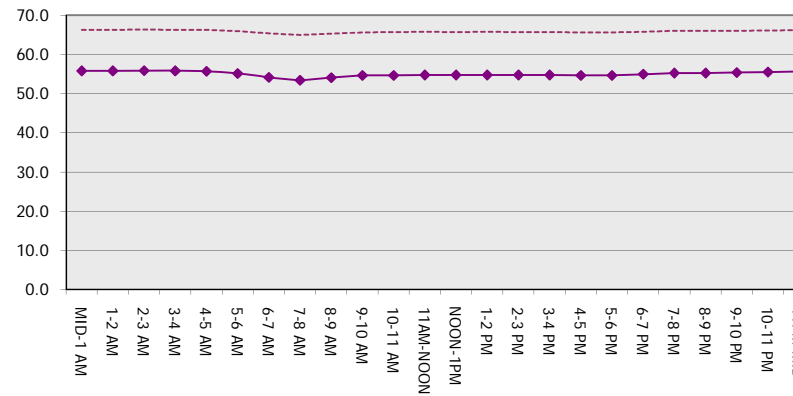
**Main Route Average Delay Per Vehicle (Minutes)**



**Main Route - Average Queue Length (Vehicles)**



**Main Route - Average Speed (MPH)**



<b>STH 16: STH 190 TO IH 94 (WAUKESHA COUNTY)                  CONTINUOUS (24 HOUR) CLOSURE                  NO DIVERSION ROUTE (MAX QUEUE METHOD)</b>	<b>AUGUST</b>
	Analyzed for 2009 Construction Season

**SUMMARY OF TRAFFIC MODEL OUTPUT**

FRIDAY EASTBOUND DIRECTION

TIME OF DAY	FLOWS AND CAPACITY IN VEH/HR							AVERAGE SPEEDS IN MPH		
	MAIN ROUTE		SITE CAPA CITY	FLOW		AV.DEL PER VEH (MINS)	AVERAGE QUEUE (VEH)	MAIN ROUTE		SITE
	DEMAND FLOW	PCT HEAVY		MAIN ROUTE	'DIVER TED'			WITHOUT WORK ZONE	WITH WORK ZONE	
MID-1 AM	61	0.0	1500	61	0	0.43	0	66.3	55.7	45.3
1-2 AM	30	0.0	1500	30	0	0.43	0	66.3	55.8	45.4
2-3 AM	22	0.0	1500	22	0	0.42	0	66.3	55.8	45.4
3-4 AM	12	0.0	1500	12	0	0.42	0	66.4	55.9	45.5
4-5 AM	22	0.0	1500	22	0	0.42	0	66.3	55.8	45.4
5-6 AM	78	0.0	1500	78	0	0.43	0	66.3	55.6	45.2
6-7 AM	159	0.0	1500	159	0	0.44	0	66.1	55.4	44.8
7-8 AM	264	0.0	1500	264	0	0.45	0	65.9	55.0	44.4
8-9 AM	259	0.0	1500	259	0	0.45	0	65.9	55.1	44.5
9-10 AM	235	0.0	1500	235	0	0.45	0	66.0	55.1	44.5
10-11 AM	285	0.0	1500	285	0	0.45	0	65.8	55.0	44.3
11AM-NOON	324	0.0	1500	324	0	0.45	0	65.8	54.8	44.2
NOON-1PM	370	0.0	1500	370	0	0.46	0	65.7	54.7	44.0
1-2 PM	368	0.0	1500	368	0	0.46	0	65.7	54.7	44.0
2-3 PM	427	0.0	1500	427	0	0.46	0	65.6	54.5	43.8
3-4 PM	576	0.0	1500	576	0	0.48	0	65.3	54.0	43.2
4-5 PM	703	0.0	1500	703	0	0.49	0	65.1	53.7	42.7
5-6 PM	758	0.0	1500	758	0	0.50	0	65.0	53.5	42.5
6-7 PM	456	0.0	1500	456	0	0.47	0	65.5	54.4	43.7
7-8 PM	291	0.0	1500	291	0	0.45	0	65.8	55.0	44.3
8-9 PM	230	0.0	1500	230	0	0.44	0	66.0	55.1	44.6
9-10 PM	233	0.0	1500	233	0	0.45	0	66.0	55.1	44.5
10-11 PM	182	0.0	1500	182	0	0.44	0	66.1	55.3	44.8
11PM-MID	159	0.0	1500	159	0	0.44	0	66.1	55.4	44.8

*----- SITE BREAKDOWN DELAYS -----*	
BREAKDOWN DURATION (MINS)	0
RANGE OF QUEUE DELAY - MIN (VEH-H) MAX	0.0
AV BREAKDOWNS PER DAY	0.00
AV QUEUE DELAY/DAY (VEH-H)	0.0
AV TOTAL DELAY/DAY (VEH-H)	0.0

*----- SITE ACCIDENT DELAYS -----*	
BREAKDOWN DURATION (MINS)	0
RANGE OF QUEUE DELAY - MIN (VEH-H) MAX	0
AV BREAKDOWNS PER DAY	0
AV QUEUE DELAY/DAY (VEH-H)	0
AV TOTAL DELAY/DAY (VEH-H)	0

AVERAGE ACCIDENT NUMBERS (PIA/DAY)	
MAIN ROUTE WITHOUT WORKS	0.0026
MAIN ROUTE WITH WORKS	0.0022
'DIVERSION'	0.0000

PIA: Personal Injury Accidents

ECONOMIC IMPACT ON ROAD USERS	
ROAD USER COSTS PER DAY	\$608
CONGESTED HOURS PER DAY*	0

\*Delays Exceeding User-Specified Maximum

**STH 16: STH 190 TO IH 94 (WAUKESHA COUNTY)  
CONTINUOUS (24 HOUR) CLOSURE  
NO DIVERSION ROUTE (MAX QUEUE METHOD)**

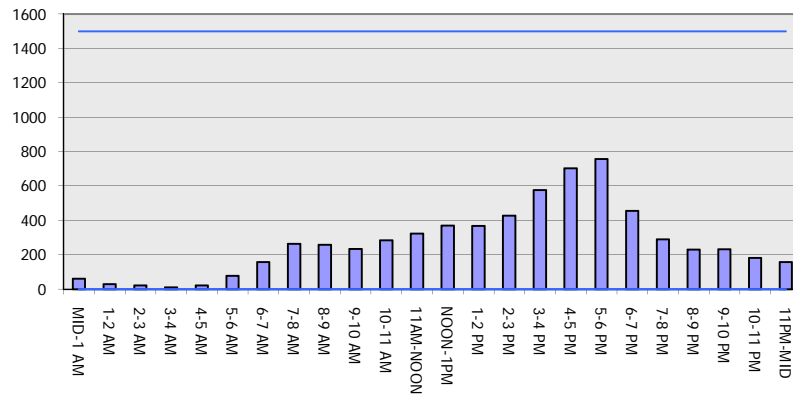
**AUGUST**

Analyzed for 2009  
Construction Season

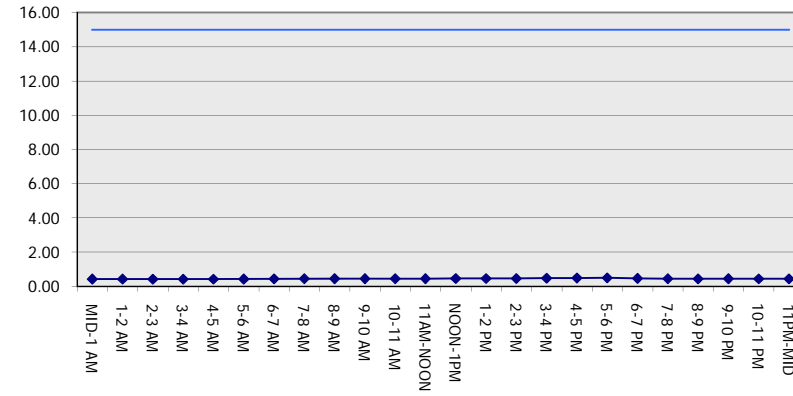
**GRAPHICAL REPRESENTATION OF TRAFFIC MODEL INPUT AND OUTPUT**

**FRIDAY EASTBOUND DIRECTION**

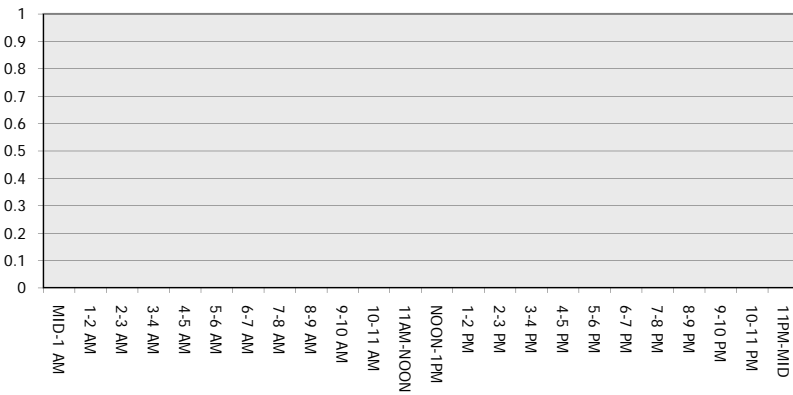
**Main Route - Traffic Demand (Vehicles Per Hour)**



**Main Route Average Delay Per Vehicle (Minutes)**



**Main Route - Average Queue Length (Vehicles)**



**Main Route - Average Speed (MPH)**

