

**IH 94: USH 18 TO CTH O (WAUKESHA COUNTY)
CONTINUOUS (24 HOUR) 2 LANE CLOSURE
NO DIVERSION ROUTE (MAX QUEUE METHOD)**

OCTOBER

Analyzed for 2009
Construction Season

SUMMARY OF TRAFFIC MODEL OUTPUT

FRIDAY WESTBOUND DIRECTION

TIME OF DAY	FLOWS AND CAPACITY IN VEH/HR							AVERAGE SPEEDS IN MPH			
	MAIN ROUTE		SITE CAPA CITY	FLOW		AV.DEL PER VEH (MINS)	AVERAGE QUEUE (VEH)	MAIN ROUTE		SITE	
	DEMAND FLOW	PCT HEAVY		MAIN ROUTE	'DIVER TED'			WITHOUT WORK ZONE	WITH WORK ZONE		
MID-1 AM	325	0.0	1500	325	0	1.16	40	70.2	50.1	44.0	
1-2 AM	239	0.0	1500	239	0	0.50	0	70.2	59.9	44.5	
2-3 AM	277	0.0	1500	277	0	0.51	0	70.2	59.7	44.4	
3-4 AM	410	0.0	1500	410	0	0.52	0	70.2	59.5	43.8	
4-5 AM	761	0.0	1500	761	0	0.56	0	69.8	58.6	42.5	
5-6 AM	1991	0.0	1499	1991	0	3.93	138	68.2	29.5	30.8	
6-7 AM	4201	0.0	1500	1500	2701	16.00+	400	62.2	10.6	31.7	
7-8 AM	5309	0.0	1500	1500	3809	15.54+	400	54.6	10.6	31.7	
8-9 AM	4681	0.0	1500	1500	3181	15.82+	400	58.9	10.6	31.7	
9-10 AM	3795	0.0	1500	1500	2295	16.14+	399	65.0	10.6	31.7	
10-11 AM	3944	0.0	1500	1500	2444	16.09+	400	63.9	10.6	31.7	
11AM-NOON	4367	0.0	1500	1500	2867	15.94+	400	61.0	10.6	31.7	
NOON-1PM	4629	0.0	1500	1500	3129	15.84+	400	59.2	10.6	31.7	
1-2 PM	4888	0.0	1500	1500	3388	15.73+	400	57.4	10.6	31.7	
2-3 PM	5378	0.0	1500	1500	3878	15.51+	400	54.1	10.6	31.7	
3-4 PM	5678	0.0	1500	1500	4178	15.36+	400	52.0	10.6	31.7	
4-5 PM	5153	0.0	1500	1500	3653	15.62+	400	55.6	10.6	31.7	
5-6 PM	4917	0.0	1500	1500	3417	15.72+	400	57.3	10.6	31.7	
6-7 PM	4858	0.0	1500	1500	3358	15.74+	400	57.7	10.6	31.7	
7-8 PM	3260	0.0	1500	1500	1760	16.22+	400	66.7	10.6	31.7	
8-9 PM	2244	0.0	1499	1465	778	16.19+	396	67.9	10.6	31.2	
9-10 PM	2340	0.0	1500	1500	840	16.33+	400	67.8	10.6	30.8	
10-11 PM	1994	0.0	1500	1462	533	16.20+	396	68.2	10.6	30.8	
11PM-MID	1450	0.0	1499	1369	81	15.37+	375	68.9	11.1	30.8	

+ INDICATES QUEUEING EXCEEDS USER-SPECIFIED MAXIMUM LIMIT

----- SITE BREAKDOWN DELAYS -----	
BREAKDOWN DURATION (MINS)	0
RANGE OF QUEUE DELAY - MIN	0.0
(VEH-H) MAX	0.0
AV BREAKDOWNS PER DAY	0.00
AV QUEUE DELAY/DAY (VEH-H)	0.0
AV TOTAL DELAY/DAY (VEH-H)	0.0

----- SITE ACCIDENT DELAYS -----	
BREAKDOWN DURATION (MINS)	0
RANGE OF QUEUE DELAY - MIN	0
(VEH-H) MAX	0
AV BREAKDOWNS PER DAY	0
AV QUEUE DELAY/DAY (VEH-H)	0
AV TOTAL DELAY/DAY (VEH-H)	0

AVERAGE ACCIDENT NUMBERS (PIA/DAY)	
MAIN ROUTE WITHOUT WORKS	0.0417
MAIN ROUTE WITH WORKS	0.0146
'DIVERSION'	0.0580
PIA: Personal Injury Accidents	
IMPACTS ON ROAD USERS	
ROAD USER COSTS PER DAY	\$259,285
CONGESTED HOURS PER DAY*	18

*Delays Exceeding User-Specified Maximum

**IH 94: USH 18 TO CTH O (WAUKESHA COUNTY)
CONTINUOUS (24 HOUR) 2 LANE CLOSURE
NO DIVERSION ROUTE (MAX QUEUE METHOD)**

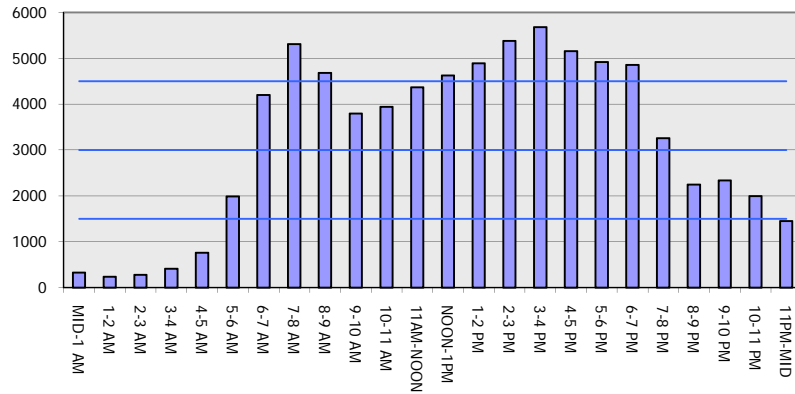
OCTOBER

Analyzed for 2009
Construction Season

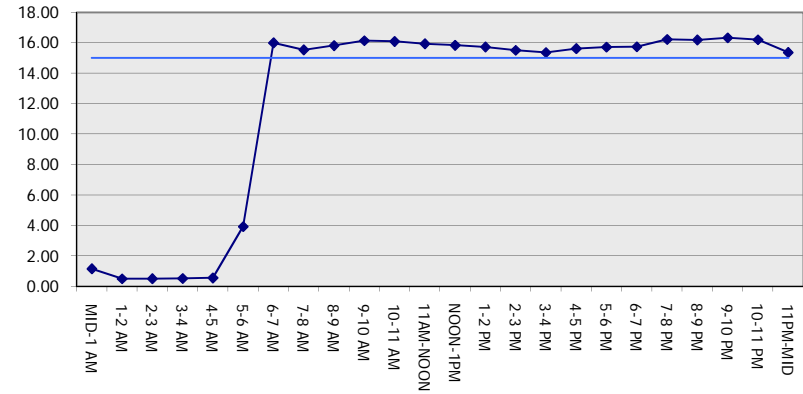
GRAPHICAL REPRESENTATION OF TRAFFIC MODEL INPUT AND OUTPUT

FRIDAY WESTBOUND DIRECTION

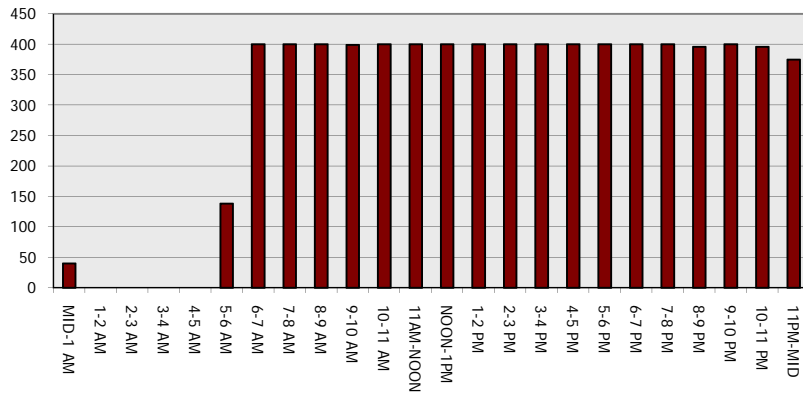
Main Route - Traffic Demand (Vehicles Per Hour)



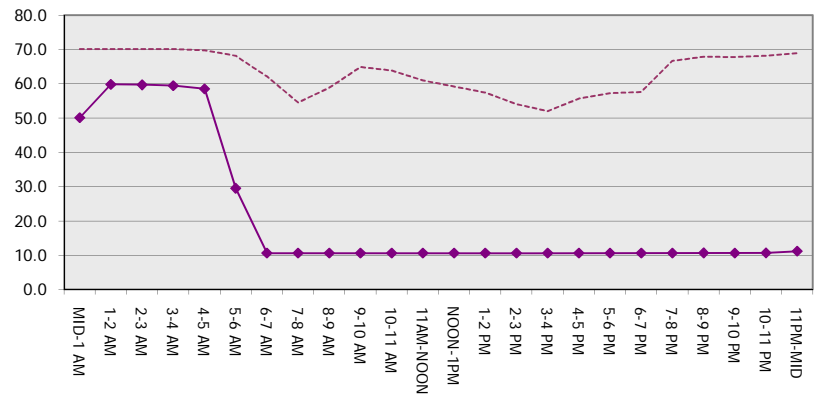
Main Route Average Delay Per Vehicle (Minutes)



Main Route - Average Queue Length (Vehicles)



Main Route - Average Speed (MPH)



IH 94: USH 18 TO CTH O (WAUKESHA COUNTY) CONTINUOUS (24 HOUR) 2 LANE CLOSURE NO DIVERSION ROUTE (MAX QUEUE METHOD)	OCTOBER
	Analyzed for 2009 Construction Season

SUMMARY OF TRAFFIC MODEL OUTPUT

FRIDAY EASTBOUND DIRECTION

TIME OF DAY	FLOWS AND CAPACITY IN VEH/HR							AVERAGE SPEEDS IN MPH			
	MAIN ROUTE		SITE CAPA CITY	FLOW		AV.DEL PER VEH (MINS)	AVERAGE QUEUE (VEH)	MAIN ROUTE		SITE	
	DEMAND FLOW	PCT HEAVY		MAIN ROUTE	'DIVER TED'			WITHOUT WORK ZONE	WITH WORK ZONE		
MID-1 AM	287	0.0	1500	287	0	1.32	53	70.2	48.3	44.0	
1-2 AM	205	0.0	1500	205	0	0.50	0	70.2	59.9	44.6	
2-3 AM	242	0.0	1500	242	0	0.50	0	70.2	59.8	44.5	
3-4 AM	369	0.0	1500	369	0	0.52	0	70.2	59.6	44.0	
4-5 AM	653	0.0	1500	653	0	0.55	0	69.9	58.8	42.9	
5-6 AM	2043	0.0	1499	2043	0	3.48	138	68.2	31.5	30.8	
6-7 AM	4894	0.0	1500	1500	3394	15.55+	400	57.4	10.7	35.1	
7-8 AM	5602	0.0	1500	1500	4102	15.22+	400	52.6	10.7	35.1	
8-9 AM	4732	0.0	1500	1500	3232	15.61+	399	58.5	10.7	35.1	
9-10 AM	4051	0.0	1500	1500	2551	15.87+	400	63.2	10.7	35.1	
10-11 AM	3747	0.0	1500	1500	2247	15.97+	400	65.3	10.7	35.1	
11AM-NOON	4076	0.0	1500	1500	2576	15.86+	399	63.0	10.7	35.1	
NOON-1PM	4304	0.0	1500	1500	2804	15.78+	400	61.5	10.7	35.1	
1-2 PM	4448	0.0	1500	1500	2948	15.73+	399	60.5	10.7	35.1	
2-3 PM	5135	0.0	1500	1500	3635	15.44+	400	55.8	10.7	35.1	
3-4 PM	5455	0.0	1500	1500	3955	15.29+	400	53.6	10.7	35.1	
4-5 PM	5237	0.0	1500	1500	3737	15.40+	400	55.1	10.7	35.1	
5-6 PM	5000	0.0	1500	1500	3500	15.50+	400	56.7	10.7	35.1	
6-7 PM	4361	0.0	1500	1500	2861	15.76+	400	61.0	10.7	35.1	
7-8 PM	3424	0.0	1500	1450	1974	15.90+	396	66.5	10.7	35.1	
8-9 PM	2610	0.0	1499	1487	1122	16.21+	398	67.5	10.6	31.8	
9-10 PM	2636	0.0	1499	1500	1136	16.30+	399	67.4	10.6	31.1	
10-11 PM	2231	0.0	1499	1455	775	16.17+	395	67.9	10.6	30.9	
11PM-MID	1594	0.0	1499	1398	196	15.93+	389	68.7	10.8	30.8	

+ INDICATES QUEUEING EXCEEDS USER-SPECIFIED MAXIMUM LIMIT

----- SITE BREAKDOWN DELAYS -----	
BREAKDOWN DURATION (MINS)	0
RANGE OF QUEUE DELAY - MIN (VEH-H) MAX	0.0
AV BREAKDOWNS PER DAY	0.00
AV QUEUE DELAY/DAY (VEH-H)	0.0
AV TOTAL DELAY/DAY (VEH-H)	0.0

----- SITE ACCIDENT DELAYS -----	
BREAKDOWN DURATION (MINS)	0
RANGE OF QUEUE DELAY - MIN (VEH-H) MAX	0
AV BREAKDOWNS PER DAY	0
AV QUEUE DELAY/DAY (VEH-H)	0
AV TOTAL DELAY/DAY (VEH-H)	0

AVERAGE ACCIDENT NUMBERS (PIA/DAY)	
MAIN ROUTE WITHOUT WORKS	0.0418
MAIN ROUTE WITH WORKS	0.0145
'DIVERSION'	0.0586

PIA: Personal Injury Accidents

ECONOMIC IMPACT ON ROAD USERS	
ROAD USER COSTS PER DAY	\$258,532
CONGESTED HOURS PER DAY*	18

*Delays Exceeding User-Specified Maximum

**IH 94: USH 18 TO CTH O (WAUKESHA COUNTY)
CONTINUOUS (24 HOUR) 2 LANE CLOSURE
NO DIVERSION ROUTE (MAX QUEUE METHOD)**

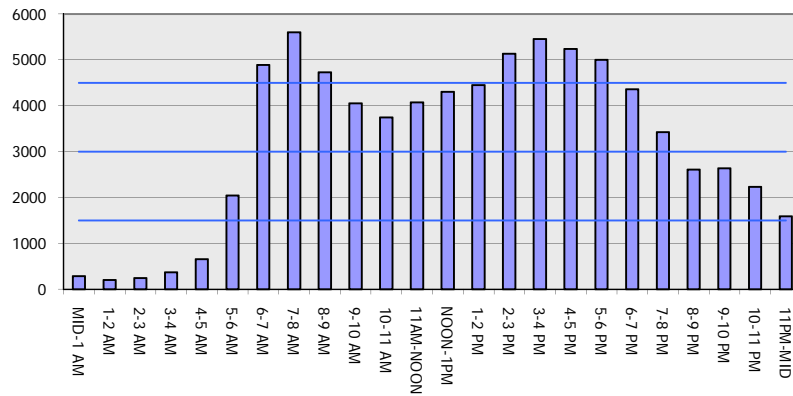
OCTOBER

Analyzed for 2009
Construction Season

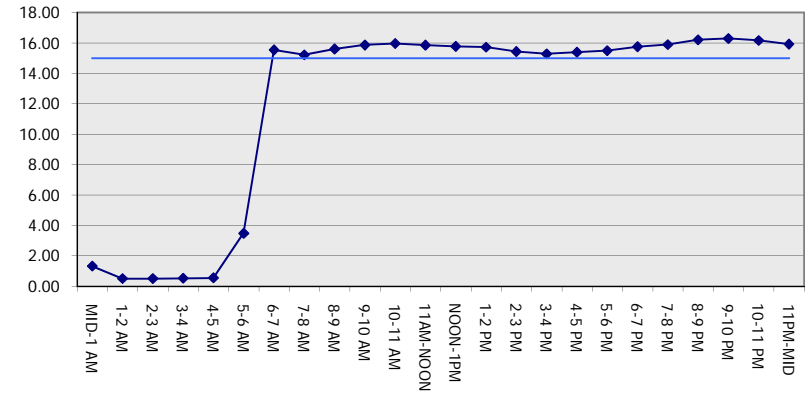
GRAPHICAL REPRESENTATION OF TRAFFIC MODEL INPUT AND OUTPUT

FRIDAY EASTBOUND DIRECTION

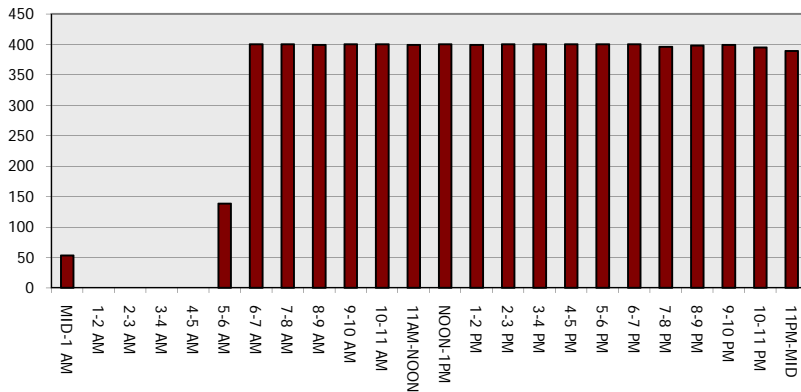
Main Route - Traffic Demand (Vehicles Per Hour)



Main Route Average Delay Per Vehicle (Minutes)



Main Route - Average Queue Length (Vehicles)



Main Route - Average Speed (MPH)

