

IH 94: USH 18 TO CTH O (WAUKESHA COUNTY) CONTINUOUS (24 HOUR) CLOSURE NO DIVERSION ROUTE (MAX QUEUE METHOD)	AUGUST
	Analyzed for 2009 Construction Season

SUMMARY OF TRAFFIC MODEL OUTPUT

MON-THUR WESTBOUND DIRECTION

TIME OF DAY	FLOWS AND CAPACITY IN VEH/HR						AVERAGE SPEEDS IN MPH			
	MAIN ROUTE		SITE CAPA CITY	FLOW		AV.DEL PER VEH (MINS)	AVERAGE QUEUE (VEH)	MAIN ROUTE		SITE
	DEMAND FLOW	PCT HEAVY		MAIN ROUTE	'DIVER TED'			WITHOUT WORK ZONE	WITH WORK ZONE	
MID-1 AM	560	0.0	3000	560	0	0.36	0	70.0	62.3	49.7
1-2 AM	331	0.0	3000	331	0	0.36	0	70.2	62.5	49.7
2-3 AM	287	0.0	3000	287	0	0.36	0	70.2	62.5	49.7
3-4 AM	370	0.0	3000	370	0	0.36	0	70.2	62.5	49.7
4-5 AM	761	0.0	3000	761	0	0.35	0	69.8	62.2	49.7
5-6 AM	1970	0.0	2999	1970	0	0.34	0	68.3	61.4	49.7
6-7 AM	3792	0.0	2999	3792	0	4.89	313	65.0	25.4	37.3
7-8 AM	4616	0.0	2999	3054	1562	15.82+	857	59.3	12.0	37.3
8-9 AM	4442	0.0	3000	3004	1437	15.86+	854	60.5	12.0	37.3
9-10 AM	3425	0.0	3000	2997	428	15.89+	837	66.5	12.2	37.3
10-11 AM	3188	0.0	2999	2998	191	15.89+	836	66.8	12.2	37.3
11AM-NOON	3601	0.0	2999	2998	602	15.89+	837	66.3	12.2	37.3
NOON-1PM	3757	0.0	3000	2999	758	15.85+	838	65.2	12.2	37.3
1-2 PM	3903	0.0	2999	2999	904	15.80+	839	64.2	12.2	37.3
2-3 PM	4186	0.0	2999	3004	1182	15.76+	843	62.3	12.1	37.3
3-4 PM	4504	0.0	2999	3014	1489	15.88+	857	60.1	12.0	37.3
4-5 PM	4683	0.0	2999	3000	1682	15.92+	864	58.9	12.0	37.3
5-6 PM	4609	0.0	3000	3001	1609	15.92+	862	59.4	12.0	37.3
6-7 PM	4287	0.0	3000	2988	1299	15.83+	849	61.5	12.1	37.3
7-8 PM	3079	0.0	3000	2928	151	15.68+	824	66.9	12.2	37.3
8-9 PM	2522	0.0	2999	2522	0	10.58	565	67.6	15.4	37.8
9-10 PM	2191	0.0	3000	2191	0	1.05	60	68.0	50.3	48.4
10-11 PM	1920	0.0	3000	1920	0	0.34	0	68.4	61.4	49.7
11PM-MID	1233	0.0	3000	1233	0	0.35	0	69.2	61.9	49.7

+ INDICATES QUEUEING EXCEEDS USER-SPECIFIED MAXIMUM LIMIT

BREAKDOWN DURATION (MINS)	0
RANGE OF QUEUE DELAY - MIN (VEH-H) MAX	0.0
AV BREAKDOWNS PER DAY	0.00
AV QUEUE DELAY/DAY (VEH-H)	0.0
AV TOTAL DELAY/DAY (VEH-H)	0.0

BREAKDOWN DURATION (MINS)	0
RANGE OF QUEUE DELAY - MIN (VEH-H) MAX	0
AV BREAKDOWNS PER DAY	0
AV QUEUE DELAY/DAY (VEH-H)	0
AV TOTAL DELAY/DAY (VEH-H)	0

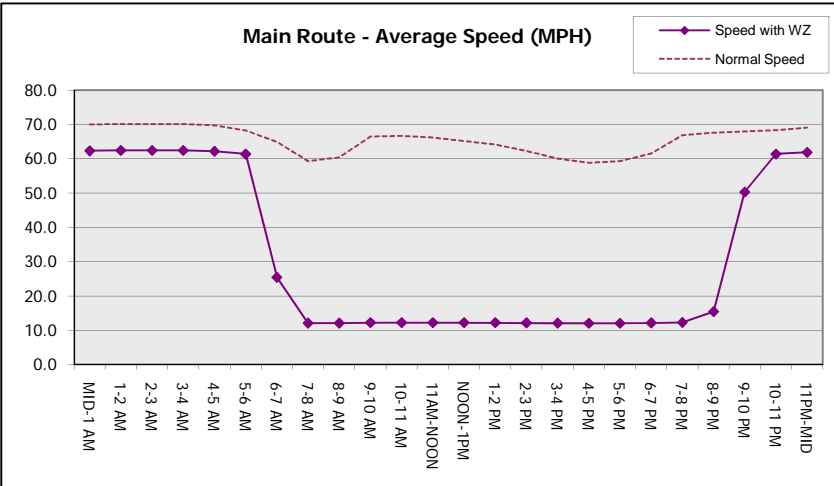
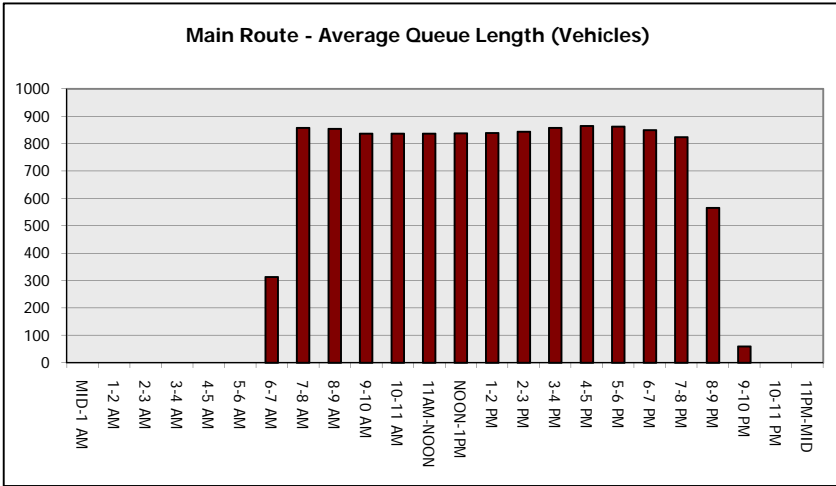
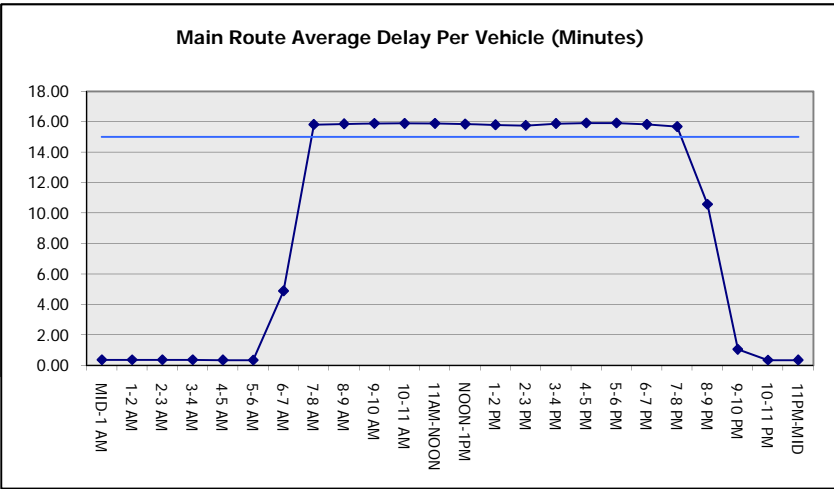
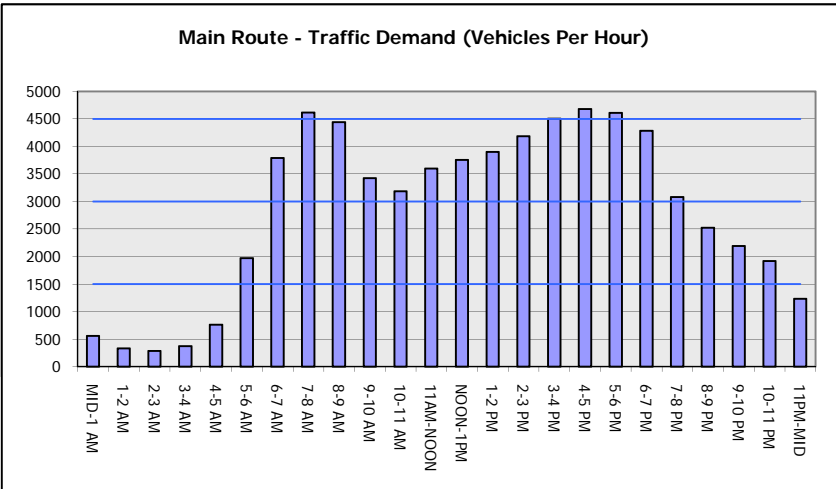
MAIN ROUTE WITHOUT WORKS	0.0369
MAIN ROUTE WITH WORKS	0.0261
'DIVERSION'	0.0167
PIA: Personal Injury Accidents	
IMPACTS ON ROAD USERS	
ROAD USER COSTS PER DAY	\$194,003
CONGESTED HOURS PER DAY*	13

*Delays Exceeding User-Specified Maximum

**IH 94: USH 18 TO CTH O (WAUKESHA COUNTY)
CONTINUOUS (24 HOUR) CLOSURE
NO DIVERSION ROUTE (MAX QUEUE METHOD)**

AUGUST
Analyzed for 2009
Construction Season

GRAPHICAL REPRESENTATION OF TRAFFIC MODEL INPUT AND OUTPUT
MON-THUR WESTBOUND DIRECTION



IH 94: USH 18 TO CTH O (WAUKESHA COUNTY) CONTINUOUS (24 HOUR) CLOSURE NO DIVERSION ROUTE (MAX QUEUE METHOD)	AUGUST
	Analyzed for 2009 Construction Season

SUMMARY OF TRAFFIC MODEL OUTPUT

MON-THUR EASTBOUND DIRECTION

TIME OF DAY	FLOWS AND CAPACITY IN VEH/HR							AVERAGE SPEEDS IN MPH		
	MAIN ROUTE		SITE CAPA CITY	FLOW		AV.DEL PER VEH (MINS)	AVERAGE QUEUE (VEH)	MAIN ROUTE		SITE
	DEMAND FLOW	PCT HEAVY		MAIN ROUTE	'DIVER TED'			WITHOUT WORK ZONE	WITH WORK ZONE	
MID-1 AM	508	0.0	3000	508	0	0.36	0	70.1	62.4	49.7
1-2 AM	319	0.0	3000	319	0	0.36	0	70.2	62.5	49.7
2-3 AM	274	0.0	3000	274	0	0.36	0	70.2	62.5	49.7
3-4 AM	329	0.0	3000	329	0	0.36	0	70.2	62.5	49.7
4-5 AM	646	0.0	3000	646	0	0.36	0	69.9	62.3	49.7
5-6 AM	1966	0.0	2999	1966	0	0.35	0	68.3	61.1	49.0
6-7 AM	4424	0.0	2999	3889	535	8.43+	531	60.6	18.1	37.3
7-8 AM	4966	0.0	3000	3000	1966	15.78+	864	56.9	12.0	37.3
8-9 AM	4814	0.0	3000	2987	1827	15.83+	863	57.9	12.0	37.3
9-10 AM	3922	0.0	3000	2980	942	15.83+	841	64.1	12.1	37.3
10-11 AM	3551	0.0	3000	2996	556	15.90+	837	66.3	12.2	37.3
11AM-NOON	3896	0.0	2999	2997	899	15.80+	839	64.2	12.2	37.3
NOON-1PM	3940	0.0	3000	2998	942	15.79+	839	64.0	12.2	37.3
1-2 PM	4033	0.0	3000	2997	1036	15.76+	839	63.3	12.1	37.3
2-3 PM	4352	0.0	2999	3009	1343	15.82+	850	61.1	12.0	37.3
3-4 PM	4553	0.0	3000	3009	1544	15.91+	860	59.7	12.0	37.3
4-5 PM	4707	0.0	3000	3000	1706	15.91+	864	58.7	12.0	37.3
5-6 PM	4429	0.0	3000	2989	1440	15.87+	855	60.6	12.0	37.3
6-7 PM	3695	0.0	3000	2997	698	15.87+	838	65.6	12.2	37.3
7-8 PM	2783	0.0	2999	2781	3	14.70+	771	67.3	12.6	37.3
8-9 PM	2596	0.0	3000	2596	0	8.42	443	67.5	17.9	37.7
9-10 PM	2242	0.0	3000	2242	0	0.85	40	67.9	52.9	48.2
10-11 PM	1582	0.0	3000	1582	0	0.34	0	68.7	61.7	49.7
11PM-MID	1086	0.0	3000	1086	0	0.35	0	69.4	62.0	49.7

+ INDICATES QUEUEING EXCEEDS USER-SPECIFIED MAXIMUM LIMIT

----- SITE BREAKDOWN DELAYS -----	
BREAKDOWN DURATION (MINS)	0
RANGE OF QUEUE DELAY - MIN (VEH-H) MAX	0.0
AV BREAKDOWNS PER DAY	0.00
AV QUEUE DELAY/DAY (VEH-H)	0.0
AV TOTAL DELAY/DAY (VEH-H)	0.0

----- SITE ACCIDENT DELAYS -----	
BREAKDOWN DURATION (MINS)	0
RANGE OF QUEUE DELAY - MIN (VEH-H) MAX	0
AV BREAKDOWNS PER DAY	0
AV QUEUE DELAY/DAY (VEH-H)	0
AV TOTAL DELAY/DAY (VEH-H)	0

AVERAGE ACCIDENT NUMBERS (PIA/DAY)	
MAIN ROUTE WITHOUT WORKS	0.0377
MAIN ROUTE WITH WORKS	0.0257
'DIVERSION'	0.0193

PIA: Personal Injury Accidents

ECONOMIC IMPACT ON ROAD USERS	
ROAD USER COSTS PER DAY	\$200,894
CONGESTED HOURS PER DAY*	14

*Delays Exceeding User-Specified Maximum

**IH 94: USH 18 TO CTH O (WAUKESHA COUNTY)
CONTINUOUS (24 HOUR) CLOSURE
NO DIVERSION ROUTE (MAX QUEUE METHOD)**

AUGUST

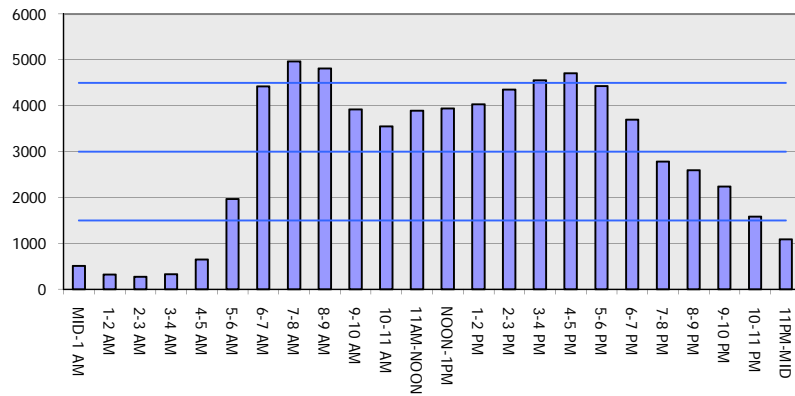
Analyzed for 2009
Construction Season

GRAPHICAL REPRESENTATION OF TRAFFIC MODEL INPUT AND OUTPUT

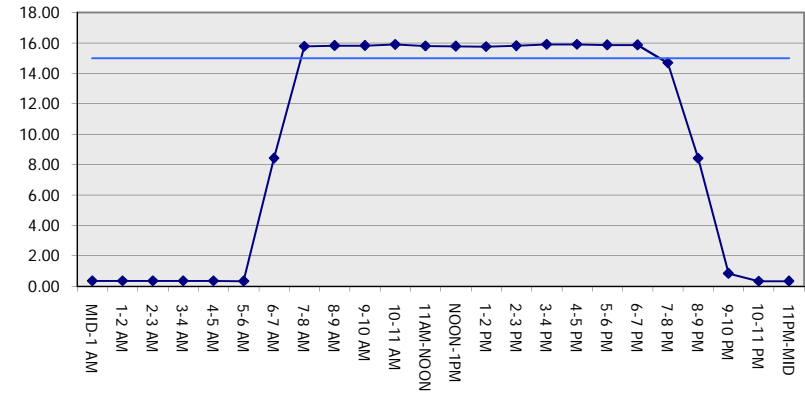
MON-THUR

EASTBOUND DIRECTION

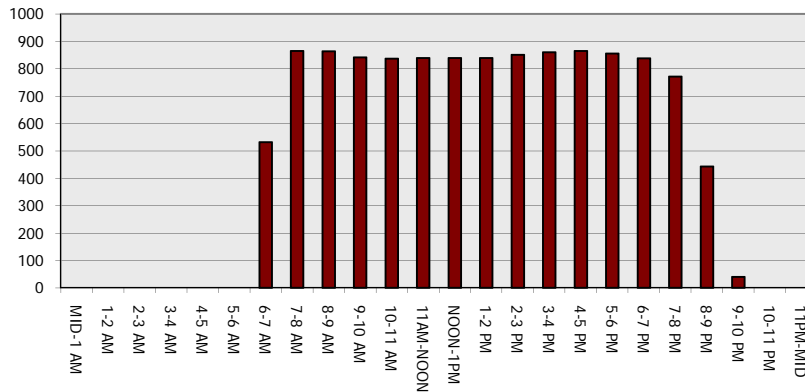
Main Route - Traffic Demand (Vehicles Per Hour)



Main Route Average Delay Per Vehicle (Minutes)



Main Route - Average Queue Length (Vehicles)



Main Route - Average Speed (MPH)

