

IH 94: CTH G TO STH 16 (WAUKESHA COUNTY) CONTINUOUS (24 HOUR) CLOSURE NO DIVERSION ROUTE (MAX QUEUE METHOD)	OCTOBER
	Analyzed for 2009 Construction Season

SUMMARY OF TRAFFIC MODEL OUTPUT

MON-THUR WESTBOUND DIRECTION

TIME OF DAY	FLOWS AND CAPACITY IN VEH/HR						AVERAGE SPEEDS IN MPH			
	MAIN ROUTE		SITE CAPA CITY	FLOW		AV.DEL PER VEH (MINS)	AVERAGE QUEUE (VEH)	MAIN ROUTE		SITE
	DEMAND FLOW	PCT HEAVY		MAIN ROUTE	'DIVER TED'			WITHOUT WORK ZONE	WITH WORK ZONE	
MID-1 AM	266	0.0	3000	266	0	0.36	0	70.2	63.3	49.7
1-2 AM	183	0.0	3000	183	0	0.36	0	70.2	63.3	49.7
2-3 AM	150	0.0	3000	150	0	0.36	0	70.2	63.3	49.7
3-4 AM	208	0.0	3000	208	0	0.36	0	70.2	63.3	49.7
4-5 AM	354	0.0	3000	354	0	0.36	0	70.2	63.3	49.7
5-6 AM	773	0.0	3000	773	0	0.35	0	69.8	63.1	49.7
6-7 AM	1737	0.0	3000	1737	0	0.34	0	68.6	62.3	49.7
7-8 AM	2330	0.0	3000	2330	0	0.33	0	67.8	61.9	49.7
8-9 AM	2259	0.0	3000	2259	0	0.33	0	67.9	62.0	49.7
9-10 AM	1866	0.0	3000	1866	0	0.34	0	68.4	62.3	49.7
10-11 AM	1818	0.0	3000	1818	0	0.34	0	68.5	62.3	49.7
11AM-NOON	1959	0.0	3000	1959	0	0.34	0	68.3	62.2	49.7
NOON-1PM	2134	0.0	3000	2134	0	0.33	0	68.1	62.1	49.7
1-2 PM	2168	0.0	3000	2168	0	0.33	0	68.1	62.0	49.7
2-3 PM	2630	0.0	2999	2630	0	0.48	0	67.4	59.2	44.1
3-4 PM	3319	0.0	2999	3319	0	2.57	120	66.6	38.5	37.3
4-5 PM	3870	0.0	3000	3431	439	12.29+	673	64.4	15.1	37.3
5-6 PM	3718	0.0	3000	3017	701	15.51+	819	65.5	12.9	37.3
6-7 PM	2408	0.0	3000	2408	0	9.62	540	67.8	17.9	40.5
7-8 PM	1526	0.0	3000	1526	0	0.49	11	68.8	60.2	49.7
8-9 PM	1194	0.0	3000	1194	0	0.35	0	69.2	62.8	49.7
9-10 PM	1034	0.0	3000	1034	0	0.35	0	69.4	62.9	49.7
10-11 PM	740	0.0	3000	740	0	0.35	0	69.8	63.2	49.7
11PM-MID	496	0.0	3000	496	0	0.36	0	70.1	63.3	49.7

+ INDICATES QUEUEING EXCEEDS USER-SPECIFIED MAXIMUM LIMIT

----- SITE BREAKDOWN DELAYS -----	
BREAKDOWN DURATION (MINS)	0
RANGE OF QUEUE DELAY - MIN (VEH-H) MAX	0.0
AV BREAKDOWNS PER DAY	0.00
AV QUEUE DELAY/DAY (VEH-H)	0.0
AV TOTAL DELAY/DAY (VEH-H)	0.0

----- SITE ACCIDENT DELAYS -----	
BREAKDOWN DURATION (MINS)	0
RANGE OF QUEUE DELAY - MIN (VEH-H) MAX	0
AV BREAKDOWNS PER DAY	0
AV QUEUE DELAY/DAY (VEH-H)	0
AV TOTAL DELAY/DAY (VEH-H)	0

AVERAGE ACCIDENT NUMBERS (PIA/DAY)	
MAIN ROUTE WITHOUT WORKS	0.0243
MAIN ROUTE WITH WORKS	0.0211
'DIVERSION'	0.0016
<small>PIA: Personal Injury Accidents</small>	
IMPACTS ON ROAD USERS	
ROAD USER COSTS PER DAY	\$31,752
CONGESTED HOURS PER DAY*	2

*Delays Exceeding User-Specified Maximum

**IH 94: CTH G TO STH 16 (WAUKESHA COUNTY)
CONTINUOUS (24 HOUR) CLOSURE
NO DIVERSION ROUTE (MAX QUEUE METHOD)**

OCTOBER

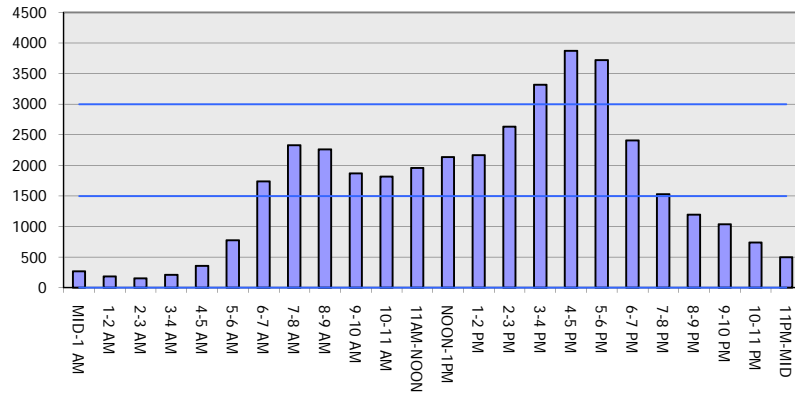
Analyzed for 2009
Construction Season

GRAPHICAL REPRESENTATION OF TRAFFIC MODEL INPUT AND OUTPUT

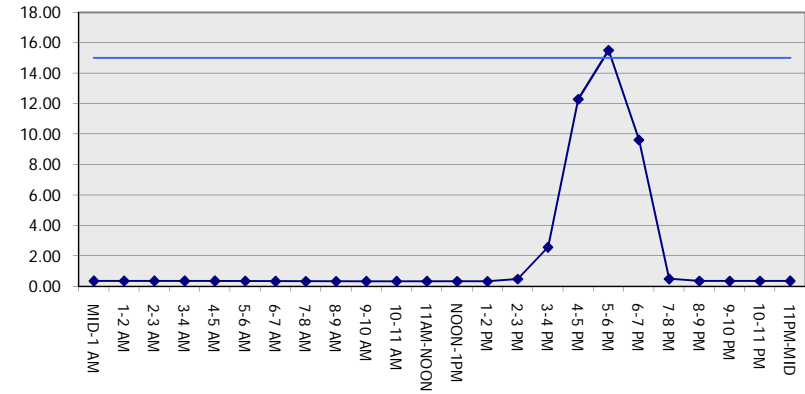
MON-THUR

WESTBOUND DIRECTION

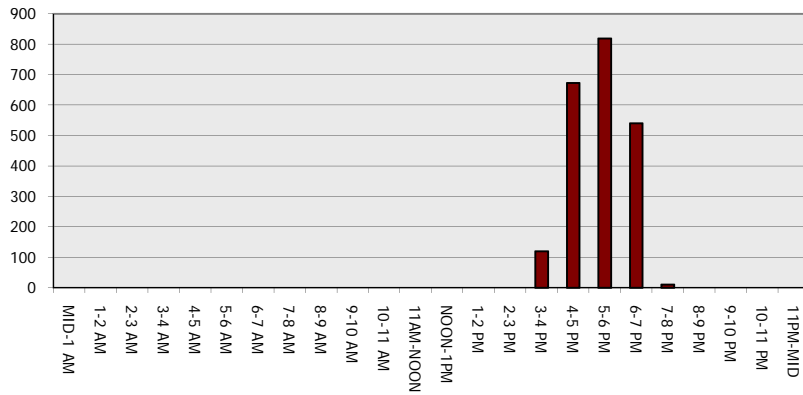
Main Route - Traffic Demand (Vehicles Per Hour)



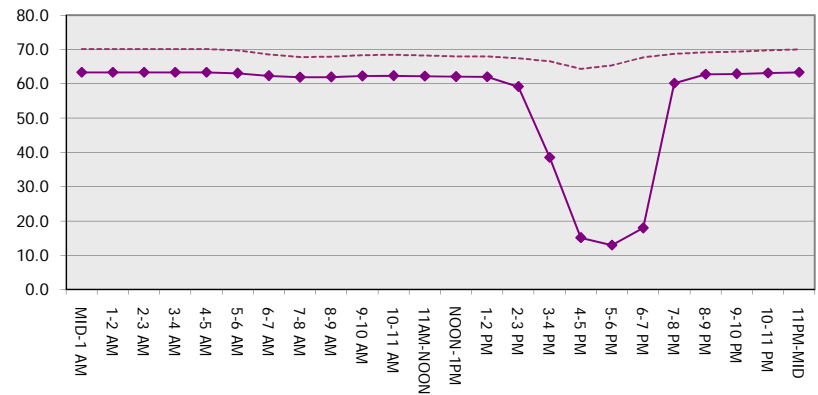
Main Route Average Delay Per Vehicle (Minutes)



Main Route - Average Queue Length (Vehicles)



Main Route - Average Speed (MPH)



IH 94: CTH G TO STH 16 (WAUKESHA COUNTY) CONTINUOUS (24 HOUR) CLOSURE NO DIVERSION ROUTE (MAX QUEUE METHOD)	OCTOBER
	Analyzed for 2009 Construction Season

SUMMARY OF TRAFFIC MODEL OUTPUT

MON-THUR EASTBOUND DIRECTION

TIME OF DAY	FLOWS AND CAPACITY IN VEH/HR							AVERAGE SPEEDS IN MPH		
	MAIN ROUTE		SITE CAPA CITY	FLOW		AV.DEL PER VEH (MINS)	AVERAGE QUEUE (VEH)	MAIN ROUTE		SITE
	DEMAND FLOW	PCT HEAVY		MAIN ROUTE	'DIVER TED'			WITHOUT WORK ZONE	WITH WORK ZONE	
MID-1 AM	194	0.0	3000	194	0	0.36	0	70.2	63.3	49.7
1-2 AM	167	0.0	3000	167	0	0.36	0	70.2	63.3	49.7
2-3 AM	163	0.0	3000	163	0	0.36	0	70.2	63.3	49.7
3-4 AM	187	0.0	3000	187	0	0.36	0	70.2	63.3	49.7
4-5 AM	501	0.0	3000	501	0	0.36	0	70.1	63.3	49.7
5-6 AM	1380	0.0	3000	1380	0	0.34	0	69.0	62.7	49.7
6-7 AM	2946	0.0	2999	2946	0	1.09	33	67.1	51.1	40.7
7-8 AM	3978	0.0	3000	3681	297	10.00+	576	63.7	17.4	37.3
8-9 AM	3055	0.0	3000	2917	138	15.16+	795	66.9	13.1	37.3
9-10 AM	2210	0.0	2999	2210	0	5.48	375	68.0	26.3	43.4
10-11 AM	1911	0.0	3000	1911	0	0.34	0	68.4	62.2	49.7
11AM-NOON	1933	0.0	3000	1933	0	0.34	0	68.3	62.2	49.7
NOON-1PM	1983	0.0	3000	1983	0	0.33	0	68.2	62.2	49.7
1-2 PM	2072	0.0	3000	2072	0	0.33	0	68.2	62.1	49.7
2-3 PM	2212	0.0	3000	2212	0	0.33	0	68.0	62.0	49.7
3-4 PM	2407	0.0	3000	2407	0	0.34	0	67.8	61.7	49.2
4-5 PM	2611	0.0	3000	2611	0	0.47	0	67.5	59.4	44.3
5-6 PM	2650	0.0	3000	2650	0	0.50	0	67.4	58.9	43.5
6-7 PM	1818	0.0	3000	1818	0	0.34	0	68.5	62.3	49.7
7-8 PM	1128	0.0	3000	1128	0	0.35	0	69.3	62.8	49.7
8-9 PM	973	0.0	3000	973	0	0.35	0	69.6	63.0	49.7
9-10 PM	856	0.0	3000	856	0	0.35	0	69.7	63.0	49.7
10-11 PM	653	0.0	3000	653	0	0.36	0	69.9	63.2	49.7
11PM-MID	399	0.0	3000	399	0	0.36	0	70.2	63.3	49.7

+ INDICATES QUEUEING EXCEEDS USER-SPECIFIED MAXIMUM LIMIT

----- SITE BREAKDOWN DELAYS -----	
BREAKDOWN DURATION (MINS)	0
RANGE OF QUEUE DELAY - MIN (VEH-H) MAX	0.0
AV BREAKDOWNS PER DAY	0.00
AV QUEUE DELAY/DAY (VEH-H)	0.0
AV TOTAL DELAY/DAY (VEH-H)	0.0

----- SITE ACCIDENT DELAYS -----	
BREAKDOWN DURATION (MINS)	0
RANGE OF QUEUE DELAY - MIN (VEH-H) MAX	0
AV BREAKDOWNS PER DAY	0
AV QUEUE DELAY/DAY (VEH-H)	0
AV TOTAL DELAY/DAY (VEH-H)	0

AVERAGE ACCIDENT NUMBERS (PIA/DAY)	
MAIN ROUTE WITHOUT WORKS	0.0238
MAIN ROUTE WITH WORKS	0.0211
'DIVERSION'	0.0006

PIA: Personal Injury Accidents

ECONOMIC IMPACT ON ROAD USERS	
ROAD USER COSTS PER DAY	\$24,115
CONGESTED HOURS PER DAY*	2

*Delays Exceeding User-Specified Maximum

**IH 94: CTH G TO STH 16 (WAUKESHA COUNTY)
CONTINUOUS (24 HOUR) CLOSURE
NO DIVERSION ROUTE (MAX QUEUE METHOD)**

OCTOBER

Analyzed for 2009
Construction Season

GRAPHICAL REPRESENTATION OF TRAFFIC MODEL INPUT AND OUTPUT

MON-THUR EASTBOUND DIRECTION

