

IH 94: CTH G TO STH 16 (WAUKESHA COUNTY) CONTINUOUS (24 HOUR) 2 LANE CLOSURE NO DIVERSION ROUTE (MAX QUEUE METHOD)	OCTOBER
	Analyzed for 2009 Construction Season

SUMMARY OF TRAFFIC MODEL OUTPUT

FRIDAY WESTBOUND DIRECTION

TIME OF DAY	FLOWS AND CAPACITY IN VEH/HR							AVERAGE SPEEDS IN MPH			
	MAIN ROUTE		SITE CAPA CITY	FLOW		AV.DEL PER VEH (MINS)	AVERAGE QUEUE (VEH)	MAIN ROUTE		SITE	
	DEMAND FLOW	PCT HEAVY		MAIN ROUTE	'DIVER TED'			WITHOUT WORK ZONE	WITH WORK ZONE		
MID-1 AM	303	0.0	1500	303	0	0.51	0	70.2	60.9	44.3	
1-2 AM	233	0.0	1500	233	0	0.50	0	70.2	61.0	44.5	
2-3 AM	204	0.0	1500	204	0	0.50	0	70.2	61.0	44.6	
3-4 AM	210	0.0	1500	210	0	0.50	0	70.2	61.0	44.6	
4-5 AM	365	0.0	1500	365	0	0.52	0	70.2	60.7	44.0	
5-6 AM	770	0.0	1500	770	0	0.56	0	69.8	59.7	42.5	
6-7 AM	1716	0.0	1499	1716	0	2.77	60	68.6	37.8	30.8	
7-8 AM	2284	0.0	1500	1756	528	15.35+	380	67.9	12.4	31.0	
8-9 AM	2329	0.0	1499	1500	829	16.33+	399	67.8	11.9	30.8	
9-10 AM	2101	0.0	1499	1467	635	16.22+	396	68.1	11.9	30.8	
10-11 AM	2340	0.0	1500	1500	840	16.32+	400	67.8	11.9	30.8	
11AM-NOON	2538	0.0	1500	1500	1038	16.31+	400	67.6	11.9	30.8	
NOON-1PM	2812	0.0	1500	1500	1312	16.29+	400	67.3	11.9	30.8	
1-2 PM	3026	0.0	1500	1500	1526	16.28+	400	66.9	11.9	30.8	
2-3 PM	3507	0.0	1500	1500	2007	16.25+	400	66.4	11.9	30.8	
3-4 PM	4208	0.0	1500	1500	2708	16.01+	400	62.1	11.9	30.8	
4-5 PM	4019	0.0	1500	1500	2519	16.08+	400	63.4	11.9	30.8	
5-6 PM	4033	0.0	1500	1500	2533	16.08+	400	63.3	11.9	30.8	
6-7 PM	3205	0.0	1500	1500	1705	16.27+	400	66.8	11.9	30.8	
7-8 PM	2453	0.0	1500	1500	953	16.32+	400	67.7	11.9	30.8	
8-9 PM	1574	0.0	1499	1435	138	16.02+	391	68.8	12.0	30.8	
9-10 PM	1385	0.0	1500	1385	0	13.69	332	69.0	13.7	30.8	
10-11 PM	1096	0.0	1499	1096	0	3.06	100	69.4	36.3	37.2	
11PM-MID	702	0.0	1500	702	0	0.55	0	69.9	59.9	42.7	

+ INDICATES QUEUEING EXCEEDS USER-SPECIFIED MAXIMUM LIMIT

----- SITE BREAKDOWN DELAYS -----	
BREAKDOWN DURATION (MINS)	0
RANGE OF QUEUE DELAY - MIN (VEH-H) MAX	0.0
AV BREAKDOWNS PER DAY	0.00
AV QUEUE DELAY/DAY (VEH-H)	0.0
AV TOTAL DELAY/DAY (VEH-H)	0.0

----- SITE ACCIDENT DELAYS -----	
BREAKDOWN DURATION (MINS)	0
RANGE OF QUEUE DELAY - MIN (VEH-H) MAX	0
AV BREAKDOWNS PER DAY	0
AV QUEUE DELAY/DAY (VEH-H)	0
AV TOTAL DELAY/DAY (VEH-H)	0

AVERAGE ACCIDENT NUMBERS (PIA/DAY)	
MAIN ROUTE WITHOUT WORKS	0.0294
MAIN ROUTE WITH WORKS	0.0156
'DIVERSION'	0.0277
PIA: Personal Injury Accidents	
IMPACTS ON ROAD USERS	
ROAD USER COSTS PER DAY	\$152,481
CONGESTED HOURS PER DAY*	14

*Delays Exceeding User-Specified Maximum

**IH 94: CTH G TO STH 16 (WAUKESHA COUNTY)
CONTINUOUS (24 HOUR) 2 LANE CLOSURE
NO DIVERSION ROUTE (MAX QUEUE METHOD)**

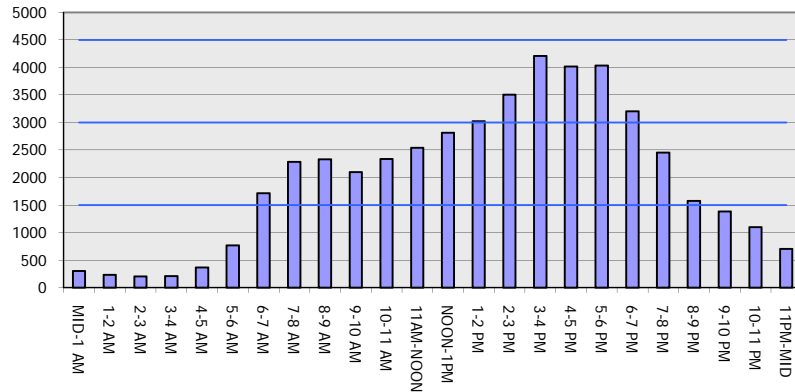
OCTOBER

Analyzed for 2009
Construction Season

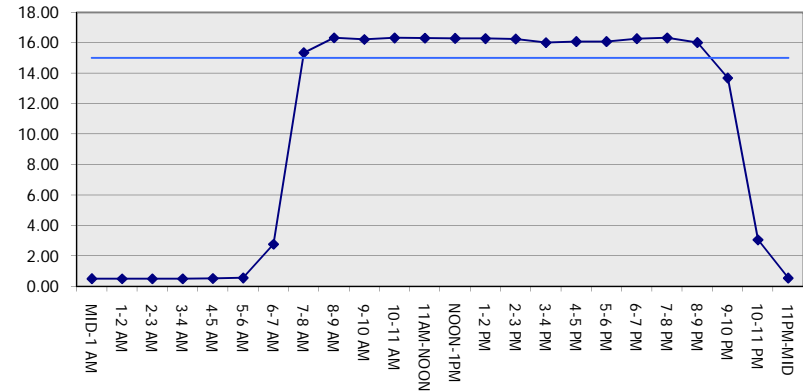
GRAPHICAL REPRESENTATION OF TRAFFIC MODEL INPUT AND OUTPUT

FRIDAY WESTBOUND DIRECTION

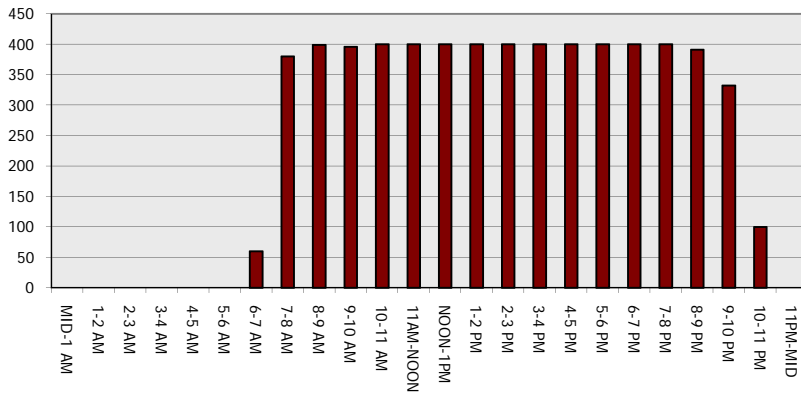
Main Route - Traffic Demand (Vehicles Per Hour)



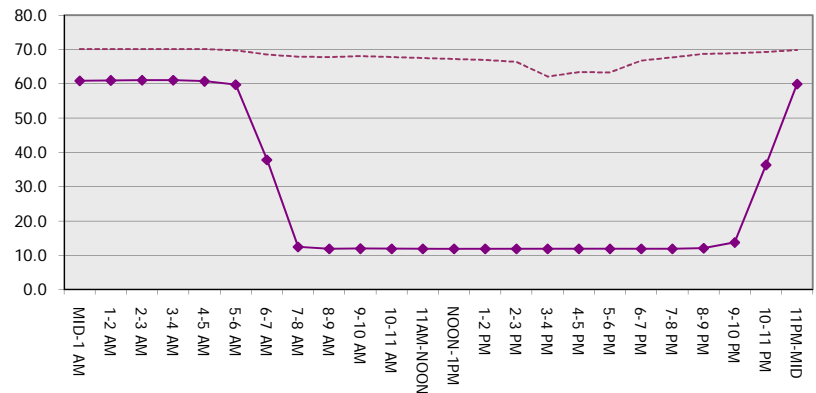
Main Route Average Delay Per Vehicle (Minutes)



Main Route - Average Queue Length (Vehicles)



Main Route - Average Speed (MPH)



IH 94: CTH G TO STH 16 (WAUKESHA COUNTY) CONTINUOUS (24 HOUR) 2 LANE CLOSURE NO DIVERSION ROUTE (MAX QUEUE METHOD)	OCTOBER
	Analyzed for 2009 Construction Season

SUMMARY OF TRAFFIC MODEL OUTPUT

FRIDAY EASTBOUND DIRECTION

TIME OF DAY	FLOWS AND CAPACITY IN VEH/HR							AVERAGE SPEEDS IN MPH		
	MAIN ROUTE		SITE CAPA CITY	FLOW		AV.DEL PER VEH (MINS)	AVERAGE QUEUE (VEH)	MAIN ROUTE		SITE
	DEMAND FLOW	PCT HEAVY		MAIN ROUTE	'DIVER TED'			WITHOUT WORK ZONE	WITH WORK ZONE	
MID-1 AM	211	0.0	1500	211	0	0.50	0	70.2	61.0	44.6
1-2 AM	183	0.0	1500	183	0	0.49	0	70.2	61.1	44.8
2-3 AM	192	0.0	1500	192	0	0.50	0	70.2	61.1	44.7
3-4 AM	178	0.0	1500	178	0	0.49	0	70.2	61.1	44.8
4-5 AM	428	0.0	1500	428	0	0.52	0	70.2	60.6	43.8
5-6 AM	1278	0.0	1499	1278	0	1.09	8	69.1	52.4	36.3
6-7 AM	2749	0.0	1500	1977	772	13.12+	336	67.3	14.1	31.9
7-8 AM	3645	0.0	1500	1500	2145	16.10+	400	66.0	11.9	32.9
8-9 AM	2884	0.0	1500	1470	1414	16.07+	397	67.1	12.0	32.9
9-10 AM	2110	0.0	1499	1467	643	16.21+	397	68.1	11.9	30.9
10-11 AM	2116	0.0	1500	1500	616	16.34+	400	68.1	11.9	30.8
11AM-NOON	2159	0.0	1500	1500	659	16.34+	400	68.1	11.9	30.8
NOON-1PM	2149	0.0	1500	1500	649	16.34+	400	68.1	11.9	30.8
1-2 PM	2404	0.0	1500	1500	904	16.32+	400	67.8	11.9	30.8
2-3 PM	2658	0.0	1500	1500	1158	16.30+	400	67.4	11.9	30.8
3-4 PM	2927	0.0	1500	1500	1427	16.29+	400	67.1	11.9	30.8
4-5 PM	3112	0.0	1500	1500	1612	16.27+	400	66.9	11.9	30.8
5-6 PM	3211	0.0	1500	1500	1711	16.27+	400	66.8	11.9	30.8
6-7 PM	2403	0.0	1500	1500	903	16.32+	400	67.8	11.9	30.8
7-8 PM	1607	0.0	1499	1440	168	16.10+	392	68.7	12.0	30.8
8-9 PM	1287	0.0	1499	1287	0	11.98	293	69.1	15.2	30.9
9-10 PM	1174	0.0	1499	1174	0	2.07	53	69.3	42.9	37.2
10-11 PM	920	0.0	1500	920	0	0.58	0	69.6	59.4	42.0
11PM-MID	678	0.0	1500	678	0	0.55	0	69.9	60.0	42.8

+ INDICATES QUEUEING EXCEEDS USER-SPECIFIED MAXIMUM LIMIT

----- SITE BREAKDOWN DELAYS -----	
BREAKDOWN DURATION (MINS)	0
RANGE OF QUEUE DELAY - MIN (VEH-H) MAX	0.0
AV BREAKDOWNS PER DAY	0.00
AV QUEUE DELAY/DAY (VEH-H)	0.0
AV TOTAL DELAY/DAY (VEH-H)	0.0

----- SITE ACCIDENT DELAYS -----	
BREAKDOWN DURATION (MINS)	0
RANGE OF QUEUE DELAY - MIN (VEH-H) MAX	0
AV BREAKDOWNS PER DAY	0
AV QUEUE DELAY/DAY (VEH-H)	0
AV TOTAL DELAY/DAY (VEH-H)	0

AVERAGE ACCIDENT NUMBERS (PIA/DAY)	
MAIN ROUTE WITHOUT WORKS	0.0265
MAIN ROUTE WITH WORKS	0.0155
'DIVERSION'	0.0213

PIA: Personal Injury Accidents

ECONOMIC IMPACT ON ROAD USERS	
ROAD USER COSTS PER DAY	\$134,051
CONGESTED HOURS PER DAY*	14

*Delays Exceeding User-Specified Maximum

**IH 94: CTH G TO STH 16 (WAUKESHA COUNTY)
 CONTINUOUS (24 HOUR) 2 LANE CLOSURE
 NO DIVERSION ROUTE (MAX QUEUE METHOD)**

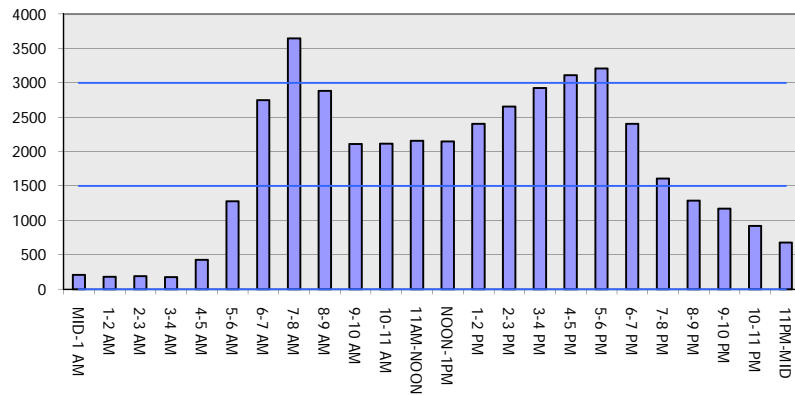
OCTOBER

Analyzed for 2009
 Construction Season

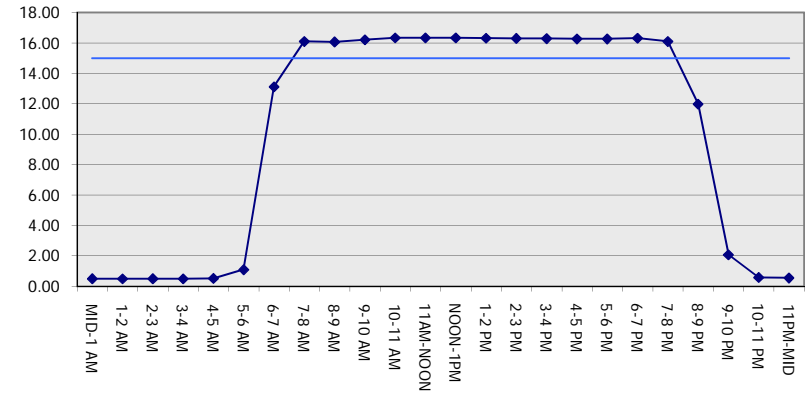
GRAPHICAL REPRESENTATION OF TRAFFIC MODEL INPUT AND OUTPUT

FRIDAY EASTBOUND DIRECTION

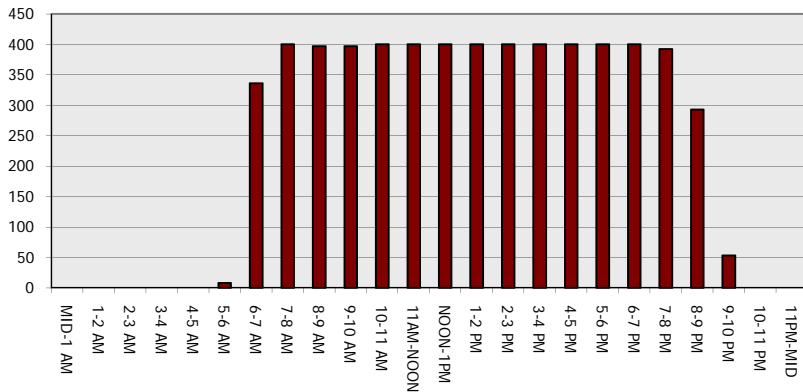
Main Route - Traffic Demand (Vehicles Per Hour)



Main Route Average Delay Per Vehicle (Minutes)



Main Route - Average Queue Length (Vehicles)



Main Route - Average Speed (MPH)

