

IH 94: CTH G TO STH 16 (WAUKESHA COUNTY) CONTINUOUS (24 HOUR) CLOSURE NO DIVERSION ROUTE (MAX QUEUE METHOD)	OCTOBER
	Analyzed for 2009 Construction Season

SUMMARY OF TRAFFIC MODEL OUTPUT

FRIDAY WESTBOUND DIRECTION

TIME OF DAY	FLOWS AND CAPACITY IN VEH/HR						AVERAGE SPEEDS IN MPH			
	MAIN ROUTE		SITE CAPA CITY	FLOW		AV.DEL PER VEH (MINS)	AVERAGE QUEUE (VEH)	MAIN ROUTE		SITE
	DEMAND FLOW	PCT HEAVY		MAIN ROUTE	'DIVER TED'			WITHOUT WORK ZONE	WITH WORK ZONE	
MID-1 AM	303	0.0	3000	303	0	0.36	0	70.2	63.3	49.7
1-2 AM	233	0.0	3000	233	0	0.36	0	70.2	63.3	49.7
2-3 AM	204	0.0	3000	204	0	0.36	0	70.2	63.3	49.7
3-4 AM	210	0.0	3000	210	0	0.36	0	70.2	63.3	49.7
4-5 AM	365	0.0	3000	365	0	0.36	0	70.2	63.3	49.7
5-6 AM	770	0.0	3000	770	0	0.35	0	69.8	63.1	49.7
6-7 AM	1716	0.0	3000	1716	0	0.34	0	68.6	62.4	49.7
7-8 AM	2284	0.0	3000	2284	0	0.33	0	67.9	62.0	49.7
8-9 AM	2329	0.0	3000	2329	0	0.33	0	67.8	61.9	49.7
9-10 AM	2101	0.0	3000	2101	0	0.33	0	68.1	62.1	49.7
10-11 AM	2340	0.0	3000	2340	0	0.33	0	67.8	61.9	49.7
11AM-NOON	2538	0.0	3000	2538	0	0.43	0	67.6	60.2	45.9
NOON-1PM	2812	0.0	2999	2812	0	0.61	0	67.3	57.3	40.4
1-2 PM	3026	0.0	2999	3026	0	0.95	14	66.9	52.7	37.7
2-3 PM	3507	0.0	3000	3507	0	5.03	272	66.4	27.3	37.3
3-4 PM	4208	0.0	2999	3279	929	14.78+	793	62.1	13.2	37.3
4-5 PM	4019	0.0	2999	2993	1026	15.38+	819	63.4	12.9	37.3
5-6 PM	4033	0.0	2999	2994	1039	15.38+	819	63.3	12.9	37.3
6-7 PM	3205	0.0	3000	2978	227	15.50+	814	66.8	12.9	37.3
7-8 PM	2453	0.0	2999	2453	0	10.69+	584	67.7	16.6	39.0
8-9 PM	1574	0.0	3000	1574	0	0.64	26	68.8	57.9	49.7
9-10 PM	1385	0.0	3000	1385	0	0.34	0	69.0	62.7	49.7
10-11 PM	1096	0.0	3000	1096	0	0.35	0	69.4	62.8	49.7
11PM-MID	702	0.0	3000	702	0	0.36	0	69.9	63.2	49.7

+ INDICATES QUEUEING EXCEEDS USER-SPECIFIED MAXIMUM LIMIT

----- SITE BREAKDOWN DELAYS -----	
BREAKDOWN DURATION (MINS)	0
RANGE OF QUEUE DELAY - MIN (VEH-H) MAX	0.0
AV BREAKDOWNS PER DAY	0.00
AV QUEUE DELAY/DAY (VEH-H)	0.0
AV TOTAL DELAY/DAY (VEH-H)	0.0

----- SITE ACCIDENT DELAYS -----	
BREAKDOWN DURATION (MINS)	0
RANGE OF QUEUE DELAY - MIN (VEH-H) MAX	0
AV BREAKDOWNS PER DAY	0
AV QUEUE DELAY/DAY (VEH-H)	0
AV TOTAL DELAY/DAY (VEH-H)	0

AVERAGE ACCIDENT NUMBERS (PIA/DAY)	
MAIN ROUTE WITHOUT WORKS	0.0294
MAIN ROUTE WITH WORKS	0.0245
'DIVERSION'	0.0046
PIA: Personal Injury Accidents	
IMPACTS ON ROAD USERS	
ROAD USER COSTS PER DAY	\$66,063
CONGESTED HOURS PER DAY*	5

*Delays Exceeding User-Specified Maximum

**IH 94: CTH G TO STH 16 (WAUKESHA COUNTY)
CONTINUOUS (24 HOUR) CLOSURE
NO DIVERSION ROUTE (MAX QUEUE METHOD)**

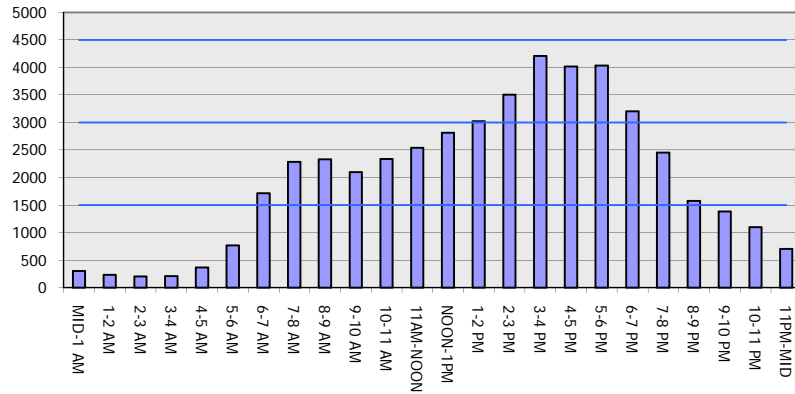
OCTOBER

Analyzed for 2009
Construction Season

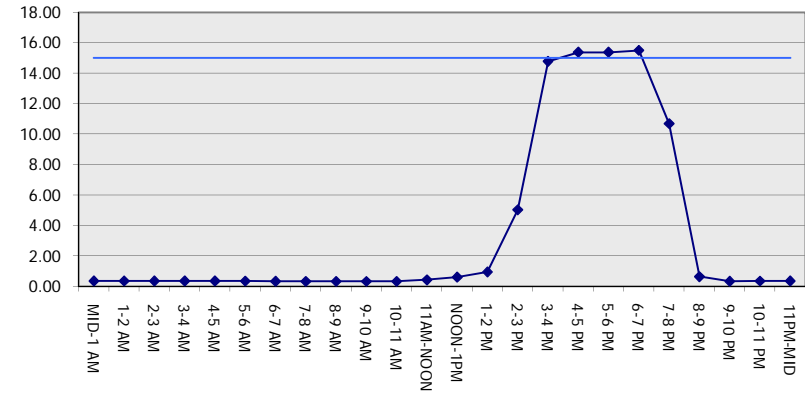
GRAPHICAL REPRESENTATION OF TRAFFIC MODEL INPUT AND OUTPUT

FRIDAY WESTBOUND DIRECTION

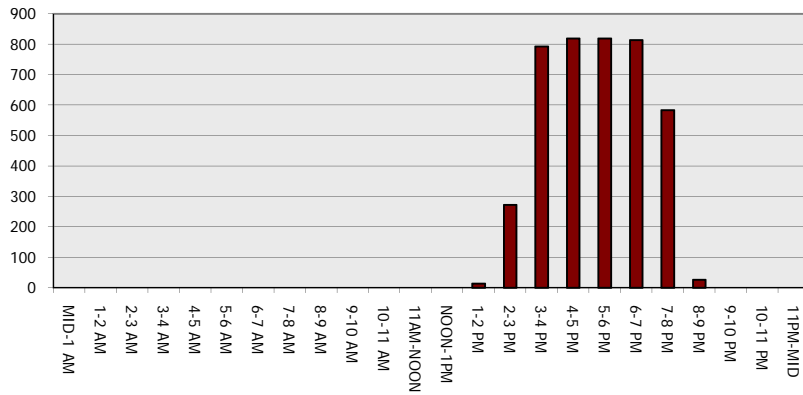
Main Route - Traffic Demand (Vehicles Per Hour)



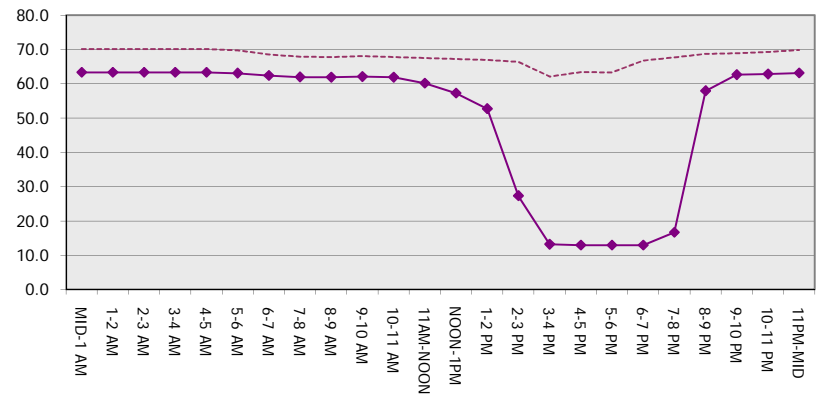
Main Route Average Delay Per Vehicle (Minutes)



Main Route - Average Queue Length (Vehicles)



Main Route - Average Speed (MPH)



IH 94: CTH G TO STH 16 (WAUKESHA COUNTY) CONTINUOUS (24 HOUR) CLOSURE NO DIVERSION ROUTE (MAX QUEUE METHOD)	OCTOBER
	Analyzed for 2009 Construction Season

SUMMARY OF TRAFFIC MODEL OUTPUT

FRIDAY EASTBOUND DIRECTION

TIME OF DAY	FLOWS AND CAPACITY IN VEH/HR							AVERAGE SPEEDS IN MPH		
	MAIN ROUTE		SITE CAPA CITY	FLOW		AV.DEL PER VEH (MINS)	AVERAGE QUEUE (VEH)	MAIN ROUTE		SITE
	DEMAND FLOW	PCT HEAVY		MAIN ROUTE	'DIVER TED'			WITHOUT WORK ZONE	WITH WORK ZONE	
MID-1 AM	211	0.0	3000	211	0	0.36	0	70.2	63.3	49.7
1-2 AM	183	0.0	3000	183	0	0.36	0	70.2	63.3	49.7
2-3 AM	192	0.0	3000	192	0	0.36	0	70.2	63.3	49.7
3-4 AM	178	0.0	3000	178	0	0.36	0	70.2	63.3	49.7
4-5 AM	428	0.0	3000	428	0	0.36	0	70.2	63.3	49.7
5-6 AM	1278	0.0	3000	1278	0	0.35	0	69.1	62.7	49.7
6-7 AM	2749	0.0	2999	2749	0	0.63	5	67.3	57.0	42.6
7-8 AM	3645	0.0	3000	3645	0	5.99	340	66.0	24.5	37.3
8-9 AM	2884	0.0	2999	2884	0	12.63	657	67.1	14.5	37.3
9-10 AM	2110	0.0	2999	2110	0	2.39	188	68.1	40.1	46.5
10-11 AM	2116	0.0	3000	2116	0	0.33	0	68.1	62.1	49.7
11AM-NOON	2159	0.0	3000	2159	0	0.33	0	68.1	62.0	49.7
NOON-1PM	2149	0.0	3000	2149	0	0.33	0	68.1	62.0	49.7
1-2 PM	2404	0.0	3000	2404	0	0.34	0	67.8	61.7	49.2
2-3 PM	2658	0.0	3000	2658	0	0.51	0	67.4	58.9	43.3
3-4 PM	2927	0.0	2999	2927	0	0.68	0	67.1	56.1	38.4
4-5 PM	3112	0.0	2999	3112	0	1.53	47	66.9	46.5	37.3
5-6 PM	3211	0.0	3000	3211	0	4.95	239	66.8	27.7	37.3
6-7 PM	2403	0.0	2999	2403	0	1.96	121	67.8	43.2	44.3
7-8 PM	1607	0.0	3000	1607	0	0.34	0	68.7	62.5	49.7
8-9 PM	1287	0.0	3000	1287	0	0.35	0	69.1	62.7	49.7
9-10 PM	1174	0.0	3000	1174	0	0.35	0	69.3	62.8	49.7
10-11 PM	920	0.0	3000	920	0	0.35	0	69.6	63.0	49.7
11PM-MID	678	0.0	3000	678	0	0.36	0	69.9	63.2	49.7

BREAKDOWN DURATION (MINS)	0
RANGE OF QUEUE DELAY - MIN (VEH-H) MAX	0.0
AV BREAKDOWNS PER DAY	0.00
AV QUEUE DELAY/DAY (VEH-H)	0.0
AV TOTAL DELAY/DAY (VEH-H)	0.0

BREAKDOWN DURATION (MINS)	0
RANGE OF QUEUE DELAY - MIN (VEH-H) MAX	0
AV BREAKDOWNS PER DAY	0
AV QUEUE DELAY/DAY (VEH-H)	0
AV TOTAL DELAY/DAY (VEH-H)	0

MAIN ROUTE WITHOUT WORKS	0.0265
MAIN ROUTE WITH WORKS	0.0237
'DIVERSION'	0.0000

PIA: Personal Injury Accidents

ROAD USER COSTS PER DAY	\$22,543
CONGESTED HOURS PER DAY*	0

*Delays Exceeding User-Specified Maximum

**IH 94: CTH G TO STH 16 (WAUKESHA COUNTY)
CONTINUOUS (24 HOUR) CLOSURE
NO DIVERSION ROUTE (MAX QUEUE METHOD)**

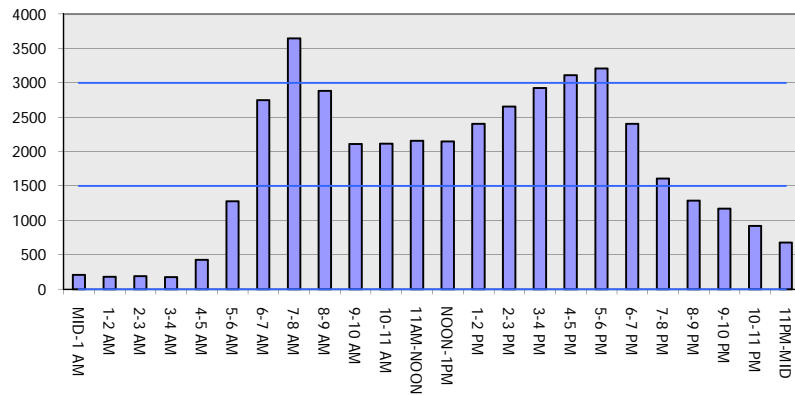
OCTOBER

Analyzed for 2009
Construction Season

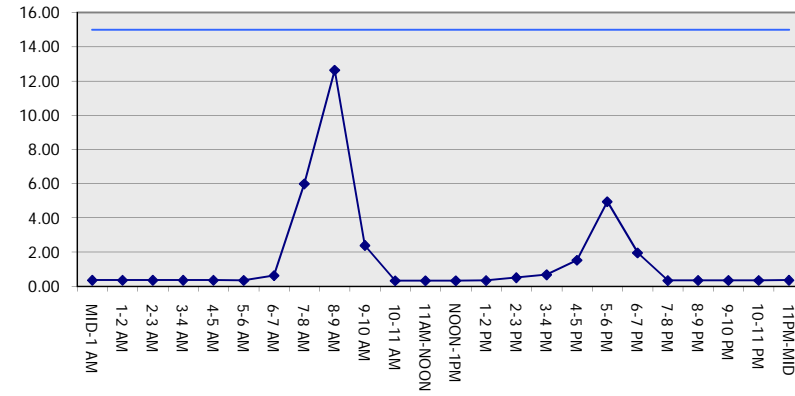
GRAPHICAL REPRESENTATION OF TRAFFIC MODEL INPUT AND OUTPUT

FRIDAY EASTBOUND DIRECTION

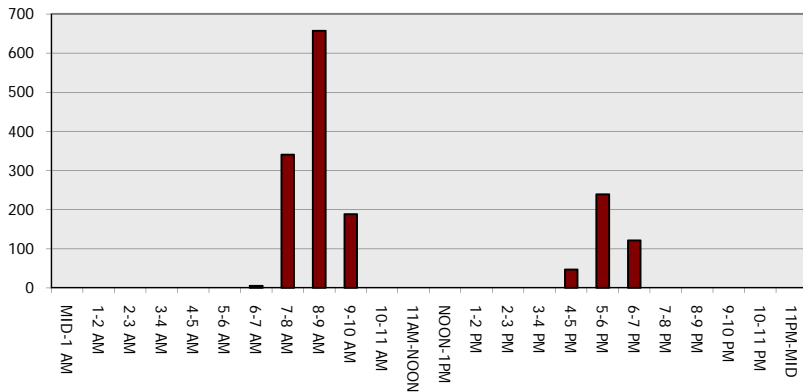
Main Route - Traffic Demand (Vehicles Per Hour)



Main Route Average Delay Per Vehicle (Minutes)



Main Route - Average Queue Length (Vehicles)



Main Route - Average Speed (MPH)

