

IH 94: CTH G TO STH 16 (WAUKESHA COUNTY) CONTINUOUS (24 HOUR) CLOSURE NO DIVERSION ROUTE (MAX QUEUE METHOD)	AUGUST
	Analyzed for 2009 Construction Season

SUMMARY OF TRAFFIC MODEL OUTPUT

SUNDAY WESTBOUND DIRECTION

TIME OF DAY	FLOWS AND CAPACITY IN VEH/HR						AVERAGE SPEEDS IN MPH			
	MAIN ROUTE		SITE CAPA CITY	FLOW		AV.DEL PER VEH (MINS)	AVERAGE QUEUE (VEH)	MAIN ROUTE		SITE
	DEMAND FLOW	PCT HEAVY		MAIN ROUTE	'DIVER TED'			WITHOUT WORK ZONE	WITH WORK ZONE	
MID-1 AM	661	0.0	3000	661	0	0.36	0	69.9	63.2	49.7
1-2 AM	320	0.0	3000	320	0	0.36	0	70.2	63.3	49.7
2-3 AM	207	0.0	3000	207	0	0.36	0	70.2	63.3	49.7
3-4 AM	140	0.0	3000	140	0	0.36	0	70.2	63.3	49.7
4-5 AM	130	0.0	3000	130	0	0.36	0	70.2	63.3	49.7
5-6 AM	241	0.0	3000	241	0	0.36	0	70.2	63.3	49.7
6-7 AM	538	0.0	3000	538	0	0.36	0	70.0	63.3	49.7
7-8 AM	920	0.0	3000	920	0	0.35	0	69.6	63.0	49.7
8-9 AM	1493	0.0	3000	1493	0	0.34	0	68.9	62.5	49.7
9-10 AM	1924	0.0	3000	1924	0	0.34	0	68.4	62.2	49.7
10-11 AM	2526	0.0	3000	2526	0	0.42	0	67.6	60.3	46.2
11AM-NOON	2892	0.0	3000	2892	0	0.66	0	67.1	56.4	38.9
NOON-1PM	2961	0.0	3000	2961	0	0.70	0	67.1	55.8	37.8
1-2 PM	2764	0.0	3000	2764	0	0.57	0	67.3	57.8	41.2
2-3 PM	2995	0.0	2999	2995	0	0.73	0	67.0	55.4	37.4
3-4 PM	2837	0.0	3000	2837	0	0.62	0	67.2	57.0	39.9
4-5 PM	2716	0.0	3000	2716	0	0.54	0	67.4	58.2	42.1
5-6 PM	2308	0.0	3000	2308	0	0.33	0	67.9	61.9	49.7
6-7 PM	1927	0.0	3000	1927	0	0.34	0	68.3	62.2	49.7
7-8 PM	1714	0.0	3000	1714	0	0.34	0	68.6	62.4	49.7
8-9 PM	1328	0.0	3000	1328	0	0.35	0	69.1	62.7	49.7
9-10 PM	1160	0.0	3000	1160	0	0.35	0	69.3	62.8	49.7
10-11 PM	754	0.0	3000	754	0	0.35	0	69.8	63.1	49.7
11PM-MID	490	0.0	3000	490	0	0.36	0	70.1	63.3	49.7

----- SITE BREAKDOWN DELAYS -----

BREAKDOWN DURATION (MINS)	0
RANGE OF QUEUE DELAY - MIN (VEH-H) MAX	0.0
AV BREAKDOWNS PER DAY	0.00
AV QUEUE DELAY/DAY (VEH-H)	0.0
AV TOTAL DELAY/DAY (VEH-H)	0.0

----- SITE ACCIDENT DELAYS -----

BREAKDOWN DURATION (MINS)	0
RANGE OF QUEUE DELAY - MIN (VEH-H) MAX	0
AV BREAKDOWNS PER DAY	0
AV QUEUE DELAY/DAY (VEH-H)	0
AV TOTAL DELAY/DAY (VEH-H)	0

AVERAGE ACCIDENT NUMBERS (PIA/DAY)

MAIN ROUTE WITHOUT WORKS	0.0223
MAIN ROUTE WITH WORKS	0.0200
'DIVERSION'	0.0000

PIA: Personal Injury Accidents

IMPACTS ON ROAD USERS

ROAD USER COSTS PER DAY	\$4,922
CONGESTED HOURS PER DAY*	0

*Delays Exceeding User-Specified Maximum

**IH 94: CTH G TO STH 16 (WAUKESHA COUNTY)
CONTINUOUS (24 HOUR) CLOSURE
NO DIVERSION ROUTE (MAX QUEUE METHOD)**

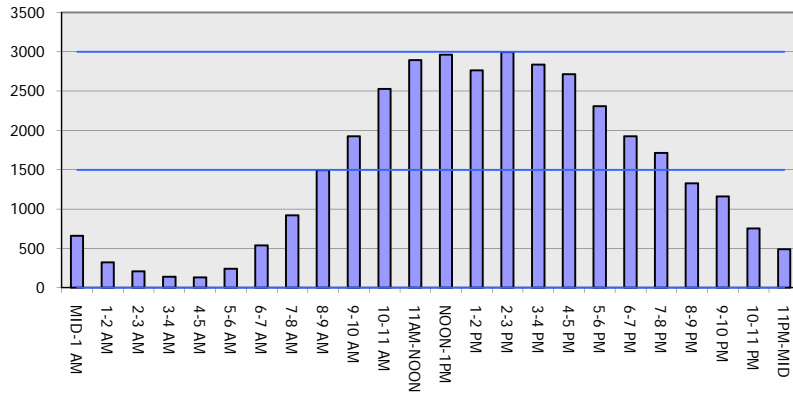
AUGUST

Analyzed for 2009
Construction Season

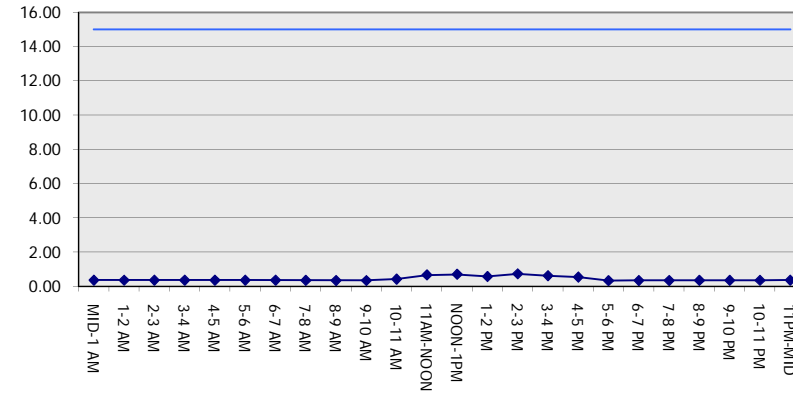
GRAPHICAL REPRESENTATION OF TRAFFIC MODEL INPUT AND OUTPUT

SUNDAY WESTBOUND DIRECTION

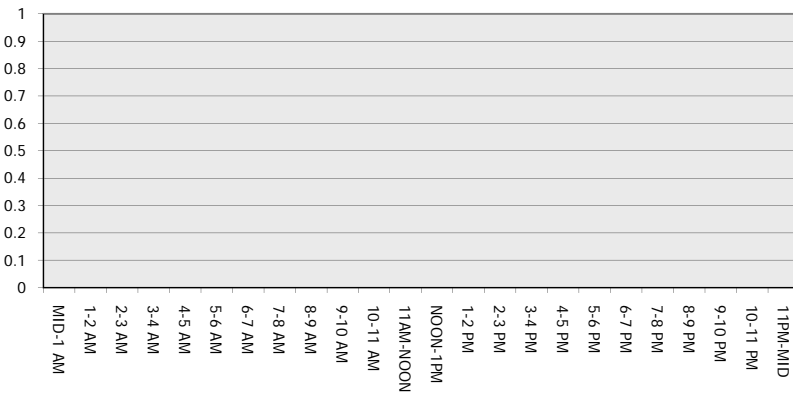
Main Route - Traffic Demand (Vehicles Per Hour)



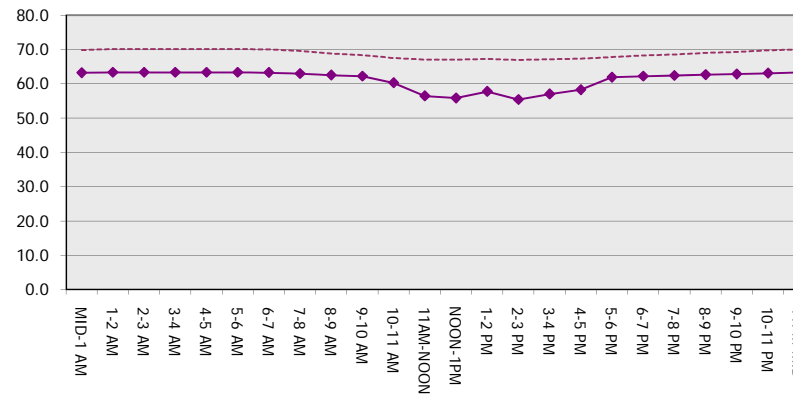
Main Route Average Delay Per Vehicle (Minutes)



Main Route - Average Queue Length (Vehicles)



Main Route - Average Speed (MPH)



IH 94: CTH G TO STH 16 (WAUKESHA COUNTY) CONTINUOUS (24 HOUR) CLOSURE NO DIVERSION ROUTE (MAX QUEUE METHOD)	AUGUST
	Analyzed for 2009 Construction Season

SUMMARY OF TRAFFIC MODEL OUTPUT

SUNDAY EASTBOUND DIRECTION

TIME OF DAY	FLOWS AND CAPACITY IN VEH/HR							AVERAGE SPEEDS IN MPH		
	MAIN ROUTE		SITE CAPA CITY	FLOW		AV.DEL PER VEH (MINS)	AVERAGE QUEUE (VEH)	MAIN ROUTE		SITE
	DEMAND FLOW	PCT HEAVY		MAIN ROUTE	'DIVER TED'			WITHOUT WORK ZONE	WITH WORK ZONE	
MID-1 AM	818	0.0	3000	818	0	0.35	0	69.7	63.1	49.7
1-2 AM	519	0.0	3000	519	0	0.36	0	70.1	63.3	49.7
2-3 AM	300	0.0	3000	300	0	0.36	0	70.2	63.3	49.7
3-4 AM	195	0.0	3000	195	0	0.36	0	70.2	63.3	49.7
4-5 AM	240	0.0	3000	240	0	0.36	0	70.2	63.3	49.7
5-6 AM	238	0.0	3000	238	0	0.36	0	70.2	63.3	49.7
6-7 AM	376	0.0	3000	376	0	0.36	0	70.2	63.3	49.7
7-8 AM	558	0.0	3000	558	0	0.36	0	70.0	63.3	49.7
8-9 AM	1008	0.0	3000	1008	0	0.35	0	69.5	62.9	49.7
9-10 AM	1622	0.0	3000	1622	0	0.34	0	68.7	62.5	49.7
10-11 AM	2367	0.0	2999	2367	0	0.38	0	67.8	61.1	47.8
11AM-NOON	2961	0.0	2999	2961	0	0.84	9	67.1	54.1	38.5
NOON-1PM	3285	0.0	3000	3285	0	3.51	167	66.6	33.3	37.3
1-2 PM	3378	0.0	3000	3378	0	9.72	511	66.5	17.7	37.3
2-3 PM	3288	0.0	2999	3142	146	15.11+	794	66.6	13.1	37.3
3-4 PM	3387	0.0	2999	2997	390	15.53+	817	66.5	12.9	37.3
4-5 PM	3465	0.0	2999	2998	467	15.53+	817	66.4	12.9	37.3
5-6 PM	3354	0.0	3000	2998	356	15.54+	817	66.6	12.9	37.3
6-7 PM	2930	0.0	2999	2898	32	15.00+	786	67.1	13.2	37.3
7-8 PM	2893	0.0	3000	2893	0	13.20	687	67.1	14.1	37.3
8-9 PM	2660	0.0	2999	2660	0	9.41	491	67.4	18.2	37.4
9-10 PM	1750	0.0	3000	1750	0	0.77	38	68.6	55.9	49.7
10-11 PM	1159	0.0	3000	1159	0	0.35	0	69.3	62.8	49.7
11PM-MID	579	0.0	3000	579	0	0.36	0	70.0	63.3	49.7

+ INDICATES QUEUEING EXCEEDS USER-SPECIFIED MAXIMUM LIMIT

----- SITE BREAKDOWN DELAYS -----	
BREAKDOWN DURATION (MINS)	0
RANGE OF QUEUE DELAY - MIN (VEH-H) MAX	0.0
AV BREAKDOWNS PER DAY	0.00
AV QUEUE DELAY/DAY (VEH-H)	0.0
AV TOTAL DELAY/DAY (VEH-H)	0.0

----- SITE ACCIDENT DELAYS -----	
BREAKDOWN DURATION (MINS)	0
RANGE OF QUEUE DELAY - MIN (VEH-H) MAX	0
AV BREAKDOWNS PER DAY	0
AV QUEUE DELAY/DAY (VEH-H)	0
AV TOTAL DELAY/DAY (VEH-H)	0

AVERAGE ACCIDENT NUMBERS (PIA/DAY)	
MAIN ROUTE WITHOUT WORKS	0.0269
MAIN ROUTE WITH WORKS	0.0233
'DIVERSION'	0.0020

PIA: Personal Injury Accidents

ECONOMIC IMPACT ON ROAD USERS	
ROAD USER COSTS PER DAY	\$102,504
CONGESTED HOURS PER DAY*	5

*Delays Exceeding User-Specified Maximum

**IH 94: CTH G TO STH 16 (WAUKESHA COUNTY)
CONTINUOUS (24 HOUR) CLOSURE
NO DIVERSION ROUTE (MAX QUEUE METHOD)**

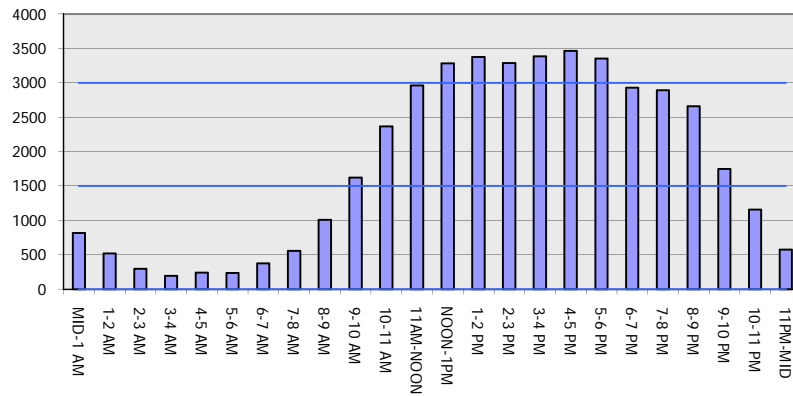
AUGUST

Analyzed for 2009
Construction Season

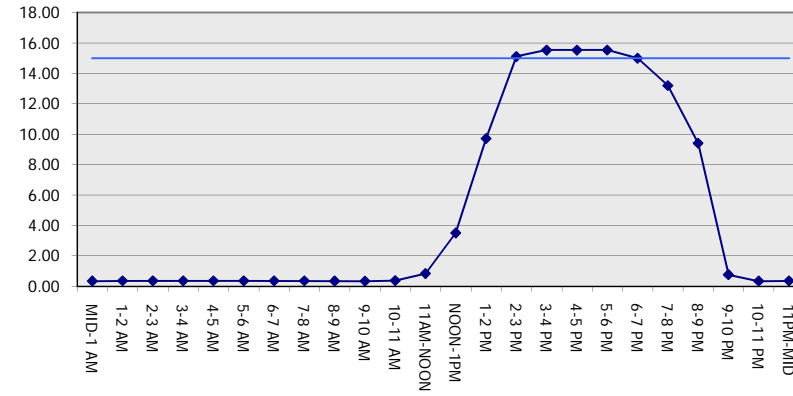
GRAPHICAL REPRESENTATION OF TRAFFIC MODEL INPUT AND OUTPUT

SUNDAY EASTBOUND DIRECTION

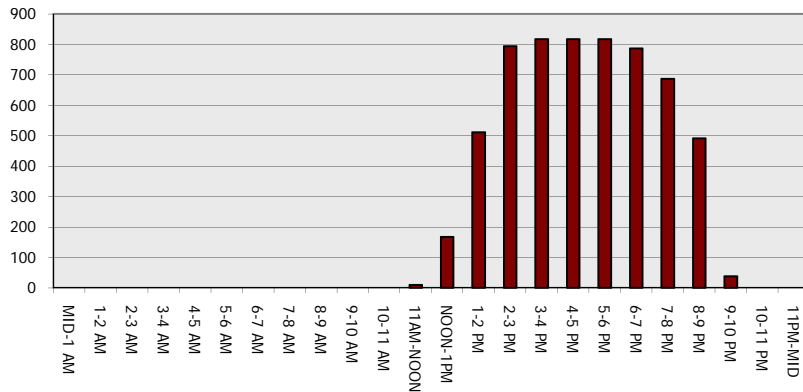
Main Route - Traffic Demand (Vehicles Per Hour)



Main Route Average Delay Per Vehicle (Minutes)



Main Route - Average Queue Length (Vehicles)



Main Route - Average Speed (MPH)

