

IH 94: CTH G TO STH 16 (WAUKESHA COUNTY) CONTINUOUS (24 HOUR) CLOSURE NO DIVERSION ROUTE (MAX QUEUE METHOD)	AUGUST
	Analyzed for 2009 Construction Season

SUMMARY OF TRAFFIC MODEL OUTPUT

SATURDAY WESTBOUND DIRECTION

TIME OF DAY	FLOWS AND CAPACITY IN VEH/HR						AVERAGE SPEEDS IN MPH			
	MAIN ROUTE		SITE CAPA CITY	FLOW		AV.DEL PER VEH (MINS)	AVERAGE QUEUE (VEH)	MAIN ROUTE		SITE
	DEMAND FLOW	PCT HEAVY		MAIN ROUTE	'DIVER TED'			WITHOUT WORK ZONE	WITH WORK ZONE	
MID-1 AM	564	0.0	3000	564	0	0.36	0	70.0	63.3	49.7
1-2 AM	320	0.0	3000	320	0	0.36	0	70.2	63.3	49.7
2-3 AM	251	0.0	3000	251	0	0.36	0	70.2	63.3	49.7
3-4 AM	211	0.0	3000	211	0	0.36	0	70.2	63.3	49.7
4-5 AM	281	0.0	3000	281	0	0.36	0	70.2	63.3	49.7
5-6 AM	544	0.0	3000	544	0	0.36	0	70.0	63.3	49.7
6-7 AM	1097	0.0	3000	1097	0	0.35	0	69.4	62.8	49.7
7-8 AM	1757	0.0	3000	1757	0	0.34	0	68.6	62.3	49.7
8-9 AM	2453	0.0	3000	2453	0	0.37	0	67.7	61.1	47.9
9-10 AM	2892	0.0	2999	2892	0	0.66	0	67.1	56.5	39.0
10-11 AM	3088	0.0	2999	3088	0	1.39	38	66.9	47.8	37.3
11AM-NOON	3063	0.0	2999	3063	0	2.84	117	66.9	36.9	37.3
NOON-1PM	3156	0.0	3000	3156	0	4.92	234	66.8	27.8	37.3
1-2 PM	2869	0.0	2999	2869	0	5.23	250	67.2	26.8	37.3
2-3 PM	2871	0.0	3000	2871	0	2.68	111	67.2	37.9	37.4
3-4 PM	2884	0.0	3000	2884	0	0.86	11	67.1	53.8	38.8
4-5 PM	2713	0.0	3000	2713	0	0.54	0	67.4	58.2	42.2
5-6 PM	2381	0.0	3000	2381	0	0.33	0	67.8	61.9	49.7
6-7 PM	2038	0.0	3000	2038	0	0.33	0	68.2	62.2	49.7
7-8 PM	1728	0.0	3000	1728	0	0.34	0	68.6	62.4	49.7
8-9 PM	1554	0.0	3000	1554	0	0.34	0	68.8	62.5	49.7
9-10 PM	1480	0.0	3000	1480	0	0.34	0	68.9	62.6	49.7
10-11 PM	1389	0.0	3000	1389	0	0.34	0	69.0	62.7	49.7
11PM-MID	1059	0.0	3000	1059	0	0.35	0	69.4	62.9	49.7

----- SITE BREAKDOWN DELAYS -----

BREAKDOWN DURATION (MINS)	0
RANGE OF QUEUE DELAY - MIN (VEH-H) MAX	0.0
AV BREAKDOWNS PER DAY	0.00
AV QUEUE DELAY/DAY (VEH-H)	0.0
AV TOTAL DELAY/DAY (VEH-H)	0.0

----- SITE ACCIDENT DELAYS -----

BREAKDOWN DURATION (MINS)	0
RANGE OF QUEUE DELAY - MIN (VEH-H) MAX	0
AV BREAKDOWNS PER DAY	0
AV QUEUE DELAY/DAY (VEH-H)	0
AV TOTAL DELAY/DAY (VEH-H)	0

AVERAGE ACCIDENT NUMBERS (PIA/DAY)

MAIN ROUTE WITHOUT WORKS	0.0265
MAIN ROUTE WITH WORKS	0.0237
'DIVERSION'	0.0000

PIA: Personal Injury Accidents

IMPACTS ON ROAD USERS

ROAD USER COSTS PER DAY	\$17,738
CONGESTED HOURS PER DAY*	0

*Delays Exceeding User-Specified Maximum

**IH 94: CTH G TO STH 16 (WAUKESHA COUNTY)
CONTINUOUS (24 HOUR) CLOSURE
NO DIVERSION ROUTE (MAX QUEUE METHOD)**

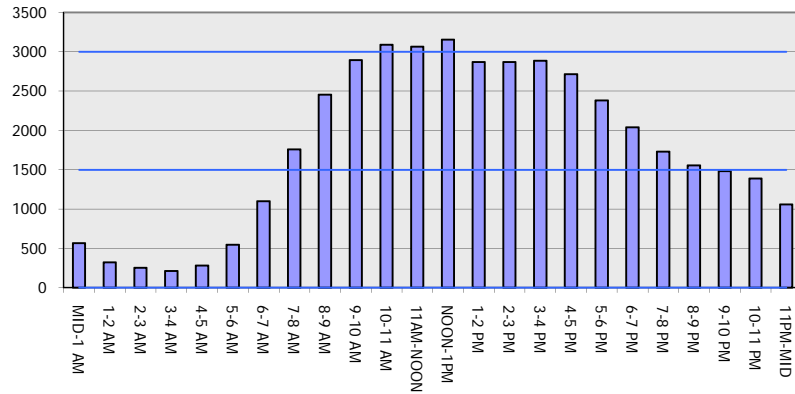
AUGUST

Analyzed for 2009
Construction Season

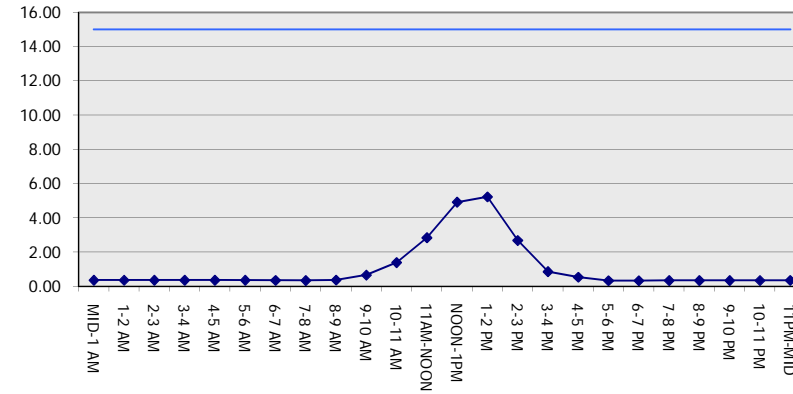
GRAPHICAL REPRESENTATION OF TRAFFIC MODEL INPUT AND OUTPUT

SATURDAY WESTBOUND DIRECTION

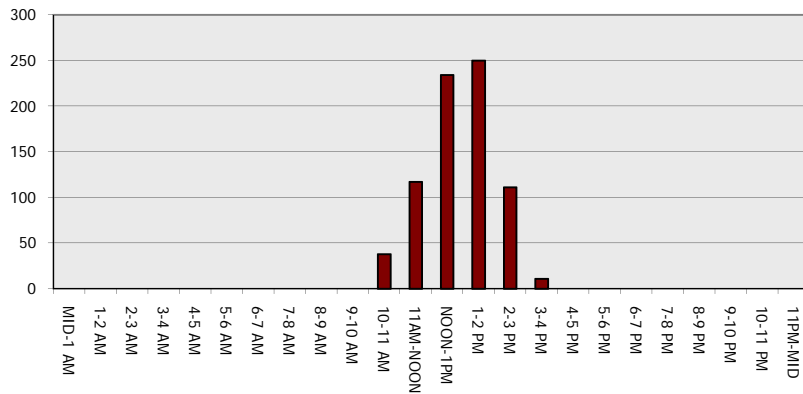
Main Route - Traffic Demand (Vehicles Per Hour)



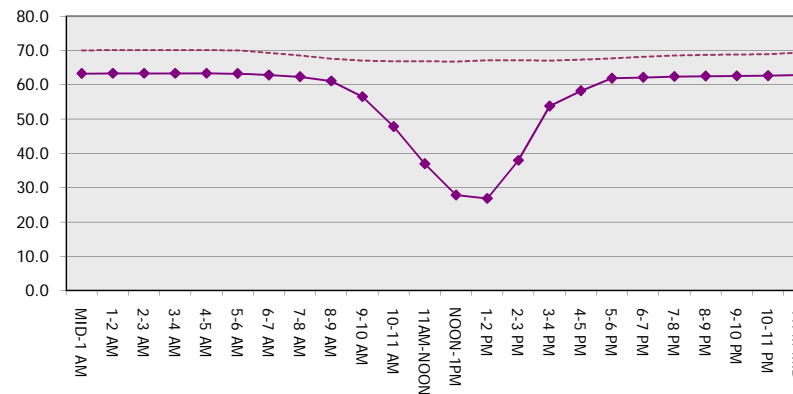
Main Route Average Delay Per Vehicle (Minutes)



Main Route - Average Queue Length (Vehicles)



Main Route - Average Speed (MPH)



IH 94: CTH G TO STH 16 (WAUKESHA COUNTY) CONTINUOUS (24 HOUR) CLOSURE NO DIVERSION ROUTE (MAX QUEUE METHOD)	AUGUST
	Analyzed for 2009 Construction Season

SUMMARY OF TRAFFIC MODEL OUTPUT

SATURDAY EASTBOUND DIRECTION

TIME OF DAY	FLOWS AND CAPACITY IN VEH/HR							AVERAGE SPEEDS IN MPH		
	MAIN ROUTE		SITE CAPA CITY	FLOW		AV.DEL PER VEH (MINS)	AVERAGE QUEUE (VEH)	MAIN ROUTE		SITE
	DEMAND FLOW	PCT HEAVY		MAIN ROUTE	'DIVER TED'			WITHOUT WORK ZONE	WITH WORK ZONE	
MID-1 AM	583	0.0	3000	583	0	0.36	0	70.0	63.3	49.7
1-2 AM	320	0.0	3000	320	0	0.36	0	70.2	63.3	49.7
2-3 AM	207	0.0	3000	207	0	0.36	0	70.2	63.3	49.7
3-4 AM	196	0.0	3000	196	0	0.36	0	70.2	63.3	49.7
4-5 AM	275	0.0	3000	275	0	0.36	0	70.2	63.3	49.7
5-6 AM	459	0.0	3000	459	0	0.36	0	70.2	63.3	49.7
6-7 AM	636	0.0	3000	636	0	0.36	0	69.9	63.2	49.7
7-8 AM	1017	0.0	3000	1017	0	0.35	0	69.5	62.9	49.7
8-9 AM	1460	0.0	3000	1460	0	0.34	0	68.9	62.6	49.7
9-10 AM	2088	0.0	3000	2088	0	0.33	0	68.1	62.1	49.7
10-11 AM	2550	0.0	3000	2550	0	0.43	0	67.6	60.1	45.6
11AM-NOON	2639	0.0	3000	2639	0	0.49	0	67.4	59.1	43.7
NOON-1PM	2922	0.0	3000	2922	0	0.68	0	67.1	56.2	38.5
1-2 PM	2971	0.0	3000	2971	0	0.71	0	67.1	55.7	37.7
2-3 PM	2883	0.0	3000	2883	0	0.65	0	67.1	56.6	39.1
3-4 PM	2097	0.0	2999	2097	0	0.33	0	68.1	62.1	49.7
4-5 PM	3478	0.0	2999	3478	0	4.01	215	66.4	31.1	37.3
5-6 PM	2863	0.0	2999	2863	0	8.79	446	67.2	19.1	37.3
6-7 PM	2300	0.0	2999	2300	0	1.61	100	67.9	46.3	46.0
7-8 PM	1873	0.0	3000	1873	0	0.34	0	68.4	62.3	49.7
8-9 PM	1760	0.0	3000	1760	0	0.34	0	68.6	62.3	49.7
9-10 PM	1584	0.0	3000	1584	0	0.34	0	68.7	62.5	49.7
10-11 PM	1325	0.0	3000	1325	0	0.35	0	69.1	62.7	49.7
11PM-MID	1039	0.0	3000	1039	0	0.35	0	69.4	62.9	49.7

----- SITE BREAKDOWN DELAYS -----	
BREAKDOWN DURATION (MINS)	0
RANGE OF QUEUE DELAY - MIN (VEH-H) MAX	0.0
AV BREAKDOWNS PER DAY	0.00
AV QUEUE DELAY/DAY (VEH-H)	0.0
AV TOTAL DELAY/DAY (VEH-H)	0.0

----- SITE ACCIDENT DELAYS -----	
BREAKDOWN DURATION (MINS)	0
RANGE OF QUEUE DELAY - MIN (VEH-H) MAX	0
AV BREAKDOWNS PER DAY	0
AV QUEUE DELAY/DAY (VEH-H)	0
AV TOTAL DELAY/DAY (VEH-H)	0

AVERAGE ACCIDENT NUMBERS (PIA/DAY)	
MAIN ROUTE WITHOUT WORKS	0.0245
MAIN ROUTE WITH WORKS	0.0219
'DIVERSION'	0.0000

PIA: Personal Injury Accidents

ECONOMIC IMPACT ON ROAD USERS	
ROAD USER COSTS PER DAY	\$15,874
CONGESTED HOURS PER DAY*	0

*Delays Exceeding User-Specified Maximum

**IH 94: CTH G TO STH 16 (WAUKESHA COUNTY)
CONTINUOUS (24 HOUR) CLOSURE
NO DIVERSION ROUTE (MAX QUEUE METHOD)**

AUGUST
Analyzed for 2009
Construction Season

GRAPHICAL REPRESENTATION OF TRAFFIC MODEL INPUT AND OUTPUT
SATURDAY EASTBOUND DIRECTION

