

IH 94: CTH G TO STH 16 (WAUKESHA COUNTY) CONTINUOUS (24 HOUR) 2 LANE CLOSURE NO DIVERSION ROUTE (MAX QUEUE METHOD)	AUGUST
	Analyzed for 2009 Construction Season

SUMMARY OF TRAFFIC MODEL OUTPUT

MON-THUR WESTBOUND DIRECTION

TIME OF DAY	FLOWS AND CAPACITY IN VEH/HR							AVERAGE SPEEDS IN MPH			
	MAIN ROUTE		SITE CAPA CITY	FLOW		AV.DEL PER VEH (MINS)	AVERAGE QUEUE (VEH)	MAIN ROUTE		SITE	
	DEMAND FLOW	PCT HEAVY		MAIN ROUTE	'DIVER TED'			WITHOUT WORK ZONE	WITH WORK ZONE		
MID-1 AM	403	0.0	1500	403	0	0.52	0	70.2	60.7	43.9	
1-2 AM	233	0.0	1500	233	0	0.50	0	70.2	61.0	44.5	
2-3 AM	185	0.0	1500	185	0	0.49	0	70.2	61.1	44.7	
3-4 AM	195	0.0	1500	195	0	0.50	0	70.2	61.1	44.7	
4-5 AM	329	0.0	1500	329	0	0.51	0	70.2	60.8	44.2	
5-6 AM	755	0.0	1500	755	0	0.56	0	69.8	59.8	42.5	
6-7 AM	1656	0.0	1499	1656	0	2.27	44	68.7	41.2	31.2	
7-8 AM	2347	0.0	1500	1725	622	14.72+	369	67.8	12.9	32.6	
8-9 AM	2437	0.0	1499	1500	937	16.32+	399	67.7	11.9	30.8	
9-10 AM	2278	0.0	1500	1500	778	16.33+	400	67.9	11.9	30.8	
10-11 AM	2286	0.0	1500	1500	786	16.33+	400	67.9	11.9	30.8	
11AM-NOON	2330	0.0	1500	1500	830	16.33+	400	67.8	11.9	30.8	
NOON-1PM	2491	0.0	1500	1500	991	16.31+	400	67.6	11.9	30.8	
1-2 PM	2468	0.0	1500	1500	968	16.32+	400	67.7	11.9	30.8	
2-3 PM	2833	0.0	1500	1500	1333	16.29+	400	67.2	11.9	30.8	
3-4 PM	3492	0.0	1500	1500	1992	16.25+	400	66.4	11.9	30.8	
4-5 PM	4025	0.0	1500	1500	2525	16.08+	400	63.3	11.9	30.8	
5-6 PM	3957	0.0	1500	1500	2457	16.11+	400	63.8	11.9	30.8	
6-7 PM	2842	0.0	1500	1500	1342	16.29+	400	67.2	11.9	30.8	
7-8 PM	1901	0.0	1500	1500	401	16.35+	400	68.4	11.9	30.8	
8-9 PM	1603	0.0	1500	1500	103	16.37+	400	68.7	11.9	30.8	
9-10 PM	1365	0.0	1499	1365	0	14.16+	345	69.1	13.4	30.8	
10-11 PM	1277	0.0	1500	1277	0	7.02	171	69.1	22.5	32.2	
11PM-MID	835	0.0	1500	835	0	0.62	1	69.7	58.8	42.2	

+ INDICATES QUEUEING EXCEEDS USER-SPECIFIED MAXIMUM LIMIT

----- SITE BREAKDOWN DELAYS -----	
BREAKDOWN DURATION (MINS)	0
RANGE OF QUEUE DELAY - MIN (VEH-H) MAX	0.0
AV BREAKDOWNS PER DAY	0.00
AV QUEUE DELAY/DAY (VEH-H)	0.0
AV TOTAL DELAY/DAY (VEH-H)	0.0

----- SITE ACCIDENT DELAYS -----	
BREAKDOWN DURATION (MINS)	0
RANGE OF QUEUE DELAY - MIN (VEH-H) MAX	0
AV BREAKDOWNS PER DAY	0
AV QUEUE DELAY/DAY (VEH-H)	0
AV TOTAL DELAY/DAY (VEH-H)	0

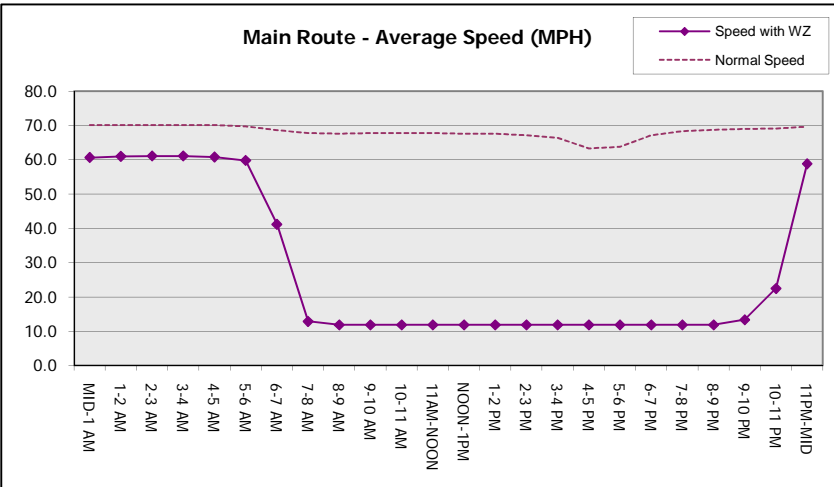
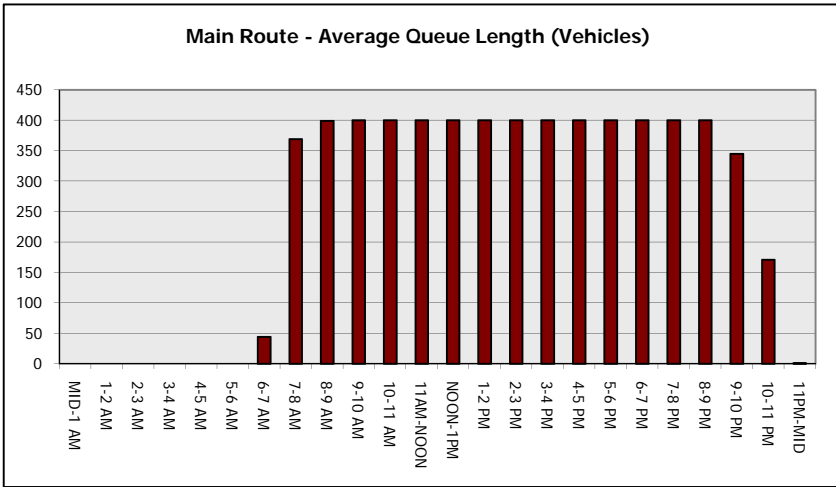
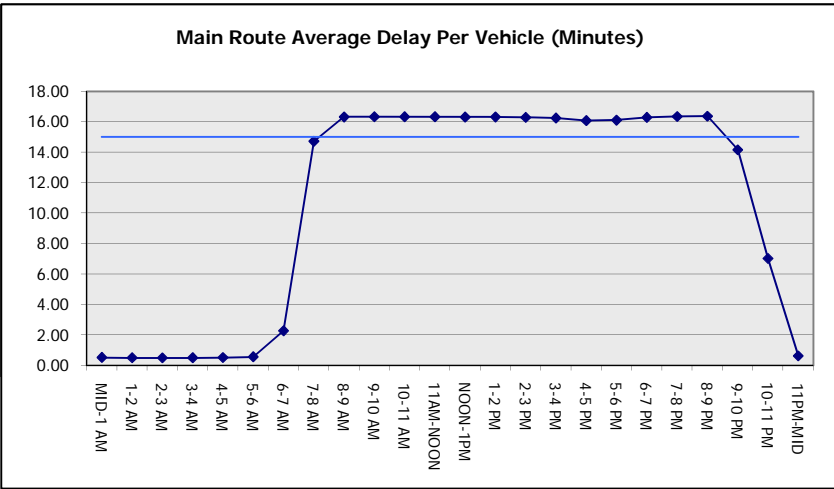
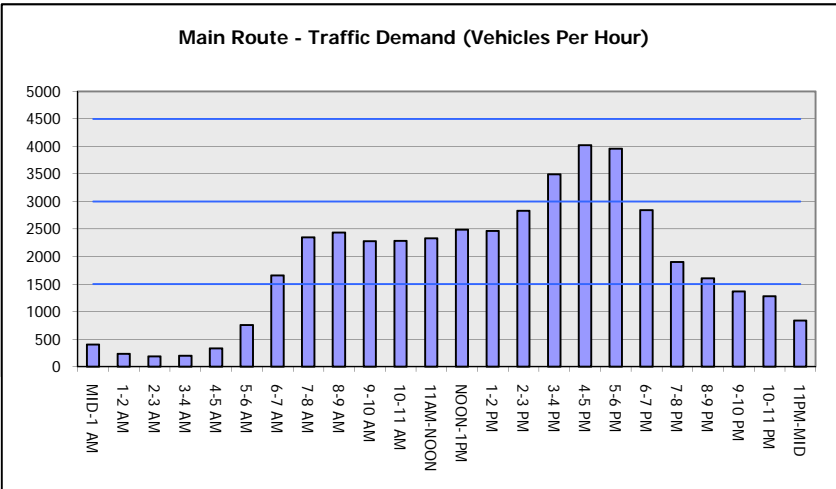
AVERAGE ACCIDENT NUMBERS (PIA/DAY)	
MAIN ROUTE WITHOUT WORKS	0.0277
MAIN ROUTE WITH WORKS	0.0158
'DIVERSION'	0.0231
PIA: Personal Injury Accidents	
IMPACTS ON ROAD USERS	
ROAD USER COSTS PER DAY	\$139,184
CONGESTED HOURS PER DAY*	15

*Delays Exceeding User-Specified Maximum

**IH 94: CTH G TO STH 16 (WAUKESHA COUNTY)
CONTINUOUS (24 HOUR) 2 LANE CLOSURE
NO DIVERSION ROUTE (MAX QUEUE METHOD)**

AUGUST
Analyzed for 2009
Construction Season

GRAPHICAL REPRESENTATION OF TRAFFIC MODEL INPUT AND OUTPUT
MON-THUR WESTBOUND DIRECTION



IH 94: CTH G TO STH 16 (WAUKESHA COUNTY) CONTINUOUS (24 HOUR) 2 LANE CLOSURE NO DIVERSION ROUTE (MAX QUEUE METHOD)	AUGUST
	Analyzed for 2009 Construction Season

SUMMARY OF TRAFFIC MODEL OUTPUT

MON-THUR EASTBOUND DIRECTION

TIME OF DAY	FLOWS AND CAPACITY IN VEH/HR							AVERAGE SPEEDS IN MPH			
	MAIN ROUTE		SITE CAPA CITY	FLOW		AV.DEL PER VEH (MINS)	AVERAGE QUEUE (VEH)	MAIN ROUTE		SITE	
	DEMAND FLOW	PCT HEAVY		MAIN ROUTE	'DIVER TED'			WITHOUT WORK ZONE	WITH WORK ZONE		
MID-1 AM	305	0.0	1500	305	0	0.51	0	70.2	60.9	44.3	
1-2 AM	219	0.0	1500	219	0	0.50	0	70.2	61.0	44.6	
2-3 AM	174	0.0	1500	174	0	0.49	0	70.2	61.1	44.8	
3-4 AM	212	0.0	1500	212	0	0.50	0	70.2	61.0	44.6	
4-5 AM	453	0.0	1500	453	0	0.53	0	70.2	60.6	43.7	
5-6 AM	1358	0.0	1499	1358	0	1.35	18	69.1	49.4	36.1	
6-7 AM	2741	0.0	1500	1917	824	13.62+	348	67.3	13.7	32.7	
7-8 AM	3880	0.0	1499	1500	2380	16.09+	399	64.3	11.9	31.5	
8-9 AM	3075	0.0	1500	1500	1575	16.23+	400	66.9	11.9	31.5	
9-10 AM	2527	0.0	1500	1488	1039	16.22+	398	67.6	11.9	31.5	
10-11 AM	2443	0.0	1499	1500	943	16.31+	399	67.7	11.9	30.9	
11AM-NOON	2437	0.0	1500	1500	937	16.31+	400	67.7	11.9	30.9	
NOON-1PM	2388	0.0	1500	1500	888	16.32+	400	67.8	11.9	30.9	
1-2 PM	2428	0.0	1500	1500	928	16.31+	400	67.7	11.9	30.9	
2-3 PM	2600	0.0	1500	1500	1100	16.30+	400	67.5	11.9	30.9	
3-4 PM	2754	0.0	1500	1500	1254	16.29+	400	67.3	11.9	30.9	
4-5 PM	2980	0.0	1500	1500	1480	16.28+	400	67.0	11.9	30.9	
5-6 PM	3051	0.0	1500	1500	1551	16.27+	400	66.9	11.9	30.9	
6-7 PM	2174	0.0	1500	1436	738	16.10+	394	68.1	12.0	30.9	
7-8 PM	1568	0.0	1499	1466	101	16.22+	396	68.8	11.9	30.8	
8-9 PM	1343	0.0	1499	1343	0	12.74	309	69.1	14.5	30.8	
9-10 PM	1283	0.0	1500	1283	0	5.30	128	69.1	27.0	32.6	
10-11 PM	833	0.0	1500	833	0	0.57	0	69.7	59.6	42.3	
11PM-MID	572	0.0	1500	572	0	0.54	0	70.0	60.3	43.2	

+ INDICATES QUEUEING EXCEEDS USER-SPECIFIED MAXIMUM LIMIT

BREAKDOWN DURATION (MINS)	0
RANGE OF QUEUE DELAY - MIN (VEH-H) MAX	0.0
AV BREAKDOWNS PER DAY	0.00
AV QUEUE DELAY/DAY (VEH-H)	0.0
AV TOTAL DELAY/DAY (VEH-H)	0.0

BREAKDOWN DURATION (MINS)	0
RANGE OF QUEUE DELAY - MIN (VEH-H) MAX	0
AV BREAKDOWNS PER DAY	0
AV QUEUE DELAY/DAY (VEH-H)	0
AV TOTAL DELAY/DAY (VEH-H)	0

MAIN ROUTE WITHOUT WORKS	0.0272
MAIN ROUTE WITH WORKS	0.0156
'DIVERSION'	0.0226

PIA: Personal Injury Accidents

ROAD USER COSTS PER DAY	\$135,994
CONGESTED HOURS PER DAY*	14

*Delays Exceeding User-Specified Maximum

**IH 94: CTH G TO STH 16 (WAUKESHA COUNTY)
CONTINUOUS (24 HOUR) 2 LANE CLOSURE
NO DIVERSION ROUTE (MAX QUEUE METHOD)**

AUGUST

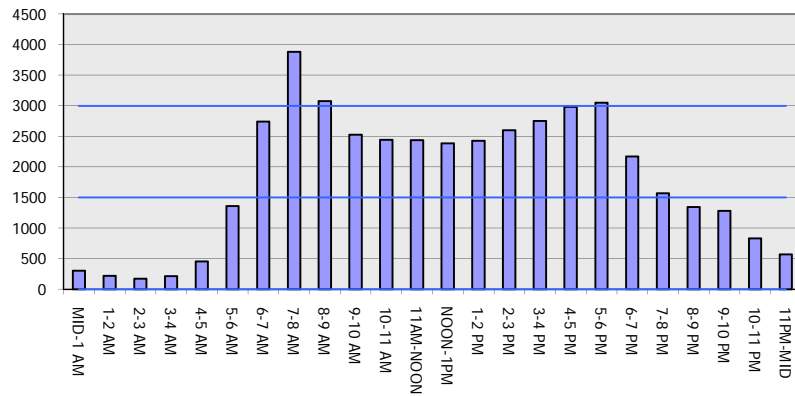
Analyzed for 2009
Construction Season

GRAPHICAL REPRESENTATION OF TRAFFIC MODEL INPUT AND OUTPUT

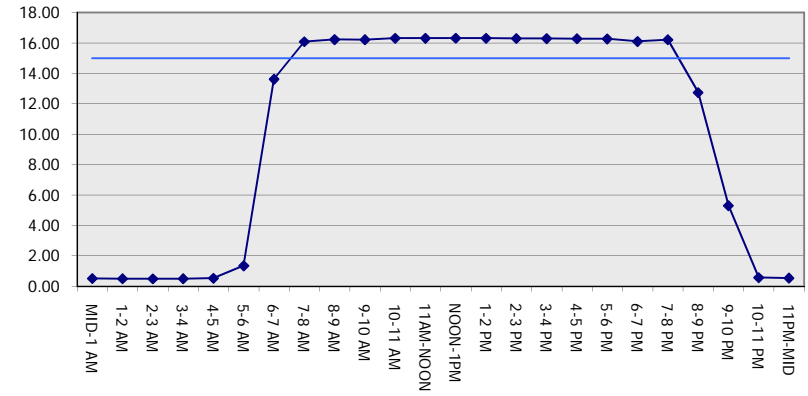
MON-THUR

EASTBOUND DIRECTION

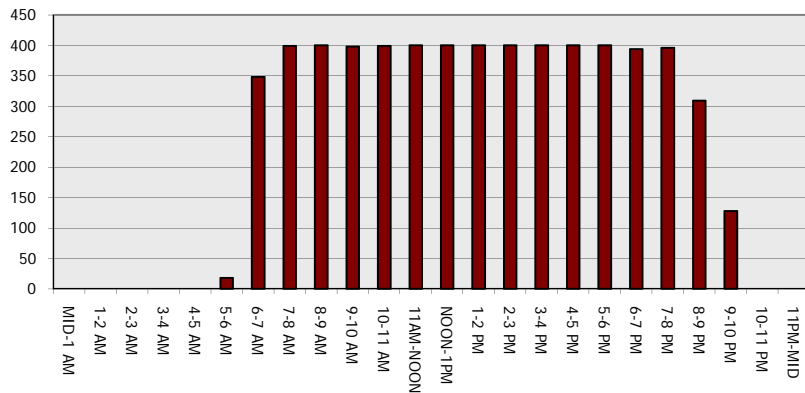
Main Route - Traffic Demand (Vehicles Per Hour)



Main Route Average Delay Per Vehicle (Minutes)



Main Route - Average Queue Length (Vehicles)



Main Route - Average Speed (MPH)

