

IH 94: CTH G TO STH 16 (WAUKESHA COUNTY) CONTINUOUS (24 HOUR) 2 LANE CLOSURE NO DIVERSION ROUTE (MAX QUEUE METHOD)	AUGUST
	Analyzed for 2009 Construction Season

SUMMARY OF TRAFFIC MODEL OUTPUT

FRIDAY WESTBOUND DIRECTION

TIME OF DAY	FLOWS AND CAPACITY IN VEH/HR						AVERAGE SPEEDS IN MPH				
	MAIN ROUTE		SITE CAPA CITY	FLOW		AV.DEL PER VEH (MINS)	AVERAGE QUEUE (VEH)	MAIN ROUTE		SITE	
	DEMAND FLOW	PCT HEAVY		MAIN ROUTE	'DIVER TED'			WITHOUT WORK ZONE	WITH WORK ZONE		
MID-1 AM	434	0.0	1500	434	0	0.53	0	70.2	60.6	43.8	
1-2 AM	271	0.0	1500	271	0	0.51	0	70.2	60.9	44.4	
2-3 AM	220	0.0	1500	220	0	0.50	0	70.2	61.0	44.6	
3-4 AM	236	0.0	1500	236	0	0.50	0	70.2	61.0	44.5	
4-5 AM	343	0.0	1500	343	0	0.51	0	70.2	60.8	44.1	
5-6 AM	800	0.0	1500	800	0	0.57	0	69.7	59.7	42.4	
6-7 AM	1727	0.0	1499	1727	0	2.88	64	68.6	37.2	30.8	
7-8 AM	2350	0.0	1499	1735	615	15.49+	382	67.8	12.4	30.8	
8-9 AM	2602	0.0	1500	1500	1102	16.31+	400	67.5	11.9	30.8	
9-10 AM	2528	0.0	1500	1500	1028	16.31+	400	67.6	11.9	30.8	
10-11 AM	2905	0.0	1500	1500	1405	16.29+	400	67.1	11.9	30.8	
11AM-NOON	2977	0.0	1500	1500	1477	16.28+	400	67.0	11.9	30.8	
NOON-1PM	3274	0.0	1500	1500	1774	16.26+	400	66.7	11.9	30.8	
1-2 PM	3283	0.0	1500	1500	1783	16.26+	400	66.6	11.9	30.8	
2-3 PM	3760	0.0	1500	1500	2260	16.18+	400	65.1	11.9	30.8	
3-4 PM	4307	0.0	1500	1500	2807	15.97+	400	61.4	11.9	30.8	
4-5 PM	4052	0.0	1500	1500	2552	16.07+	400	63.2	11.9	30.8	
5-6 PM	3902	0.0	1500	1500	2402	16.13+	400	64.2	11.9	30.8	
6-7 PM	3682	0.0	1500	1500	2182	16.21+	400	65.7	11.9	30.8	
7-8 PM	2485	0.0	1500	1500	985	16.32+	400	67.6	11.9	30.8	
8-9 PM	1844	0.0	1499	1459	384	16.20+	396	68.4	11.9	30.8	
9-10 PM	1535	0.0	1499	1463	72	16.17+	394	68.8	12.0	30.8	
10-11 PM	1259	0.0	1499	1259	0	11.25	278	69.2	16.0	31.2	
11PM-MID	1036	0.0	1500	1036	0	1.35	28	69.4	49.6	39.7	

+ INDICATES QUEUEING EXCEEDS USER-SPECIFIED MAXIMUM LIMIT

----- SITE BREAKDOWN DELAYS -----	
BREAKDOWN DURATION (MINS)	0
RANGE OF QUEUE DELAY - MIN (VEH-H) MAX	0.0
AV BREAKDOWNS PER DAY	0.00
AV QUEUE DELAY/DAY (VEH-H)	0.0
AV TOTAL DELAY/DAY (VEH-H)	0.0

----- SITE ACCIDENT DELAYS -----	
BREAKDOWN DURATION (MINS)	0
RANGE OF QUEUE DELAY - MIN (VEH-H) MAX	0
AV BREAKDOWNS PER DAY	0
AV QUEUE DELAY/DAY (VEH-H)	0
AV TOTAL DELAY/DAY (VEH-H)	0

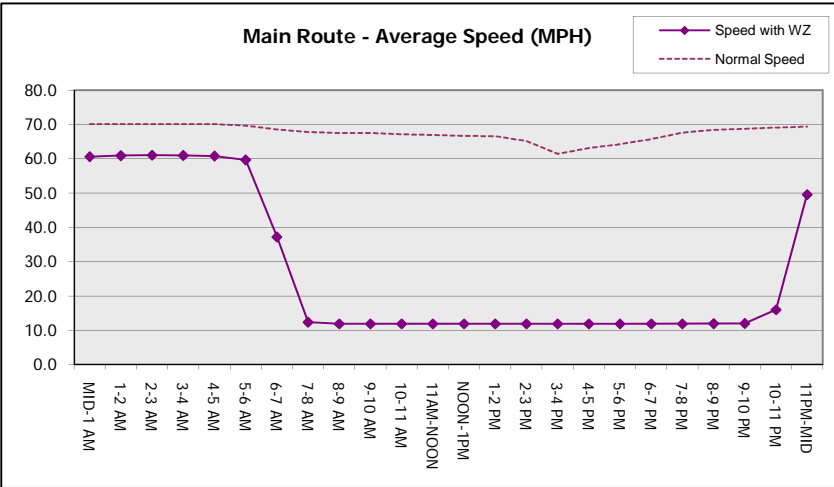
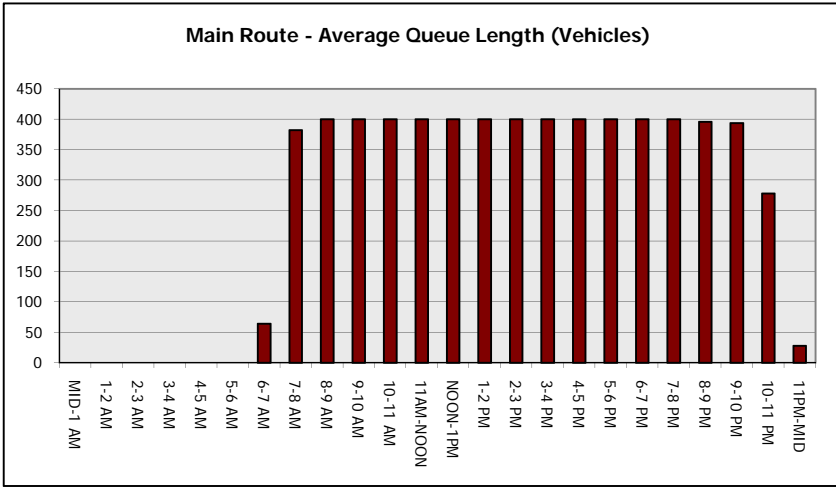
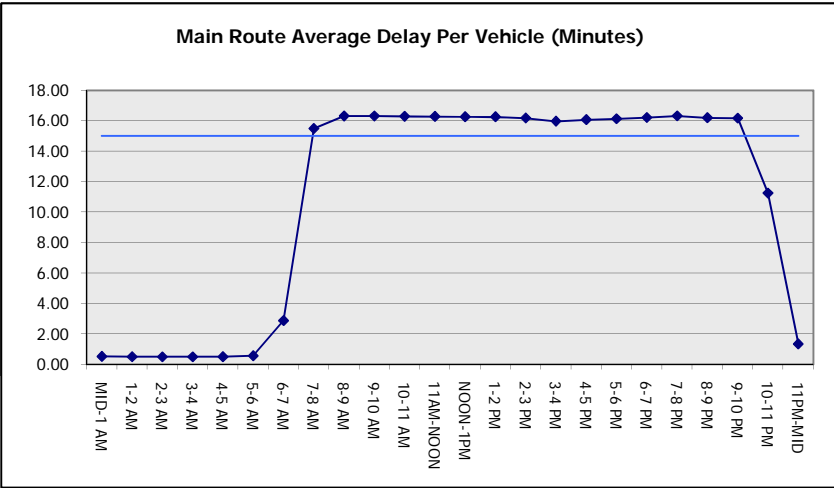
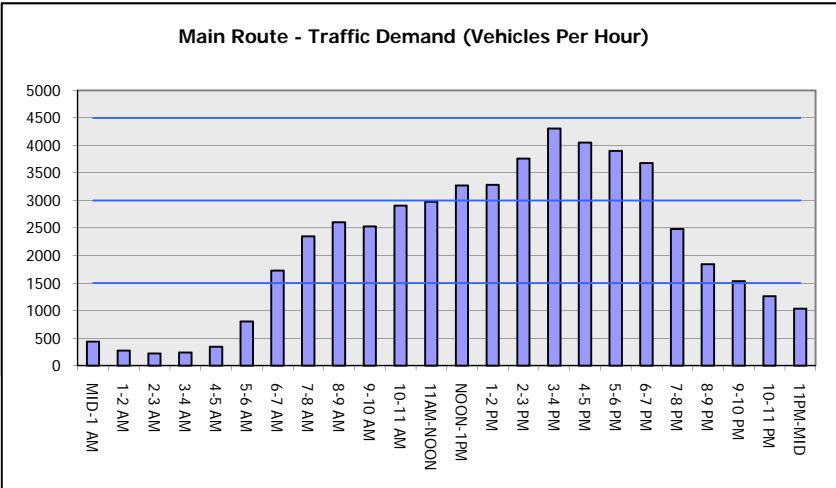
AVERAGE ACCIDENT NUMBERS (PIA/DAY)	
MAIN ROUTE WITHOUT WORKS	0.0322
MAIN ROUTE WITH WORKS	0.0161
'DIVERSION'	0.0328
<small>PIA: Personal Injury Accidents</small>	
IMPACTS ON ROAD USERS	
ROAD USER COSTS PER DAY	\$169,889
CONGESTED HOURS PER DAY*	15

*Delays Exceeding User-Specified Maximum

**IH 94: CTH G TO STH 16 (WAUKESHA COUNTY)
CONTINUOUS (24 HOUR) 2 LANE CLOSURE
NO DIVERSION ROUTE (MAX QUEUE METHOD)**

AUGUST
Analyzed for 2009
Construction Season

GRAPHICAL REPRESENTATION OF TRAFFIC MODEL INPUT AND OUTPUT
FRIDAY WESTBOUND DIRECTION



IH 94: CTH G TO STH 16 (WAUKESHA COUNTY) CONTINUOUS (24 HOUR) 2 LANE CLOSURE NO DIVERSION ROUTE (MAX QUEUE METHOD)	AUGUST
	Analyzed for 2009 Construction Season

SUMMARY OF TRAFFIC MODEL OUTPUT

FRIDAY EASTBOUND DIRECTION

TIME OF DAY	FLOWS AND CAPACITY IN VEH/HR							AVERAGE SPEEDS IN MPH			
	MAIN ROUTE		SITE CAPA CITY	FLOW		AV.DEL PER VEH (MINS)	AVERAGE QUEUE (VEH)	MAIN ROUTE		SITE	
	DEMAND FLOW	PCT HEAVY		MAIN ROUTE	'DIVER TED'			WITHOUT WORK ZONE	WITH WORK ZONE		
MID-1 AM	360	0.0	1500	360	0	0.52	0	70.2	60.7	44.0	
1-2 AM	232	0.0	1500	232	0	0.50	0	70.2	61.0	44.5	
2-3 AM	204	0.0	1500	204	0	0.50	0	70.2	61.0	44.6	
3-4 AM	232	0.0	1500	232	0	0.50	0	70.2	61.0	44.5	
4-5 AM	447	0.0	1500	447	0	0.53	0	70.2	60.6	43.7	
5-6 AM	1188	0.0	1499	1188	0	0.78	0	69.2	56.2	37.1	
6-7 AM	2410	0.0	1499	1812	598	10.21+	277	67.8	17.1	31.5	
7-8 AM	3479	0.0	1500	1500	1979	16.16+	400	66.4	11.9	32.3	
8-9 AM	2865	0.0	1500	1500	1365	16.20+	399	67.2	11.9	32.3	
9-10 AM	2455	0.0	1500	1500	955	16.23+	400	67.7	11.9	32.3	
10-11 AM	2509	0.0	1500	1500	1009	16.22+	400	67.6	11.9	32.3	
11AM-NOON	2533	0.0	1500	1500	1033	16.22+	400	67.6	11.9	32.3	
NOON-1PM	2595	0.0	1500	1500	1095	16.22+	400	67.5	11.9	32.3	
1-2 PM	2736	0.0	1500	1500	1236	16.21+	400	67.3	11.9	32.3	
2-3 PM	2907	0.0	1500	1500	1407	16.20+	400	67.1	11.9	32.3	
3-4 PM	3020	0.0	1500	1500	1520	16.19+	400	67.0	11.9	32.3	
4-5 PM	3100	0.0	1500	1500	1600	16.18+	400	66.9	11.9	32.3	
5-6 PM	3079	0.0	1500	1500	1579	16.19+	400	66.9	11.9	32.3	
6-7 PM	2466	0.0	1500	1505	961	16.22+	399	67.7	11.9	32.1	
7-8 PM	1944	0.0	1500	1552	392	16.13+	394	68.3	12.0	30.8	
8-9 PM	1674	0.0	1500	1519	155	16.28+	397	68.7	11.9	30.8	
9-10 PM	1620	0.0	1499	1511	109	16.32+	398	68.7	11.9	30.8	
10-11 PM	1156	0.0	1499	1156	0	9.37	250	69.3	18.4	33.4	
11PM-MID	848	0.0	1500	848	0	0.65	2	69.7	58.4	42.2	

+ INDICATES QUEUEING EXCEEDS USER-SPECIFIED MAXIMUM LIMIT

BREAKDOWN DURATION (MINS)	0
RANGE OF QUEUE DELAY - MIN (VEH-H) MAX	0.0
AV BREAKDOWNS PER DAY	0.00
AV QUEUE DELAY/DAY (VEH-H)	0.0
AV TOTAL DELAY/DAY (VEH-H)	0.0

BREAKDOWN DURATION (MINS)	0
RANGE OF QUEUE DELAY - MIN (VEH-H) MAX	0
AV BREAKDOWNS PER DAY	0
AV QUEUE DELAY/DAY (VEH-H)	0
AV TOTAL DELAY/DAY (VEH-H)	0

MAIN ROUTE WITHOUT WORKS	0.0286
MAIN ROUTE WITH WORKS	0.0161
'DIVERSION'	0.0244

PIA: Personal Injury Accidents

ROAD USER COSTS PER DAY	\$150,263
CONGESTED HOURS PER DAY*	16

*Delays Exceeding User-Specified Maximum

**IH 94: CTH G TO STH 16 (WAUKESHA COUNTY)
CONTINUOUS (24 HOUR) 2 LANE CLOSURE
NO DIVERSION ROUTE (MAX QUEUE METHOD)**

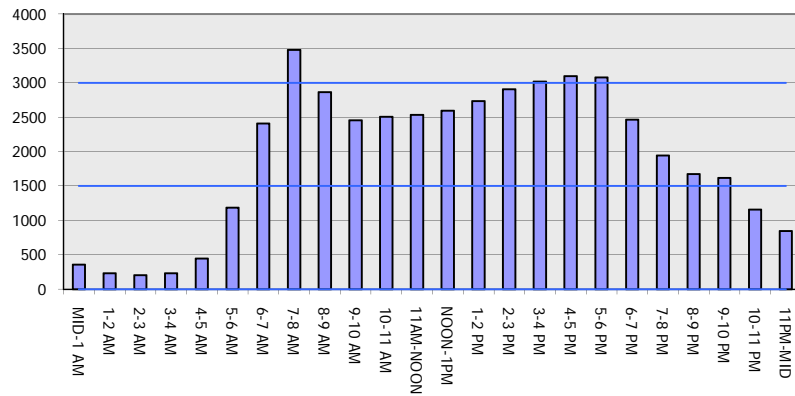
AUGUST

Analyzed for 2009
Construction Season

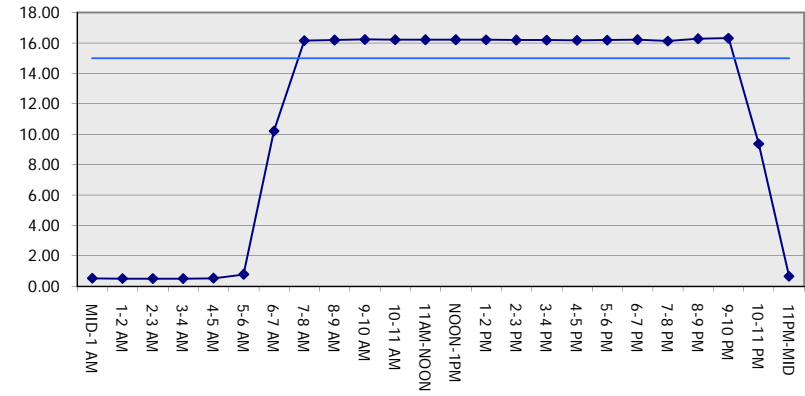
GRAPHICAL REPRESENTATION OF TRAFFIC MODEL INPUT AND OUTPUT

FRIDAY EASTBOUND DIRECTION

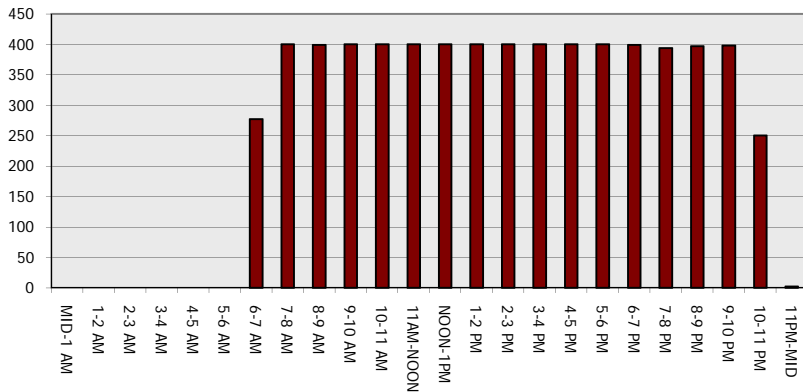
Main Route - Traffic Demand (Vehicles Per Hour)



Main Route Average Delay Per Vehicle (Minutes)



Main Route - Average Queue Length (Vehicles)



Main Route - Average Speed (MPH)

