

<b>IH 94: CTH G TO STH 16 (WAUKESHA COUNTY)                  CONTINUOUS (24 HOUR) CLOSURE                  NO DIVERSION ROUTE (MAX QUEUE METHOD)</b>	<b>AUGUST</b>
	Analyzed for 2009 Construction Season

**SUMMARY OF TRAFFIC MODEL OUTPUT**

FRIDAY WESTBOUND DIRECTION

TIME OF DAY	FLOWS AND CAPACITY IN VEH/HR						AVERAGE SPEEDS IN MPH			
	MAIN ROUTE		SITE CAPA CITY	FLOW		AV.DEL PER VEH (MINS)	AVERAGE QUEUE (VEH)	MAIN ROUTE		SITE
	DEMAND FLOW	PCT HEAVY		MAIN ROUTE	'DIVER TED'			WITHOUT WORK ZONE	WITH WORK ZONE	
MID-1 AM	434	0.0	3000	434	0	0.36	0	70.2	63.3	49.7
1-2 AM	271	0.0	3000	271	0	0.36	0	70.2	63.3	49.7
2-3 AM	220	0.0	3000	220	0	0.36	0	70.2	63.3	49.7
3-4 AM	236	0.0	3000	236	0	0.36	0	70.2	63.3	49.7
4-5 AM	343	0.0	3000	343	0	0.36	0	70.2	63.3	49.7
5-6 AM	800	0.0	3000	800	0	0.35	0	69.7	63.1	49.7
6-7 AM	1727	0.0	3000	1727	0	0.34	0	68.6	62.4	49.7
7-8 AM	2350	0.0	3000	2350	0	0.33	0	67.8	61.9	49.7
8-9 AM	2602	0.0	3000	2602	0	0.47	0	67.5	59.4	44.5
9-10 AM	2528	0.0	3000	2528	0	0.42	0	67.6	60.3	46.1
10-11 AM	2905	0.0	2999	2905	0	0.67	0	67.1	56.4	38.8
11AM-NOON	2977	0.0	2999	2977	0	0.76	2	67.0	55.1	37.8
NOON-1PM	3274	0.0	3000	3274	0	3.00	139	66.7	36.0	37.3
1-2 PM	3283	0.0	2999	3283	0	8.02	411	66.6	20.3	37.3
2-3 PM	3760	0.0	3000	3305	455	14.58+	773	65.1	13.4	37.3
3-4 PM	4307	0.0	2999	2965	1342	15.35+	824	61.4	12.9	37.3
4-5 PM	4052	0.0	2999	2994	1058	15.37+	819	63.2	12.9	37.3
5-6 PM	3902	0.0	2999	2999	904	15.42+	818	64.2	12.9	37.3
6-7 PM	3682	0.0	3000	2999	684	15.50+	817	65.7	12.9	37.3
7-8 PM	2485	0.0	2999	2485	0	11.62+	628	67.6	15.7	38.5
8-9 PM	1844	0.0	3000	1844	0	0.87	47	68.4	54.6	49.7
9-10 PM	1535	0.0	3000	1535	0	0.34	0	68.8	62.5	49.7
10-11 PM	1259	0.0	3000	1259	0	0.35	0	69.2	62.7	49.7
11PM-MID	1036	0.0	3000	1036	0	0.35	0	69.4	62.9	49.7

+ INDICATES QUEUEING EXCEEDS USER-SPECIFIED MAXIMUM LIMIT

*----- SITE BREAKDOWN DELAYS -----*	
BREAKDOWN DURATION (MINS)	0
RANGE OF QUEUE DELAY - MIN (VEH-H) MAX	0.0
AV BREAKDOWNS PER DAY	0.00
AV QUEUE DELAY/DAY (VEH-H)	0.0
AV TOTAL DELAY/DAY (VEH-H)	0.0

*----- SITE ACCIDENT DELAYS -----*	
BREAKDOWN DURATION (MINS)	0
RANGE OF QUEUE DELAY - MIN (VEH-H) MAX	0
AV BREAKDOWNS PER DAY	0
AV QUEUE DELAY/DAY (VEH-H)	0
AV TOTAL DELAY/DAY (VEH-H)	0

AVERAGE ACCIDENT NUMBERS (PIA/DAY)	
MAIN ROUTE WITHOUT WORKS	0.0322
MAIN ROUTE WITH WORKS	0.0263
'DIVERSION'	0.0064
PIA: Personal Injury Accidents	
IMPACTS ON ROAD USERS	
ROAD USER COSTS PER DAY	\$85,145
CONGESTED HOURS PER DAY*	6

\*Delays Exceeding User-Specified Maximum

**IH 94: CTH G TO STH 16 (WAUKESHA COUNTY)  
CONTINUOUS (24 HOUR) CLOSURE  
NO DIVERSION ROUTE (MAX QUEUE METHOD)**

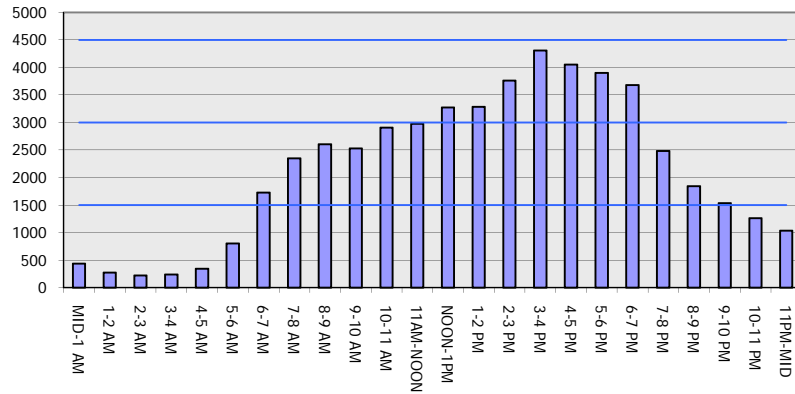
**AUGUST**

Analyzed for 2009  
Construction Season

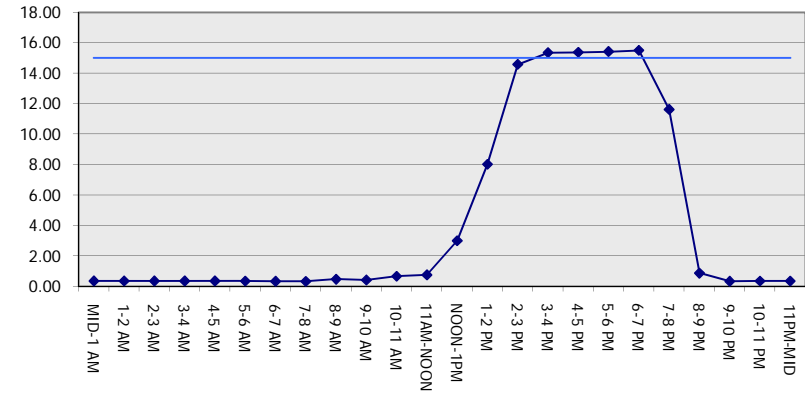
**GRAPHICAL REPRESENTATION OF TRAFFIC MODEL INPUT AND OUTPUT**

**FRIDAY WESTBOUND DIRECTION**

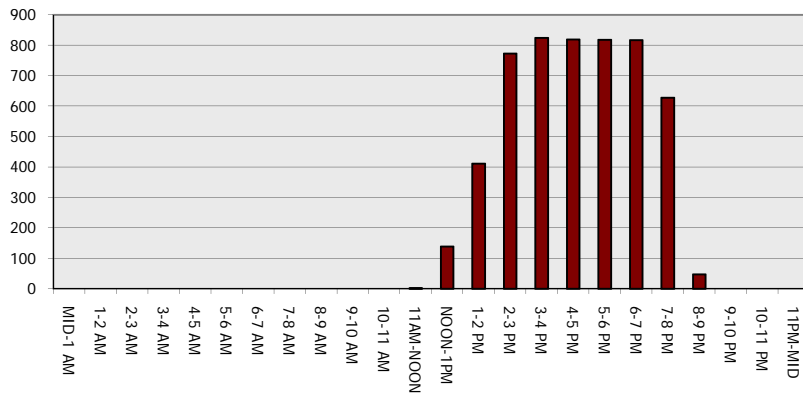
**Main Route - Traffic Demand (Vehicles Per Hour)**



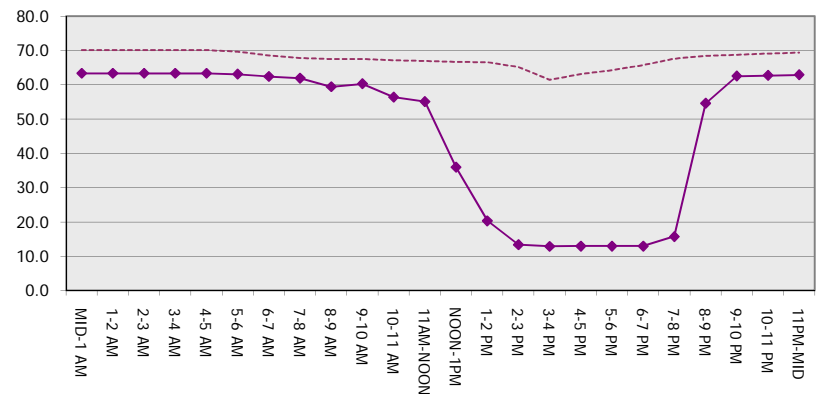
**Main Route Average Delay Per Vehicle (Minutes)**



**Main Route - Average Queue Length (Vehicles)**



**Main Route - Average Speed (MPH)**



<b>IH 94: CTH G TO STH 16 (WAUKESHA COUNTY)                  CONTINUOUS (24 HOUR) CLOSURE                  NO DIVERSION ROUTE (MAX QUEUE METHOD)</b>	<b>AUGUST</b>
	Analyzed for 2009 Construction Season

**SUMMARY OF TRAFFIC MODEL OUTPUT**

FRIDAY EASTBOUND DIRECTION

TIME OF DAY	FLOWS AND CAPACITY IN VEH/HR							AVERAGE SPEEDS IN MPH		
	MAIN ROUTE		SITE CAPA CITY	FLOW		AV.DEL PER VEH (MINS)	AVERAGE QUEUE (VEH)	MAIN ROUTE		SITE
	DEMAND FLOW	PCT HEAVY		MAIN ROUTE	'DIVER TED'			WITHOUT WORK ZONE	WITH WORK ZONE	
MID-1 AM	360	0.0	3000	360	0	0.36	0	70.2	63.3	49.7
1-2 AM	232	0.0	3000	232	0	0.36	0	70.2	63.3	49.7
2-3 AM	204	0.0	3000	204	0	0.36	0	70.2	63.3	49.7
3-4 AM	232	0.0	3000	232	0	0.36	0	70.2	63.3	49.7
4-5 AM	447	0.0	3000	447	0	0.36	0	70.2	63.3	49.7
5-6 AM	1188	0.0	3000	1188	0	0.35	0	69.2	62.8	49.7
6-7 AM	2410	0.0	2999	2410	0	0.43	0	67.8	60.3	46.1
7-8 AM	3479	0.0	2999	3479	0	4.21	225	66.4	30.2	37.3
8-9 AM	2865	0.0	2999	2865	0	8.75	443	67.2	19.1	37.3
9-10 AM	2455	0.0	2999	2455	0	1.90	117	67.7	43.7	44.5
10-11 AM	2509	0.0	3000	2509	0	0.41	0	67.6	60.5	46.6
11AM-NOON	2533	0.0	3000	2533	0	0.42	0	67.6	60.2	46.0
NOON-1PM	2595	0.0	3000	2595	0	0.46	0	67.5	59.6	44.6
1-2 PM	2736	0.0	3000	2736	0	0.56	0	67.3	58.1	41.7
2-3 PM	2907	0.0	2999	2907	0	0.67	0	67.1	56.3	38.8
3-4 PM	3020	0.0	2999	3020	0	0.82	5	67.0	54.2	37.3
4-5 PM	3100	0.0	3000	3100	0	1.96	70	66.9	42.8	37.3
5-6 PM	3079	0.0	3000	3079	0	4.00	181	66.9	31.2	37.3
6-7 PM	2466	0.0	2999	2466	0	1.14	51	67.7	50.9	45.3
7-8 PM	1944	0.0	3000	1944	0	0.34	0	68.3	62.2	49.7
8-9 PM	1674	0.0	3000	1674	0	0.34	0	68.7	62.4	49.7
9-10 PM	1620	0.0	3000	1620	0	0.34	0	68.7	62.5	49.7
10-11 PM	1156	0.0	3000	1156	0	0.35	0	69.3	62.8	49.7
11PM-MID	848	0.0	3000	848	0	0.35	0	69.7	63.0	49.7

BREAKDOWN DURATION (MINS)	0
RANGE OF QUEUE DELAY - MIN (VEH-H) MAX	0.0
AV BREAKDOWNS PER DAY	0.00
AV QUEUE DELAY/DAY (VEH-H)	0.0
AV TOTAL DELAY/DAY (VEH-H)	0.0

BREAKDOWN DURATION (MINS)	0
RANGE OF QUEUE DELAY - MIN (VEH-H) MAX	0
AV BREAKDOWNS PER DAY	0
AV QUEUE DELAY/DAY (VEH-H)	0
AV TOTAL DELAY/DAY (VEH-H)	0

MAIN ROUTE WITHOUT WORKS	0.0286
MAIN ROUTE WITH WORKS	0.0256
'DIVERSION'	0.0000

PIA: Personal Injury Accidents

ROAD USER COSTS PER DAY	\$17,904
CONGESTED HOURS PER DAY*	0

\*Delays Exceeding User-Specified Maximum

**IH 94: CTH G TO STH 16 (WAUKESHA COUNTY)  
CONTINUOUS (24 HOUR) CLOSURE  
NO DIVERSION ROUTE (MAX QUEUE METHOD)**

**AUGUST**  
Analyzed for 2009  
Construction Season

**GRAPHICAL REPRESENTATION OF TRAFFIC MODEL INPUT AND OUTPUT**  
**FRIDAY EASTBOUND DIRECTION**

