

IH 94: STH 16 TO USH 18 (WAUKESHA COUNTY) CONTINUOUS (24 HOUR) CLOSURE NO DIVERSION ROUTE (MAX QUEUE METHOD)	OCTOBER
	Analyzed for 2009 Construction Season

SUMMARY OF TRAFFIC MODEL OUTPUT

SUNDAY WESTBOUND DIRECTION

TIME OF DAY	FLOWS AND CAPACITY IN VEH/HR						AVERAGE SPEEDS IN MPH			
	MAIN ROUTE		SITE CAPA CITY	FLOW		AV.DEL PER VEH (MINS)	AVERAGE QUEUE (VEH)	MAIN ROUTE		SITE
	DEMAND FLOW	PCT HEAVY		MAIN ROUTE	'DIVER TED'			WITHOUT WORK ZONE	WITH WORK ZONE	
MID-1 AM	757	0.0	3000	757	0	0.35	0	69.8	63.5	49.7
1-2 AM	432	0.0	3000	432	0	0.36	0	70.2	63.8	49.7
2-3 AM	372	0.0	3000	372	0	0.36	0	70.2	63.8	49.7
3-4 AM	240	0.0	3000	240	0	0.36	0	70.2	63.8	49.7
4-5 AM	210	0.0	3000	210	0	0.36	0	70.2	63.8	49.7
5-6 AM	361	0.0	3000	361	0	0.36	0	70.2	63.8	49.7
6-7 AM	598	0.0	3000	598	0	0.36	0	70.0	63.7	49.7
7-8 AM	967	0.0	3000	967	0	0.35	0	69.6	63.4	49.7
8-9 AM	1396	0.0	3000	1396	0	0.34	0	69.0	63.0	49.7
9-10 AM	2047	0.0	3000	2047	0	0.33	0	68.2	62.5	49.7
10-11 AM	2633	0.0	2999	2633	0	0.49	0	67.4	59.7	44.0
11AM-NOON	3107	0.0	2999	3107	0	1.16	26	66.9	51.1	37.3
NOON-1PM	3492	0.0	3000	3492	0	6.48	347	66.4	24.5	37.3
1-2 PM	3286	0.0	2999	3190	95	14.02+	738	66.6	14.2	37.3
2-3 PM	3224	0.0	3000	3001	223	15.33+	805	66.8	13.4	37.3
3-4 PM	3398	0.0	3000	3001	397	15.32+	805	66.5	13.4	37.3
4-5 PM	3177	0.0	3000	3002	174	15.33+	805	66.8	13.4	37.3
5-6 PM	2833	0.0	3000	2833	0	13.98+	731	67.2	14.2	37.3
6-7 PM	2436	0.0	2999	2436	0	6.54	370	67.7	24.5	40.3
7-8 PM	1952	0.0	3000	1952	0	0.37	2	68.3	62.1	49.7
8-9 PM	1364	0.0	3000	1364	0	0.34	0	69.1	63.1	49.7
9-10 PM	1058	0.0	3000	1058	0	0.35	0	69.4	63.3	49.7
10-11 PM	854	0.0	3000	854	0	0.35	0	69.7	63.5	49.7
11PM-MID	552	0.0	3000	552	0	0.36	0	70.0	63.7	49.7

+ INDICATES QUEUEING EXCEEDS USER-SPECIFIED MAXIMUM LIMIT

----- SITE BREAKDOWN DELAYS -----	
BREAKDOWN DURATION (MINS)	0
RANGE OF QUEUE DELAY - MIN (VEH-H) MAX	0.0
AV BREAKDOWNS PER DAY	0.00
AV QUEUE DELAY/DAY (VEH-H)	0.0
AV TOTAL DELAY/DAY (VEH-H)	0.0

----- SITE ACCIDENT DELAYS -----	
BREAKDOWN DURATION (MINS)	0
RANGE OF QUEUE DELAY - MIN (VEH-H) MAX	0
AV BREAKDOWNS PER DAY	0
AV QUEUE DELAY/DAY (VEH-H)	0
AV TOTAL DELAY/DAY (VEH-H)	0

AVERAGE ACCIDENT NUMBERS (PIA/DAY)	
MAIN ROUTE WITHOUT WORKS	0.0272
MAIN ROUTE WITH WORKS	0.0240
'DIVERSION'	0.0014
PIA: Personal Injury Accidents	
IMPACTS ON ROAD USERS	
ROAD USER COSTS PER DAY	\$80,235
CONGESTED HOURS PER DAY*	5

*Delays Exceeding User-Specified Maximum

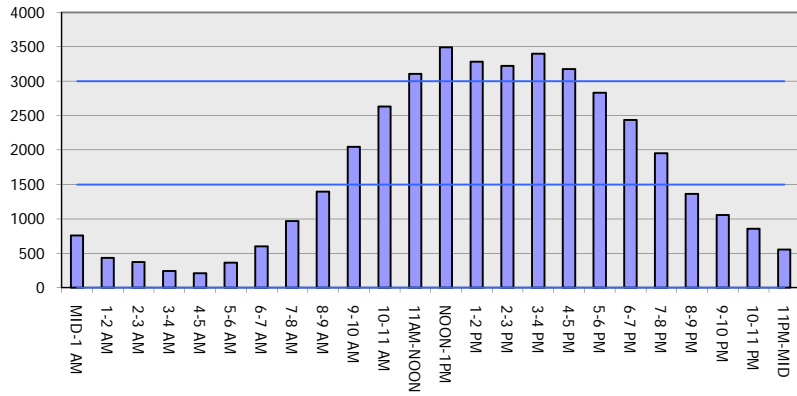
**IH 94: STH 16 TO USH 18 (WAUKESHA COUNTY)
CONTINUOUS (24 HOUR) CLOSURE
NO DIVERSION ROUTE (MAX QUEUE METHOD)**

OCTOBER
Analyzed for 2009
Construction Season

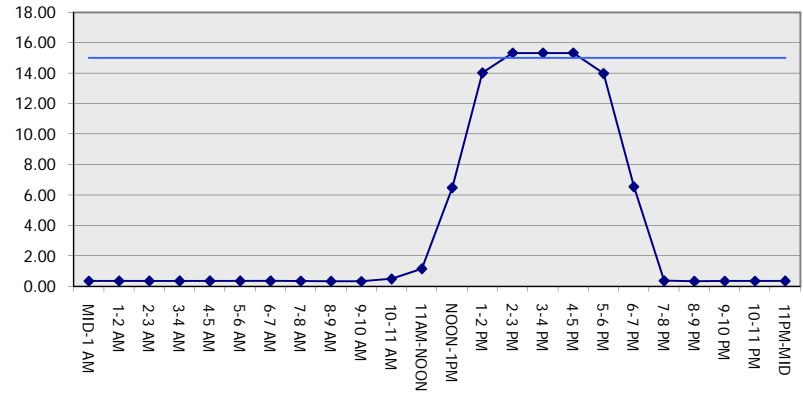
GRAPHICAL REPRESENTATION OF TRAFFIC MODEL INPUT AND OUTPUT

SUNDAY WESTBOUND DIRECTION

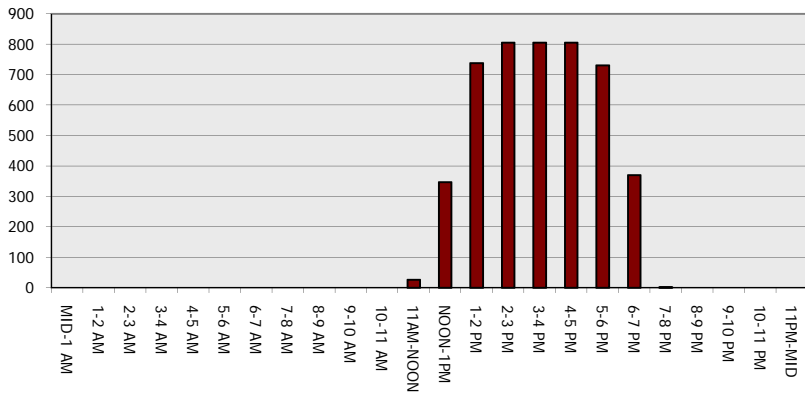
Main Route - Traffic Demand (Vehicles Per Hour)



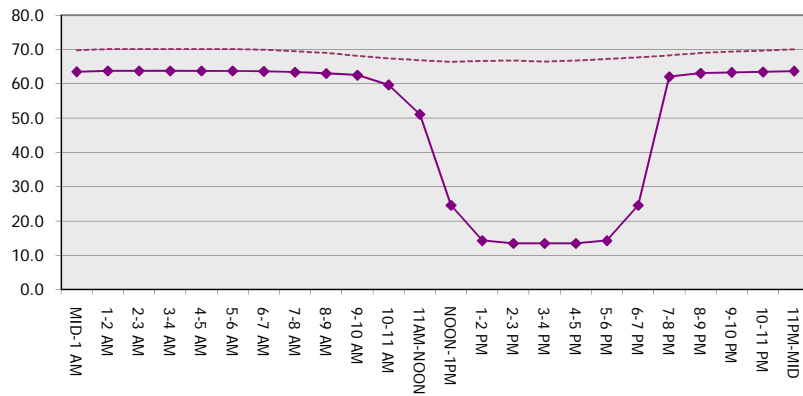
Main Route Average Delay Per Vehicle (Minutes)



Main Route - Average Queue Length (Vehicles)



Main Route - Average Speed (MPH)



IH 94: STH 16 TO USH 18 (WAUKESHA COUNTY) CONTINUOUS (24 HOUR) CLOSURE NO DIVERSION ROUTE (MAX QUEUE METHOD)	OCTOBER
	Analyzed for 2009 Construction Season

SUMMARY OF TRAFFIC MODEL OUTPUT

SUNDAY EASTBOUND DIRECTION

TIME OF DAY	FLOWS AND CAPACITY IN VEH/HR							AVERAGE SPEEDS IN MPH			
	MAIN ROUTE		SITE CAPA CITY	FLOW		AV.DEL PER VEH (MINS)	AVERAGE QUEUE (VEH)	MAIN ROUTE		SITE	
	DEMAND FLOW	PCT HEAVY		MAIN ROUTE	'DIVER TED'			WITHOUT WORK ZONE	WITH WORK ZONE		
MID-1 AM	709	0.0	3000	709	0	0.36	0	69.9	63.6	49.7	
1-2 AM	397	0.0	3000	397	0	0.36	0	70.2	63.8	49.7	
2-3 AM	286	0.0	3000	286	0	0.36	0	70.2	63.8	49.7	
3-4 AM	229	0.0	3000	229	0	0.36	0	70.2	63.8	49.7	
4-5 AM	257	0.0	3000	257	0	0.36	0	70.2	63.8	49.7	
5-6 AM	411	0.0	3000	411	0	0.36	0	70.2	63.8	49.7	
6-7 AM	657	0.0	3000	657	0	0.36	0	69.9	63.7	49.7	
7-8 AM	983	0.0	3000	983	0	0.35	0	69.5	63.4	49.7	
8-9 AM	1437	0.0	3000	1437	0	0.34	0	68.9	63.0	49.7	
9-10 AM	2234	0.0	2999	2234	0	0.34	0	67.9	62.2	49.2	
10-11 AM	2973	0.0	2999	2973	0	0.95	17	67.1	53.5	38.9	
11AM-NOON	3590	0.0	3000	3590	0	6.13	340	66.3	25.4	37.3	
NOON-1PM	3815	0.0	2999	3115	700	14.98+	793	64.8	13.5	37.3	
1-2 PM	3810	0.0	3000	3001	809	15.22+	805	64.8	13.4	37.3	
2-3 PM	3799	0.0	3000	3001	798	15.23+	805	64.9	13.4	37.3	
3-4 PM	3917	0.0	3000	3002	915	15.18+	805	64.1	13.4	37.3	
4-5 PM	3848	0.0	3000	3001	847	15.21+	805	64.6	13.4	37.3	
5-6 PM	3551	0.0	3000	3001	551	15.31+	805	66.3	13.4	37.3	
6-7 PM	3206	0.0	3000	3028	178	15.25+	801	66.8	13.4	37.3	
7-8 PM	2347	0.0	2999	2347	0	9.29+	528	67.8	19.4	40.4	
8-9 PM	1797	0.0	3000	1797	0	0.49	11	68.5	60.4	49.7	
9-10 PM	1295	0.0	3000	1295	0	0.35	0	69.1	63.2	49.7	
10-11 PM	879	0.0	3000	879	0	0.35	0	69.6	63.5	49.7	
11PM-MID	491	0.0	3000	491	0	0.36	0	70.1	63.8	49.7	

+ INDICATES QUEUEING EXCEEDS USER-SPECIFIED MAXIMUM LIMIT

----- SITE BREAKDOWN DELAYS -----	
BREAKDOWN DURATION (MINS)	0
RANGE OF QUEUE DELAY - MIN (VEH-H) MAX	0.0
AV BREAKDOWNS PER DAY	0.00
AV QUEUE DELAY/DAY (VEH-H)	0.0
AV TOTAL DELAY/DAY (VEH-H)	0.0

----- SITE ACCIDENT DELAYS -----	
BREAKDOWN DURATION (MINS)	0
RANGE OF QUEUE DELAY - MIN (VEH-H) MAX	0
AV BREAKDOWNS PER DAY	0
AV QUEUE DELAY/DAY (VEH-H)	0
AV TOTAL DELAY/DAY (VEH-H)	0

AVERAGE ACCIDENT NUMBERS (PIA/DAY)	
MAIN ROUTE WITHOUT WORKS	0.0314
MAIN ROUTE WITH WORKS	0.0254
'DIVERSION'	0.0074

PIA: Personal Injury Accidents

ECONOMIC IMPACT ON ROAD USERS	
ROAD USER COSTS PER DAY	\$125,854
CONGESTED HOURS PER DAY*	8

*Delays Exceeding User-Specified Maximum

**IH 94: STH 16 TO USH 18 (WAUKESHA COUNTY)
CONTINUOUS (24 HOUR) CLOSURE
NO DIVERSION ROUTE (MAX QUEUE METHOD)**

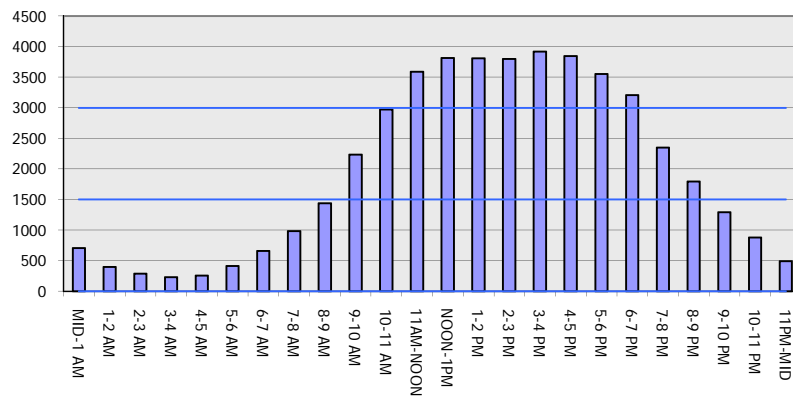
OCTOBER

Analyzed for 2009
Construction Season

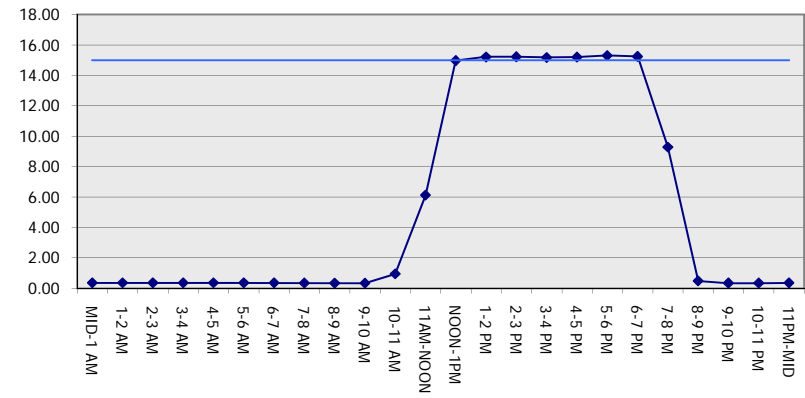
GRAPHICAL REPRESENTATION OF TRAFFIC MODEL INPUT AND OUTPUT

SUNDAY EASTBOUND DIRECTION

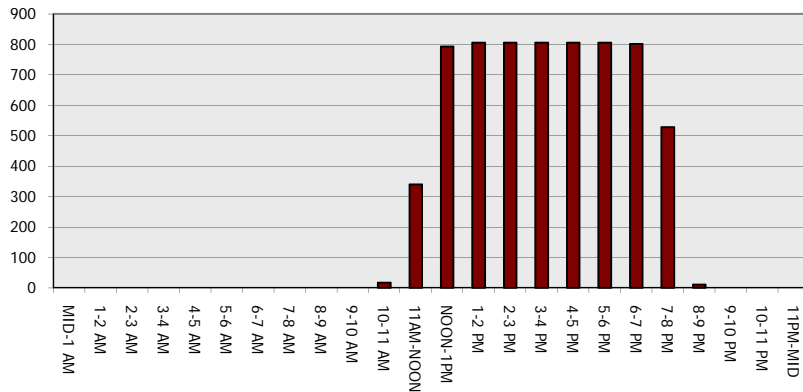
Main Route - Traffic Demand (Vehicles Per Hour)



Main Route Average Delay Per Vehicle (Minutes)



Main Route - Average Queue Length (Vehicles)



Main Route - Average Speed (MPH)

