

IH 94: STH 16 TO USH 18 (WAUKESHA COUNTY) CONTINUOUS (24 HOUR) CLOSURE NO DIVERSION ROUTE (MAX QUEUE METHOD)	OCTOBER
	Analyzed for 2009 Construction Season

SUMMARY OF TRAFFIC MODEL OUTPUT

FRIDAY WESTBOUND DIRECTION

TIME OF DAY	FLOWS AND CAPACITY IN VEH/HR							AVERAGE SPEEDS IN MPH			
	MAIN ROUTE		SITE CAPA CITY	FLOW		AV.DEL PER VEH (MINS)	AVERAGE QUEUE (VEH)	MAIN ROUTE		SITE	
	DEMAND FLOW	PCT HEAVY		MAIN ROUTE	'DIVER TED'			WITHOUT WORK ZONE	WITH WORK ZONE		
MID-1 AM	554	0.0	3000	554	0	0.36	0	70.0	63.7	49.7	
1-2 AM	344	0.0	3000	344	0	0.36	0	70.2	63.8	49.7	
2-3 AM	285	0.0	3000	285	0	0.36	0	70.2	63.8	49.7	
3-4 AM	286	0.0	3000	286	0	0.36	0	70.2	63.8	49.7	
4-5 AM	492	0.0	3000	492	0	0.36	0	70.1	63.8	49.7	
5-6 AM	1171	0.0	3000	1171	0	0.35	0	69.3	63.2	49.7	
6-7 AM	2688	0.0	2999	2688	0	0.61	6	67.4	57.9	43.5	
7-8 AM	4058	0.0	3000	3913	145	7.98+	492	63.2	21.1	37.3	
8-9 AM	3844	0.0	3000	2923	921	15.11+	800	64.6	13.4	37.3	
9-10 AM	3138	0.0	2999	2937	201	15.20+	798	66.8	13.4	37.3	
10-11 AM	3319	0.0	3000	3000	318	15.32+	805	66.6	13.4	37.3	
11AM-NOON	3717	0.0	3000	3000	717	15.26+	805	65.5	13.4	37.3	
NOON-1PM	4123	0.0	3000	3002	1121	15.10+	806	62.7	13.4	37.3	
1-2 PM	4411	0.0	3000	3003	1408	14.99+	807	60.7	13.4	37.3	
2-3 PM	4929	0.0	3000	3000	1929	14.76+	809	57.2	13.4	37.3	
3-4 PM	5815	0.0	3000	3000	2815	14.23+	809	51.1	13.4	37.3	
4-5 PM	6103	0.0	3000	3000	3103	14.03+	809	49.2	13.4	37.3	
5-6 PM	5945	0.0	3000	3000	2945	14.14+	809	50.2	13.4	37.3	
6-7 PM	4554	0.0	3000	3001	1553	14.92+	808	59.7	13.4	37.3	
7-8 PM	2991	0.0	3000	2860	131	14.66+	769	67.0	13.8	37.3	
8-9 PM	2387	0.0	2999	2387	0	6.58	380	67.8	24.5	40.6	
9-10 PM	2256	0.0	3000	2256	0	0.36	1	67.9	61.9	49.7	
10-11 PM	1739	0.0	3000	1739	0	0.34	0	68.6	62.8	49.7	
11PM-MID	1187	0.0	3000	1187	0	0.35	0	69.2	63.2	49.7	

+ INDICATES QUEUEING EXCEEDS USER-SPECIFIED MAXIMUM LIMIT

----- SITE BREAKDOWN DELAYS -----	
BREAKDOWN DURATION (MINS)	0
RANGE OF QUEUE DELAY - MIN (VEH-H) MAX	0.0
AV BREAKDOWNS PER DAY	0.00
AV QUEUE DELAY/DAY (VEH-H)	0.0
AV TOTAL DELAY/DAY (VEH-H)	0.0

----- SITE ACCIDENT DELAYS -----	
BREAKDOWN DURATION (MINS)	0
RANGE OF QUEUE DELAY - MIN (VEH-H) MAX	0
AV BREAKDOWNS PER DAY	0
AV QUEUE DELAY/DAY (VEH-H)	0
AV TOTAL DELAY/DAY (VEH-H)	0

AVERAGE ACCIDENT NUMBERS (PIA/DAY)	
MAIN ROUTE WITHOUT WORKS	0.0470
MAIN ROUTE WITH WORKS	0.0319
'DIVERSION'	0.0268
PIA: Personal Injury Accidents	
IMPACTS ON ROAD USERS	
ROAD USER COSTS PER DAY	\$187,482
CONGESTED HOURS PER DAY*	13

*Delays Exceeding User-Specified Maximum

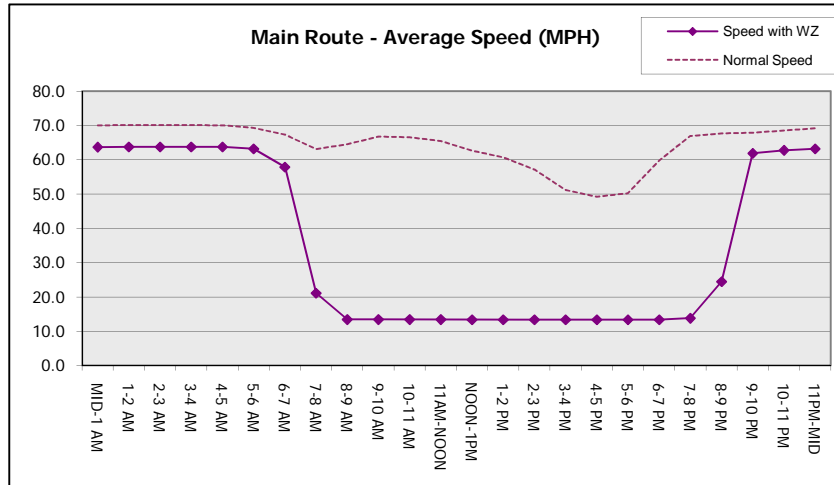
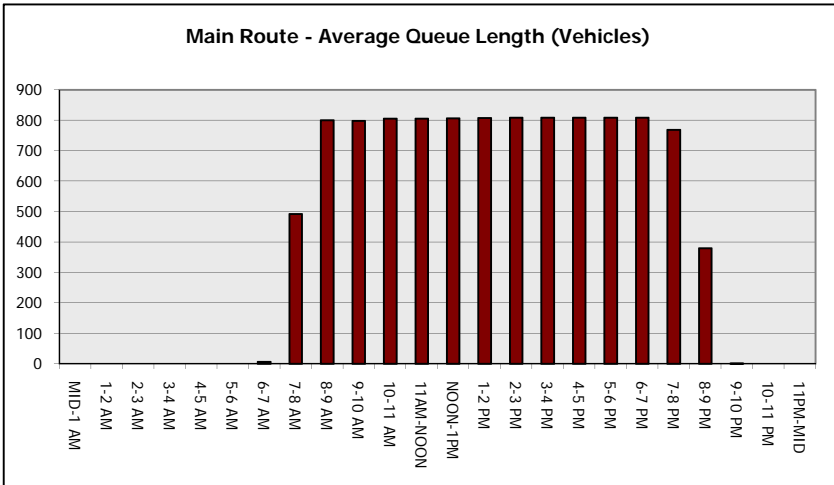
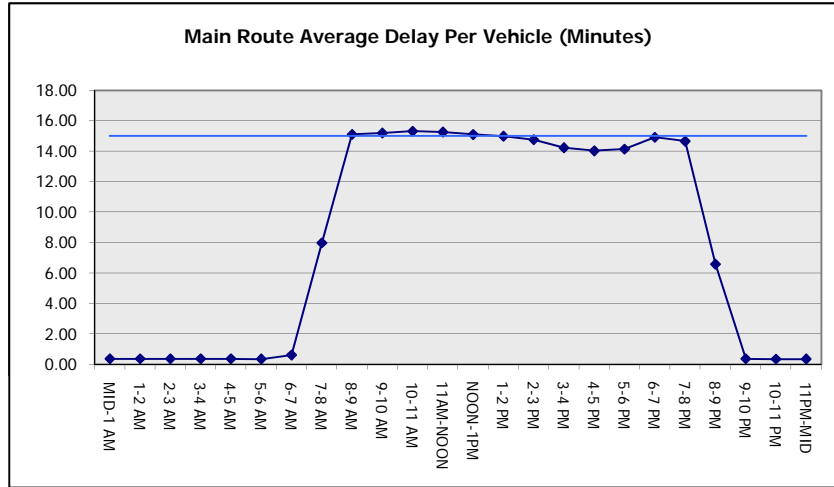
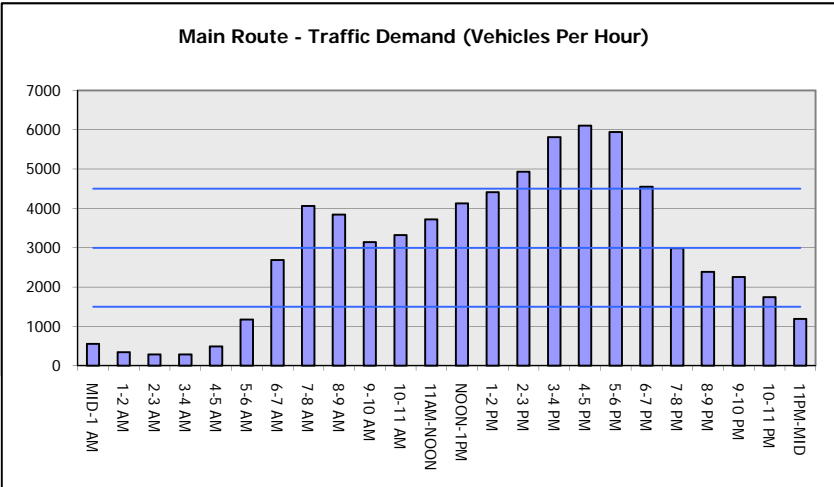
**IH 94: STH 16 TO USH 18 (WAUKESHA COUNTY)
CONTINUOUS (24 HOUR) CLOSURE
NO DIVERSION ROUTE (MAX QUEUE METHOD)**

OCTOBER

Analyzed for 2009
Construction Season

GRAPHICAL REPRESENTATION OF TRAFFIC MODEL INPUT AND OUTPUT

FRIDAY WESTBOUND DIRECTION



IH 94: STH 16 TO USH 18 (WAUKESHA COUNTY) CONTINUOUS (24 HOUR) CLOSURE NO DIVERSION ROUTE (MAX QUEUE METHOD)	OCTOBER
	Analyzed for 2009 Construction Season

SUMMARY OF TRAFFIC MODEL OUTPUT

FRIDAY EASTBOUND DIRECTION

TIME OF DAY	FLOWS AND CAPACITY IN VEH/HR							AVERAGE SPEEDS IN MPH		
	MAIN ROUTE		SITE CAPA CITY	FLOW		AV.DEL PER VEH (MINS)	AVERAGE QUEUE (VEH)	MAIN ROUTE		SITE
	DEMAND FLOW	PCT HEAVY		MAIN ROUTE	'DIVER TED'			WITHOUT WORK ZONE	WITH WORK ZONE	
MID-1 AM	331	0.0	3000	331	0	0.36	0	70.2	63.8	49.7
1-2 AM	243	0.0	3000	243	0	0.36	0	70.2	63.8	49.7
2-3 AM	243	0.0	3000	243	0	0.36	0	70.2	63.8	49.7
3-4 AM	305	0.0	3000	305	0	0.36	0	70.2	63.8	49.7
4-5 AM	652	0.0	3000	652	0	0.36	0	69.9	63.7	49.7
5-6 AM	1994	0.0	2999	1994	0	0.37	0	68.2	62.0	48.3
6-7 AM	4689	0.0	2999	3639	1050	9.10+	561	58.8	18.9	38.2
7-8 AM	5403	0.0	3000	3015	2388	14.40+	807	54.0	13.4	38.6
8-9 AM	4500	0.0	3000	3023	1478	14.92+	807	60.1	13.4	37.6
9-10 AM	3516	0.0	3000	3109	407	15.08+	793	66.4	13.5	37.3
10-11 AM	3354	0.0	3000	3001	353	15.32+	805	66.6	13.4	37.3
11AM-NOON	3704	0.0	3000	3001	703	15.26+	805	65.6	13.4	37.3
NOON-1PM	3746	0.0	3000	3001	745	15.25+	805	65.3	13.4	37.3
1-2 PM	3695	0.0	3000	3001	695	15.27+	805	65.6	13.4	37.3
2-3 PM	4001	0.0	3000	3002	999	15.15+	806	63.5	13.4	37.3
3-4 PM	4665	0.0	3000	3003	1662	14.89+	809	59.0	13.4	37.3
4-5 PM	4896	0.0	3000	3000	1896	14.78+	809	57.4	13.4	37.3
5-6 PM	4681	0.0	3000	3003	1678	14.88+	809	58.9	13.4	37.3
6-7 PM	3725	0.0	3000	3000	725	15.26+	805	65.4	13.4	37.3
7-8 PM	2492	0.0	2999	2492	0	11.07+	600	67.6	17.0	38.6
8-9 PM	1906	0.0	3000	1906	0	0.83	41	68.4	55.8	49.7
9-10 PM	1751	0.0	3000	1751	0	0.34	0	68.6	62.8	49.7
10-11 PM	1410	0.0	3000	1410	0	0.34	0	69.0	63.0	49.7
11PM-MID	992	0.0	3000	992	0	0.35	0	69.5	63.3	49.7

+ INDICATES QUEUEING EXCEEDS USER-SPECIFIED MAXIMUM LIMIT

BREAKDOWN DURATION (MINS)	0
RANGE OF QUEUE DELAY - MIN (VEH-H) MAX	0.0
AV BREAKDOWNS PER DAY	0.00
AV QUEUE DELAY/DAY (VEH-H)	0.0
AV TOTAL DELAY/DAY (VEH-H)	0.0

BREAKDOWN DURATION (MINS)	0
RANGE OF QUEUE DELAY - MIN (VEH-H) MAX	0
AV BREAKDOWNS PER DAY	0
AV QUEUE DELAY/DAY (VEH-H)	0
AV TOTAL DELAY/DAY (VEH-H)	0

MAIN ROUTE WITHOUT WORKS	0.0447
MAIN ROUTE WITH WORKS	0.0314
'DIVERSION'	0.0229

PIA: Personal Injury Accidents

ROAD USER COSTS PER DAY	\$185,593
CONGESTED HOURS PER DAY*	14

*Delays Exceeding User-Specified Maximum

**IH 94: STH 16 TO USH 18 (WAUKESHA COUNTY)
CONTINUOUS (24 HOUR) CLOSURE
NO DIVERSION ROUTE (MAX QUEUE METHOD)**

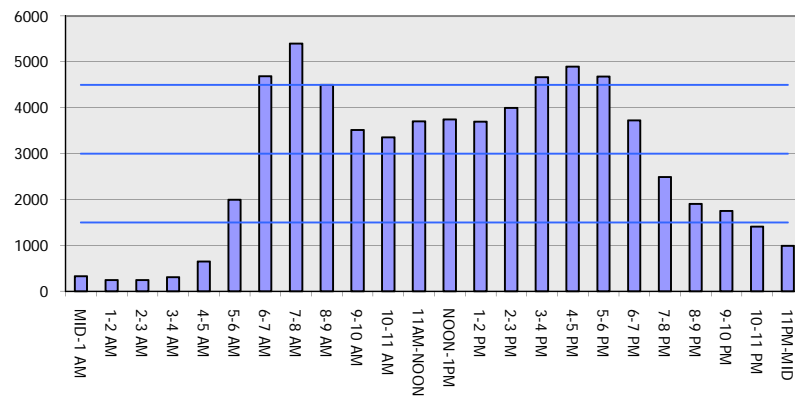
OCTOBER

Analyzed for 2009
Construction Season

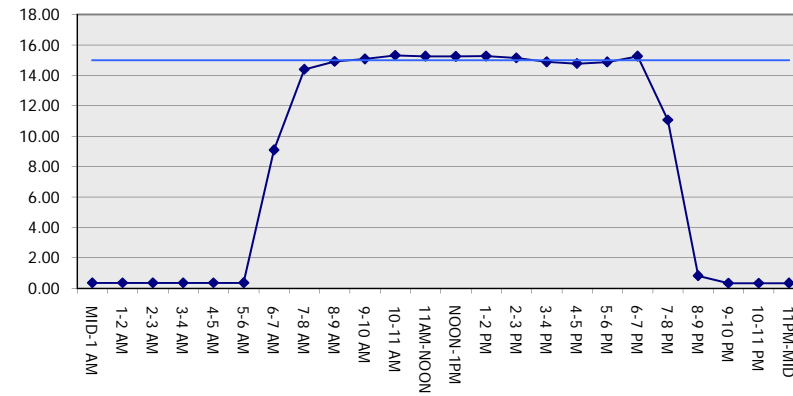
GRAPHICAL REPRESENTATION OF TRAFFIC MODEL INPUT AND OUTPUT

FRIDAY EASTBOUND DIRECTION

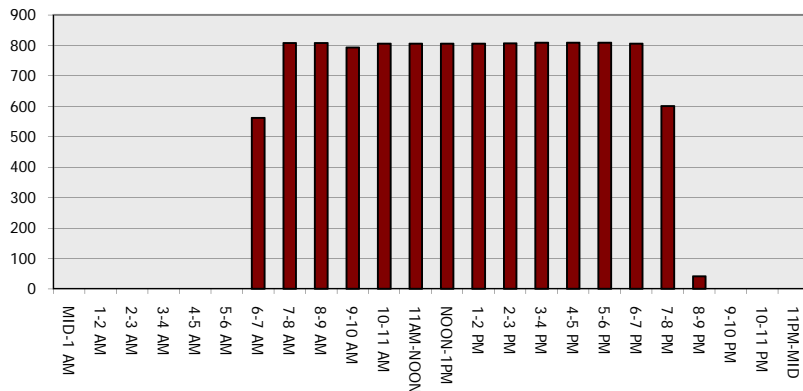
Main Route - Traffic Demand (Vehicles Per Hour)



Main Route Average Delay Per Vehicle (Minutes)



Main Route - Average Queue Length (Vehicles)



Main Route - Average Speed (MPH)

