

<b>IH 94: STH 16 TO USH 18 (WAUKESHA COUNTY)                  CONTINUOUS (24 HOUR) CLOSURE                  NO DIVERSION ROUTE (MAX QUEUE METHOD)</b>	<b>AUGUST</b>
	Analyzed for 2009 Construction Season

**SUMMARY OF TRAFFIC MODEL OUTPUT**

SATURDAY WESTBOUND DIRECTION

TIME OF DAY	FLOWS AND CAPACITY IN VEH/HR						AVERAGE SPEEDS IN MPH				
	MAIN ROUTE		SITE CAPA CITY	FLOW		AV.DEL PER VEH (MINS)	AVERAGE QUEUE (VEH)	MAIN ROUTE		SITE	
	DEMAND FLOW	PCT HEAVY		MAIN ROUTE	'DIVER TED'			WITHOUT WORK ZONE	WITH WORK ZONE		
MID-1 AM	1003	0.0	3000	1003	0	0.35	0	69.5	63.3	49.7	
1-2 AM	516	0.0	3000	516	0	0.36	0	70.1	63.7	49.7	
2-3 AM	399	0.0	3000	399	0	0.36	0	70.2	63.8	49.7	
3-4 AM	316	0.0	3000	316	0	0.36	0	70.2	63.8	49.7	
4-5 AM	367	0.0	3000	367	0	0.36	0	70.2	63.8	49.7	
5-6 AM	670	0.0	3000	670	0	0.36	0	69.9	63.6	49.7	
6-7 AM	1246	0.0	3000	1246	0	0.35	0	69.2	63.2	49.7	
7-8 AM	1679	0.0	3000	1679	0	0.34	0	68.6	62.8	49.7	
8-9 AM	2210	0.0	3000	2210	0	0.33	0	68.0	62.4	49.7	
9-10 AM	2463	0.0	3000	2463	0	0.38	0	67.7	61.4	47.7	
10-11 AM	2774	0.0	2999	2774	0	0.58	0	67.3	58.2	41.0	
11AM-NOON	3041	0.0	2999	3041	0	0.93	12	66.9	53.7	37.4	
NOON-1PM	3243	0.0	3000	3243	0	3.55	165	66.7	34.4	37.3	
1-2 PM	3213	0.0	2999	3213	0	7.91	401	66.8	21.5	37.3	
2-3 PM	3151	0.0	2999	3151	0	11.20	579	66.8	16.8	37.3	
3-4 PM	3231	0.0	3000	3126	105	14.50+	762	66.7	13.9	37.3	
4-5 PM	2986	0.0	3000	2978	8	15.09+	791	67.0	13.5	37.3	
5-6 PM	2552	0.0	2999	2552	0	10.49	557	67.6	17.7	37.5	
6-7 PM	2306	0.0	3000	2306	0	1.29	73	67.9	50.4	47.3	
7-8 PM	2330	0.0	3000	2330	0	0.33	0	67.8	62.3	49.7	
8-9 PM	2098	0.0	3000	2098	0	0.33	0	68.1	62.5	49.7	
9-10 PM	2270	0.0	3000	2270	0	0.33	0	67.9	62.3	49.7	
10-11 PM	1793	0.0	3000	1793	0	0.34	0	68.5	62.7	49.7	
11PM-MID	1210	0.0	3000	1210	0	0.35	0	69.2	63.2	49.7	

+ INDICATES QUEUEING EXCEEDS USER-SPECIFIED MAXIMUM LIMIT

*----- SITE BREAKDOWN DELAYS -----*	
BREAKDOWN DURATION (MINS)	0
RANGE OF QUEUE DELAY - MIN (VEH-H) MAX	0.0
AV BREAKDOWNS PER DAY	0.00
AV QUEUE DELAY/DAY (VEH-H)	0.0
AV TOTAL DELAY/DAY (VEH-H)	0.0

*----- SITE ACCIDENT DELAYS -----*	
BREAKDOWN DURATION (MINS)	0
RANGE OF QUEUE DELAY - MIN (VEH-H) MAX	0
AV BREAKDOWNS PER DAY	0
AV QUEUE DELAY/DAY (VEH-H)	0
AV TOTAL DELAY/DAY (VEH-H)	0

AVERAGE ACCIDENT NUMBERS (PIA/DAY)	
MAIN ROUTE WITHOUT WORKS	0.0315
MAIN ROUTE WITH WORKS	0.0283
'DIVERSION'	0.0002
PIA: Personal Injury Accidents	
IMPACTS ON ROAD USERS	
ROAD USER COSTS PER DAY	\$57,438
CONGESTED HOURS PER DAY*	2

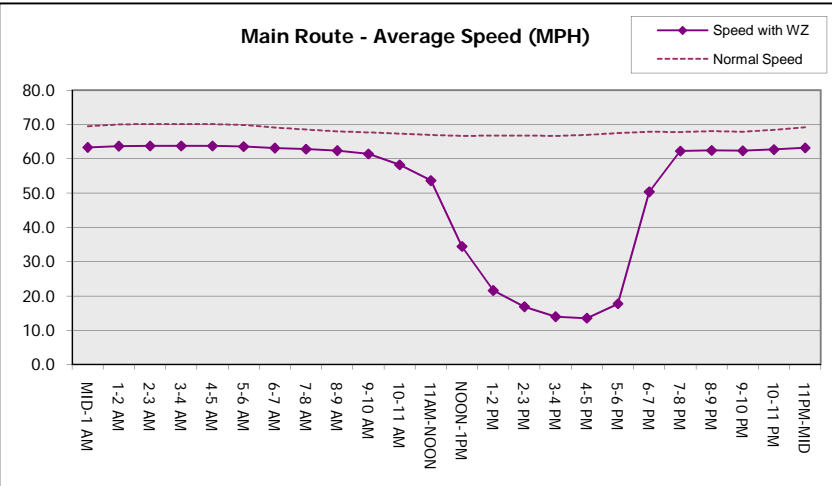
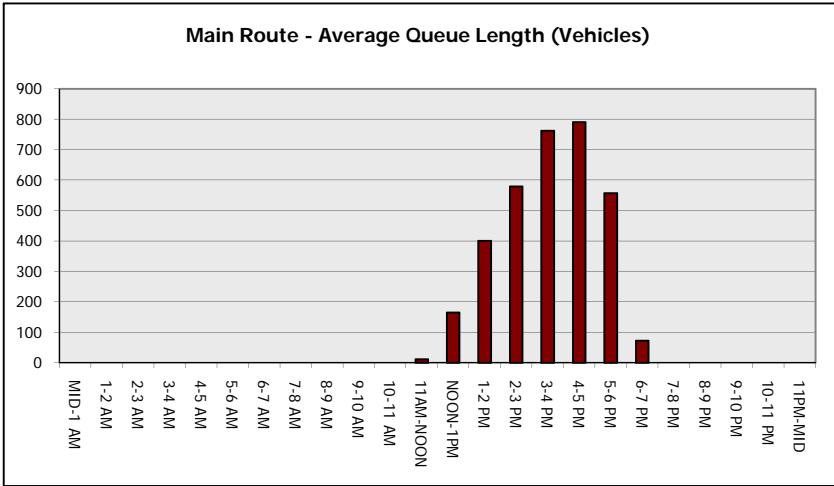
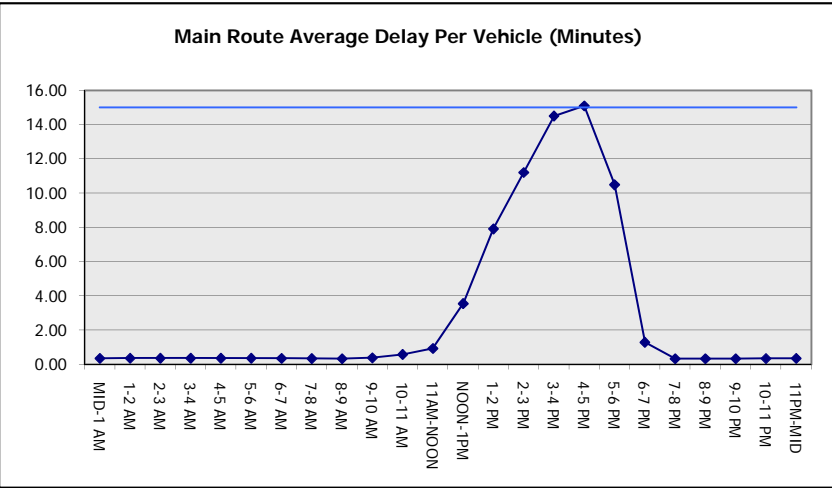
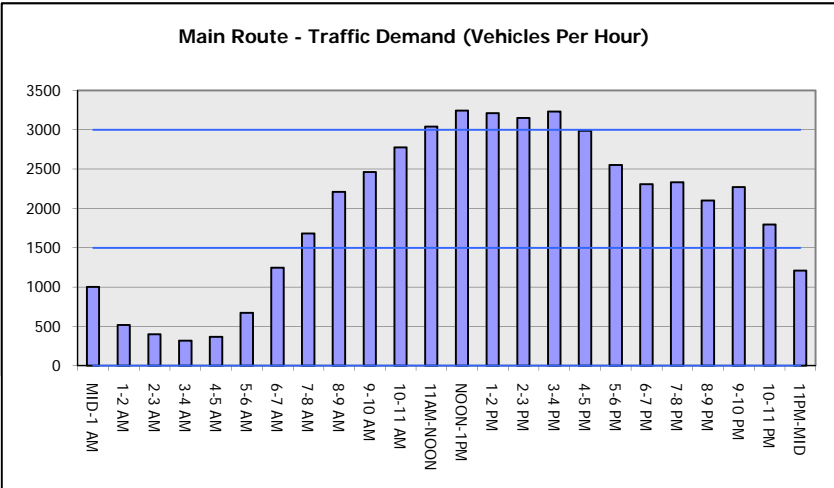
\*Delays Exceeding User-Specified Maximum

**IH 94: STH 16 TO USH 18 (WAUKESHA COUNTY)  
CONTINUOUS (24 HOUR) CLOSURE  
NO DIVERSION ROUTE (MAX QUEUE METHOD)**

**AUGUST**  
Analyzed for 2009  
Construction Season

**GRAPHICAL REPRESENTATION OF TRAFFIC MODEL INPUT AND OUTPUT**

**SATURDAY WESTBOUND DIRECTION**



<b>IH 94: STH 16 TO USH 18 (WAUKESHA COUNTY)</b> <b>CONTINUOUS (24 HOUR) CLOSURE</b> <b>NO DIVERSION ROUTE (MAX QUEUE METHOD)</b>	<b>AUGUST</b>
	Analyzed for 2009 Construction Season

**SUMMARY OF TRAFFIC MODEL OUTPUT**

SATURDAY EASTBOUND DIRECTION

TIME OF DAY	FLOWS AND CAPACITY IN VEH/HR							AVERAGE SPEEDS IN MPH		
	MAIN ROUTE		SITE CAPA CITY	FLOW		AV.DEL PER VEH (MINS)	AVERAGE QUEUE (VEH)	MAIN ROUTE		SITE
	DEMAND FLOW	PCT HEAVY		MAIN ROUTE	'DIVER TED'			WITHOUT WORK ZONE	WITH WORK ZONE	
MID-1 AM	605	0.0	3000	605	0	0.36	0	70.0	63.7	49.7
1-2 AM	364	0.0	3000	364	0	0.36	0	70.2	63.8	49.7
2-3 AM	277	0.0	3000	277	0	0.36	0	70.2	63.8	49.7
3-4 AM	271	0.0	3000	271	0	0.36	0	70.2	63.8	49.7
4-5 AM	402	0.0	3000	402	0	0.36	0	70.2	63.8	49.7
5-6 AM	711	0.0	3000	711	0	0.36	0	69.9	63.6	49.7
6-7 AM	1113	0.0	3000	1113	0	0.35	0	69.4	63.3	49.7
7-8 AM	1652	0.0	3000	1652	0	0.34	0	68.7	62.8	49.7
8-9 AM	2419	0.0	2999	2419	0	0.39	0	67.8	61.2	47.3
9-10 AM	2977	0.0	2999	2977	0	0.92	14	67.0	53.9	38.6
10-11 AM	3545	0.0	3000	3545	0	5.48	300	66.3	27.1	37.3
11AM-NOON	3978	0.0	2999	3216	762	14.73+	784	63.7	13.7	37.3
NOON-1PM	3933	0.0	3000	2999	934	15.17+	805	64.0	13.4	37.3
1-2 PM	4029	0.0	3000	2999	1030	15.13+	805	63.3	13.4	37.3
2-3 PM	4084	0.0	2999	2998	1086	15.11+	806	63.0	13.4	37.3
3-4 PM	3960	0.0	2999	3000	961	15.16+	805	63.8	13.4	37.3
4-5 PM	3910	0.0	3000	3000	910	15.18+	805	64.1	13.4	37.3
5-6 PM	3473	0.0	3000	3000	474	15.31+	805	66.4	13.4	37.3
6-7 PM	3002	0.0	3000	2930	71	15.11+	792	67.0	13.5	37.3
7-8 PM	2347	0.0	2999	2347	0	7.70	444	67.8	22.0	40.6
8-9 PM	2197	0.0	3000	2197	0	0.42	5	68.0	61.1	49.7
9-10 PM	1949	0.0	3000	1949	0	0.34	0	68.3	62.6	49.7
10-11 PM	1615	0.0	3000	1615	0	0.34	0	68.7	62.9	49.7
11PM-MID	1100	0.0	3000	1100	0	0.35	0	69.4	63.3	49.7

+ INDICATES QUEUEING EXCEEDS USER-SPECIFIED MAXIMUM LIMIT

*----- SITE BREAKDOWN DELAYS -----*	
BREAKDOWN DURATION (MINS)	0
RANGE OF QUEUE DELAY - MIN (VEH-H) MAX	0.0
AV BREAKDOWNS PER DAY	0.00
AV QUEUE DELAY/DAY (VEH-H)	0.0
AV TOTAL DELAY/DAY (VEH-H)	0.0

*----- SITE ACCIDENT DELAYS -----*	
BREAKDOWN DURATION (MINS)	0
RANGE OF QUEUE DELAY - MIN (VEH-H) MAX	0
AV BREAKDOWNS PER DAY	0
AV QUEUE DELAY/DAY (VEH-H)	0
AV TOTAL DELAY/DAY (VEH-H)	0

AVERAGE ACCIDENT NUMBERS (PIA/DAY)	
MAIN ROUTE WITHOUT WORKS	0.0360
MAIN ROUTE WITH WORKS	0.0287
'DIVERSION'	0.0096

PIA: Personal Injury Accidents

ECONOMIC IMPACT ON ROAD USERS	
ROAD USER COSTS PER DAY	\$141,068
CONGESTED HOURS PER DAY*	8

\*Delays Exceeding User-Specified Maximum

**IH 94: STH 16 TO USH 18 (WAUKESHA COUNTY)  
CONTINUOUS (24 HOUR) CLOSURE  
NO DIVERSION ROUTE (MAX QUEUE METHOD)**

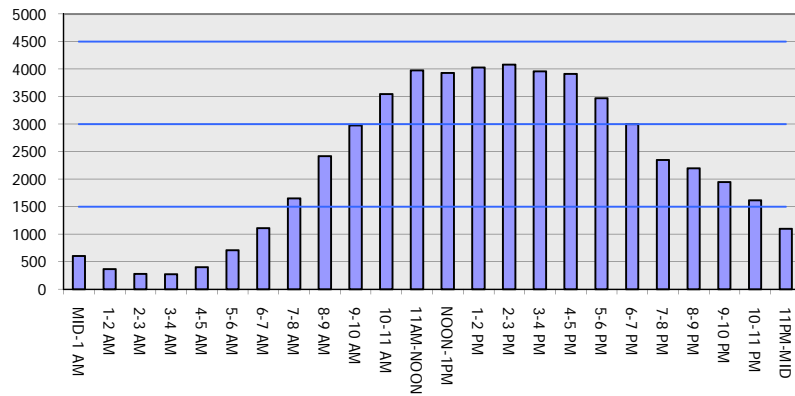
**AUGUST**

Analyzed for 2009  
Construction Season

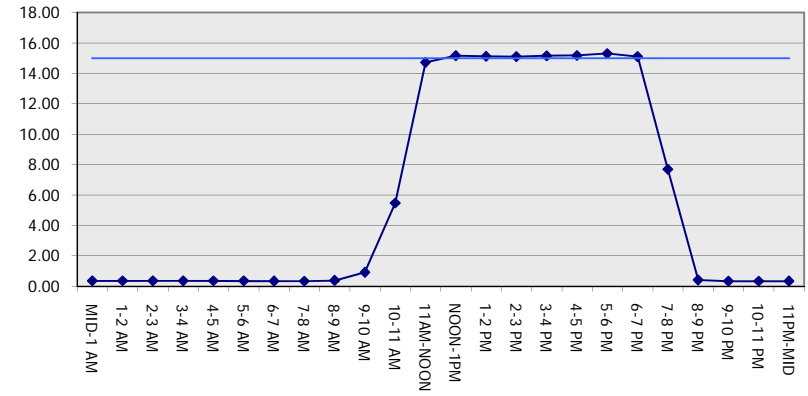
**GRAPHICAL REPRESENTATION OF TRAFFIC MODEL INPUT AND OUTPUT**

**SATURDAY EASTBOUND DIRECTION**

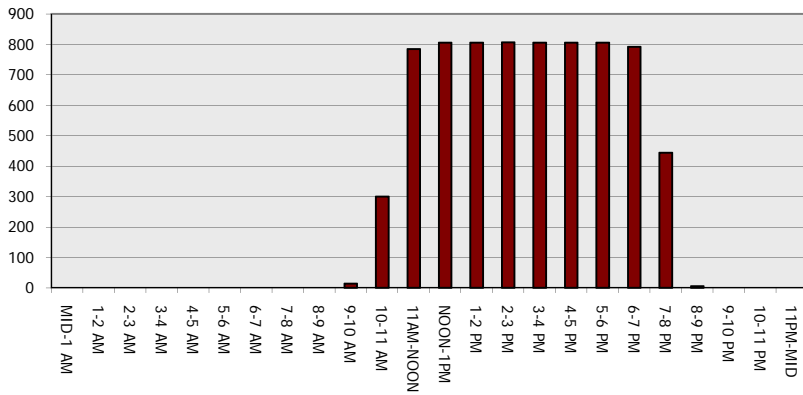
**Main Route - Traffic Demand (Vehicles Per Hour)**



**Main Route Average Delay Per Vehicle (Minutes)**



**Main Route - Average Queue Length (Vehicles)**



**Main Route - Average Speed (MPH)**

