

IH 94: STH 16 TO USH 18 (WAUKESHA COUNTY) CONTINUOUS (24 HOUR) CLOSURE NO DIVERSION ROUTE (MAX QUEUE METHOD)	AUGUST
	Analyzed for 2009 Construction Season

SUMMARY OF TRAFFIC MODEL OUTPUT

MON-THUR WESTBOUND DIRECTION

TIME OF DAY	FLOWS AND CAPACITY IN VEH/HR							AVERAGE SPEEDS IN MPH			
	MAIN ROUTE		SITE CAPA CITY	FLOW		AV.DEL PER VEH (MINS)	AVERAGE QUEUE (VEH)	MAIN ROUTE		SITE	
	DEMAND FLOW	PCT HEAVY		MAIN ROUTE	'DIVER TED'			WITHOUT WORK ZONE	WITH WORK ZONE		
MID-1 AM	537	0.0	3000	537	0	0.36	0	70.0	63.7	49.7	
1-2 AM	315	0.0	3000	315	0	0.36	0	70.2	63.8	49.7	
2-3 AM	244	0.0	3000	244	0	0.36	0	70.2	63.8	49.7	
3-4 AM	270	0.0	3000	270	0	0.36	0	70.2	63.8	49.7	
4-5 AM	455	0.0	3000	455	0	0.36	0	70.2	63.8	49.7	
5-6 AM	1108	0.0	3000	1108	0	0.35	0	69.4	63.3	49.7	
6-7 AM	2341	0.0	2999	2341	0	0.41	0	67.8	61.2	46.9	
7-8 AM	3351	0.0	2999	3351	0	3.12	152	66.6	36.5	37.3	
8-9 AM	3073	0.0	2999	3073	0	8.25	415	66.9	21.0	37.3	
9-10 AM	2440	0.0	2999	2440	0	2.78	177	67.7	38.8	43.4	
10-11 AM	2446	0.0	3000	2446	0	0.37	0	67.7	61.6	48.1	
11AM-NOON	2677	0.0	3000	2677	0	0.52	0	67.4	59.2	42.9	
NOON-1PM	2875	0.0	2999	2875	0	0.65	0	67.1	57.3	39.2	
1-2 PM	2962	0.0	2999	2962	0	0.74	2	67.1	56.1	38.0	
2-3 PM	3330	0.0	3000	3330	0	2.96	142	66.6	37.3	37.3	
3-4 PM	3985	0.0	3000	3429	556	12.42+	679	63.7	15.5	37.3	
4-5 PM	4421	0.0	3000	3013	1408	14.99+	807	60.7	13.4	37.3	
5-6 PM	4438	0.0	3000	3008	1430	14.98+	807	60.5	13.4	37.3	
6-7 PM	3320	0.0	3000	3015	305	15.29+	803	66.6	13.4	37.3	
7-8 PM	2399	0.0	2999	2399	0	9.73+	540	67.8	18.8	39.5	
8-9 PM	2120	0.0	3000	2120	0	0.66	25	68.1	57.8	49.7	
9-10 PM	1875	0.0	3000	1875	0	0.34	0	68.4	62.7	49.7	
10-11 PM	1461	0.0	3000	1461	0	0.34	0	68.9	63.0	49.7	
11PM-MID	1006	0.0	3000	1006	0	0.35	0	69.5	63.3	49.7	

+ INDICATES QUEUEING EXCEEDS USER-SPECIFIED MAXIMUM LIMIT

----- SITE BREAKDOWN DELAYS -----	
BREAKDOWN DURATION (MINS)	0
RANGE OF QUEUE DELAY - MIN (VEH-H) MAX	0.0
AV BREAKDOWNS PER DAY	0.00
AV QUEUE DELAY/DAY (VEH-H)	0.0
AV TOTAL DELAY/DAY (VEH-H)	0.0

----- SITE ACCIDENT DELAYS -----	
BREAKDOWN DURATION (MINS)	0
RANGE OF QUEUE DELAY - MIN (VEH-H) MAX	0
AV BREAKDOWNS PER DAY	0
AV QUEUE DELAY/DAY (VEH-H)	0
AV TOTAL DELAY/DAY (VEH-H)	0

AVERAGE ACCIDENT NUMBERS (PIA/DAY)	
MAIN ROUTE WITHOUT WORKS	0.0357
MAIN ROUTE WITH WORKS	0.0300
'DIVERSION'	0.0057
PIA: Personal Injury Accidents	
IMPACTS ON ROAD USERS	
ROAD USER COSTS PER DAY	\$69,944
CONGESTED HOURS PER DAY*	5

*Delays Exceeding User-Specified Maximum

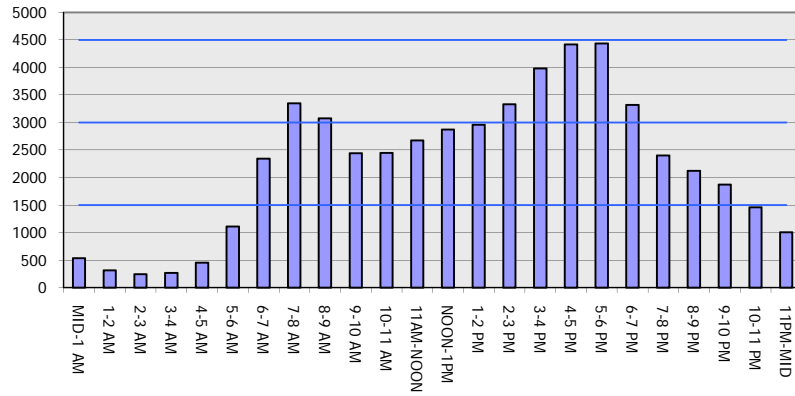
**IH 94: STH 16 TO USH 18 (WAUKESHA COUNTY)
CONTINUOUS (24 HOUR) CLOSURE
NO DIVERSION ROUTE (MAX QUEUE METHOD)**

AUGUST
Analyzed for 2009
Construction Season

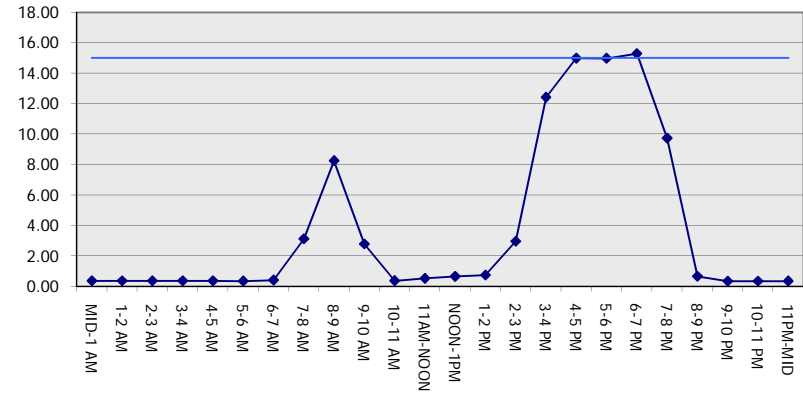
GRAPHICAL REPRESENTATION OF TRAFFIC MODEL INPUT AND OUTPUT

MON-THUR WESTBOUND DIRECTION

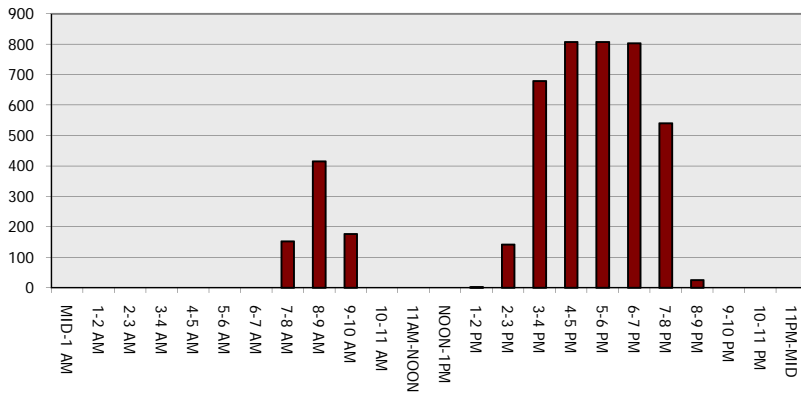
Main Route - Traffic Demand (Vehicles Per Hour)



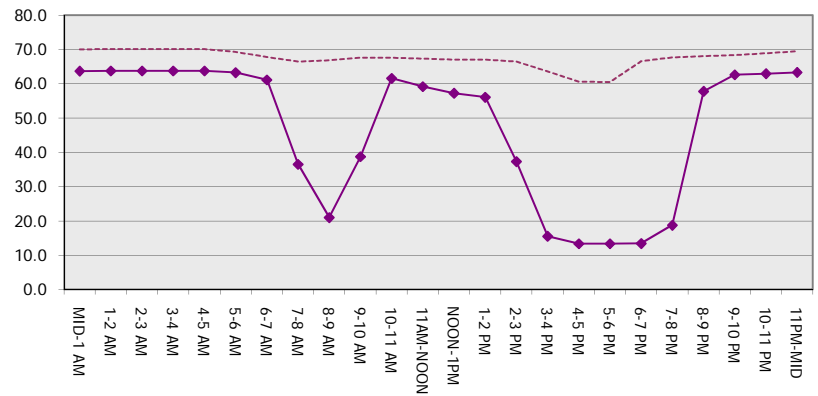
Main Route Average Delay Per Vehicle (Minutes)



Main Route - Average Queue Length (Vehicles)



Main Route - Average Speed (MPH)



IH 94: STH 16 TO USH 18 (WAUKESHA COUNTY) CONTINUOUS (24 HOUR) CLOSURE NO DIVERSION ROUTE (MAX QUEUE METHOD)	AUGUST
	Analyzed for 2009 Construction Season

SUMMARY OF TRAFFIC MODEL OUTPUT

MON-THUR EASTBOUND DIRECTION

TIME OF DAY	FLOWS AND CAPACITY IN VEH/HR							AVERAGE SPEEDS IN MPH		
	MAIN ROUTE		SITE CAPA CITY	FLOW		AV.DEL PER VEH (MINS)	AVERAGE QUEUE (VEH)	MAIN ROUTE		SITE
	DEMAND FLOW	PCT HEAVY		MAIN ROUTE	'DIVER TED'			WITHOUT WORK ZONE	WITH WORK ZONE	
MID-1 AM	344	0.0	3000	344	0	0.36	0	70.2	63.8	49.7
1-2 AM	249	0.0	3000	249	0	0.36	0	70.2	63.8	49.7
2-3 AM	209	0.0	3000	209	0	0.36	0	70.2	63.8	49.7
3-4 AM	283	0.0	3000	283	0	0.36	0	70.2	63.8	49.7
4-5 AM	709	0.0	3000	709	0	0.36	0	69.9	63.6	49.7
5-6 AM	2215	0.0	2999	2215	0	0.45	0	68.0	60.7	45.6
6-7 AM	4932	0.0	2999	3742	1190	9.83+	590	57.1	17.8	37.3
7-8 AM	5796	0.0	3000	3000	2796	14.24+	809	51.2	13.4	37.3
8-9 AM	4715	0.0	3000	3010	1705	14.85+	808	58.6	13.4	37.3
9-10 AM	3676	0.0	3000	3004	672	15.28+	805	65.8	13.4	37.3
10-11 AM	3512	0.0	3000	3002	510	15.31+	805	66.4	13.4	37.3
11AM-NOON	3701	0.0	3000	3002	699	15.27+	805	65.6	13.4	37.3
NOON-1PM	3595	0.0	3000	3002	593	15.31+	805	66.3	13.4	37.3
1-2 PM	3500	0.0	3000	3002	498	15.31+	805	66.4	13.4	37.3
2-3 PM	3721	0.0	3000	3002	719	15.26+	805	65.5	13.4	37.3
3-4 PM	4220	0.0	3000	3012	1208	15.07+	807	62.0	13.4	37.3
4-5 PM	4618	0.0	3000	3007	1611	14.91+	808	59.3	13.4	37.3
5-6 PM	4423	0.0	3000	3007	1416	14.98+	807	60.6	13.4	37.3
6-7 PM	3231	0.0	3000	2983	248	15.12+	793	66.7	13.5	37.3
7-8 PM	2292	0.0	2999	2292	0	7.74	459	67.9	22.0	41.6
8-9 PM	1959	0.0	3000	1959	0	0.37	2	68.3	62.0	49.7
9-10 PM	1586	0.0	3000	1586	0	0.34	0	68.7	62.9	49.7
10-11 PM	1083	0.0	3000	1083	0	0.35	0	69.4	63.3	49.7
11PM-MID	723	0.0	3000	723	0	0.35	0	69.9	63.6	49.7

+ INDICATES QUEUEING EXCEEDS USER-SPECIFIED MAXIMUM LIMIT

----- SITE BREAKDOWN DELAYS -----	
BREAKDOWN DURATION (MINS)	0
RANGE OF QUEUE DELAY - MIN (VEH-H) MAX	0.0
AV BREAKDOWNS PER DAY	0.00
AV QUEUE DELAY/DAY (VEH-H)	0.0
AV TOTAL DELAY/DAY (VEH-H)	0.0

----- SITE ACCIDENT DELAYS -----	
BREAKDOWN DURATION (MINS)	0
RANGE OF QUEUE DELAY - MIN (VEH-H) MAX	0
AV BREAKDOWNS PER DAY	0
AV QUEUE DELAY/DAY (VEH-H)	0
AV TOTAL DELAY/DAY (VEH-H)	0

AVERAGE ACCIDENT NUMBERS (PIA/DAY)	
MAIN ROUTE WITHOUT WORKS	0.0436
MAIN ROUTE WITH WORKS	0.0310
'DIVERSION'	0.0215

PIA: Personal Injury Accidents

ECONOMIC IMPACT ON ROAD USERS	
ROAD USER COSTS PER DAY	\$175,215
CONGESTED HOURS PER DAY*	13

*Delays Exceeding User-Specified Maximum

**IH 94: STH 16 TO USH 18 (WAUKESHA COUNTY)
CONTINUOUS (24 HOUR) CLOSURE
NO DIVERSION ROUTE (MAX QUEUE METHOD)**

AUGUST
Analyzed for 2009
Construction Season

GRAPHICAL REPRESENTATION OF TRAFFIC MODEL INPUT AND OUTPUT
MON-THUR EASTBOUND DIRECTION

