

IH 94: STH 16 TO USH 18 (WAUKESHA COUNTY) CONTINUOUS (24 HOUR) 2 LANE CLOSURE NO DIVERSION ROUTE (MAX QUEUE METHOD)	MAY
	Analyzed for 2009 Construction Season

SUMMARY OF TRAFFIC MODEL OUTPUT

FRIDAY WESTBOUND DIRECTION

TIME OF DAY	FLOWS AND CAPACITY IN VEH/HR						AVERAGE SPEEDS IN MPH				
	MAIN ROUTE		SITE CAPA CITY	FLOW		AV.DEL PER VEH (MINS)	AVERAGE QUEUE (VEH)	MAIN ROUTE		SITE	
	DEMAND FLOW	PCT HEAVY		MAIN ROUTE	'DIVER TED'			WITHOUT WORK ZONE	WITH WORK ZONE		
MID-1 AM	588	0.0	1500	588	0	1.06	24	70.0	54.0	43.0	
1-2 AM	353	0.0	1500	353	0	0.52	0	70.2	61.4	44.1	
2-3 AM	282	0.0	1500	282	0	0.51	0	70.2	61.5	44.3	
3-4 AM	317	0.0	1500	317	0	0.51	0	70.2	61.4	44.2	
4-5 AM	477	0.0	1500	477	0	0.53	0	70.1	61.1	43.6	
5-6 AM	1258	0.0	1499	1258	0	1.06	7	69.2	53.5	36.3	
6-7 AM	2907	0.0	1500	1933	974	13.39+	341	67.1	14.7	33.6	
7-8 AM	4058	0.0	1499	1500	2558	16.04+	399	63.2	12.5	30.8	
8-9 AM	3907	0.0	1500	1500	2407	16.11+	400	64.1	12.5	30.8	
9-10 AM	3317	0.0	1500	1500	1817	16.25+	400	66.6	12.5	30.8	
10-11 AM	3297	0.0	1500	1500	1797	16.25+	400	66.6	12.5	30.8	
11AM-NOON	3801	0.0	1500	1500	2301	16.15+	400	64.9	12.5	30.8	
NOON-1PM	4224	0.0	1500	1500	2724	15.97+	400	62.0	12.5	30.8	
1-2 PM	4391	0.0	1500	1500	2891	15.90+	400	60.9	12.5	30.8	
2-3 PM	4972	0.0	1500	1500	3472	15.61+	400	56.9	12.5	30.8	
3-4 PM	5700	0.0	1500	1500	4200	15.18+	400	51.9	12.5	30.8	
4-5 PM	6089	0.0	1500	1500	4589	14.92+	400	49.2	12.5	30.8	
5-6 PM	5997	0.0	1500	1500	4497	14.98+	400	49.9	12.5	30.8	
6-7 PM	4503	0.0	1500	1500	3003	15.84+	400	60.1	12.5	30.8	
7-8 PM	3003	0.0	1500	1500	1503	16.27+	400	67.0	12.5	30.8	
8-9 PM	2417	0.0	1500	1500	917	16.32+	400	67.8	12.5	30.8	
9-10 PM	2394	0.0	1500	1500	894	16.32+	400	67.8	12.5	30.8	
10-11 PM	2242	0.0	1500	1489	753	16.29+	398	67.9	12.6	30.8	
11PM-MID	1375	0.0	1499	1244	131	13.40+	331	69.0	14.8	31.1	

+ INDICATES QUEUEING EXCEEDS USER-SPECIFIED MAXIMUM LIMIT

----- SITE BREAKDOWN DELAYS -----	
BREAKDOWN DURATION (MINS)	0
RANGE OF QUEUE DELAY - MIN (VEH-H) MAX	0.0
AV BREAKDOWNS PER DAY	0.00
AV QUEUE DELAY/DAY (VEH-H)	0.0
AV TOTAL DELAY/DAY (VEH-H)	0.0

----- SITE ACCIDENT DELAYS -----	
BREAKDOWN DURATION (MINS)	0
RANGE OF QUEUE DELAY - MIN (VEH-H) MAX	0
AV BREAKDOWNS PER DAY	0
AV QUEUE DELAY/DAY (VEH-H)	0
AV TOTAL DELAY/DAY (VEH-H)	0

AVERAGE ACCIDENT NUMBERS (PIA/DAY)	
MAIN ROUTE WITHOUT WORKS	0.0480
MAIN ROUTE WITH WORKS	0.0183
'DIVERSION'	0.0641
PIA: Personal Injury Accidents	
IMPACTS ON ROAD USERS	
ROAD USER COSTS PER DAY	\$240,071
CONGESTED HOURS PER DAY*	18

*Delays Exceeding User-Specified Maximum

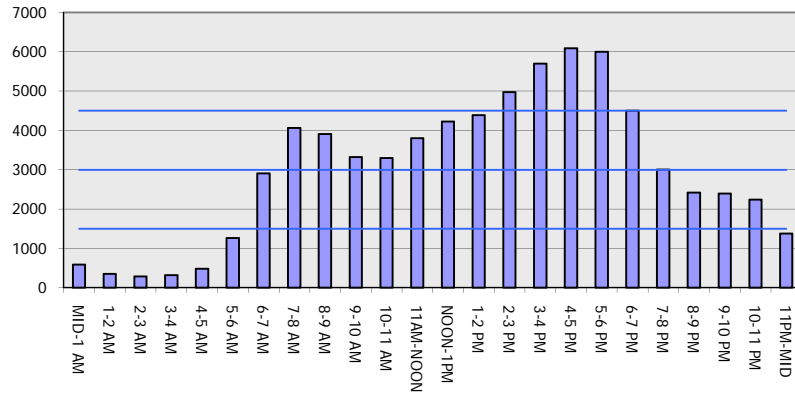
**IH 94: STH 16 TO USH 18 (WAUKESHA COUNTY)
CONTINUOUS (24 HOUR) 2 LANE CLOSURE
NO DIVERSION ROUTE (MAX QUEUE METHOD)**

MAY
Analyzed for 2009
Construction Season

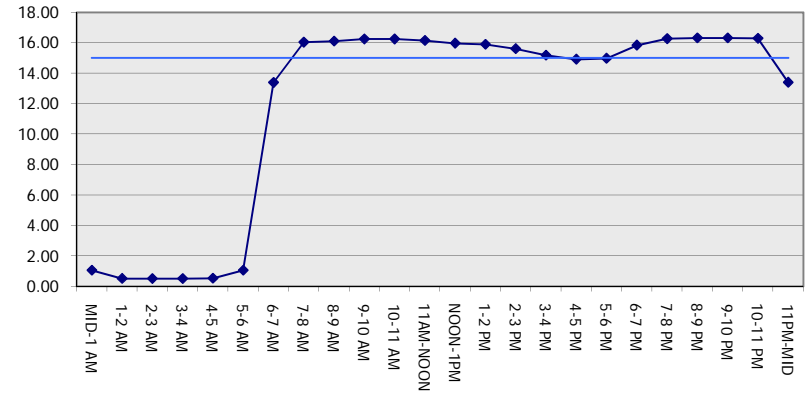
GRAPHICAL REPRESENTATION OF TRAFFIC MODEL INPUT AND OUTPUT

FRIDAY WESTBOUND DIRECTION

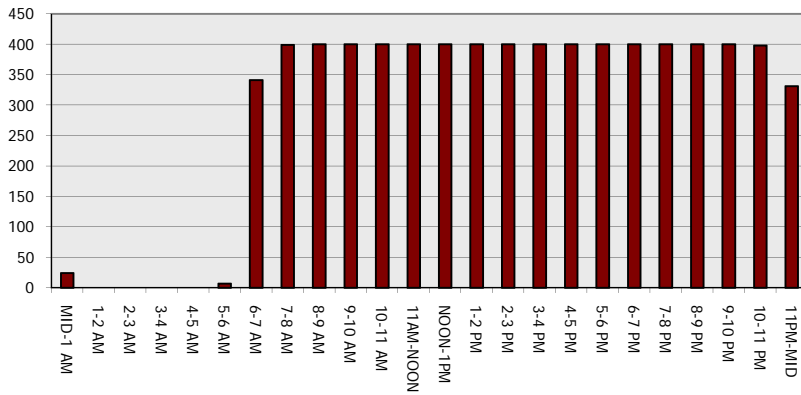
Main Route - Traffic Demand (Vehicles Per Hour)



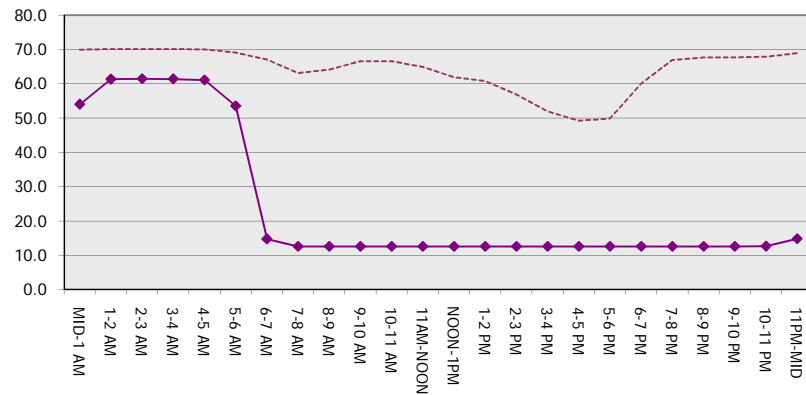
Main Route Average Delay Per Vehicle (Minutes)



Main Route - Average Queue Length (Vehicles)



Main Route - Average Speed (MPH)



IH 94: STH 16 TO USH 18 (WAUKESHA COUNTY) CONTINUOUS (24 HOUR) 2 LANE CLOSURE NO DIVERSION ROUTE (MAX QUEUE METHOD)	MAY
	Analyzed for 2009 Construction Season

SUMMARY OF TRAFFIC MODEL OUTPUT

FRIDAY EASTBOUND DIRECTION

TIME OF DAY	FLOWS AND CAPACITY IN VEH/HR							AVERAGE SPEEDS IN MPH			
	MAIN ROUTE		SITE CAPA CITY	FLOW		AV.DEL PER VEH (MINS)	AVERAGE QUEUE (VEH)	MAIN ROUTE		SITE	
	DEMAND FLOW	PCT HEAVY		MAIN ROUTE	'DIVER TED'			WITHOUT WORK ZONE	WITH WORK ZONE		
MID-1 AM	362	0.0	1500	362	0	0.52	0	70.2	61.4	44.0	
1-2 AM	267	0.0	1500	267	0	0.50	0	70.2	61.5	44.4	
2-3 AM	239	0.0	1500	239	0	0.50	0	70.2	61.5	44.5	
3-4 AM	258	0.0	1500	258	0	0.50	0	70.2	61.5	44.5	
4-5 AM	636	0.0	1500	636	0	0.55	0	69.9	60.7	43.0	
5-6 AM	2008	0.0	1499	2008	0	3.47	127	68.2	35.2	30.8	
6-7 AM	4704	0.0	1500	1500	3204	15.62+	400	58.7	12.7	32.8	
7-8 AM	5644	0.0	1500	1500	4144	15.10+	399	52.3	12.7	32.8	
8-9 AM	4607	0.0	1500	1500	3107	15.67+	400	59.4	12.7	32.8	
9-10 AM	3566	0.0	1500	1500	2066	16.12+	400	66.3	12.7	32.8	
10-11 AM	3282	0.0	1500	1500	1782	16.14+	400	66.6	12.7	32.8	
11AM-NOON	3598	0.0	1500	1500	2098	16.11+	400	66.3	12.7	32.8	
NOON-1PM	3569	0.0	1500	1500	2069	16.11+	400	66.3	12.7	32.8	
1-2 PM	3541	0.0	1500	1500	2041	16.12+	400	66.3	12.7	32.8	
2-3 PM	4039	0.0	1500	1500	2539	15.93+	400	63.3	12.7	32.8	
3-4 PM	4689	0.0	1500	1500	3189	15.63+	400	58.8	12.7	32.8	
4-5 PM	4636	0.0	1500	1500	3136	15.66+	400	59.2	12.7	32.8	
5-6 PM	4693	0.0	1500	1500	3193	15.63+	400	58.8	12.7	32.8	
6-7 PM	3698	0.0	1500	1500	2198	16.07+	400	65.6	12.7	32.8	
7-8 PM	2635	0.0	1499	1438	1197	15.98+	394	67.4	12.8	32.7	
8-9 PM	2121	0.0	1499	1500	621	16.34+	399	68.1	12.5	30.8	
9-10 PM	1884	0.0	1500	1468	416	16.22+	396	68.4	12.7	30.8	
10-11 PM	1424	0.0	1499	1390	33	15.21+	371	69.0	13.4	30.8	
11PM-MID	1105	0.0	1499	1105	0	4.52	147	69.4	30.9	36.1	

+ INDICATES QUEUEING EXCEEDS USER-SPECIFIED MAXIMUM LIMIT

BREAKDOWN DURATION (MINS)	0
RANGE OF QUEUE DELAY - MIN (VEH-H) MAX	0.0
AV BREAKDOWNS PER DAY	0.00
AV QUEUE DELAY/DAY (VEH-H)	0.0
AV TOTAL DELAY/DAY (VEH-H)	0.0

BREAKDOWN DURATION (MINS)	0
RANGE OF QUEUE DELAY - MIN (VEH-H) MAX	0
AV BREAKDOWNS PER DAY	0
AV QUEUE DELAY/DAY (VEH-H)	0
AV TOTAL DELAY/DAY (VEH-H)	0

MAIN ROUTE WITHOUT WORKS	0.0449
MAIN ROUTE WITH WORKS	0.0182
'DIVERSION'	0.0573

PIA: Personal Injury Accidents

ROAD USER COSTS PER DAY	\$223,198
CONGESTED HOURS PER DAY*	17

*Delays Exceeding User-Specified Maximum

**IH 94: STH 16 TO USH 18 (WAUKESHA COUNTY)
CONTINUOUS (24 HOUR) 2 LANE CLOSURE
NO DIVERSION ROUTE (MAX QUEUE METHOD)**

MAY
Analyzed for 2009
Construction Season

GRAPHICAL REPRESENTATION OF TRAFFIC MODEL INPUT AND OUTPUT
FRIDAY EASTBOUND DIRECTION

