

IH 94: STH 16 TO USH 18 (WAUKESHA COUNTY) CONTINUOUS (24 HOUR) CLOSURE NO DIVERSION ROUTE (MAX QUEUE METHOD)	MAY
	Analyzed for 2009 Construction Season

SUMMARY OF TRAFFIC MODEL OUTPUT

FRIDAY WESTBOUND DIRECTION

TIME OF DAY	FLOWS AND CAPACITY IN VEH/HR						AVERAGE SPEEDS IN MPH			
	MAIN ROUTE		SITE CAPA CITY	FLOW		AV.DEL PER VEH (MINS)	AVERAGE QUEUE (VEH)	MAIN ROUTE		SITE
	DEMAND FLOW	PCT HEAVY		MAIN ROUTE	'DIVER TED'			WITHOUT WORK ZONE	WITH WORK ZONE	
MID-1 AM	588	0.0	3000	588	0	0.36	0	70.0	63.7	49.7
1-2 AM	353	0.0	3000	353	0	0.36	0	70.2	63.8	49.7
2-3 AM	282	0.0	3000	282	0	0.36	0	70.2	63.8	49.7
3-4 AM	317	0.0	3000	317	0	0.36	0	70.2	63.8	49.7
4-5 AM	477	0.0	3000	477	0	0.36	0	70.1	63.8	49.7
5-6 AM	1258	0.0	3000	1258	0	0.35	0	69.2	63.2	49.7
6-7 AM	2907	0.0	2999	2907	0	1.05	32	67.1	52.5	41.4
7-8 AM	4058	0.0	3000	3657	401	9.72+	565	63.2	18.4	37.3
8-9 AM	3907	0.0	2999	3001	905	15.18+	805	64.1	13.4	37.3
9-10 AM	3317	0.0	3000	3001	316	15.32+	805	66.6	13.4	37.3
10-11 AM	3297	0.0	3000	3001	297	15.32+	805	66.6	13.4	37.3
11AM-NOON	3801	0.0	3000	3001	800	15.23+	805	64.9	13.4	37.3
NOON-1PM	4224	0.0	3000	3006	1218	15.06+	806	62.0	13.4	37.3
1-2 PM	4391	0.0	3000	3005	1387	15.00+	807	60.9	13.4	37.3
2-3 PM	4972	0.0	2999	3000	1972	14.74+	809	56.9	13.4	37.3
3-4 PM	5700	0.0	3000	3000	2700	14.30+	809	51.9	13.4	37.3
4-5 PM	6089	0.0	3000	3000	3089	14.04+	809	49.2	13.4	37.3
5-6 PM	5997	0.0	3000	3000	2997	14.10+	809	49.9	13.4	37.3
6-7 PM	4503	0.0	3000	3001	1502	14.95+	807	60.1	13.4	37.3
7-8 PM	3003	0.0	3000	2871	132	14.69+	770	67.0	13.8	37.3
8-9 PM	2417	0.0	2999	2417	0	7.07	399	67.8	23.3	39.9
9-10 PM	2394	0.0	3000	2394	0	0.45	6	67.8	60.5	49.0
10-11 PM	2242	0.0	3000	2242	0	0.33	0	67.9	62.4	49.7
11PM-MID	1375	0.0	3000	1375	0	0.34	0	69.0	63.1	49.7

+ INDICATES QUEUEING EXCEEDS USER-SPECIFIED MAXIMUM LIMIT

----- SITE BREAKDOWN DELAYS -----	
BREAKDOWN DURATION (MINS)	0
RANGE OF QUEUE DELAY - MIN (VEH-H) MAX	0.0
AV BREAKDOWNS PER DAY	0.00
AV QUEUE DELAY/DAY (VEH-H)	0.0
AV TOTAL DELAY/DAY (VEH-H)	0.0

----- SITE ACCIDENT DELAYS -----	
BREAKDOWN DURATION (MINS)	0
RANGE OF QUEUE DELAY - MIN (VEH-H) MAX	0
AV BREAKDOWNS PER DAY	0
AV QUEUE DELAY/DAY (VEH-H)	0
AV TOTAL DELAY/DAY (VEH-H)	0

AVERAGE ACCIDENT NUMBERS (PIA/DAY)	
MAIN ROUTE WITHOUT WORKS	0.0480
MAIN ROUTE WITH WORKS	0.0326
'DIVERSION'	0.0274
PIA: Personal Injury Accidents	
IMPACTS ON ROAD USERS	
ROAD USER COSTS PER DAY	\$190,679
CONGESTED HOURS PER DAY*	13

*Delays Exceeding User-Specified Maximum

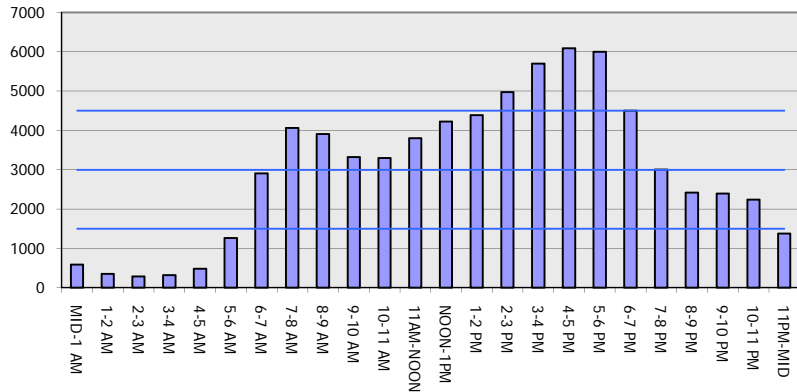
**IH 94: STH 16 TO USH 18 (WAUKESHA COUNTY)
CONTINUOUS (24 HOUR) CLOSURE
NO DIVERSION ROUTE (MAX QUEUE METHOD)**

MAY
Analyzed for 2009
Construction Season

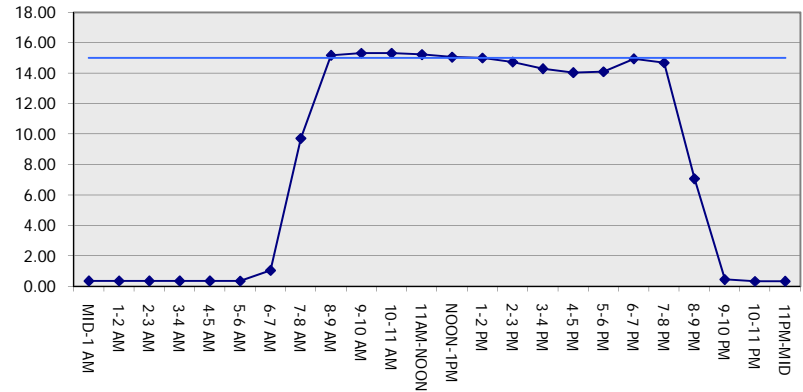
GRAPHICAL REPRESENTATION OF TRAFFIC MODEL INPUT AND OUTPUT

FRIDAY WESTBOUND DIRECTION

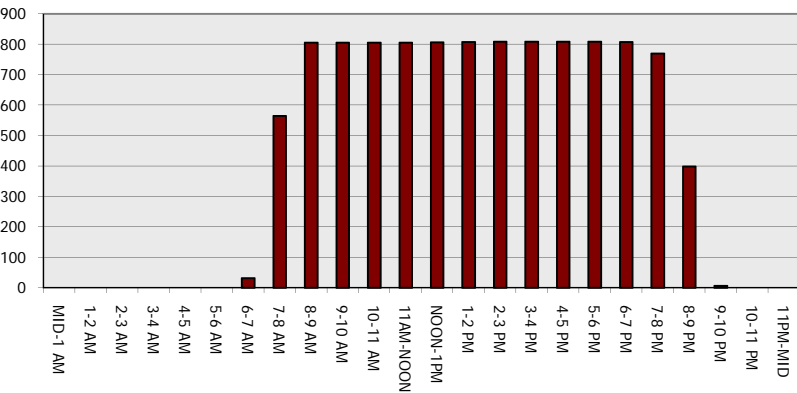
Main Route - Traffic Demand (Vehicles Per Hour)



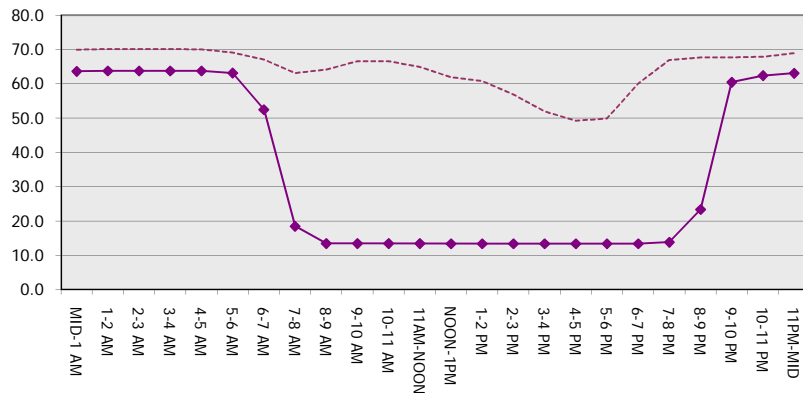
Main Route Average Delay Per Vehicle (Minutes)



Main Route - Average Queue Length (Vehicles)



Main Route - Average Speed (MPH)



IH 94: STH 16 TO USH 18 (WAUKESHA COUNTY) CONTINUOUS (24 HOUR) CLOSURE NO DIVERSION ROUTE (MAX QUEUE METHOD)	MAY
	Analyzed for 2009 Construction Season

SUMMARY OF TRAFFIC MODEL OUTPUT

FRIDAY EASTBOUND DIRECTION

TIME OF DAY	FLOWS AND CAPACITY IN VEH/HR						AVERAGE SPEEDS IN MPH			
	MAIN ROUTE		SITE CAPA CITY	FLOW		AV.DEL PER VEH (MINS)	AVERAGE QUEUE (VEH)	MAIN ROUTE		SITE
	DEMAND FLOW	PCT HEAVY		MAIN ROUTE	'DIVER TED'			WITHOUT WORK ZONE	WITH WORK ZONE	
MID-1 AM	362	0.0	3000	362	0	0.36	0	70.2	63.8	49.7
1-2 AM	267	0.0	3000	267	0	0.36	0	70.2	63.8	49.7
2-3 AM	239	0.0	3000	239	0	0.36	0	70.2	63.8	49.7
3-4 AM	258	0.0	3000	258	0	0.36	0	70.2	63.8	49.7
4-5 AM	636	0.0	3000	636	0	0.36	0	69.9	63.7	49.7
5-6 AM	2008	0.0	2999	2008	0	0.38	0	68.2	61.9	48.1
6-7 AM	4704	0.0	2999	3633	1071	9.04+	560	58.7	19.0	38.3
7-8 AM	5644	0.0	3000	3015	2630	14.24+	808	52.3	13.4	38.9
8-9 AM	4607	0.0	3000	3021	1585	14.85+	807	59.4	13.4	38.0
9-10 AM	3566	0.0	3000	3112	454	15.08+	793	66.3	13.5	37.3
10-11 AM	3282	0.0	3000	3001	281	15.32+	805	66.6	13.4	37.3
11AM-NOON	3598	0.0	3000	3001	597	15.31+	805	66.3	13.4	37.3
NOON-1PM	3569	0.0	3000	3001	568	15.31+	805	66.3	13.4	37.3
1-2 PM	3541	0.0	3000	3001	540	15.31+	805	66.3	13.4	37.3
2-3 PM	4039	0.0	3000	3004	1036	15.13+	806	63.3	13.4	37.3
3-4 PM	4689	0.0	3000	3003	1686	14.88+	809	58.8	13.4	37.3
4-5 PM	4636	0.0	3000	3004	1633	14.90+	809	59.2	13.4	37.3
5-6 PM	4693	0.0	3000	3002	1691	14.88+	809	58.8	13.4	37.3
6-7 PM	3698	0.0	3000	3000	697	15.27+	805	65.6	13.4	37.3
7-8 PM	2635	0.0	2999	2635	0	12.56+	663	67.4	15.5	37.3
8-9 PM	2121	0.0	2999	2121	0	1.72	118	68.1	46.5	47.5
9-10 PM	1884	0.0	3000	1884	0	0.34	0	68.4	62.7	49.7
10-11 PM	1424	0.0	3000	1424	0	0.34	0	69.0	63.0	49.7
11PM-MID	1105	0.0	3000	1105	0	0.35	0	69.4	63.3	49.7

+ INDICATES QUEUEING EXCEEDS USER-SPECIFIED MAXIMUM LIMIT

----- SITE BREAKDOWN DELAYS -----	
BREAKDOWN DURATION (MINS)	0
RANGE OF QUEUE DELAY - MIN (VEH-H) MAX	0.0
AV BREAKDOWNS PER DAY	0.00
AV QUEUE DELAY/DAY (VEH-H)	0.0
AV TOTAL DELAY/DAY (VEH-H)	0.0

----- SITE ACCIDENT DELAYS -----	
BREAKDOWN DURATION (MINS)	0
RANGE OF QUEUE DELAY - MIN (VEH-H) MAX	0
AV BREAKDOWNS PER DAY	0
AV QUEUE DELAY/DAY (VEH-H)	0
AV TOTAL DELAY/DAY (VEH-H)	0

AVERAGE ACCIDENT NUMBERS (PIA/DAY)	
MAIN ROUTE WITHOUT WORKS	0.0449
MAIN ROUTE WITH WORKS	0.0318
'DIVERSION'	0.0224

PIA: Personal Injury Accidents

ECONOMIC IMPACT ON ROAD USERS	
ROAD USER COSTS PER DAY	\$185,706
CONGESTED HOURS PER DAY*	14

*Delays Exceeding User-Specified Maximum

**IH 94: STH 16 TO USH 18 (WAUKESHA COUNTY)
CONTINUOUS (24 HOUR) CLOSURE
NO DIVERSION ROUTE (MAX QUEUE METHOD)**

MAY
Analyzed for 2009
Construction Season

GRAPHICAL REPRESENTATION OF TRAFFIC MODEL INPUT AND OUTPUT
FRIDAY EASTBOUND DIRECTION

